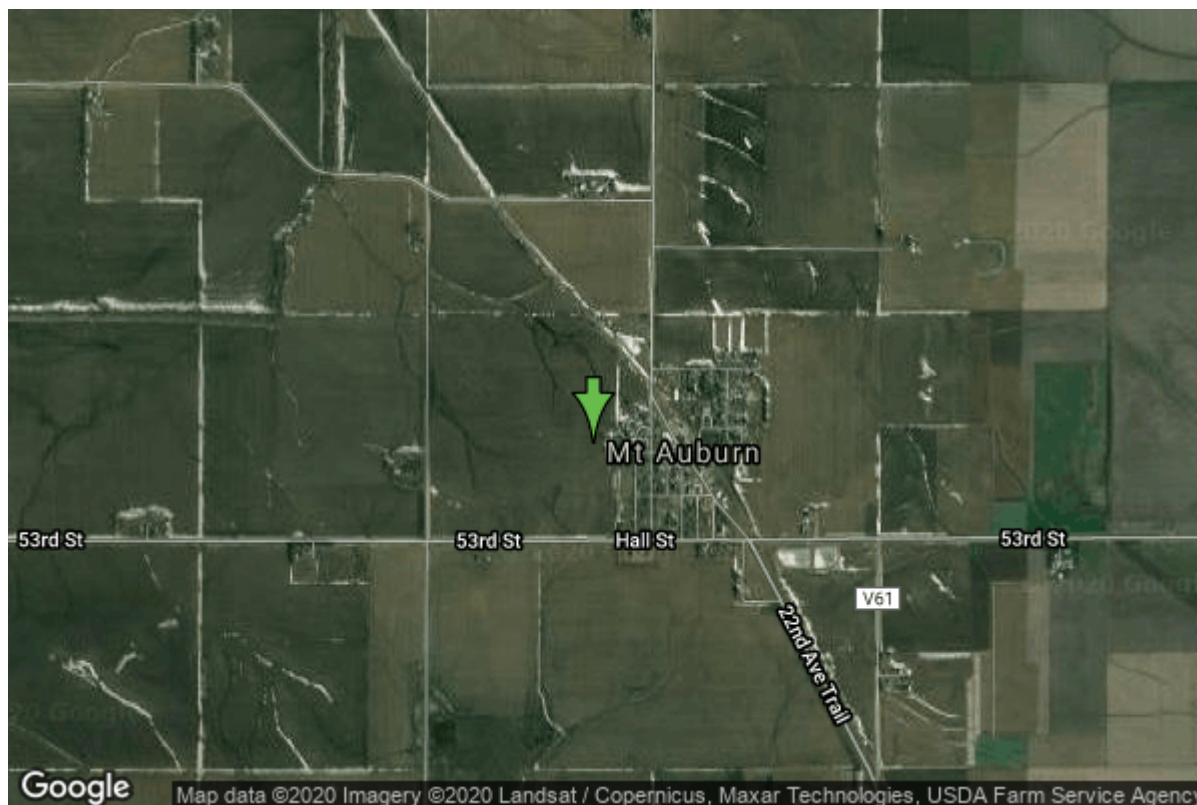


# Well W#26010 Information



<b>Date Received</b>		<b>State</b>	Iowa
<b>Owner Name</b>	Mount Auburn, City Of	<b>County</b>	Benton
<b>Alt Name</b>	#2	<b>Quadrangle</b>	Brandon, Iowa
<b>WNumber</b>	26010	<b>Township</b>	T86N
<b>PWTS ID</b>	0	<b>Range</b>	R11W
<b>PWS ID</b>	650001	<b>Section</b>	14
<b>Storet ID</b>	0	<b>Quarter</b>	SW SE NE
<b>SDWIS ID</b>	2412698	<b>Latitude</b>	42.2568930000
<b>USGS ID</b>	0	<b>Longitude</b>	-92.0960310000
<b>Project</b>	Source Water Protection	<b>Accuracy</b>	
<b>Operator</b>	Unknown	<b>UTM X</b>	574563
		<b>UTM Y</b>	4678695

<b>Site Type</b>	Drilled hole	<b>Drilling Company</b>	Layne Western - Ia.
<b>Well Status</b>	Standby	<b>Drilling Date</b>	01/01/1980
<b>Field Located</b>	No	<b>Drilling Method</b>	Unknown
<b>Elevation</b>	889 ft	<b>Bedrock Depth</b>	0 ft
<b>Elevation Accuracy</b>	Digital Elevation Model Accurate to 5 ft	<b>Well Depth</b>	461 ft
<b>Landscape Position</b>	Unknown	<b>Total Depth</b>	461 ft
		<b>Well Types</b>	Municipal, Public Supply
		<b>Aquifers</b>	Silurian

## Casing Construction Information

<b>Date</b>	09/16/1980	<b>Casing Type</b>	Steel
<b>Start Depth</b>	0.00 ft	<b>End Depth</b>	276.60 ft

<b>Diameter</b>	8.00 in	<b>Amount</b>	276.60 ft
<b>Comments</b>			

## Grout Construction Information

<b>Date</b>	09/16/1980		
<b>Grout Type</b>	Cement	<b>Grout Placement</b>	Unknown
<b>Start Depth</b>	0.00 ft	<b>End Depth</b>	276.00 ft
<b>Comments</b>			

## Log Information

<b>Date</b>	12/16/1980
<b>Log Types</b>	Strip log
<b>Prepared By</b>	Unknown
<b>Comments</b>	

---

<b>Date</b>	
<b>Log Types</b>	Drillers log
<b>Prepared By</b>	Mount Auburn, City Of
<b>Comments</b>	

## Water Production Information

<b>Date</b>	09/16/1980	<b>Start Time</b>	
<b>Aquifer</b>	Unknown		
<b>Static Water Level</b>	85.00 ft	<b>Yield</b>	200 gallons per minute
<b>Pumping Water Level</b>	124 ft	<b>Yield Method</b>	Unknown
<b>Measurement</b>	Unknown	<b>Pump Test</b>	Yes
<b>Pump Method</b>	Unknown	<b>Duration</b>	0 mins
<b>Comments</b>			

## Chip Storage Information

<b>Date</b>	10/10/1980		
<b>Storage</b>	OD1-272,273	<b>Bin</b>	
<b>Number of Boxes</b>	2	<b>Number of Samples</b>	93
<b>Sample Intervals</b>	5	<b>Sample Gaps</b>	140-45,255-57,390-95
<b>Sample Top</b>	0 ft	<b>Sample Bottom</b>	461 ft
<b>Washed Top</b>	250 ft	<b>Washed Bottom</b>	461 ft
<b>Duplicate Storage</b>			
<b>Comments</b>			