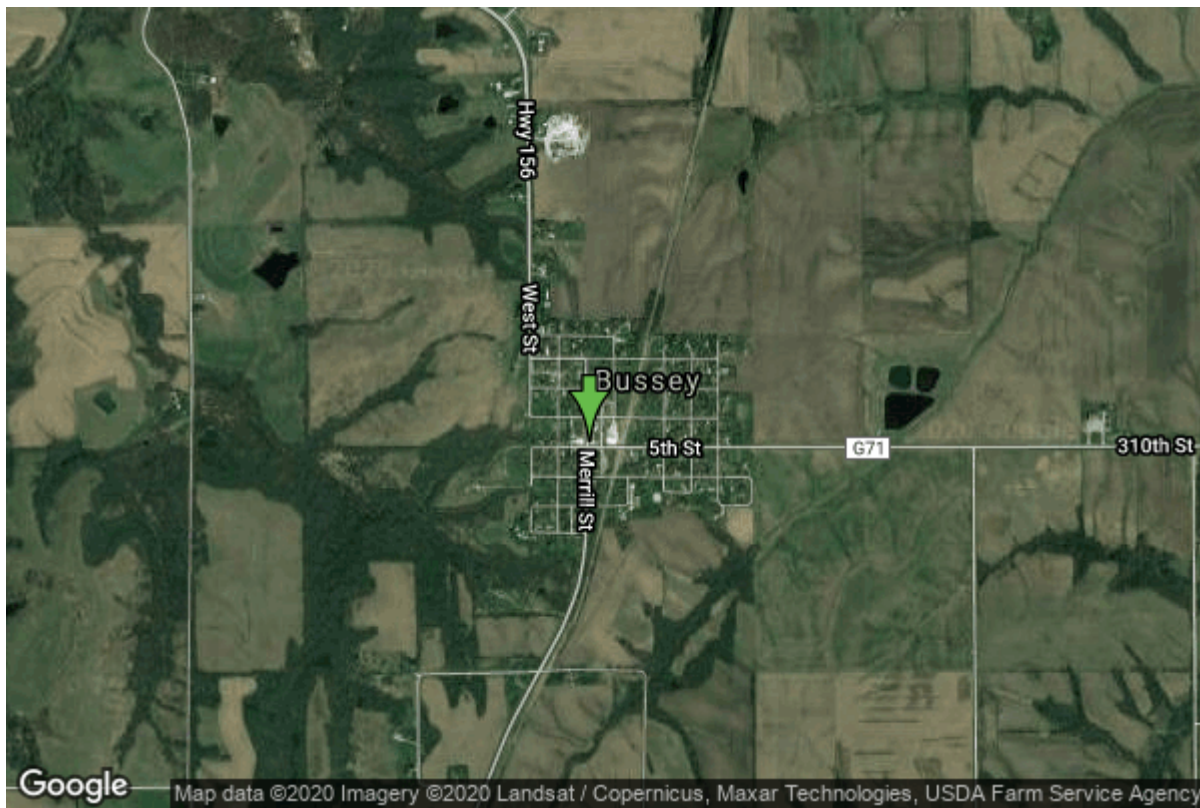


# Well W#26319 Information



<b>Date Received</b>		<b>State</b>	Iowa
<b>Owner Name</b>	Bussey, City Of	<b>County</b>	Marion
<b>Alt Name</b>	#4	<b>Quadrangle</b>	Lovilia, Iowa
<b>WNumber</b>	26319	<b>Township</b>	T74N
<b>PWTS ID</b>	0	<b>Range</b>	R18W
<b>PWS ID</b>	6309061	<b>Section</b>	13
<b>Storet ID</b>	0	<b>Quarter</b>	SW SW SE
<b>SDWIS ID</b>	2412304	<b>Latitude</b>	41.2046740000
<b>USGS ID</b>	0	<b>Longitude</b>	-92.8858270000
<b>Project</b>	Source Water Protection	<b>Accuracy</b>	
<b>Operator</b>	Unknown	<b>UTM X</b>	509572
		<b>UTM Y</b>	4561485

<b>Site Type</b>	Drilled hole	<b>Drilling Company</b>	Layne Western - Ia.
<b>Well Status</b>	Not Used	<b>Drilling Date</b>	07/07/1981
<b>Field Located</b>	No	<b>Drilling Method</b>	Rotary
<b>Elevation</b>	872 ft	<b>Bedrock Depth</b>	40 ft
<b>Elevation Accuracy</b>	Digital Elevation Model	<b>Well Depth</b>	2157 ft
	Accurate to 5 ft	<b>Total Depth</b>	2155 ft
<b>Landscape Position</b>	Upland	<b>Well Types</b>	Municipal, Public Supply
		<b>Aquifers</b>	Cambrian-Ordovician

## Log Information

<b>Date</b>	08/01/1984
<b>Log Types</b>	Strip log

**Prepared By** Bounk, Michael Joseph  
**Comments**

---

**Date**  
**Log Types** Drillers log  
**Prepared By** Unknown  
**Comments**

## Stratigraphy Information

**System** Quaternary  
**Series** Pleistocene Series  
**Group**  
**Formation**  
**Member**  
**Submember**  
**Start Depth** 0.00 ft **End Depth** 40.00 ft  
**Contact Accuracy**  
**Penetration**  
**Primary Lithology** Till **Percent** 0  
**Secondary Lithology** Sand **Percent** 0  
**Tertiary Lithology** **Percent**  
**Comments**

---

**System** Pennsylvanian (Subsystem Of Carboniferous System)  
**Series**  
**Group**  
**Formation**  
**Member**  
**Submember**  
**Start Depth** 40.00 ft **End Depth** 230.00 ft  
**Contact Accuracy**  
**Penetration**  
**Primary Lithology** Shale **Percent** 100  
**Secondary Lithology** **Percent**  
**Tertiary Lithology** **Percent**  
**Comments**

---

**System** Mississippian (Subsystem Of Carboniferous System)  
**Series**  
**Group**  
**Formation** St. Louis  
**Member**  
**Submember**  
**Start Depth** 230.00 ft **End Depth** 330.00 ft  
**Contact Accuracy**  
**Penetration**  
**Primary Lithology** Limestone **Percent** 0

<b>Secondary Lithology</b>	Dolomite	<b>Percent</b>	0
<b>Tertiary Lithology</b>	Sandstone	<b>Percent</b>	0
<b>Comments</b>			

---

<b>System</b>	Mississippian (Subsystem Of Carboniferous System)		
<b>Series</b>			
<b>Group</b>	Augusta		
<b>Formation</b>	Warsaw		
<b>Member</b>			
<b>Submember</b>			
<b>Start Depth</b>	330.00 ft	<b>End Depth</b>	380.00 ft
<b>Contact Accuracy</b>			
<b>Penetration</b>			
<b>Primary Lithology</b>	Dolomite	<b>Percent</b>	0
<b>Secondary Lithology</b>	Gypsum/Anhydrite	<b>Percent</b>	0
<b>Tertiary Lithology</b>	Shale	<b>Percent</b>	0
<b>Comments</b>			

---

<b>System</b>	Mississippian (Subsystem Of Carboniferous System)		
<b>Series</b>			
<b>Group</b>	Augusta		
<b>Formation</b>	Keokuk		
<b>Member</b>			
<b>Submember</b>			
<b>Start Depth</b>	380.00 ft	<b>End Depth</b>	400.00 ft
<b>Contact Accuracy</b>			
<b>Penetration</b>			
<b>Primary Lithology</b>	Dolomite	<b>Percent</b>	0
<b>Secondary Lithology</b>	Chert/Chalcedony	<b>Percent</b>	0
<b>Tertiary Lithology</b>		<b>Percent</b>	
<b>Comments</b>			

---

<b>System</b>	Mississippian (Subsystem Of Carboniferous System)		
<b>Series</b>			
<b>Group</b>	Augusta		
<b>Formation</b>	Burlington		
<b>Member</b>			
<b>Submember</b>			
<b>Start Depth</b>	400.00 ft	<b>End Depth</b>	462.00 ft
<b>Contact Accuracy</b>			
<b>Penetration</b>			
<b>Primary Lithology</b>	Limestone	<b>Percent</b>	0
<b>Secondary Lithology</b>	Chert/Chalcedony	<b>Percent</b>	0
<b>Tertiary Lithology</b>		<b>Percent</b>	
<b>Comments</b>			

---

<b>System</b>	Unknown		
<b>Series</b>			
<b>Group</b>			

**Formation Member**  
**Submember**  
**Start Depth** 462.00 ft **End Depth** 550.00 ft  
**Contact Accuracy Penetration**  
**Primary Lithology** Limestone **Percent** 0  
**Secondary Lithology** Dolomite **Percent** 0  
**Tertiary Lithology** Chert/Chalcedony **Percent** 0  
**Comments**

---

**System** Mississippian (Subsystem Of Carboniferous System)  
**Series**  
**Group** Sub-Augusta  
**Formation** Maynes Creek  
**Member**  
**Submember**  
**Start Depth** 550.00 ft **End Depth** 600.00 ft  
**Contact Accuracy Penetration**  
**Primary Lithology** Dolomite **Percent** 0  
**Secondary Lithology** Chert/Chalcedony **Percent** 0  
**Tertiary Lithology** **Percent**  
**Comments**

---

**System** Mississippian (Subsystem Of Carboniferous System)  
**Series**  
**Group** North Hill  
**Formation**  
**Member**  
**Submember**  
**Start Depth** 600.00 ft **End Depth** 635.00 ft  
**Contact Accuracy Penetration**  
**Primary Lithology** Limestone **Percent** 100  
**Secondary Lithology** **Percent**  
**Tertiary Lithology** **Percent**  
**Comments**

---

**System** Devonian  
**Series**  
**Group** Yellow Spring (New Albany)  
**Formation**  
**Member**  
**Submember**  
**Start Depth** 635.00 ft **End Depth** 715.00 ft  
**Contact Accuracy Penetration**  
**Primary Lithology** Shale **Percent** 0

<b>Secondary Lithology</b>	Limestone	<b>Percent</b>	0
<b>Tertiary Lithology</b>		<b>Percent</b>	
<b>Comments</b>			

---

<b>System</b>	Devonian		
<b>Series</b>			
<b>Group</b>	Yellow Spring (New Albany)		
<b>Formation</b>	Lime Creek		
<b>Member</b>			
<b>Submember</b>			
<b>Start Depth</b>	715.00 ft	<b>End Depth</b>	800.00 ft
<b>Contact Accuracy</b>			
<b>Penetration</b>			
<b>Primary Lithology</b>	Dolomite	<b>Percent</b>	0
<b>Secondary Lithology</b>	Siltstone	<b>Percent</b>	0
<b>Tertiary Lithology</b>	Shale	<b>Percent</b>	0
<b>Comments</b>			

---

<b>System</b>	Unknown		
<b>Series</b>			
<b>Group</b>			
<b>Formation</b>			
<b>Member</b>			
<b>Submember</b>			
<b>Start Depth</b>	800.00 ft	<b>End Depth</b>	1090.00 ft
<b>Contact Accuracy</b>			
<b>Penetration</b>			
<b>Primary Lithology</b>	Dolomite	<b>Percent</b>	0
<b>Secondary Lithology</b>	Limestone	<b>Percent</b>	0
<b>Tertiary Lithology</b>	Shale	<b>Percent</b>	0
<b>Comments</b>			

---

<b>System</b>	Devonian		
<b>Series</b>			
<b>Group</b>	Wapsipinicon		
<b>Formation</b>			
<b>Member</b>			
<b>Submember</b>			
<b>Start Depth</b>	1090.00 ft	<b>End Depth</b>	1145.00 ft
<b>Contact Accuracy</b>			
<b>Penetration</b>			
<b>Primary Lithology</b>	Gypsum/Anhydrite	<b>Percent</b>	0
<b>Secondary Lithology</b>	Limestone	<b>Percent</b>	0
<b>Tertiary Lithology</b>	Dolomite	<b>Percent</b>	0
<b>Comments</b>			

---

<b>System</b>	Silurian		
<b>Series</b>			
<b>Group</b>			

<b>Formation</b>			
<b>Member</b>			
<b>Submember</b>			
<b>Start Depth</b>	1145.00 ft	<b>End Depth</b>	1170.00 ft
<b>Contact Accuracy</b>			
<b>Penetration</b>			
<b>Primary Lithology</b>	Dolomite	<b>Percent</b>	0
<b>Secondary Lithology</b>	Limestone	<b>Percent</b>	0
<b>Tertiary Lithology</b>		<b>Percent</b>	
<b>Comments</b>			

---

<b>System</b>	Ordovician		
<b>Series</b>			
<b>Group</b>			
<b>Formation</b>	Maquoketa		
<b>Member</b>			
<b>Submember</b>			
<b>Start Depth</b>	1170.00 ft	<b>End Depth</b>	1175.00 ft
<b>Contact Accuracy</b>			
<b>Penetration</b>			
<b>Primary Lithology</b>	Shale	<b>Percent</b>	0
<b>Secondary Lithology</b>	Dolomite	<b>Percent</b>	0
<b>Tertiary Lithology</b>		<b>Percent</b>	
<b>Comments</b>			

---

<b>System</b>	Ordovician		
<b>Series</b>			
<b>Group</b>			
<b>Formation</b>	Maquoketa		
<b>Member</b>	Brainard Shale		
<b>Submember</b>			
<b>Start Depth</b>	1175.00 ft	<b>End Depth</b>	1225.00 ft
<b>Contact Accuracy</b>			
<b>Penetration</b>			
<b>Primary Lithology</b>	Shale	<b>Percent</b>	100
<b>Secondary Lithology</b>		<b>Percent</b>	
<b>Tertiary Lithology</b>		<b>Percent</b>	
<b>Comments</b>			

---

<b>System</b>	Ordovician		
<b>Series</b>			
<b>Group</b>			
<b>Formation</b>	Maquoketa		
<b>Member</b>	Ft. Atkinson Limestone		
<b>Submember</b>			
<b>Start Depth</b>	1225.00 ft	<b>End Depth</b>	1305.00 ft
<b>Contact Accuracy</b>			
<b>Penetration</b>			
<b>Primary Lithology</b>	Dolomite	<b>Percent</b>	0

<b>Secondary Lithology</b>	Chert/Chalcedony	<b>Percent</b>	0
<b>Tertiary Lithology</b>	Shale	<b>Percent</b>	0
<b>Comments</b>			

---

<b>System</b>	Ordovician		
<b>Series</b>			
<b>Group</b>			
<b>Formation</b>	Maquoketa		
<b>Member</b>	Clermont Shale		
<b>Submember</b>			
<b>Start Depth</b>	1305.00 ft	<b>End Depth</b>	1350.00 ft
<b>Contact Accuracy</b>			
<b>Penetration</b>			
<b>Primary Lithology</b>	Shale	<b>Percent</b>	0
<b>Secondary Lithology</b>	Dolomite	<b>Percent</b>	0
<b>Tertiary Lithology</b>		<b>Percent</b>	
<b>Comments</b>			

---

<b>System</b>	Ordovician		
<b>Series</b>			
<b>Group</b>			
<b>Formation</b>	Maquoketa		
<b>Member</b>	Elgin Limestone		
<b>Submember</b>			
<b>Start Depth</b>	1350.00 ft	<b>End Depth</b>	1450.00 ft
<b>Contact Accuracy</b>			
<b>Penetration</b>			
<b>Primary Lithology</b>	Dolomite	<b>Percent</b>	0
<b>Secondary Lithology</b>	Chert/Chalcedony	<b>Percent</b>	0
<b>Tertiary Lithology</b>	Shale	<b>Percent</b>	0
<b>Comments</b>			

---

<b>System</b>	Unknown		
<b>Series</b>			
<b>Group</b>			
<b>Formation</b>			
<b>Member</b>			
<b>Submember</b>			
<b>Start Depth</b>	1450.00 ft	<b>End Depth</b>	1615.00 ft
<b>Contact Accuracy</b>			
<b>Penetration</b>			
<b>Primary Lithology</b>	Dolomite	<b>Percent</b>	0
<b>Secondary Lithology</b>	Shale	<b>Percent</b>	0
<b>Tertiary Lithology</b>	Chert/Chalcedony	<b>Percent</b>	0
<b>Comments</b>			

---

<b>System</b>	Ordovician		
<b>Series</b>			
<b>Group</b>	Galena		

<b>Formation</b>	Decorah/Platteville Undiff.		
<b>Member</b>			
<b>Submember</b>			
<b>Start Depth</b>	1615.00 ft	<b>End Depth</b>	1680.00 ft
<b>Contact Accuracy</b>			
<b>Penetration</b>			
<b>Primary Lithology</b>	Dolomite	<b>Percent</b>	0
<b>Secondary Lithology</b>	Shale	<b>Percent</b>	0
<b>Tertiary Lithology</b>		<b>Percent</b>	
<b>Comments</b>			

---

<b>System</b>	Ordovician		
<b>Series</b>			
<b>Group</b>	Ansell		
<b>Formation</b>	St. Peter Sandstone		
<b>Member</b>			
<b>Submember</b>			
<b>Start Depth</b>	1680.00 ft	<b>End Depth</b>	1715.00 ft
<b>Contact Accuracy</b>			
<b>Penetration</b>			
<b>Primary Lithology</b>	Sandstone	<b>Percent</b>	0
<b>Secondary Lithology</b>	Siltstone	<b>Percent</b>	0
<b>Tertiary Lithology</b>		<b>Percent</b>	
<b>Comments</b>			

---

<b>System</b>	Ordovician		
<b>Series</b>			
<b>Group</b>	Prairie Du Chien		
<b>Formation</b>	Shakopee		
<b>Member</b>	Willow River		
<b>Submember</b>			
<b>Start Depth</b>	1715.00 ft	<b>End Depth</b>	1870.00 ft
<b>Contact Accuracy</b>			
<b>Penetration</b>			
<b>Primary Lithology</b>	Dolomite	<b>Percent</b>	0
<b>Secondary Lithology</b>	Sandstone	<b>Percent</b>	0
<b>Tertiary Lithology</b>	Siltstone	<b>Percent</b>	0
<b>Comments</b>			

---

<b>System</b>	Ordovician		
<b>Series</b>			
<b>Group</b>	Prairie Du Chien		
<b>Formation</b>	Shakopee		
<b>Member</b>	New Richmond		
<b>Submember</b>			
<b>Start Depth</b>	1870.00 ft	<b>End Depth</b>	1965.00 ft
<b>Contact Accuracy</b>			
<b>Penetration</b>			
<b>Primary Lithology</b>	Dolomite	<b>Percent</b>	0



<b>Secondary Lithology</b>	Sandstone	<b>Percent</b>	0
<b>Tertiary Lithology</b>		<b>Percent</b>	
<b>Comments</b>			

---

<b>System</b>	Ordovician		
<b>Series</b>			
<b>Group</b>	Prairie Du Chien		
<b>Formation</b>	Oneota		
<b>Member</b>			
<b>Submember</b>			
<b>Start Depth</b>	1965.00 ft	<b>End Depth</b>	2150.00 ft
<b>Contact Accuracy</b>			
<b>Penetration</b>			
<b>Primary Lithology</b>	Dolomite	<b>Percent</b>	0
<b>Secondary Lithology</b>	Chert/Chalcedony	<b>Percent</b>	0
<b>Tertiary Lithology</b>		<b>Percent</b>	
<b>Comments</b>			

---

<b>System</b>	Cambrian		
<b>Series</b>			
<b>Group</b>			
<b>Formation</b>	Jordan		
<b>Member</b>			
<b>Submember</b>			
<b>Start Depth</b>	2150.00 ft	<b>End Depth</b>	2157.00 ft
<b>Contact Accuracy</b>			
<b>Penetration</b>			
<b>Primary Lithology</b>	Sand	<b>Percent</b>	0
<b>Secondary Lithology</b>	Dolomite	<b>Percent</b>	0
<b>Tertiary Lithology</b>		<b>Percent</b>	
<b>Comments</b>			

## Water Production Information

<b>Date</b>	07/09/1981	<b>Start Time</b>	
<b>Aquifer</b>	Unknown		
<b>Static Water Level</b>	238.00 ft	<b>Yield</b>	506 gallons per minute
<b>Pumping Water Level</b>	238 ft	<b>Yield Method</b>	Unknown
<b>Measurement</b>	Unknown	<b>Pump Test</b>	No
<b>Pump Method</b>	Unknown	<b>Duration</b>	0 mins
<b>Comments</b>			

## Chip Storage Information

<b>Date</b>	06/23/1981		
<b>Storage</b>	OD1-422; OD1-463->467	<b>Bin</b>	
<b>Number of Boxes</b>	6	<b>Number of Samples</b>	429

<b>Sample Intervals</b>	5	<b>Sample Gaps</b>	500-05
<b>Sample Top</b>	0 ft	<b>Sample Bottom</b>	2155 ft
<b>Washed Top</b>	35 ft	<b>Washed Bottom</b>	2155 ft
<b>Duplicate Storage</b>			
<b>Comments</b>			

<https://www.ihr.uiowa.edu/igs/geosam/well/26319/general-information>