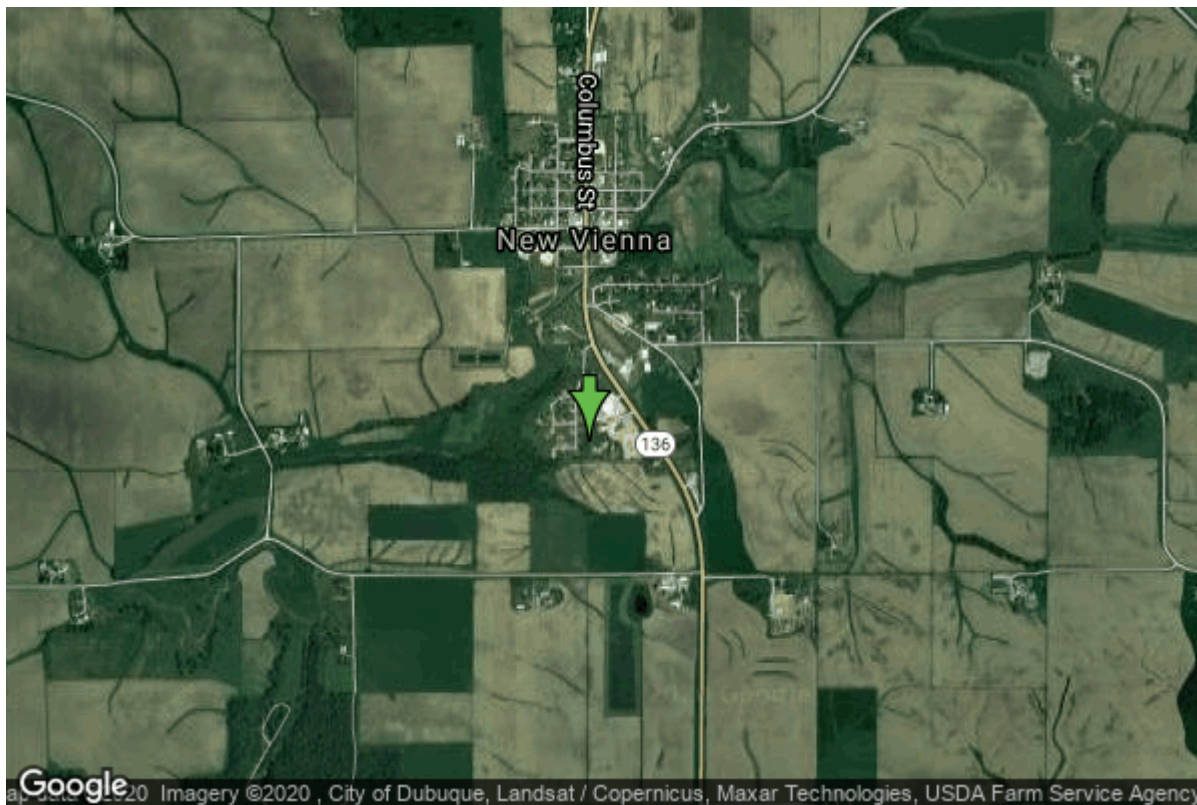


# Well W#26340 Information



<b>Date Received</b>		<b>State</b>	Iowa
<b>Owner Name</b>	New Vienna, City Of	<b>County</b>	Dubuque
<b>Alt Name</b>	#3	<b>Quadrangle</b>	New Vienna, Iowa
<b>WNumber</b>	26340	<b>Township</b>	T89N
<b>PWTS ID</b>	0	<b>Range</b>	R2W
<b>PWS ID</b>	3165014	<b>Section</b>	8
<b>Storet ID</b>	0	<b>Quarter</b>	NW NW SW
<b>SDWIS ID</b>	2408163	<b>Latitude</b>	42.5414100000
<b>USGS ID</b>	0	<b>Longitude</b>	-91.1133200000
<b>Project Operator</b>	Source Water Protection Unknown	<b>Accuracy</b>	
		<b>UTM X</b>	654921
		<b>UTM Y</b>	4711616

---

<b>Site Type</b>	Drilled hole	<b>Drilling Company</b>	Not Listed
<b>Well Status</b>	Standby	<b>Drilling Date</b>	08/18/1981
<b>Field Located</b>	No	<b>Drilling Method</b>	Rotary
<b>Elevation</b>	1052 ft	<b>Bedrock Depth</b>	0 ft
<b>Elevation Accuracy</b>	Digital Elevation Model Accurate to 5 ft	<b>Well Depth</b>	220 ft
<b>Landscape Position</b>	Upland	<b>Total Depth</b>	220 ft
		<b>Well Types</b>	Municipal, Public Supply
		<b>Aquifers</b>	Ordovician (abv St. Peter), Silurian

# Casing Construction Information

<b>Date</b>	08/18/1981	<b>Casing Type</b>	Steel
<b>Start Depth</b>	-2.00 ft	<b>End Depth</b>	46.30 ft
<b>Diameter</b>	8.00 in	<b>Amount</b>	48.30 ft
<b>Comments</b>			

# Log Information

<b>Date</b>	
<b>Log Types</b>	Strip log
<b>Prepared By</b>	Unknown
<b>Comments</b>	

---

<b>Date</b>	
<b>Log Types</b>	Drillers log
<b>Prepared By</b>	New Vienna, City Of
<b>Comments</b>	

# Stratigraphy Information

<b>System</b>	Quaternary		
<b>Series</b>	Pleistocene Series		
<b>Group</b>	Wisconsinan Episode		
<b>Formation</b>	Peoria		
<b>Member</b>			
<b>Submember</b>			
<b>Start Depth</b>	0.00 ft	<b>End Depth</b>	17.00 ft
<b>Contact Accuracy</b>			
<b>Penetration</b>			
<b>Primary Lithology</b>	Loess	<b>Percent</b>	100
<b>Secondary Lithology</b>		<b>Percent</b>	
<b>Tertiary Lithology</b>		<b>Percent</b>	
<b>Comments</b>			

---

<b>System</b>	Silurian		
<b>Series</b>			
<b>Group</b>			
<b>Formation</b>	Hopkinton		
<b>Member</b>			
<b>Submember</b>			
<b>Start Depth</b>	17.00 ft	<b>End Depth</b>	105.00 ft
<b>Contact Accuracy</b>			
<b>Penetration</b>			
<b>Primary Lithology</b>	Dolomite	<b>Percent</b>	0
<b>Secondary Lithology</b>	Chert/Chalcedony	<b>Percent</b>	0

Tertiary Lithology		Percent	
Comments			
<b>System</b>	Silurian		
<b>Series</b>			
<b>Group</b>			
<b>Formation</b>	Blanding		
<b>Member</b>			
<b>Submember</b>			
<b>Start Depth</b>	105.00 ft	<b>End Depth</b>	125.00 ft
<b>Contact Accuracy</b>			
<b>Penetration</b>			
<b>Primary Lithology</b>	Dolomite	<b>Percent</b>	0
<b>Secondary Lithology</b>	Chert/Chalcedony	<b>Percent</b>	0
<b>Tertiary Lithology</b>		<b>Percent</b>	
<b>Comments</b>			
<b>System</b>	Silurian		
<b>Series</b>			
<b>Group</b>			
<b>Formation</b>	Tete Des Morts		
<b>Member</b>			
<b>Submember</b>			
<b>Start Depth</b>	125.00 ft	<b>End Depth</b>	160.00 ft
<b>Contact Accuracy</b>			
<b>Penetration</b>			
<b>Primary Lithology</b>	Dolomite	<b>Percent</b>	0
<b>Secondary Lithology</b>	Chert/Chalcedony	<b>Percent</b>	0
<b>Tertiary Lithology</b>		<b>Percent</b>	
<b>Comments</b>			
<b>System</b>	Silurian		
<b>Series</b>			
<b>Group</b>			
<b>Formation</b>	Mosalem		
<b>Member</b>			
<b>Submember</b>			
<b>Start Depth</b>	160.00 ft	<b>End Depth</b>	203.00 ft
<b>Contact Accuracy</b>			
<b>Penetration</b>			
<b>Primary Lithology</b>	Dolomite	<b>Percent</b>	0
<b>Secondary Lithology</b>	Shale	<b>Percent</b>	0
<b>Tertiary Lithology</b>		<b>Percent</b>	
<b>Comments</b>			
<b>System</b>	Ordovician		
<b>Series</b>			
<b>Group</b>			
<b>Formation</b>	Maquoketa		

<b>Member</b>			
<b>Submember</b>			
<b>Start Depth</b>	203.00 ft	<b>End Depth</b>	220.00 ft
<b>Contact Accuracy</b>			
<b>Penetration</b>			
<b>Primary Lithology</b>	Shale	<b>Percent</b>	0
<b>Secondary Lithology</b>	Dolomite	<b>Percent</b>	0
<b>Tertiary Lithology</b>		<b>Percent</b>	
<b>Comments</b>			

## Water Production Information

<b>Date</b>	08/18/1981	<b>Start Time</b>	
<b>Aquifer</b>	Unknown		
<b>Static Water Level</b>	0.00 ft	<b>Yield</b>	10 gallons per minute
<b>Pumping Water Level</b>	0 ft	<b>Yield Method</b>	Unknown
<b>Measurement</b>	Unknown	<b>Pump Test</b>	No
<b>Pump Method</b>	Unknown	<b>Duration</b>	0 mins
<b>Comments</b>			

## Chip Storage Information

<b>Date</b>	08/31/1981		
<b>Storage</b>	OD1-427	<b>Bin</b>	
<b>Number of Boxes</b>	1	<b>Number of Samples</b>	43
<b>Sample Intervals</b>	5	<b>Sample Gaps</b>	0-5,35-40,95-100
<b>Sample Top</b>	5 ft	<b>Sample Bottom</b>	220 ft
<b>Washed Top</b>	16 ft	<b>Washed Bottom</b>	220 ft
<b>Duplicate Storage</b>			
<b>Comments</b>			

<https://www.iihr.uiowa.edu/igs/geosam/well/26340/general-information>