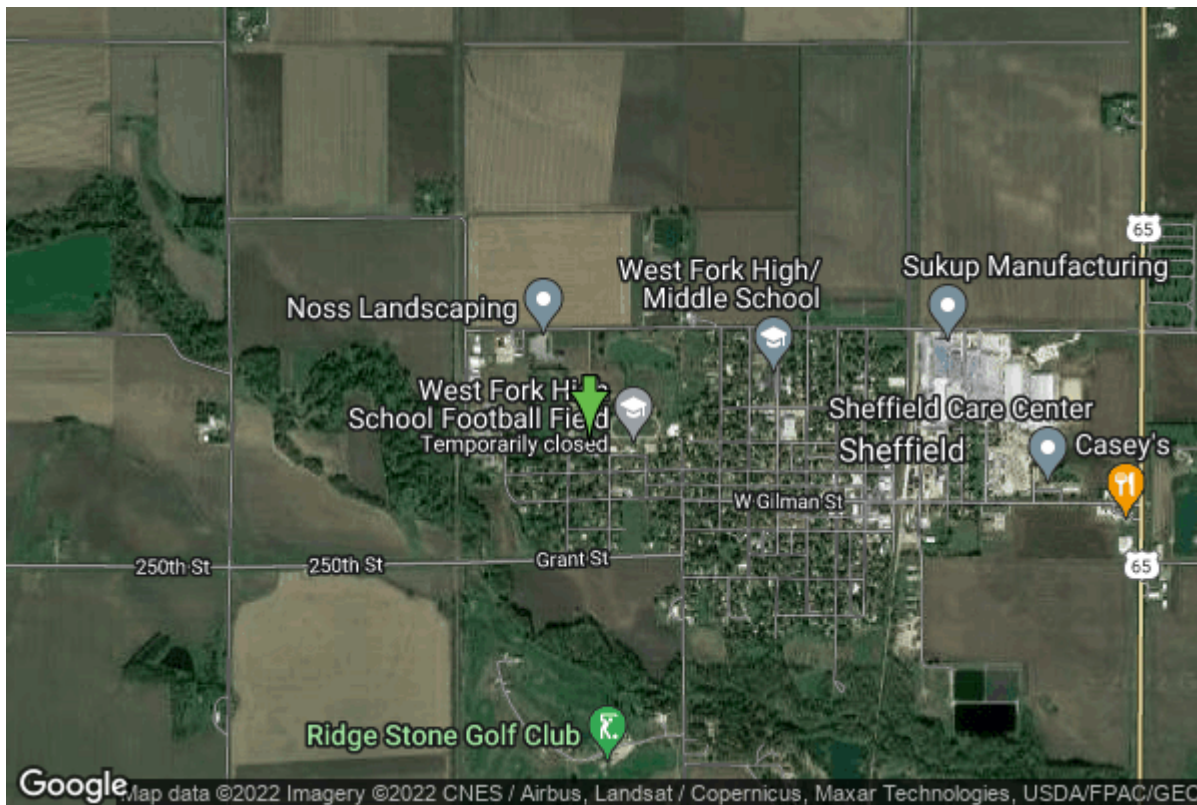


Well W#26585 Information



Date Received		State	Iowa
Owner Name	Sheffield, City Of	County	Franklin
Alt Name	#4	Quadrangle	Sheffield, Iowa
WNumber	26585	Township	T93N
PWTS ID	0	Range	R20W
PWS ID	3570037	Section	5
Storet ID	0	Quarter	SE SE NW
SDWIS ID	2410928	Latitude	42.8951300000
USGS ID	0	Longitude	-93.2252000000
Project	Source Water Protection	Accuracy	
Operator	Unknown	UTM X	481613
		UTM Y	4749194

Site Type	Drilled hole	Drilling Company	Layne Western - Ia.
Well Status	Active	Drilling Date	04/04/1980
Field Located	No	Drilling Method	Unknown
Elevation	1079 ft	Bedrock Depth	0 ft
Elevation Accuracy	Digital Elevation Model Accurate to 5 ft	Well Depth	446 ft
Landscape Position	Unknown	Total Depth	446 ft
		Well Types	Municipal, Public Supply
		Aquifers	Devonian

Log Information

Date	
Log Types	Strip log

Prepared By Wilcox, Bobby
Comments

Date
Log Types Drillers log
Prepared By Sheffield, City Of
Comments

Stratigraphy Information

System Quaternary
Series Pleistocene Series
Group
Formation
Member
Submember
Start Depth 0.00 ft **End Depth** 30.00 ft
Contact Accuracy
Penetration
Primary Lithology Sand And Gravel **Percent** 100
Secondary Lithology **Percent**
Tertiary Lithology **Percent**
Comments

System Devonian
Series
Group Yellow Spring (New Albany)
Formation Lime Creek
Member
Submember
Start Depth 30.00 ft **End Depth** 160.00 ft
Contact Accuracy
Penetration
Primary Lithology Limestone **Percent** 0
Secondary Lithology Shale **Percent** 0
Tertiary Lithology Siltstone **Percent** 0
Comments

System Devonian
Series
Group Cedar Valley
Formation
Member
Submember
Start Depth 160.00 ft **End Depth** 446.00 ft
Contact Accuracy
Penetration
Primary Lithology Limestone **Percent** 0

Secondary Lithology	Dolomite	Percent	0
Tertiary Lithology	Shale	Percent	0
Comments			

Chip Storage Information

Date	03/29/1982	Bin	
Storage	OD1-571,572	Number of Samples	87
Number of Boxes	2	Sample Gaps	245-50,375-80
Sample Intervals	5	Sample Bottom	445 ft
Sample Top	0 ft	Washed Bottom	445 ft
Washed Top	40 ft		
Duplicate Storage			
Comments			

<https://www.iihr.uiowa.edu/igs/geosam/well/26585/general-information>