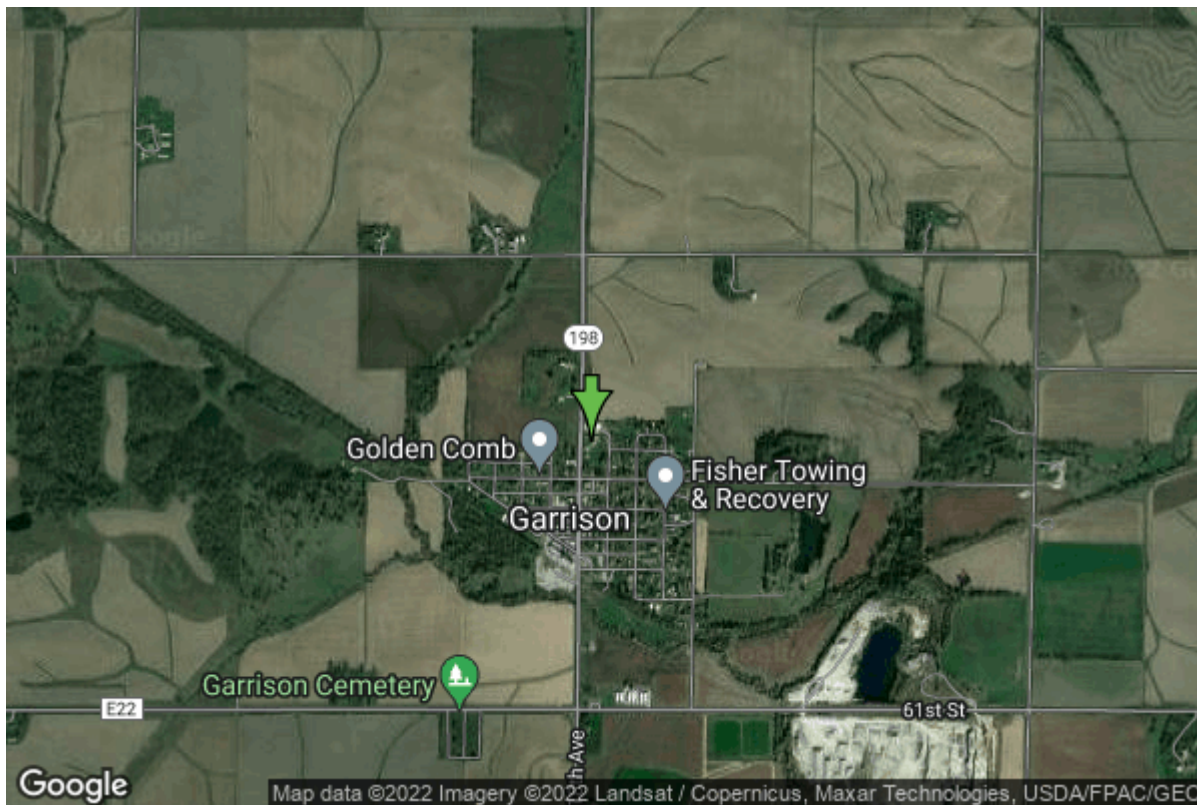


# Well W#27217 Information



<b>Date Received</b>		<b>State</b>	Iowa
<b>Owner Name</b>	Garrison, City Of	<b>County</b>	Benton
<b>Alt Name</b>	well #3	<b>Quadrangle</b>	Garrison, Iowa
<b>WNumber</b>	27217	<b>Township</b>	T85N
<b>PWTS ID</b>	0	<b>Range</b>	R11W
<b>PWS ID</b>	625078	<b>Section</b>	28
<b>Storet ID</b>	0	<b>Quarter</b>	NW SW SW
<b>SDWIS ID</b>	2411897	<b>Latitude</b>	42.1462940000
<b>USGS ID</b>	0	<b>Longitude</b>	-92.1425660000
<b>Project</b>	Unknown	<b>Accuracy</b>	
<b>Operator</b>	Unknown	<b>UTM X</b>	570848
		<b>UTM Y</b>	4666375

<b>Site Type</b>	Drilled hole	<b>Drilling Company</b>	Layne Western - Ia.
<b>Well Status</b>	Active	<b>Drilling Date</b>	06/22/1984
<b>Field Located</b>	No	<b>Drilling Method</b>	Rotary
<b>Elevation</b>	914 ft	<b>Bedrock Depth</b>	70 ft
<b>Elevation Accuracy</b>	Digital Elevation Model Accurate to 5 ft	<b>Well Depth</b>	470 ft
<b>Landscape Position</b>	Unknown	<b>Total Depth</b>	470 ft
		<b>Well Types</b>	Municipal
		<b>Aquifers</b>	Silurian/Devonian

## Hole Construction Information

<b>Date</b>	06/20/1984	<b>Depth</b>	19.00 ft
<b>Diameter</b>	24.00 in		

## Comments

---

Date	06/20/1984		
Diameter	18.00 in	Depth	150.00 ft
Comments			

---

Date	06/20/1984		
Diameter	13.00 in	Depth	471.00 ft
Comments			

## Casing Construction Information

Date	06/20/1984	Casing Type	Steel
Start Depth	-1.50 ft	End Depth	148.50 ft
Diameter	14.00 in	Amount	150.00 ft
Comments			

## Grout Construction Information

Date	06/20/1984		
Grout Type	Cement	Grout Placement	Unknown
Start Depth	0.00 ft	End Depth	150.00 ft
Comments			

## Log Information

Date	08/09/2002		
Log Types	Strip log		
Prepared By	L. Young		
Comments			

---

Date	06/22/1984		
Log Types	Drillers log		
Prepared By	Layne Western - Ia.		
Comments			

## Stratigraphy Information

System	Quaternary		
Series	Pleistocene Series		
Group			
Formation			
Member			
Submember			
Start Depth	0.00 ft	End Depth	70.00 ft

<b>Contact Accuracy</b>			
<b>Penetration</b>			
<b>Primary Lithology</b>	Soil Or Fill	<b>Percent</b>	0
<b>Secondary Lithology</b>	Sand	<b>Percent</b>	0
<b>Tertiary Lithology</b>		<b>Percent</b>	
<b>Comments</b>			
<hr/>			
<b>System</b>	Devonian		
<b>Series</b>			
<b>Group</b>	Cedar Valley		
<b>Formation</b>			
<b>Member</b>			
<b>Submember</b>			
<b>Start Depth</b>	70.00 ft	<b>End Depth</b>	246.00 ft
<b>Contact Accuracy</b>			
<b>Penetration</b>			
<b>Primary Lithology</b>	Limestone	<b>Percent</b>	0
<b>Secondary Lithology</b>	Dolomite	<b>Percent</b>	0
<b>Tertiary Lithology</b>		<b>Percent</b>	
<b>Comments</b>			
<hr/>			
<b>System</b>	Devonian		
<b>Series</b>			
<b>Group</b>	Wapsipinicon		
<b>Formation</b>			
<b>Member</b>			
<b>Submember</b>			
<b>Start Depth</b>	246.00 ft	<b>End Depth</b>	328.00 ft
<b>Contact Accuracy</b>			
<b>Penetration</b>			
<b>Primary Lithology</b>	Limestone	<b>Percent</b>	0
<b>Secondary Lithology</b>		<b>Percent</b>	
<b>Tertiary Lithology</b>		<b>Percent</b>	
<b>Comments</b>			
<hr/>			
<b>System</b>	Silurian		
<b>Series</b>			
<b>Group</b>			
<b>Formation</b>			
<b>Member</b>			
<b>Submember</b>			
<b>Start Depth</b>	328.00 ft	<b>End Depth</b>	470.00 ft
<b>Contact Accuracy</b>			
<b>Penetration</b>			
<b>Primary Lithology</b>	Limestone	<b>Percent</b>	0
<b>Secondary Lithology</b>	Chert/Chalcedony	<b>Percent</b>	0
<b>Tertiary Lithology</b>		<b>Percent</b>	
<b>Comments</b>			

# Water Production Information

<b>Date</b>		<b>Start Time</b>	
<b>Aquifer</b>	Unknown	<b>Yield</b>	0 gallons per minute
<b>Static Water Level</b>	0.00 ft	<b>Yield Method</b>	Unknown
<b>Pumping Water Level</b>	0 ft	<b>Pump Test</b>	Yes
<b>Measurement</b>	Unknown	<b>Duration</b>	0 mins
<b>Pump Method</b>	Unknown		
<b>Comments</b>			

# Chip Storage Information

<b>Date</b>	05/09/1984	<b>Bin</b>	
<b>Storage</b>	OD1-979>980	<b>Number of Samples</b>	94
<b>Number of Boxes</b>	2	<b>Sample Gaps</b>	
<b>Sample Intervals</b>	5	<b>Sample Bottom</b>	470 ft
<b>Sample Top</b>	0 ft	<b>Washed Bottom</b>	470 ft
<b>Washed Top</b>	70 ft		
<b>Duplicate Storage</b>			
<b>Comments</b>			

<https://www.iuhr.uiowa.edu/igs/geosam/well/27217/general-information>