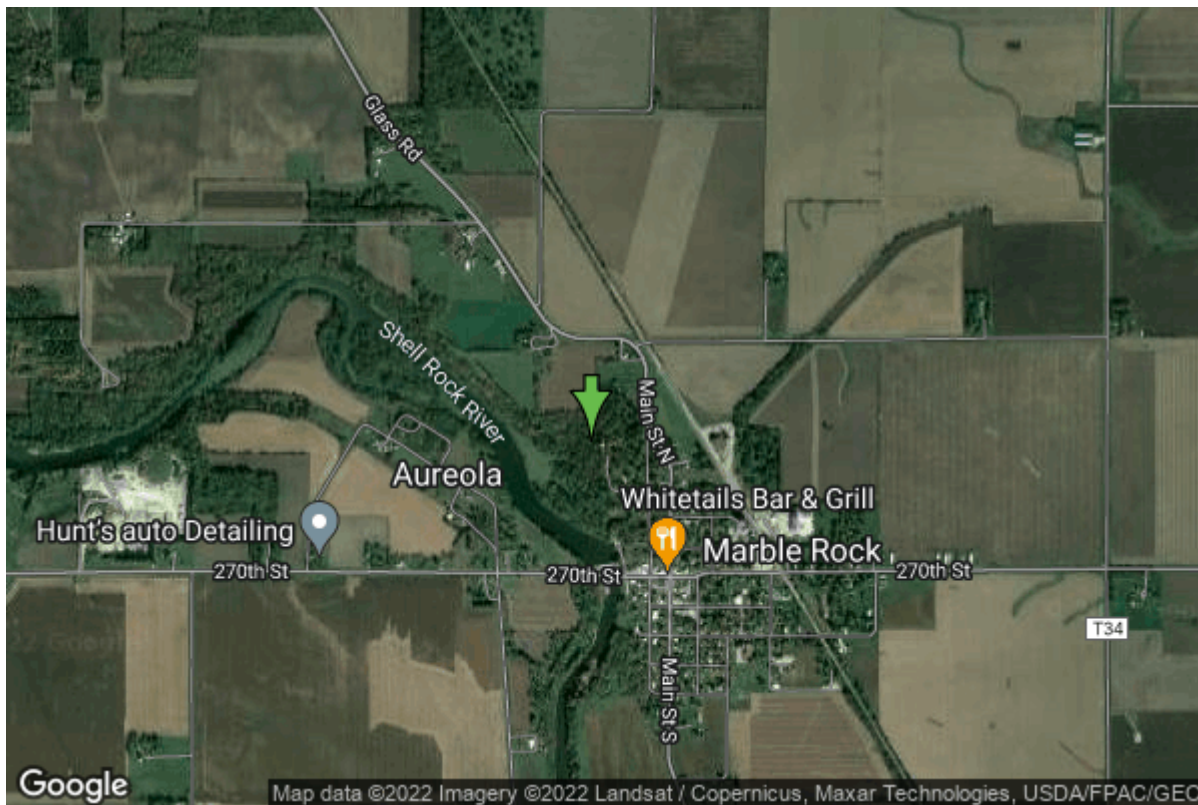


Well W#27236 Information



Date Received		State	Iowa
Owner Name	Marble Rock, City Of	County	Floyd
Alt Name		Quadrangle	Greene, Iowa
WNumber	27236	Township	T94N
PWTS ID	0	Range	R17W
PWS ID	3420031	Section	8
Storet ID	0	Quarter	SE NE SE
SDWIS ID	0	Latitude	42.9692770000
USGS ID	0	Longitude	-92.8711100000
Project	Unknown	Accuracy	
Operator	Unknown	UTM X	510511
		UTM Y	4757411

Site Type	Drilled hole	Drilling Company	Shawver Well Co.
Well Status	Unknown	Drilling Date	08/09/1983
Field Located	No	Drilling Method	Unknown
Elevation	1012 ft	Bedrock Depth	3 ft
Elevation Accuracy	Digital Elevation Model Accurate to 20 ft	Well Depth	300 ft
Landscape Position	Unknown	Total Depth	300 ft
		Well Types	Municipal
		Aquifers	

Casing Construction Information

Date	07/31/1983	Casing Type	Unknown
Start Depth	0.00 ft	End Depth	0.00 ft

Diameter	10.00 in	Amount	181.00 ft
Comments			

Log Information

Date	03/17/2010
Log Types	Strip log
Prepared By	Unknown
Comments	

Date	
Log Types	Drillers log
Prepared By	Marble Rock, City Of
Comments	

Stratigraphy Information

System	Quaternary		
Series	Pleistocene Series		
Group			
Formation			
Member			
Submember			
Start Depth	0.00 ft	End Depth	3.00 ft
Contact Accuracy			
Penetration			
Primary Lithology	Till - Oxidized And Leached	Percent	100
Secondary Lithology		Percent	
Tertiary Lithology		Percent	
Comments			

System	Devonian		
Series			
Group	Cedar Valley		
Formation			
Member			
Submember			
Start Depth	3.00 ft	End Depth	300.00 ft
Contact Accuracy			
Penetration			
Primary Lithology	Dolomite	Percent	80
Secondary Lithology	Limestone	Percent	19
Tertiary Lithology	Chert/Chalcedony	Percent	1
Comments			

Chip Storage Information

Date	06/30/1984		
Storage	OD1-989	Bin	
Number of Boxes	1	Number of Samples	61
Sample Intervals	5	Sample Gaps	
Sample Top	0 ft	Sample Bottom	300 ft
Washed Top	3 ft	Washed Bottom	300 ft
Duplicate Storage			
Comments			

<https://www.iihr.uiowa.edu/igs/geosam/well/27236/general-information>