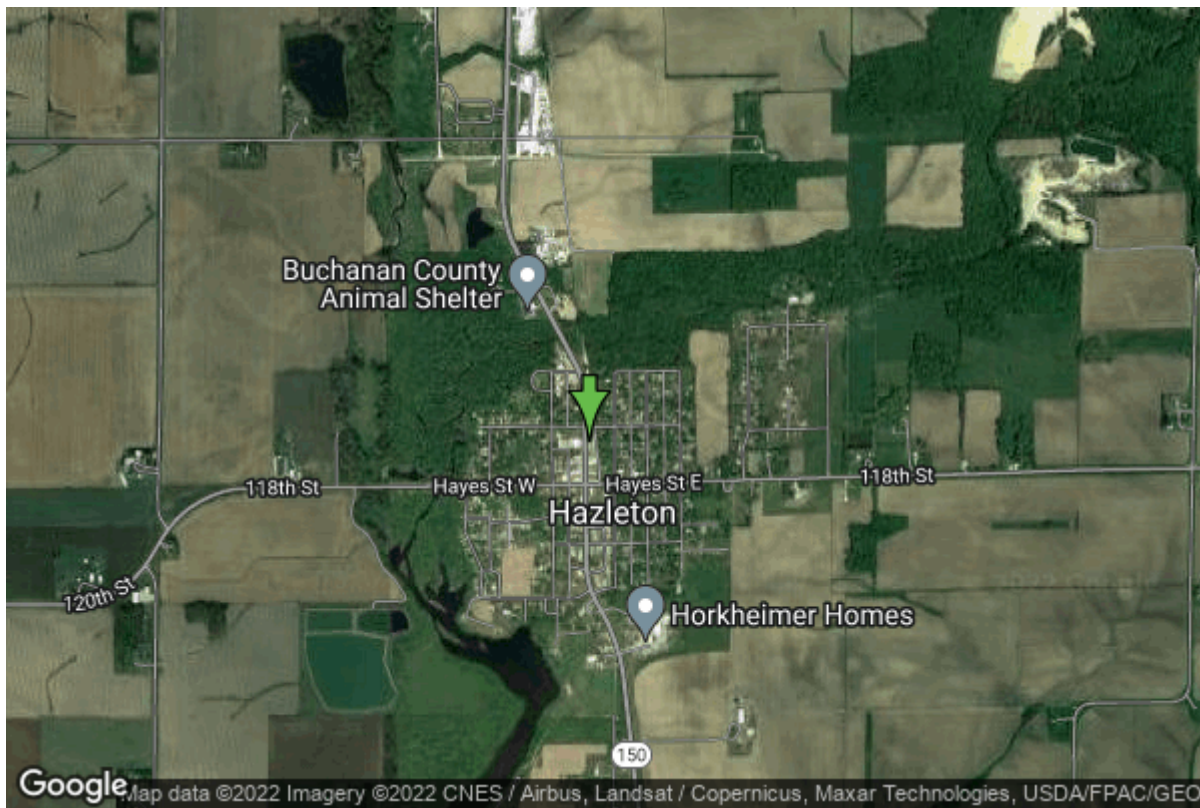


# Well W#27535 Information



<b>Date Received</b>	01/01/1985	<b>State</b>	Iowa
<b>Owner Name</b>	Hazleton, City Of	<b>County</b>	Buchanan
<b>Alt Name</b>	#3	<b>Quadrangle</b>	Hazleton, Iowa
<b>WNumber</b>	27535	<b>Township</b>	T90N
<b>PWTS ID</b>	0	<b>Range</b>	R9W
<b>PWS ID</b>	1031044	<b>Section</b>	9
<b>Storet ID</b>	0	<b>Quarter</b>	SE NE SE
<b>SDWIS ID</b>	2409255	<b>Latitude</b>	42.6188050000
<b>USGS ID</b>	0	<b>Longitude</b>	-91.9046820000
<b>Project</b>	Source Water Protection	<b>Accuracy</b>	
<b>Operator</b>	Unknown	<b>UTM X</b>	589828
		<b>UTM Y</b>	4719067

<b>Site Type</b>	Drilled hole	<b>Drilling Company</b>	Winslow Well Co.
<b>Well Status</b>	Active	<b>Drilling Date</b>	01/01/1985
<b>Field Located</b>	No	<b>Drilling Method</b>	Unknown
<b>Elevation</b>	997 ft	<b>Bedrock Depth</b>	0 ft
<b>Elevation Accuracy</b>	Digital Elevation Model Accurate to 5 ft	<b>Well Depth</b>	1201 ft
<b>Landscape Position</b>	Unknown	<b>Total Depth</b>	1201 ft
		<b>Well Types</b>	Municipal, Public Supply
		<b>Aquifers</b>	Cambrian-Ordovician

## Log Information

<b>Date</b>	
<b>Log Types</b>	Strip log

Prepared By  
Comments

Unknown

## Stratigraphy Information

<b>System</b>	Quaternary		
<b>Series</b>	Pleistocene Series		
<b>Group</b>	Wisconsinan Episode		
<b>Formation</b>			
<b>Member</b>			
<b>Submember</b>			
<b>Start Depth</b>	0.00 ft	<b>End Depth</b>	48.00 ft
<b>Contact Accuracy</b>			
<b>Penetration</b>			
<b>Primary Lithology</b>	Sand And Gravel	<b>Percent</b>	100
<b>Secondary Lithology</b>		<b>Percent</b>	
<b>Tertiary Lithology</b>		<b>Percent</b>	
<b>Comments</b>			

---

<b>System</b>	Silurian		
<b>Series</b>			
<b>Group</b>			
<b>Formation</b>			
<b>Member</b>			
<b>Submember</b>			
<b>Start Depth</b>	48.00 ft	<b>End Depth</b>	67.00 ft
<b>Contact Accuracy</b>			
<b>Penetration</b>			
<b>Primary Lithology</b>	Dolomite	<b>Percent</b>	100
<b>Secondary Lithology</b>		<b>Percent</b>	
<b>Tertiary Lithology</b>		<b>Percent</b>	
<b>Comments</b>			

---

<b>System</b>	Ordovician		
<b>Series</b>			
<b>Group</b>			
<b>Formation</b>	Maquoketa		
<b>Member</b>	Brainard Shale		
<b>Submember</b>			
<b>Start Depth</b>	67.00 ft	<b>End Depth</b>	120.00 ft
<b>Contact Accuracy</b>			
<b>Penetration</b>			
<b>Primary Lithology</b>	Shale	<b>Percent</b>	0
<b>Secondary Lithology</b>	Dolomite	<b>Percent</b>	0
<b>Tertiary Lithology</b>		<b>Percent</b>	
<b>Comments</b>			

---

<b>System</b>	Ordovician		
---------------	------------	--	--

**Series**  
**Group**  
**Formation** Maquoketa  
**Member** Ft. Atkinson Limestone  
**Submember**  
**Start Depth** 120.00 ft      **End Depth** 150.00 ft  
**Contact Accuracy**  
**Penetration**  
**Primary Lithology** Dolomite      **Percent** 0  
**Secondary Lithology** Shale      **Percent** 0  
**Tertiary Lithology**      **Percent**  
**Comments**

---

**System** Ordovician  
**Series**  
**Group**  
**Formation** Maquoketa  
**Member** Clermont Shale  
**Submember**  
**Start Depth** 150.00 ft      **End Depth** 225.00 ft  
**Contact Accuracy**  
**Penetration**  
**Primary Lithology** Shale      **Percent** 0  
**Secondary Lithology** Dolomite      **Percent** 0  
**Tertiary Lithology**      **Percent**  
**Comments**

---

**System** Ordovician  
**Series**  
**Group**  
**Formation** Maquoketa  
**Member** Elgin Limestone  
**Submember**  
**Start Depth** 225.00 ft      **End Depth** 357.00 ft  
**Contact Accuracy**  
**Penetration**  
**Primary Lithology** Ls/Dol Mixed      **Percent** 0  
**Secondary Lithology** Shale      **Percent** 0  
**Tertiary Lithology** Chert/Chalcedony      **Percent** 0  
**Comments**

---

**System** Ordovician  
**Series**  
**Group** Galena  
**Formation**  
**Member**  
**Submember**  
**Start Depth** 357.00 ft      **End Depth** 570.00 ft  
**Contact Accuracy**

<b>Penetration</b>			
<b>Primary Lithology</b>	Limestone	<b>Percent</b>	100
<b>Secondary Lithology</b>		<b>Percent</b>	
<b>Tertiary Lithology</b>		<b>Percent</b>	
<b>Comments</b>			

---

<b>System</b>	Ordovician		
<b>Series</b>			
<b>Group</b>	Galena		
<b>Formation</b>	Decorah		
<b>Member</b>			
<b>Submember</b>			
<b>Start Depth</b>	570.00 ft	<b>End Depth</b>	610.00 ft
<b>Contact Accuracy</b>			
<b>Penetration</b>			
<b>Primary Lithology</b>	Limestone	<b>Percent</b>	0
<b>Secondary Lithology</b>	Shale	<b>Percent</b>	0
<b>Tertiary Lithology</b>		<b>Percent</b>	
<b>Comments</b>			

---

<b>System</b>	Ordovician		
<b>Series</b>			
<b>Group</b>	Galena		
<b>Formation</b>	Platteville		
<b>Member</b>			
<b>Submember</b>			
<b>Start Depth</b>	610.00 ft	<b>End Depth</b>	663.00 ft
<b>Contact Accuracy</b>			
<b>Penetration</b>			
<b>Primary Lithology</b>	Limestone	<b>Percent</b>	0
<b>Secondary Lithology</b>	Shale	<b>Percent</b>	0
<b>Tertiary Lithology</b>		<b>Percent</b>	
<b>Comments</b>			

---

<b>System</b>	Ordovician		
<b>Series</b>			
<b>Group</b>	Ancell		
<b>Formation</b>	Glenwood		
<b>Member</b>			
<b>Submember</b>			
<b>Start Depth</b>	663.00 ft	<b>End Depth</b>	667.00 ft
<b>Contact Accuracy</b>			
<b>Penetration</b>			
<b>Primary Lithology</b>	Shale	<b>Percent</b>	100
<b>Secondary Lithology</b>		<b>Percent</b>	
<b>Tertiary Lithology</b>		<b>Percent</b>	
<b>Comments</b>			

---

<b>System</b>	Ordovician		
---------------	------------	--	--

**Series**  
**Group** Ancell  
**Formation** St. Peter Sandstone  
**Member**  
**Submember**  
**Start Depth** 667.00 ft **End Depth** 710.00 ft  
**Contact Accuracy**  
**Penetration**  
**Primary Lithology** Sandstone **Percent** 100  
**Secondary Lithology** **Percent**  
**Tertiary Lithology** **Percent**  
**Comments**

---

**System** Ordovician  
**Series**  
**Group** Prairie Du Chien  
**Formation** Shakopee  
**Member**  
**Submember**  
**Start Depth** 710.00 ft **End Depth** 820.00 ft  
**Contact Accuracy**  
**Penetration**  
**Primary Lithology** Dolomite **Percent** 0  
**Secondary Lithology** Sandstone **Percent** 0  
**Tertiary Lithology** Chert/Chalcedony **Percent** 0  
**Comments**

---

**System** Ordovician  
**Series**  
**Group** Prairie Du Chien  
**Formation** Oneota  
**Member**  
**Submember**  
**Start Depth** 820.00 ft **End Depth** 1000.00 ft  
**Contact Accuracy**  
**Penetration**  
**Primary Lithology** Dolomite **Percent** 0  
**Secondary Lithology** Chert/Chalcedony **Percent** 0  
**Tertiary Lithology** Sandstone **Percent** 0  
**Comments**

---

**System** Cambrian  
**Series**  
**Group**  
**Formation** Jordan  
**Member**  
**Submember**  
**Start Depth** 1000.00 ft **End Depth** 1200.00 ft  
**Contact Accuracy**

<b>Penetration</b>			
<b>Primary Lithology</b>	Sandstone	<b>Percent</b>	0
<b>Secondary Lithology</b>	Dolomite	<b>Percent</b>	0
<b>Tertiary Lithology</b>		<b>Percent</b>	
<b>Comments</b>			

---

<b>System</b>	Cambrian		
<b>Series</b>			
<b>Group</b>			
<b>Formation</b>	St. Lawrence		
<b>Member</b>			
<b>Submember</b>			
<b>Start Depth</b>	1200.00 ft	<b>End Depth</b>	1201.00 ft
<b>Contact Accuracy</b>			
<b>Penetration</b>			
<b>Primary Lithology</b>	Dolomite	<b>Percent</b>	0
<b>Secondary Lithology</b>	Sandstone	<b>Percent</b>	0
<b>Tertiary Lithology</b>		<b>Percent</b>	
<b>Comments</b>			

## Water Production Information

<b>Date</b>	09/01/2014	<b>Start Time</b>	
<b>Aquifer</b>			
<b>Static Water Level</b>	281.00 ft	<b>Yield</b>	0 gallons per minute
<b>Pumping Water Level</b>	294 ft	<b>Yield Method</b>	Unknown
<b>Measurement</b>	Unknown	<b>Pump Test</b>	No
<b>Pump Method</b>	Unknown	<b>Duration</b>	0 mins
<b>Comments</b>	Water levels taken from DNR Jordan questionnaire.		

## Chip Storage Information

<b>Date</b>	08/16/1985		
<b>Storage</b>	OD2-140->142	<b>Bin</b>	
<b>Number of Boxes</b>	3	<b>Number of Samples</b>	215
<b>Sample Intervals</b>	5	<b>Sample Gaps</b>	15-35,700-705,1195-1200
<b>Sample Top</b>	0 ft	<b>Sample Bottom</b>	1201 ft
<b>Washed Top</b>	50 ft	<b>Washed Bottom</b>	1201 ft
<b>Duplicate Storage</b>			
<b>Comments</b>			

<https://www.iihr.uiowa.edu/igs/geosam/well/27535/general-information>