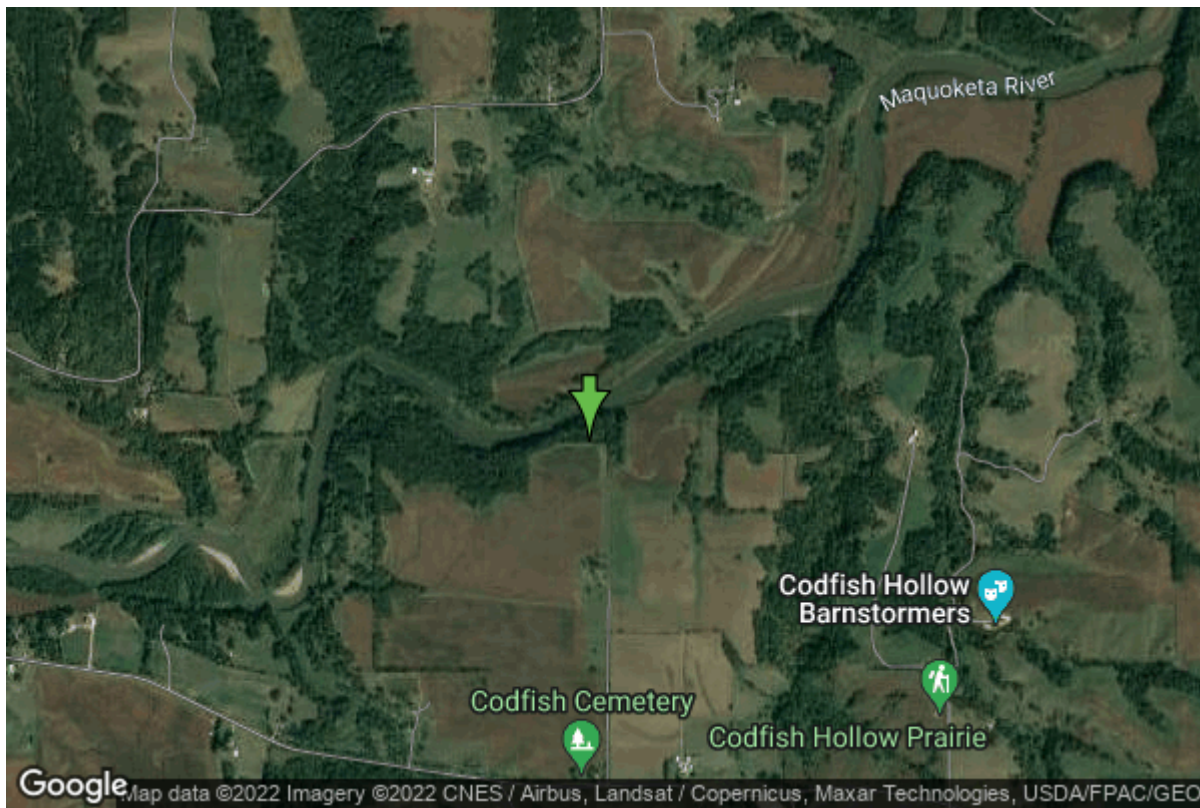


Well W#27575 Information



Date Received		State	Iowa
Owner Name	Frost	County	Jackson
Alt Name	SS-3	Quadrangle	Delmar North, Iowa
WNumber	27575	Township	T84N
PWTS ID	0	Range	R3E
PWS ID	0	Section	14
Storet ID	0	Quarter	
SDWIS ID	0	Latitude	42.0834890000
USGS ID	0	Longitude	-90.5784490000
Project	Unknown	Accuracy	
Operator	Cominco	UTM X	700291
		UTM Y	4661884

Site Type	Drilled hole	Drilling Company	Unknown
Well Status	Unknown	Drilling Date	08/01/1973
Field Located	No	Drilling Method	Unknown
Elevation	691 ft	Bedrock Depth	0 ft
Elevation Accuracy	Digital Elevation Model Accurate to 5 ft	Well Depth	1161 ft
Landscape Position	Unknown	Total Depth	1161 ft
		Well Types	Exploration (Other)
		Aquifers	

Log Information

Date	
Log Types	Unknown

Prepared By Unknown
Comments

Stratigraphy Information

System	Ordovician		
Series			
Group	Galena		
Formation	Decorah		
Member	Spechts Ferry		
Submember			
Start Depth	685.00 ft	End Depth	693.00 ft
Contact Accuracy			
Penetration			
Primary Lithology	Shale	Percent	75
Secondary Lithology	Limestone	Percent	25
Tertiary Lithology	Unknown	Percent	0
Comments			

System	Ordovician		
Series			
Group	Galena		
Formation	Platteville		
Member	Quimbys Mill		
Submember			
Start Depth	693.00 ft	End Depth	702.00 ft
Contact Accuracy			
Penetration			
Primary Lithology	Limestone	Percent	0
Secondary Lithology		Percent	
Tertiary Lithology		Percent	
Comments			

System	Ordovician		
Series			
Group	Galena		
Formation	Platteville		
Member	Mcgregor		
Submember			
Start Depth	702.00 ft	End Depth	736.00 ft
Contact Accuracy			
Penetration			
Primary Lithology	Limestone	Percent	0
Secondary Lithology	Dolomite	Percent	0
Tertiary Lithology	Shale	Percent	0
Comments			

System	Ordovician		
---------------	------------	--	--

Series			
Group	Galena		
Formation	Platteville		
Member	Pecatonica		
Submember			
Start Depth	736.00 ft	End Depth	750.00 ft
Contact Accuracy			
Penetration			
Primary Lithology	Dolomite	Percent	100
Secondary Lithology	Unknown	Percent	0
Tertiary Lithology	Unknown	Percent	0
Comments			

System	Ordovician		
Series			
Group	Ancell		
Formation	Glenwood		
Member			
Submember			
Start Depth	750.00 ft	End Depth	758.00 ft
Contact Accuracy			
Penetration			
Primary Lithology	Shale	Percent	99
Secondary Lithology	Sandstone	Percent	1
Tertiary Lithology		Percent	
Comments			

System	Ordovician		
Series			
Group	Ancell		
Formation	St. Peter Sandstone		
Member	Tonti		
Submember			
Start Depth	758.00 ft	End Depth	1126.00 ft
Contact Accuracy			
Penetration			
Primary Lithology	Sandstone	Percent	100
Secondary Lithology		Percent	
Tertiary Lithology		Percent	
Comments			

System	Ordovician		
Series			
Group	Ancell		
Formation	St. Peter Sandstone		
Member	Readstown		
Submember			
Start Depth	1126.00 ft	End Depth	1158.00 ft
Contact Accuracy			

Penetration			
Primary Lithology	Shale	Percent	40
Secondary Lithology	Sandstone	Percent	35
Tertiary Lithology	Chert/Chalcedony	Percent	25
Comments			

System	Ordovician		
Series			
Group	Prairie Du Chien		
Formation	Oneota		
Member			
Submember			
Start Depth	1158.00 ft	End Depth	1161.00 ft
Contact Accuracy			
Penetration			
Primary Lithology	Dolomite	Percent	95
Secondary Lithology	Sandstone	Percent	5
Tertiary Lithology		Percent	
Comments			

Core Storage Information

Date		Percent Recovery	0 %
Storage	C32R3 - C42LC3	Number Boxes	110
Start Depth	45.00 ft	End Depth	1161.00 ft
Diameter	Unknown	Split	Unknown
Microfossils	No	Thin Sections	No
Comments			

<https://www.ihr.uiowa.edu/igs/geosam/well/27575/general-information>