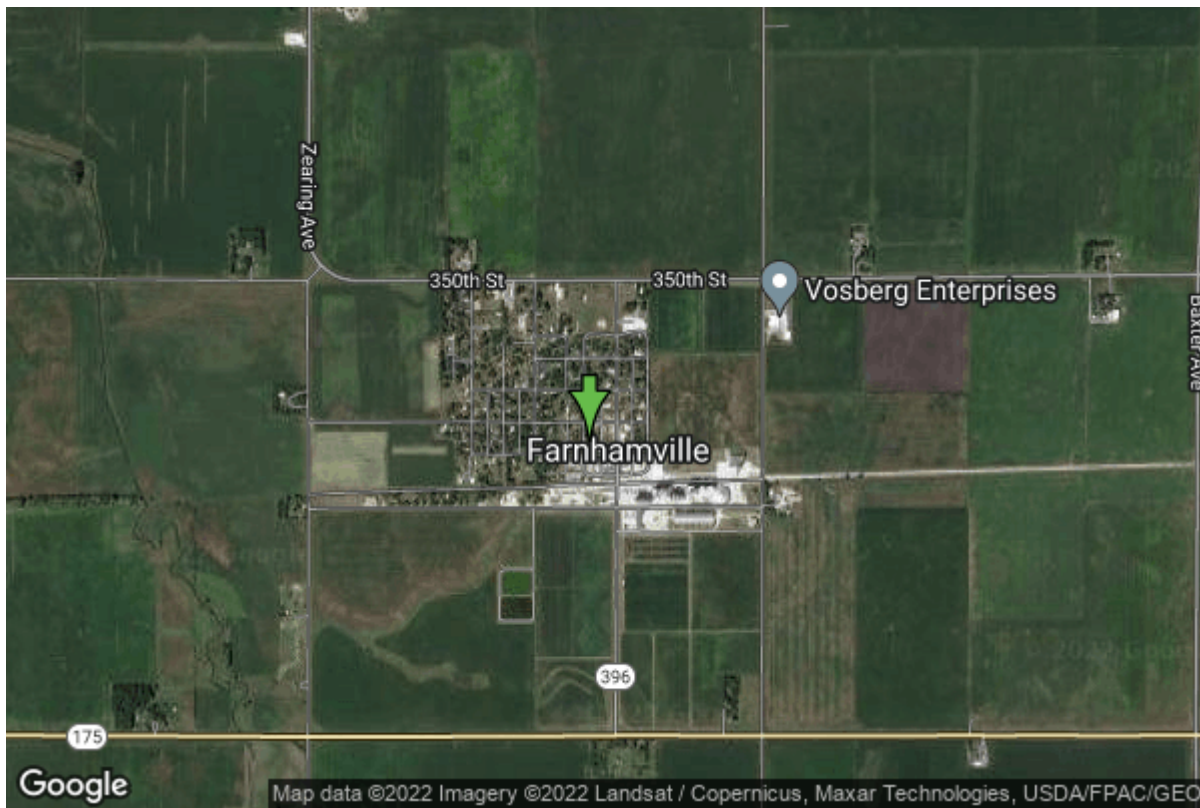


Well W#27634 Information



| | | | |
|----------------------|-------------------------|-------------------|--------------------|
| Date Received | 05/16/1986 | State | Iowa |
| Owner Name | Farnhamville, City Of | County | Calhoun |
| Alt Name | #3 | Quadrangle | Farnhamville, Iowa |
| WNumber | 27634 | Township | T86N |
| PWTS ID | 0 | Range | R31W |
| PWS ID | 1320039 | Section | 12 |
| Storet ID | 0 | Quarter | NE SW NE |
| SDWIS ID | 2410474 | Latitude | 42.2763720000 |
| USGS ID | 0 | Longitude | -94.4043450000 |
| Project | Source Water Protection | Accuracy | |
| Operator | Unknown | UTM X | 384199 |
| | | UTM Y | 4681417 |

| | | | |
|---------------------------|---|-------------------------|--------------------------|
| Site Type | Drilled hole | Drilling Company | Layne Western - Ia. |
| Well Status | Plugged | Drilling Date | 10/01/1985 |
| Field Located | No | Drilling Method | Rotary |
| Elevation | 1140 ft | Bedrock Depth | 0 ft |
| Elevation Accuracy | Digital Elevation Model Accurate to 5 ft | Well Depth | 825 ft |
| Landscape Position | Unknown | Total Depth | 825 ft |
| | | Well Types | Municipal, Public Supply |
| | | Aquifers | Devonian |

Hole Construction Information

| | | | |
|-----------------|------------|--------------|----------|
| Date | 10/08/1985 | Depth | 22.00 ft |
| Diameter | 22.00 in | | |

Comments

| | | | |
|----------|------------|-------|-----------|
| Date | 10/08/1985 | | |
| Diameter | 17.50 in | Depth | 325.00 ft |
| Comments | | | |

| | | | |
|----------|------------|-------|-----------|
| Date | 10/08/1985 | | |
| Diameter | 9.50 in | Depth | 825.00 ft |
| Comments | | | |

Casing Construction Information

| | | | |
|-------------|------------|-------------|-----------|
| Date | 10/08/1985 | Casing Type | Steel |
| Start Depth | 0.00 ft | End Depth | 323.00 ft |
| Diameter | 10.00 in | Amount | 323.00 ft |
| Comments | | | |

Grout Construction Information

| | | | |
|-------------|------------|-----------------|-----------|
| Date | 10/08/1985 | | |
| Grout Type | Cement | Grout Placement | Unknown |
| Start Depth | 0.00 ft | End Depth | 323.00 ft |
| Comments | | | |

Log Information

| | | | |
|-------------|------------|--|--|
| Date | 05/22/1986 | | |
| Log Types | Strip log | | |
| Prepared By | Unknown | | |
| Comments | | | |

| | | | |
|-------------|-----------------------|--|--|
| Date | | | |
| Log Types | Drillers log | | |
| Prepared By | Farnhamville, City Of | | |
| Comments | | | |

Stratigraphy Information

| | | | |
|-------------|------------|-----------|----------|
| System | Quaternary | | |
| Series | | | |
| Group | | | |
| Formation | | | |
| Member | | | |
| Submember | | | |
| Start Depth | 0.00 ft | End Depth | 10.00 ft |

| | | | |
|----------------------------|------------------------------------|------------------|-----------|
| Contact Accuracy | | | |
| Penetration | | | |
| Primary Lithology | Soil Or Fill | Percent | 100 |
| Secondary Lithology | Unknown | Percent | 0 |
| Tertiary Lithology | Unknown | Percent | 0 |
| Comments | | | |
| <hr/> | | | |
| System | Quaternary | | |
| Series | Pleistocene Series | | |
| Group | Wisconsinan Episode | | |
| Formation | Dows | | |
| Member | | | |
| Submember | | | |
| Start Depth | 10.00 ft | End Depth | 15.00 ft |
| Contact Accuracy | | | |
| Penetration | | | |
| Primary Lithology | Sand | Percent | 100 |
| Secondary Lithology | | Percent | |
| Tertiary Lithology | | Percent | |
| Comments | | | |
| <hr/> | | | |
| System | Quaternary | | |
| Series | Pleistocene Series | | |
| Group | Wisconsinan Episode | | |
| Formation | Dows | | |
| Member | | | |
| Submember | | | |
| Start Depth | 15.00 ft | End Depth | 20.00 ft |
| Contact Accuracy | | | |
| Penetration | | | |
| Primary Lithology | Till - Unoxidized And Unleached | Percent | 100 |
| Secondary Lithology | | Percent | |
| Tertiary Lithology | | Percent | |
| Comments | | | |
| <hr/> | | | |
| System | Quaternary | | |
| Series | Pleistocene Series | | |
| Group | Wisconsinan Episode | | |
| Formation | Dows | | |
| Member | | | |
| Submember | | | |
| Start Depth | 20.00 ft | End Depth | 100.00 ft |
| Contact Accuracy | | | |
| Penetration | | | |
| Primary Lithology | Sand | Percent | 100 |
| Secondary Lithology | | Percent | |
| Tertiary Lithology | | Percent | |
| Comments | | | |

| | | | |
|----------------------------|---------------------|------------------|-----------|
| System | Quaternary | | |
| Series | Pleistocene Series | | |
| Group | Wisconsinan Episode | | |
| Formation | Dows | | |
| Member | | | |
| Submember | | | |
| Start Depth | 100.00 ft | End Depth | 140.00 ft |
| Contact Accuracy | | | |
| Penetration | | | |
| Primary Lithology | Sand And Gravel | Percent | 100 |
| Secondary Lithology | | Percent | |
| Tertiary Lithology | | Percent | |
| Comments | | | |

| | | | |
|----------------------------|------------------------------------|------------------|-----------|
| System | Quaternary | | |
| Series | Pleistocene Series | | |
| Group | | | |
| Formation | | | |
| Member | | | |
| Submember | | | |
| Start Depth | 140.00 ft | End Depth | 200.00 ft |
| Contact Accuracy | | | |
| Penetration | | | |
| Primary Lithology | Till - Unoxidized And Unleached | Percent | 100 |
| Secondary Lithology | Unknown | Percent | 0 |
| Tertiary Lithology | Unknown | Percent | 0 |
| Comments | | | |

| | | | |
|----------------------------|--------------------|------------------|-----------|
| System | Quaternary | | |
| Series | Pleistocene Series | | |
| Group | | | |
| Formation | | | |
| Member | | | |
| Submember | | | |
| Start Depth | 200.00 ft | End Depth | 215.00 ft |
| Contact Accuracy | | | |
| Penetration | | | |
| Primary Lithology | Sand | Percent | 100 |
| Secondary Lithology | | Percent | |
| Tertiary Lithology | | Percent | |
| Comments | | | |

| | | | |
|------------------|---|--|--|
| System | Pennsylvanian (Subsystem Of Carboniferous System) | | |
| Series | | | |
| Group | Cherokee | | |
| Formation | | | |
| Member | | | |

| | | | |
|----------------------------|---|------------------|-----------|
| Submember | | | |
| Start Depth | 215.00 ft | End Depth | 315.00 ft |
| Contact Accuracy | | | |
| Penetration | | | |
| Primary Lithology | Shale | Percent | 100 |
| Secondary Lithology | | Percent | |
| Tertiary Lithology | | Percent | |
| Comments | | | |
| <hr/> | | | |
| System | Mississippian (Subsystem Of Carboniferous System) | | |
| Series | | | |
| Group | | | |
| Formation | St. Louis | | |
| Member | | | |
| Submember | | | |
| Start Depth | 315.00 ft | End Depth | 340.00 ft |
| Contact Accuracy | | | |
| Penetration | | | |
| Primary Lithology | Dolomite | Percent | 0 |
| Secondary Lithology | Sandstone | Percent | 0 |
| Tertiary Lithology | | Percent | |
| Comments | | | |
| <hr/> | | | |
| System | Mississippian (Subsystem Of Carboniferous System) | | |
| Series | | | |
| Group | Augusta | | |
| Formation | | | |
| Member | | | |
| Submember | | | |
| Start Depth | 340.00 ft | End Depth | 460.00 ft |
| Contact Accuracy | | | |
| Penetration | | | |
| Primary Lithology | Limestone | Percent | 0 |
| Secondary Lithology | Dolomite | Percent | 0 |
| Tertiary Lithology | Chert/Chalcedony | Percent | 0 |
| Comments | | | |
| <hr/> | | | |
| System | Mississippian (Subsystem Of Carboniferous System) | | |
| Series | | | |
| Group | Sub-Augusta | | |
| Formation | Gilmore City | | |
| Member | | | |
| Submember | | | |
| Start Depth | 460.00 ft | End Depth | 750.00 ft |
| Contact Accuracy | | | |
| Penetration | | | |
| Primary Lithology | Limestone | Percent | 100 |
| Secondary Lithology | | Percent | |
| Tertiary Lithology | | Percent | |

Comments

| | | | |
|----------------------------|-----------|------------------|-----------|
| System | Devonian | | |
| Series | | | |
| Group | | | |
| Formation | | | |
| Member | | | |
| Submember | | | |
| Start Depth | 750.00 ft | End Depth | 825.00 ft |
| Contact Accuracy | | | |
| Penetration | | | |
| Primary Lithology | Limestone | Percent | 0 |
| Secondary Lithology | Shale | Percent | 0 |
| Tertiary Lithology | | Percent | |
| Comments | | | |

Water Production Information

| | | | |
|----------------------------|------------|---------------------|------------------------|
| Date | 10/07/1985 | Start Time | |
| Aquifer | Unknown | | |
| Static Water Level | 170.00 ft | Yield | 122 gallons per minute |
| Pumping Water Level | 332 ft | Yield Method | Unknown |
| Measurement | Unknown | Pump Test | Yes |
| Pump Method | Unknown | Duration | 1400 mins |
| Comments | | | |

Chip Storage Information

| | | | |
|--------------------------|-------------------|--------------------------|--------|
| Date | | Bin | |
| Storage | OD2-158, 160, 161 | Number of Samples | 165 |
| Number of Boxes | 3 | Sample Gaps | |
| Sample Intervals | 5 | Sample Bottom | 825 ft |
| Sample Top | 0 ft | Washed Bottom | 825 ft |
| Washed Top | 200 ft | | |
| Duplicate Storage | | | |
| Comments | | | |

<https://www.iihr.uiowa.edu/igs/geosam/well/27634/general-information>