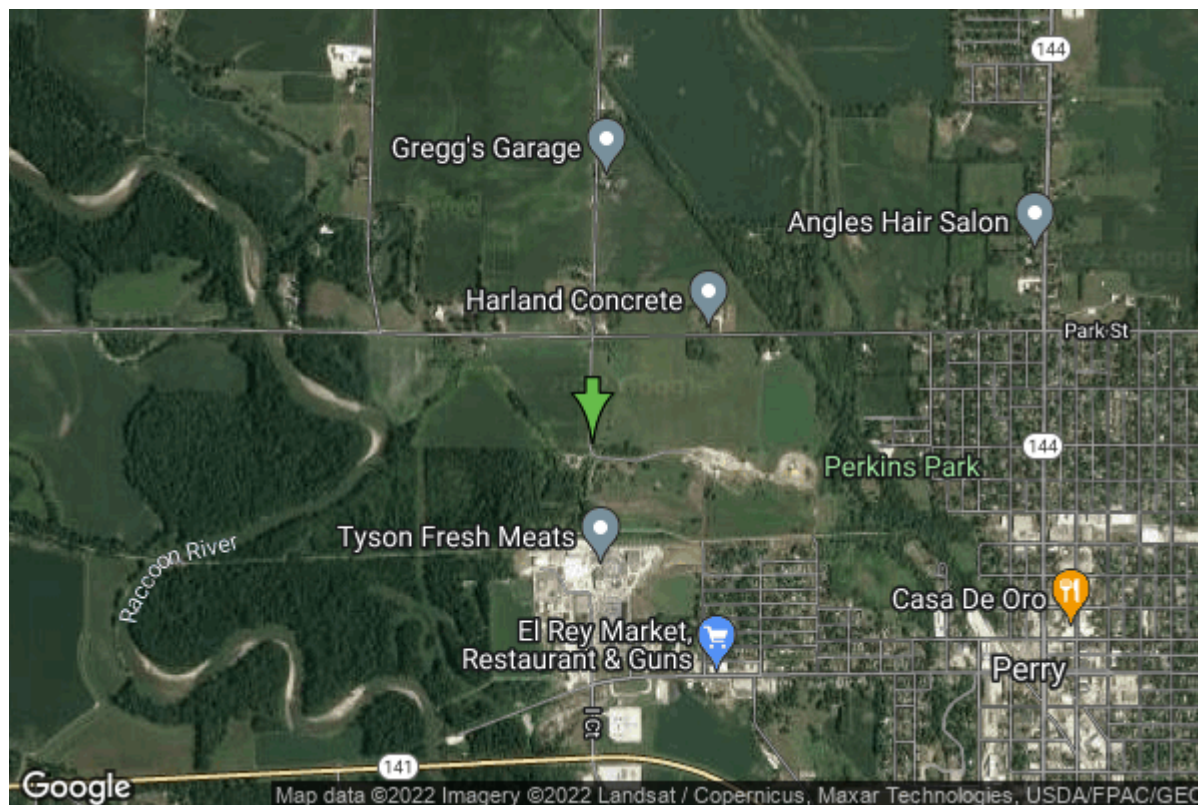


# Well W#27950 Information



<b>Date Received</b>	08/03/1987	<b>State</b>	Iowa
<b>Owner Name</b>	Perry, City Of	<b>County</b>	Dallas
<b>Alt Name</b>	#21	<b>Quadrangle</b>	Perry, Iowa
<b>WNumber</b>	27950	<b>Township</b>	T81N
<b>PWTS ID</b>	0	<b>Range</b>	R28W
<b>PWS ID</b>	2561036	<b>Section</b>	9
<b>Storet ID</b>	0	<b>Quarter</b>	NW NW SW
<b>SDWIS ID</b>	2407834	<b>Latitude</b>	41.8457800000
<b>USGS ID</b>	0	<b>Longitude</b>	-94.1252100000
<b>Project</b>	Source Water Protection	<b>Accuracy</b>	
<b>Operator</b>	Unknown	<b>UTM X</b>	406587
		<b>UTM Y</b>	4633266

<b>Site Type</b>	Drilled hole	<b>Drilling Company</b>	Layne Western - Ia.
<b>Well Status</b>	Active	<b>Drilling Date</b>	01/01/1982
<b>Field Located</b>	No	<b>Drilling Method</b>	Unknown
<b>Elevation</b>	957 ft	<b>Bedrock Depth</b>	0 ft
<b>Elevation Accuracy</b>	Digital Elevation Model Accurate to 5 ft	<b>Well Depth</b>	127 ft
<b>Landscape Position</b>	Unknown	<b>Total Depth</b>	125 ft
		<b>Well Types</b>	Municipal, Public Supply
		<b>Aquifers</b>	Pleistocene

## Casing Construction Information

<b>Date</b>	01/01/1982	<b>Casing Type</b>	Unknown
<b>Start Depth</b>	0.00 ft	<b>End Depth</b>	0.00 ft

<b>Diameter</b>	16.00 in	<b>Amount</b>	114.00 ft
<b>Comments</b>			

## Log Information

<b>Date</b>	
<b>Log Types</b>	Drillers log
<b>Prepared By</b>	Perry, City Of
<b>Comments</b>	

## Chip Storage Information

<b>Date</b>		<b>Bin</b>	
<b>Storage</b>	OD2-247	<b>Number of Samples</b>	25
<b>Number of Boxes</b>	1	<b>Sample Gaps</b>	
<b>Sample Intervals</b>	0	<b>Sample Bottom</b>	125 ft
<b>Sample Top</b>	0 ft	<b>Washed Bottom</b>	0 ft
<b>Washed Top</b>	0 ft		
<b>Duplicate Storage</b>			
<b>Comments</b>			

<https://www.iihr.uiowa.edu/igs/geosam/well/27950/general-information>