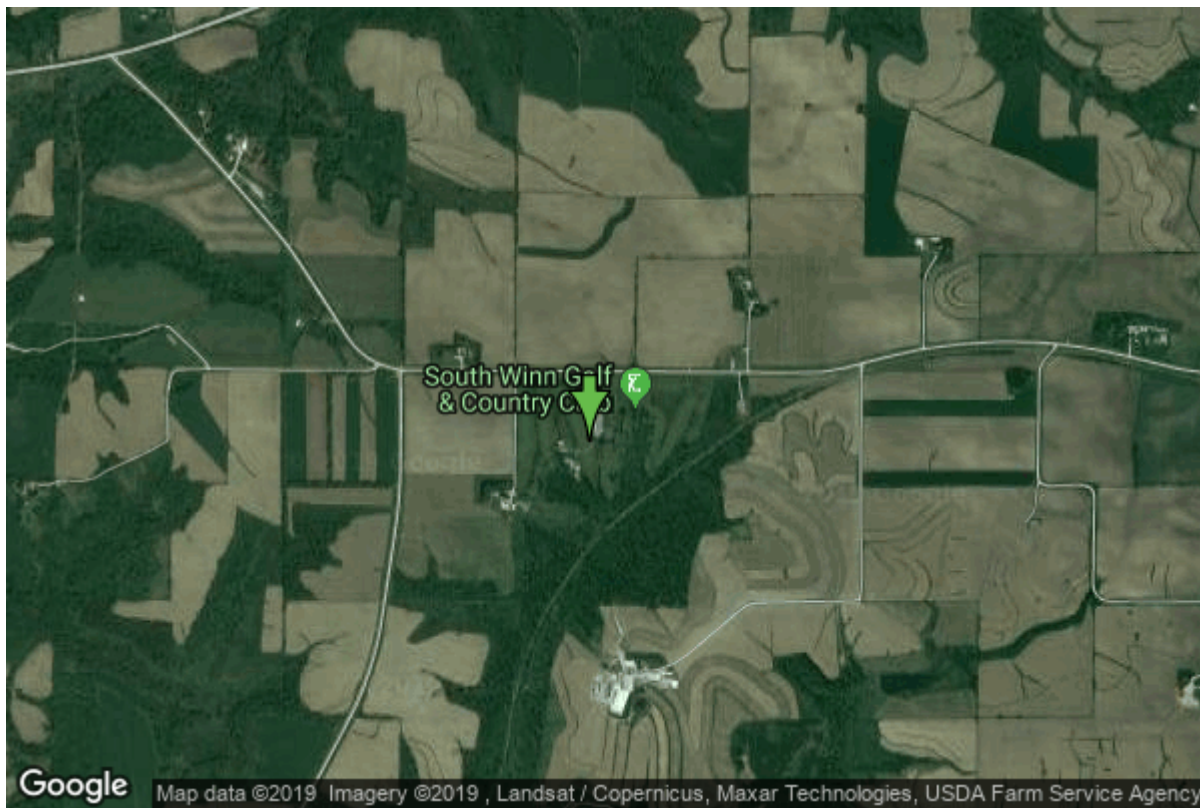


# Well W#28089 Information



<b>Date Received</b>	09/03/1987	<b>State</b>	Iowa
<b>Owner Name</b>	South Winn Golf Club	<b>County</b>	Winneshiek
<b>Alt Name</b>	SOUTH WINN GOLF & COUNTRY CLUB	<b>Quadrangle</b>	Fort Atkinson, Iowa
<b>WNumber</b>	28089	<b>Township</b>	T97N
<b>PWTS ID</b>	0	<b>Range</b>	R9W
<b>PWS ID</b>	9615867	<b>Section</b>	28
<b>Storet ID</b>	0	<b>Quarter</b>	SE NW SE
<b>SDWIS ID</b>	2407203	<b>Latitude</b>	43.1883160000
<b>USGS ID</b>	0	<b>Longitude</b>	-91.9099220000
<b>Project</b>	Source Water Protection	<b>Accuracy</b>	
<b>Operator</b>	Unknown	<b>UTM X</b>	588579
		<b>UTM Y</b>	4782304

---

<b>Site Type</b>	Drilled hole	<b>Drilling Company</b>	Shawver Well Co.
<b>Well Status</b>	Active	<b>Drilling Date</b>	05/31/1987
<b>Field Located</b>	No	<b>Drilling Method</b>	Rotary
<b>Elevation</b>	1222 ft	<b>Bedrock Depth</b>	0 ft
<b>Elevation Accuracy</b>	Digital Elevation Model Accurate to 5 ft	<b>Well Depth</b>	610 ft
<b>Landscape Position</b>	Hillside	<b>Total Depth</b>	610 ft
		<b>Well Types</b>	Public Supply
		<b>Aquifers</b>	Cambrian-Ordovician

## Log Information

<b>Date</b>	
<b>Log Types</b>	Drillers log

**Prepared By**  
**Comments**

Unknown

## Chip Storage Information

<b>Date</b>	02/06/1996		
<b>Storage</b>	OD3-301	<b>Bin</b>	
<b>Number of Boxes</b>	1	<b>Number of Samples</b>	45
<b>Sample Intervals</b>	5	<b>Sample Gaps</b>	0-390
<b>Sample Top</b>	390 ft	<b>Sample Bottom</b>	610 ft
<b>Washed Top</b>	390 ft	<b>Washed Bottom</b>	610 ft
<b>Duplicate Storage</b>			
<b>Comments</b>			

<https://www.iihr.uiowa.edu/igs/geosam/well/28089/general-information>