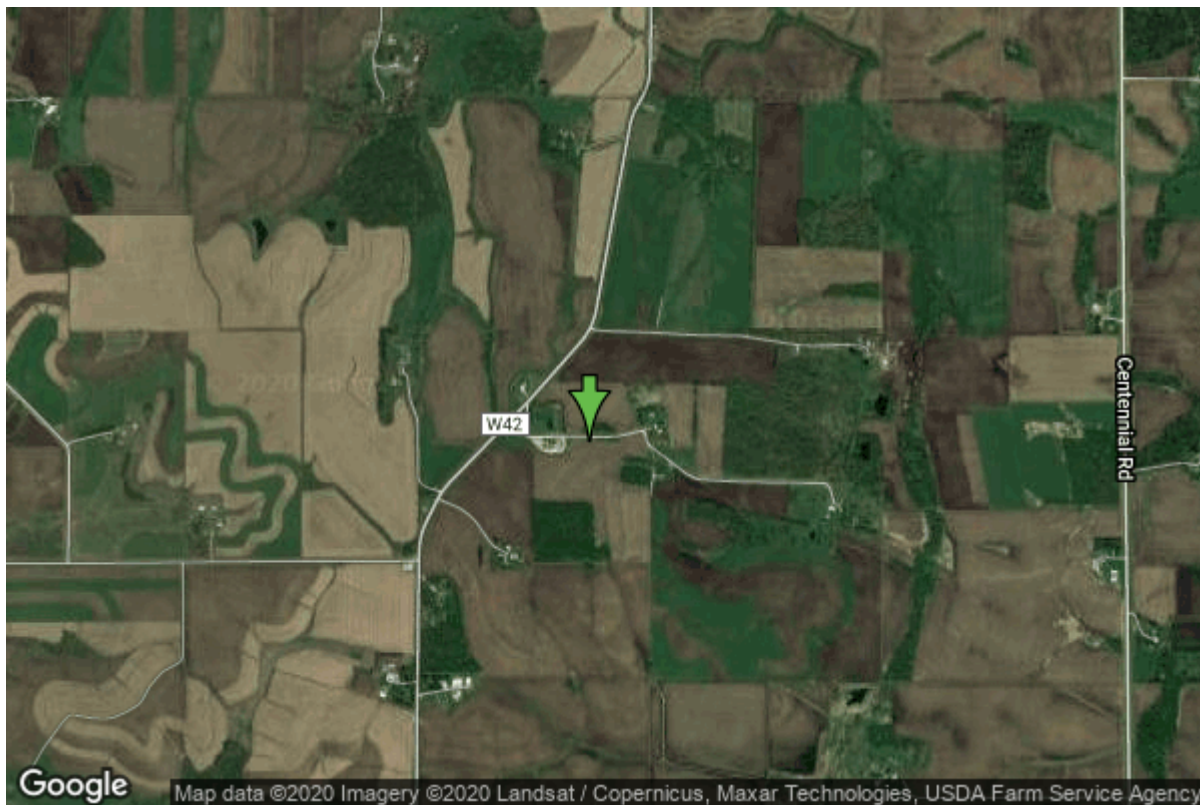


Well W#28115 Information



Date Received	10/12/1987	State	Iowa
Owner Name	Washington Prairie Lutheran	County	Winneshiek
Alt Name	WASH PRAIRIE LUTHERAN CHURCH	Quadrangle	Postville Nw, Iowa
WNumber	28115	Township	T97N
PWTS ID	0	Range	R8W
PWS ID	9630809	Section	12
Storet ID	0	Quarter	NW NE SE
SDWIS ID	2410674	Latitude	43.2379310000
USGS ID	0	Longitude	-91.7357740000
Project	Source Water Protection	Accuracy	
Operator	Unknown	UTM X	602647
		UTM Y	4788013
<hr/>			
Site Type	Drilled hole	Drilling Company	Shawver Well Co.
Well Status	Active	Drilling Date	07/31/1987
Field Located	No	Drilling Method	Rotary
Elevation	1226 ft	Bedrock Depth	50 ft
Elevation Accuracy	Digital Elevation Model Accurate to 5 ft	Well Depth	640 ft
Landscape Position	Upland	Total Depth	640 ft
		Well Types	Public Supply
		Aquifers	Cambrian-Ordovician

Casing Construction Information

Date	07/31/1987	Casing Type	Steel
Start Depth	0.00 ft	End Depth	550.00 ft
Diameter	5.00 in	Amount	0.00 ft
Comments			

Grout Construction Information

Date	07/31/1987	Grout Placement	Unknown
Grout Type	Unknown	End Depth	550.00 ft
Start Depth	0.00 ft		
Comments			

Pump Construction Information

Date	07/31/1987	Pump Type	Unknown
Diameter	0.00 in	Rating	0
Depth Intake	475.00 ft		
Comments			

Log Information

Date	
Log Types	Drillers log
Prepared By	Unknown
Comments	

Date	
Log Types	Strip log
Prepared By	Unknown
Comments	

Stratigraphy Information

System	Quaternary		
Series			
Group			
Formation			
Member			
Submember			
Start Depth	0.00 ft	End Depth	60.00 ft
Contact Accuracy			
Penetration			
Primary Lithology	Till	Percent	0

Secondary Lithology		Percent	
Tertiary Lithology		Percent	
Comments			

System	Ordovician		
Series			
Group			
Formation	Maquoketa		
Member			
Submember			
Start Depth	60.00 ft	End Depth	150.00 ft
Contact Accuracy			
Penetration			
Primary Lithology	Limestone	Percent	0
Secondary Lithology	Shale	Percent	0
Tertiary Lithology		Percent	
Comments			

System	Ordovician		
Series			
Group	Galena		
Formation	Dubuque		
Member			
Submember			
Start Depth	150.00 ft	End Depth	180.00 ft
Contact Accuracy			
Penetration			
Primary Lithology	Limestone	Percent	0
Secondary Lithology	Shale	Percent	0
Tertiary Lithology		Percent	
Comments			

System	Ordovician		
Series			
Group	Galena		
Formation	Wise Lake		
Member			
Submember			
Start Depth	180.00 ft	End Depth	260.00 ft
Contact Accuracy			
Penetration			
Primary Lithology	Limestone	Percent	0
Secondary Lithology		Percent	
Tertiary Lithology		Percent	
Comments			

System	Ordovician		
Series			
Group	Galena		

Formation Member Submember	Dunleith		
Start Depth	260.00 ft	End Depth	380.00 ft
Contact Accuracy Penetration			
Primary Lithology	Limestone	Percent	0
Secondary Lithology	Chert/Chalcedony	Percent	0
Tertiary Lithology		Percent	
Comments			

System Series	Ordovician		
Group	Galena		
Formation Member	Decorah		
Submember			
Start Depth	380.00 ft	End Depth	440.00 ft
Contact Accuracy Penetration			
Primary Lithology	Limestone	Percent	0
Secondary Lithology	Shale	Percent	0
Tertiary Lithology		Percent	
Comments			

System Series	Ordovician		
Group	Galena		
Formation Member	Platteville		
Submember			
Start Depth	440.00 ft	End Depth	460.00 ft
Contact Accuracy Penetration			
Primary Lithology	Limestone	Percent	0
Secondary Lithology	Shale	Percent	0
Tertiary Lithology		Percent	
Comments			

System Series	Ordovician		
Group	Ancell		
Formation Member	St. Peter Sandstone		
Submember			
Start Depth	460.00 ft	End Depth	520.00 ft
Contact Accuracy Penetration			
Primary Lithology	Sandstone	Percent	0

Secondary Lithology	Limestone	Percent	0
Tertiary Lithology	Shale	Percent	0
Comments			

System	Ordovician		
Series			
Group	Prairie Du Chien		
Formation	Shakopee		
Member	Willow River		
Submember			
Start Depth	520.00 ft	End Depth	590.00 ft
Contact Accuracy			
Penetration			
Primary Lithology	Dolomite	Percent	0
Secondary Lithology	Chert/Chalcedony	Percent	0
Tertiary Lithology		Percent	
Comments			

System	Ordovician		
Series			
Group	Prairie Du Chien		
Formation	Shakopee		
Member	New Richmond		
Submember			
Start Depth	590.00 ft	End Depth	625.00 ft
Contact Accuracy			
Penetration			
Primary Lithology	Dolomite	Percent	0
Secondary Lithology	Sandstone	Percent	0
Tertiary Lithology	Chert/Chalcedony	Percent	0
Comments			

System	Ordovician		
Series			
Group	Prairie Du Chien		
Formation	Oneota		
Member			
Submember			
Start Depth	625.00 ft	End Depth	640.00 ft
Contact Accuracy			
Penetration			
Primary Lithology	Dolomite	Percent	0
Secondary Lithology		Percent	
Tertiary Lithology		Percent	
Comments			

Water Production Information

Date	07/31/1987	Start Time	
Aquifer	Unknown		
Static Water Level	366.00 ft	Yield	15 gallons per minute
Pumping Water Level	0 ft	Yield Method	Unknown
Measurement	Unknown	Pump Test	No
Pump Method	Unknown	Duration	0 mins
Comments			

Chip Storage Information

Date	10/01/1990		
Storage	OD2-617,618	Bin	
Number of Boxes	2	Number of Samples	116
Sample Intervals	5	Sample Gaps	
Sample Top	0 ft	Sample Bottom	640 ft
Washed Top	60 ft	Washed Bottom	640 ft
Duplicate Storage			
Comments			

<https://www.iuhr.uiowa.edu/igs/geosam/well/28115/general-information>