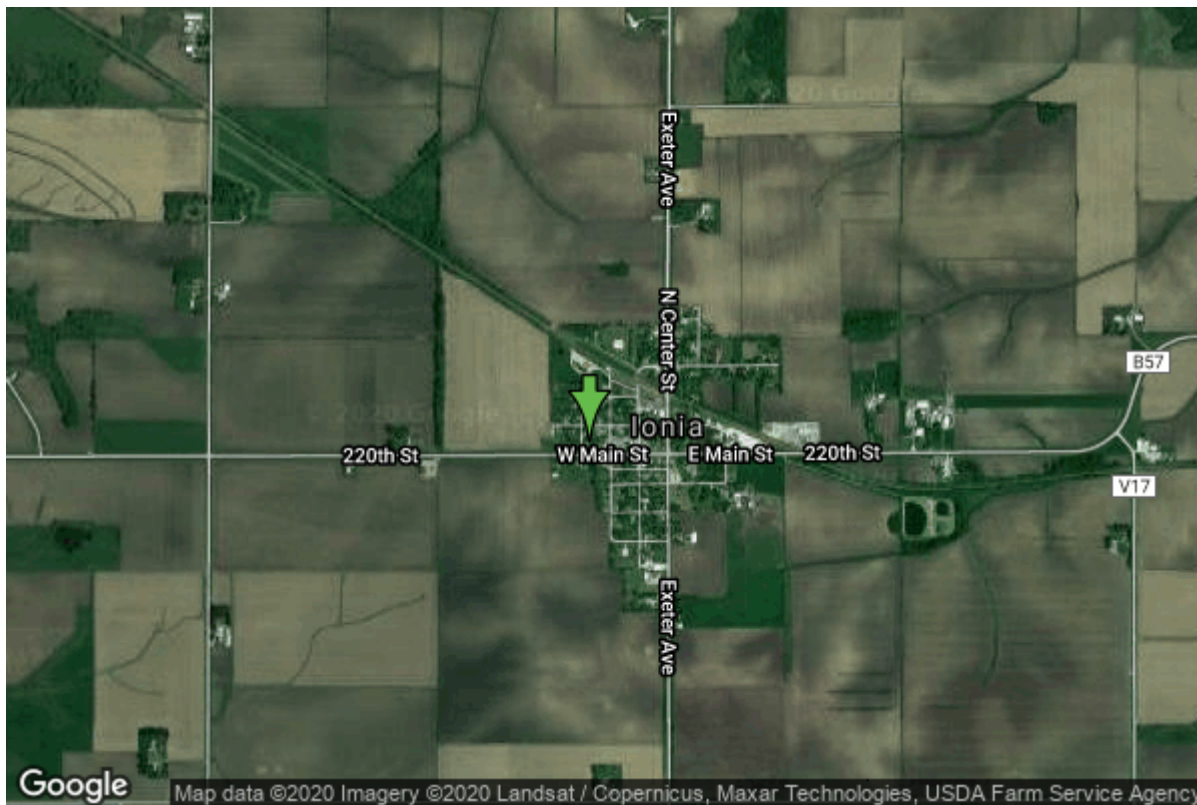


# Well W#28342 Information



<b>Date Received</b>		<b>State</b>	Iowa
<b>Owner Name</b>	Ionia, City Of	<b>County</b>	Chickasaw
<b>Alt Name</b>	#2	<b>Quadrangle</b>	Ionia, Iowa
<b>WNumber</b>	28342	<b>Township</b>	T95N
<b>PWTS ID</b>	0	<b>Range</b>	R14W
<b>PWS ID</b>	1946078	<b>Section</b>	23
<b>Storet ID</b>	0	<b>Quarter</b>	NE NE SW
<b>SDWIS ID</b>	2410547	<b>Latitude</b>	43.03444400000
<b>USGS ID</b>	0	<b>Longitude</b>	-92.4586480000
<b>Project</b>	Source Water Protection	<b>Accuracy</b>	
<b>Operator</b>	Unknown	<b>UTM X</b>	544100
		<b>UTM Y</b>	4764781

<b>Site Type</b>	Drilled hole	<b>Drilling Company</b>	Shawver Well Co.
<b>Well Status</b>	Active	<b>Drilling Date</b>	02/10/1983
<b>Field Located</b>	No	<b>Drilling Method</b>	Unknown
<b>Elevation</b>	1155 ft	<b>Bedrock Depth</b>	172 ft
<b>Elevation Accuracy</b>	Topo Map Accurate to 2 ft	<b>Well Depth</b>	252 ft
<b>Landscape Position</b>	Upland	<b>Total Depth</b>	252 ft
		<b>Well Types</b>	Municipal, Public Supply
		<b>Aquifers</b>	Devonian

## Casing Construction Information

<b>Date</b>	05/12/1983	<b>Casing Type</b>	Unknown
<b>Start Depth</b>	3.00 ft	<b>End Depth</b>	188.00 ft

<b>Diameter</b>	10.00 in	<b>Amount</b>	185.00 ft
<b>Comments</b>			

## Log Information

<b>Date</b>	05/05/2010
<b>Log Types</b>	Strip log
<b>Prepared By</b>	Bouck, Michael Joseph
<b>Comments</b>	

---

<b>Date</b>	05/12/1983
<b>Log Types</b>	Drillers log
<b>Prepared By</b>	Layne Western - la.
<b>Comments</b>	

## Formation Information

<b>Formation Color</b>	No Color Noted	<b>Formation Lithology</b>	soil or fill
<b>Start Depth</b>	0.00 ft	<b>End Depth</b>	1.00 ft
<b>Comments</b>			

---

<b>Formation Color</b>	No Color Noted	<b>Formation Lithology</b>	soil or fill
<b>Start Depth</b>	1.00 ft	<b>End Depth</b>	7.00 ft
<b>Comments</b>			

---

<b>Formation Color</b>	No Color Noted	<b>Formation Lithology</b>	clay
<b>Start Depth</b>	7.00 ft	<b>End Depth</b>	10.00 ft
<b>Comments</b>			

---

<b>Formation Color</b>	Blue	<b>Formation Lithology</b>	sand
<b>Start Depth</b>	10.00 ft	<b>End Depth</b>	20.00 ft
<b>Comments</b>			

---

<b>Formation Color</b>	Blue	<b>Formation Lithology</b>	sand and gravel
<b>Start Depth</b>	20.00 ft	<b>End Depth</b>	40.00 ft
<b>Comments</b>			

---

<b>Formation Color</b>	Blue	<b>Formation Lithology</b>	sand and gravel
<b>Start Depth</b>	40.00 ft	<b>End Depth</b>	70.00 ft
<b>Comments</b>			

---

<b>Formation Color</b>	Buff	<b>Formation Lithology</b>	sand
<b>Start Depth</b>	70.00 ft	<b>End Depth</b>	95.00 ft
<b>Comments</b>			

---

<b>Formation Color</b>	No Color Noted	<b>Formation Lithology</b>	sandstone
------------------------	----------------	----------------------------	-----------

<b>Start Depth</b>	95.00 ft	<b>End Depth</b>	114.00 ft
--------------------	----------	------------------	-----------

**Comments**

---

<b>Formation Color</b>	White	<b>Formation Lithology</b>	shale
<b>Start Depth</b>	114.00 ft	<b>End Depth</b>	120.00 ft

**Comments**

## Stratigraphy Information

<b>System</b>	Quaternary		
<b>Series</b>	Pleistocene Series		
<b>Group</b>			
<b>Formation</b>			
<b>Member</b>			
<b>Submember</b>			
<b>Start Depth</b>	0.00 ft	<b>End Depth</b>	172.00 ft
<b>Contact Accuracy</b>			
<b>Penetration</b>			
<b>Primary Lithology</b>	Till - Oxidized And Unleached	<b>Percent</b>	75
<b>Secondary Lithology</b>	Sand And Gravel	<b>Percent</b>	15
<b>Tertiary Lithology</b>	Till - Unoxidized And Unleached	<b>Percent</b>	10
<b>Comments</b>			

---

<b>System</b>	Devonian		
<b>Series</b>			
<b>Group</b>	Cedar Valley		
<b>Formation</b>			
<b>Member</b>			
<b>Submember</b>			
<b>Start Depth</b>	172.00 ft	<b>End Depth</b>	252.00 ft
<b>Contact Accuracy</b>			
<b>Penetration</b>			
<b>Primary Lithology</b>	Dolomite	<b>Percent</b>	85
<b>Secondary Lithology</b>	Sandstone	<b>Percent</b>	13
<b>Tertiary Lithology</b>	Chert/Chalcedony	<b>Percent</b>	2
<b>Comments</b>			

## Water Production Information

<b>Date</b>	05/12/1983	<b>Start Time</b>	
<b>Aquifer</b>	Unknown		
<b>Static Water Level</b>	118.00 ft	<b>Yield</b>	202 gallons per minute
<b>Pumping Water Level</b>	129 ft	<b>Yield Method</b>	Unknown
<b>Measurement</b>	Unknown	<b>Pump Test</b>	No
<b>Pump Method</b>	Unknown	<b>Duration</b>	0 mins

## Comments

# Chip Storage Information

<b>Date</b>	11/18/1988	<b>Bin</b>	
<b>Storage</b>	OD2-380	<b>Number of Samples</b>	50
<b>Number of Boxes</b>	1	<b>Sample Gaps</b>	230-235'
<b>Sample Intervals</b>	0	<b>Sample Bottom</b>	252 ft
<b>Sample Top</b>	0 ft	<b>Washed Bottom</b>	252 ft
<b>Washed Top</b>	170 ft		
<b>Duplicate Storage</b>			
<b>Comments</b>			

<https://www.ihr.uiowa.edu/igs/geosam/well/28342/general-information>