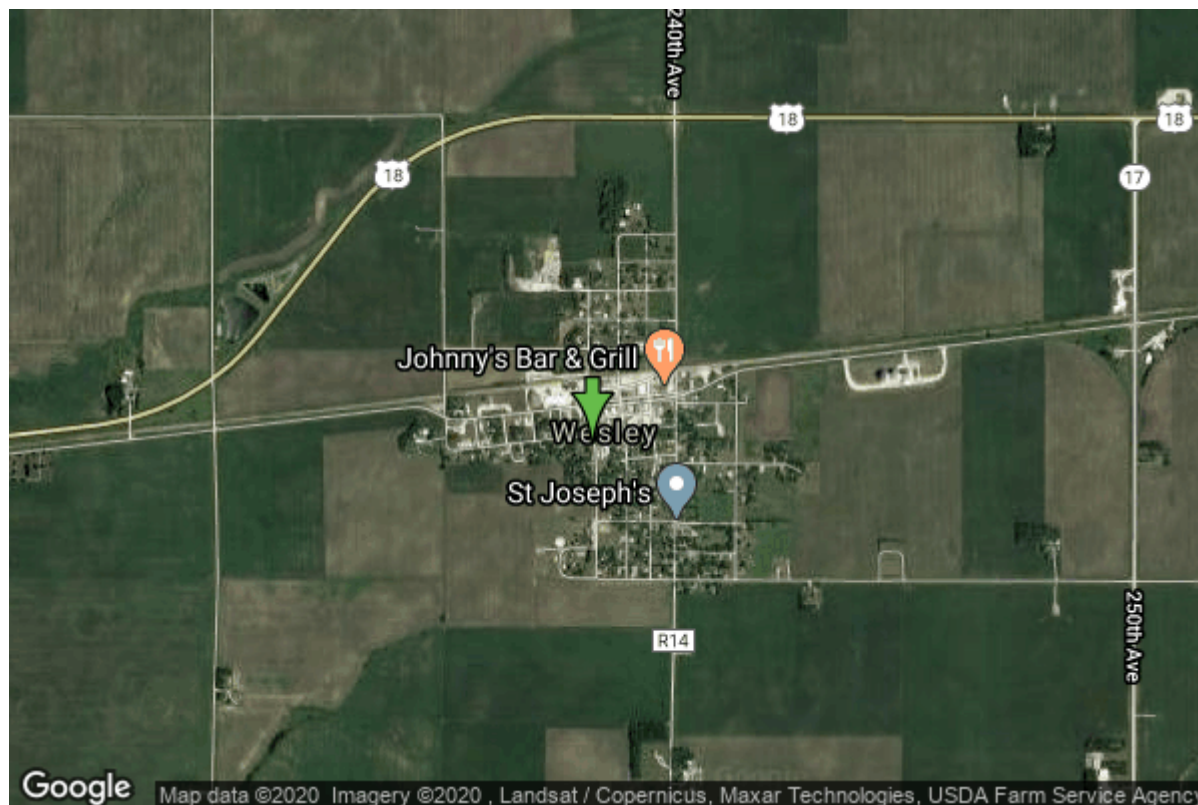


Well W#28725 Information



Date Received		State	Iowa
Owner Name	Wesley, City Of	County	Kossuth
Alt Name	#3	Quadrangle	Wesley, Iowa
WNumber	28725	Township	T96N
PWTS ID	0	Range	R27W
PWS ID	5592098	Section	35
Storet ID	0	Quarter	SE NE SW SE NE
SDWIS ID	2407715	Latitude	43.0868870000
USGS ID	0	Longitude	-93.9929640000
Project	Source Water Protection	Accuracy	
Operator	Unknown	UTM X	419179
		UTM Y	4770942

Site Type	Drilled hole	Drilling Company	Schumacher Well Co.
Well Status	Active	Drilling Date	12/15/1983
Field Located	No	Drilling Method	Unknown
Elevation	1250 ft	Bedrock Depth	200 ft
Elevation Accuracy	Digital Elevation Model Accurate to 5 ft	Well Depth	435 ft
Landscape Position	Unknown	Total Depth	418 ft
		Well Types	Municipal, Public Supply
		Aquifers	Devonian

Log Information

Date	12/04/2014
Log Types	Strip log

Prepared By Clark, Ryan
Comments

Date
Log Types Drillers log
Prepared By Wesley, City Of
Comments

Stratigraphy Information

System Quaternary
Series
Group
Formation
Member
Submember
Start Depth 0.00 ft **End Depth** 200.00 ft
Contact Accuracy
Penetration
Primary Lithology Till **Percent** 60
Secondary Lithology Sand And Gravel **Percent** 40
Tertiary Lithology
Comments

System Devonian
Series
Group Cedar Valley
Formation
Member
Submember
Start Depth 200.00 ft **End Depth** 418.00 ft
Contact Accuracy
Penetration
Primary Lithology Dolomite **Percent** 70
Secondary Lithology Limestone **Percent** 30
Tertiary Lithology
Comments

Chip Storage Information

Date
Storage OD2-305 **Bin**
Number of Boxes 1 **Number of Samples** 42
Sample Intervals 0 **Sample Gaps**
Sample Top 0 ft **Sample Bottom** 418 ft
Washed Top 170 ft **Washed Bottom** 418 ft
Duplicate Storage

Comments

<https://www.ihr.uiowa.edu/igs/geosam/well/28725/general-information>