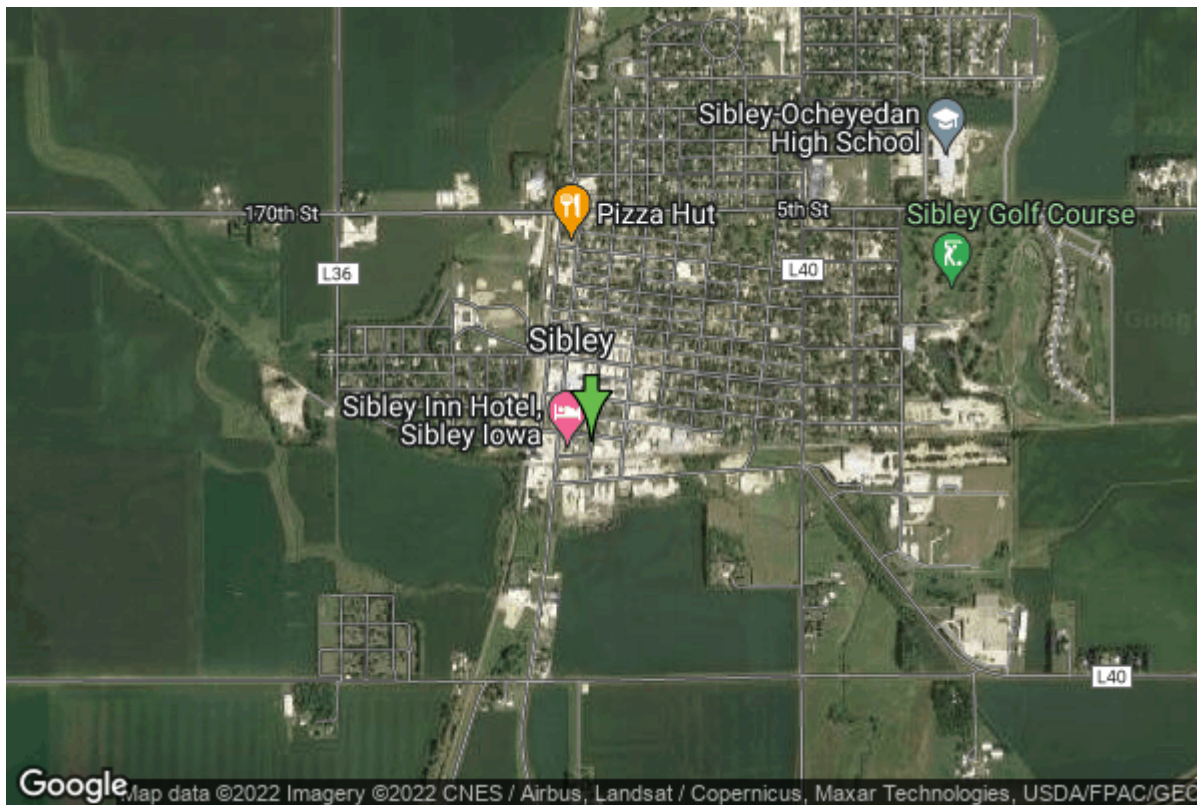


Well W#289 Information



Date Received		State	Iowa
Owner Name	Sibley, City Of	County	Osceola
Alt Name	#1	Quadrangle	Sibley East, Iowa
WNumber	289	Township	T99N
PWTS ID	0	Range	R42W
PWS ID	7245047	Section	13
Storet ID	0	Quarter	NE SW SW
SDWIS ID	2408278	Latitude	43.3968200000
USGS ID	0	Longitude	-95.7501400000
Project	Source Water Protection	Accuracy	
Operator	Unknown	UTM X	277284
		UTM Y	4808556

Site Type	Drilled hole	Drilling Company	Thorpe Well Co.
Well Status	Not Used	Drilling Date	01/01/1934
Field Located	No	Drilling Method	Unknown
Elevation	1507 ft	Bedrock Depth	408 ft
Elevation Accuracy	Digital Elevation Model Accurate to 5 ft	Well Depth	712 ft
Landscape Position	Unknown	Total Depth	712 ft
		Well Types	Municipal, Public Supply
		Aquifers	Dakota/Cretaceous

Casing Construction Information

Date	01/01/1934	Casing Type	Steel
Start Depth	0.00 ft	End Depth	543.00 ft

Diameter	16.00 in	Amount	543.00 ft
-----------------	----------	---------------	-----------

Date	01/01/1934	Casing Type	Steel
Start Depth	543.00 ft	End Depth	612.00 ft
Diameter	14.00 in	Amount	0.00 ft

Date	01/01/1934	Casing Type	Steel
Start Depth	510.00 ft	End Depth	610.00 ft
Diameter	8.00 in	Amount	0.00 ft

Screen Construction Information

Date	01/01/1934		
Screen Type	Steel	Slot Size	0.13
Start Depth	610.00 ft	End Depth	690.00 ft
Diameter	10.00 in	Amount	80 ft

Date	01/01/1934		
Screen Type	Steel	Slot Size	0.00
Start Depth	0.00 ft	End Depth	0.00 ft
Diameter	0.00 in	Amount	0 ft

Log Information

Date	
Log Types	Strip log
Prepared By	Unknown

Stratigraphy Information

System	Quaternary		
Series	Holocene Series		
Group			
Formation	Deforest		
Member			
Submember			
Start Depth	0.00 ft	End Depth	5.00 ft
Contact Accuracy			
Penetration			
Primary Lithology	Soil Or Fill	Percent	100

Secondary Lithology		Percent	
Tertiary Lithology		Percent	
Comments			
System	Quaternary		
Series	Pleistocene Series		
Group	Pre-Illinoian		
Formation			
Member			
Submember			
Start Depth	5.00 ft	End Depth	240.00 ft
Contact Accuracy			
Penetration			
Primary Lithology	Till	Percent	100
Secondary Lithology		Percent	
Tertiary Lithology		Percent	
Comments			
System	Quaternary		
Series	Pleistocene Series		
Group	Pre-Illinoian		
Formation			
Member			
Submember			
Start Depth	240.00 ft	End Depth	371.00 ft
Contact Accuracy			
Penetration			
Primary Lithology	Till	Percent	100
Secondary Lithology		Percent	
Tertiary Lithology		Percent	
Comments			
System	Quaternary		
Series	Pleistocene Series		
Group	Pre-Illinoian		
Formation			
Member			
Submember			
Start Depth	371.00 ft	End Depth	387.00 ft
Contact Accuracy			
Penetration			
Primary Lithology	Sandstone	Percent	100
Secondary Lithology		Percent	
Tertiary Lithology		Percent	
Comments			
System	Quaternary		
Series	Pleistocene Series		
Group	Pre-Illinoian		

Formation Member Submember			
Start Depth	387.00 ft	End Depth	391.00 ft
Contact Accuracy Penetration			
Primary Lithology	Sandstone	Percent	100
Secondary Lithology		Percent	
Tertiary Lithology		Percent	
Comments			
<hr/>			
System Series Group	Quaternary Pleistocene Series Pre-Illinoian		
Formation Member Submember			
Start Depth	391.00 ft	End Depth	400.00 ft
Contact Accuracy Penetration			
Primary Lithology	Sandstone	Percent	100
Secondary Lithology		Percent	
Tertiary Lithology		Percent	
Comments			
<hr/>			
System Series Group	Quaternary Pleistocene Series Pre-Illinoian		
Formation Member Submember			
Start Depth	400.00 ft	End Depth	406.00 ft
Contact Accuracy Penetration			
Primary Lithology	Shale	Percent	100
Secondary Lithology		Percent	
Tertiary Lithology		Percent	
Comments			
<hr/>			
System Series Group	Quaternary Pleistocene Series Pre-Illinoian		
Formation Member Submember			
Start Depth	406.00 ft	End Depth	408.00 ft
Contact Accuracy Penetration			
Primary Lithology	Sandstone	Percent	100

Secondary Lithology		Percent	
Tertiary Lithology		Percent	
Comments			
System	Cretaceous		
Series			
Group	Fort Benton ("Lower Colorado ")		
Formation	Dakota		
Member	Woodbury		
Submember			
Start Depth	408.00 ft	End Depth	560.00 ft
Contact Accuracy			
Penetration			
Primary Lithology	Sandstone	Percent	0
Secondary Lithology	Shale	Percent	0
Tertiary Lithology		Percent	
Comments			

System	Cretaceous		
Series			
Group	Fort Benton ("Lower Colorado ")		
Formation	Dakota		
Member	Nishnabotna		
Submember			
Start Depth	560.00 ft	End Depth	712.00 ft
Contact Accuracy			
Penetration			
Primary Lithology	Sandstone	Percent	100
Secondary Lithology	Unknown	Percent	0
Tertiary Lithology	Unknown	Percent	0
Comments			

Water Production Information

Date	11/11/1938	Start Time	
Aquifer	Unknown		
Static Water Level	286.00 ft	Yield	240 gallons per minute
Pumping Water Level	0 ft	Yield Method	Unknown
Measurement	Unknown	Pump Test	Yes
Pump Method	Unknown	Duration	0 mins
Comments			

Chip Storage Information

Date		Bin	
Storage	WC2-3	Number of Samples	1
Number of Boxes	1		

Sample Intervals	0	Sample Gaps	0-612,690-712
Sample Top	612 ft	Sample Bottom	690 ft
Washed Top	0 ft	Washed Bottom	0 ft
Duplicate Storage			
Comments			

<https://www.ihr.uiowa.edu/igs/geosam/well/289/general-information>