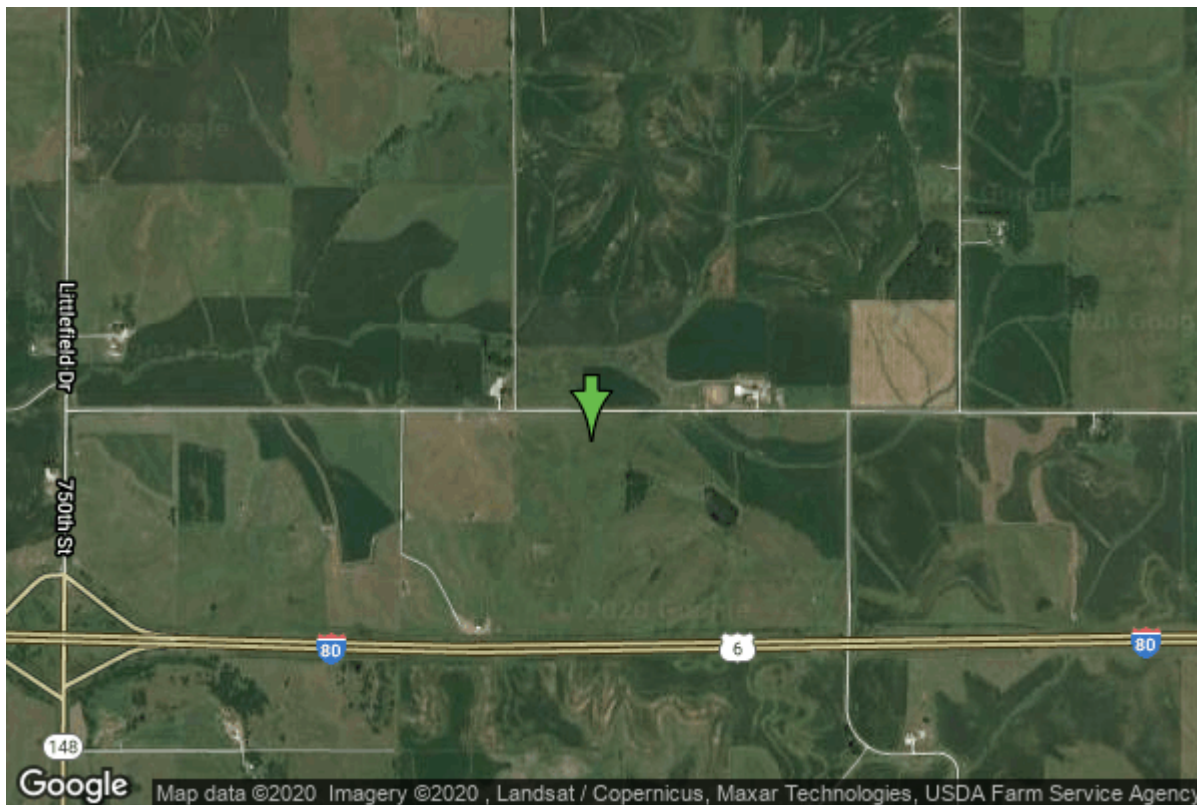


Well W#29273 Information



Date Received	10/02/1988	State	Iowa
Owner Name	Adair, City Of	County	Cass
Alt Name	#5	Quadrangle	Adair North, Iowa
WNumber	29273	Township	T77N
PWTS ID	0	Range	R34W
PWS ID	105002	Section	2
Storet ID	0	Quarter	NW NW NE
SDWIS ID	2407922	Latitude	41.5032170000
USGS ID	0	Longitude	-94.7349190000
Project	Source Water Protection	Accuracy	
Operator	Unknown	UTM X	355203
		UTM Y	4596074

Site Type	Drilled hole	Drilling Company	Winslow Well Co.
Well Status	Active	Drilling Date	08/31/1988
Field Located	No	Drilling Method	Rotary
Elevation	1417 ft	Bedrock Depth	174 ft
Elevation Accuracy	Digital Elevation Model Accurate to 5 ft	Well Depth	265 ft
Landscape Position	Hillside	Total Depth	265 ft
		Well Types	Municipal, Public Supply
		Aquifers	Dakota/Cretaceous

Log Information

Date	07/18/2002
Log Types	Strip log

Prepared By Phillips, P. Lee
Comments

Date
Log Types Drillers log
Prepared By Unknown
Comments

Stratigraphy Information

System Quaternary
Series
Group
Formation
Member
Submember
Start Depth 0.00 ft **End Depth** 5.00 ft
Contact Accuracy
Penetration
Primary Lithology **Percent**
Secondary Lithology **Percent**
Tertiary Lithology **Percent**
Comments

System Quaternary
Series Pleistocene Series
Group Pre-Illinoian
Formation
Member
Submember
Start Depth 5.00 ft **End Depth** 20.00 ft
Contact Accuracy
Penetration
Primary Lithology Till - Oxidized And **Percent** 100
Unleached
Secondary Lithology Unknown **Percent** 0
Tertiary Lithology Unknown **Percent** 0
Comments

System Quaternary
Series Pleistocene Series
Group Pre-Illinoian
Formation
Member
Submember
Start Depth 20.00 ft **End Depth** 135.00 ft
Contact Accuracy
Penetration

Primary Lithology	Till - Unoxidized And Unleached	Percent	100
Secondary Lithology		Percent	
Tertiary Lithology		Percent	
Comments			

System	Quaternary		
Series	Pleistocene Series		
Group	Pre-Illinoian		
Formation			
Member			
Submember			
Start Depth	135.00 ft	End Depth	170.00 ft
Contact Accuracy			
Penetration			
Primary Lithology	Till - Oxidized And Unleached	Percent	100
Secondary Lithology		Percent	
Tertiary Lithology		Percent	
Comments			

System	Cretaceous		
Series			
Group	Fort Benton ("Lower Colorado ")		
Formation	Dakota		
Member			
Submember			
Start Depth	170.00 ft	End Depth	265.00 ft
Contact Accuracy			
Penetration			
Primary Lithology	Sandstone	Percent	0
Secondary Lithology	Shale	Percent	0
Tertiary Lithology	Siltstone	Percent	0
Comments			

Chip Storage Information

Date	10/06/1988		
Storage	OD2-377	Bin	
Number of Boxes	1	Number of Samples	48
Sample Intervals	0	Sample Gaps	0-5, 145-150, 235-240, 245-255'
Sample Top	5 ft	Sample Bottom	265 ft
Washed Top	175 ft	Washed Bottom	265 ft
Duplicate Storage			
Comments			