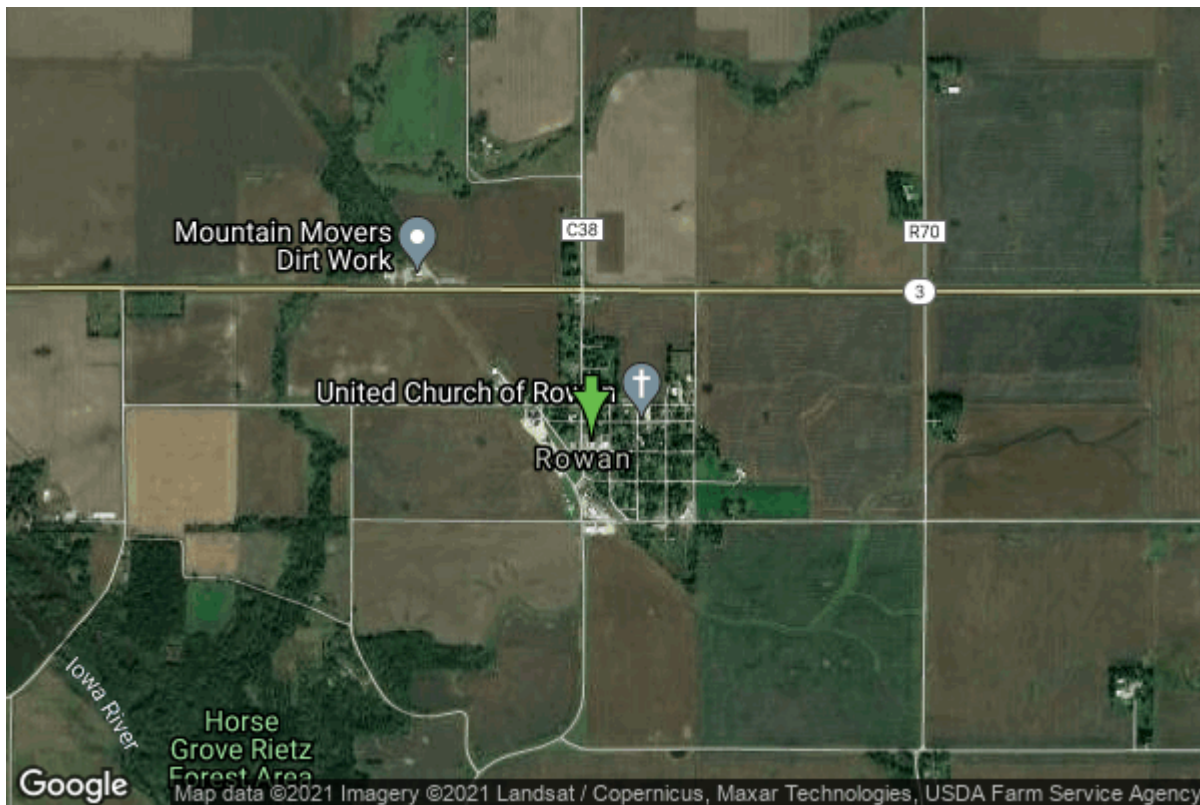


Well W#2929 Information



Date Received		State	Iowa
Owner Name	Rowan, City Of	County	Wright
Alt Name	#1	Quadrangle	Dows West, Iowa
WNumber	2929	Township	T92N
PWTS ID	0	Range	R23W
PWS ID	9958004	Section	34
Storet ID	0	Quarter	NW SE NW
SDWIS ID	2411749	Latitude	42.7410200000
USGS ID	0	Longitude	-93.5516600000
Project Operator	Source Water Protection Unknown	Accuracy	
		UTM X	454847
		UTM Y	4732204

Site Type	Drilled hole	Drilling Company	Layne Western - Ia.
Well Status	Active	Drilling Date	07/26/1947
Field Located	No	Drilling Method	Unknown
Elevation	1210 ft	Bedrock Depth	0 ft
Elevation Accuracy	Digital Elevation Model Accurate to 5 ft	Well Depth	225 ft
Landscape Position	Unknown	Total Depth	225 ft
		Well Types	Municipal, Public Supply
		Aquifers	Devonian, Mississippian

Casing Construction Information

Date	06/26/1947	Casing Type	Steel
Start Depth	0.30 ft	End Depth	10.00 ft

Diameter	18.00 in	Amount	9.70 ft
Comments			

Date	06/26/1947	Casing Type	Steel
Start Depth	-0.30 ft	End Depth	104.00 ft
Diameter	8.00 in	Amount	104.30 ft
Comments			

Log Information

Date	08/14/1947
Log Types	Strip log
Prepared By	Unknown
Comments	

Date	
Log Types	Drillers log
Prepared By	Rowan, City Of
Comments	

Stratigraphy Information

System	Quaternary		
Series	Pleistocene Series		
Group			
Formation			
Member			
Submember			
Start Depth	0.00 ft	End Depth	102.00 ft
Contact Accuracy			
Penetration			
Primary Lithology	Till	Percent	0
Secondary Lithology	Sand And Gravel	Percent	0
Tertiary Lithology		Percent	
Comments			

System	Mississippian (Subsystem Of Carboniferous System)		
Series			
Group	Sub-Augusta		
Formation	Maynes Creek		
Member			
Submember			
Start Depth	102.00 ft	End Depth	195.00 ft
Contact Accuracy			
Penetration			
Primary Lithology	Dolomite	Percent	0
Secondary Lithology	Chert/Chalcedony	Percent	0

Tertiary Lithology Comments	Percent		
System	Mississippian (Subsystem Of Carboniferous System)		
Series			
Group	North Hill		
Formation	Prospect Hill		
Member			
Submember			
Start Depth	195.00 ft	End Depth	215.00 ft
Contact Accuracy			
Penetration			
Primary Lithology	Dolomite	Percent	0
Secondary Lithology	Siltstone	Percent	0
Tertiary Lithology	Shale	Percent	0
Comments			

System	Devonian		
Series			
Group	Yellow Spring (New Albany)		
Formation	Aplington		
Member			
Submember			
Start Depth	215.00 ft	End Depth	225.00 ft
Contact Accuracy			
Penetration			
Primary Lithology	Dolomite	Percent	0
Secondary Lithology	Chert/Chalcedony	Percent	0
Tertiary Lithology		Percent	
Comments			

Water Production Information

Date	06/26/1947	Start Time	
Aquifer	Unknown		
Static Water Level	24.00 ft	Yield	110 gallons per minute
Pumping Water Level	70 ft	Yield Method	Unknown
Measurement	Unknown	Pump Test	No
Pump Method	Unknown	Duration	0 mins
Comments			

Chip Storage Information

Date		Bin	
Storage	CB6-9	Number of Samples	45
Number of Boxes	1	Sample Gaps	
Sample Intervals	5		

Sample Top	0 ft	Sample Bottom	225 ft
Washed Top	35 ft	Washed Bottom	225 ft
Duplicate Storage			
Comments			

<https://www.iihr.uiowa.edu/igs/geosam/well/2929/general-information>