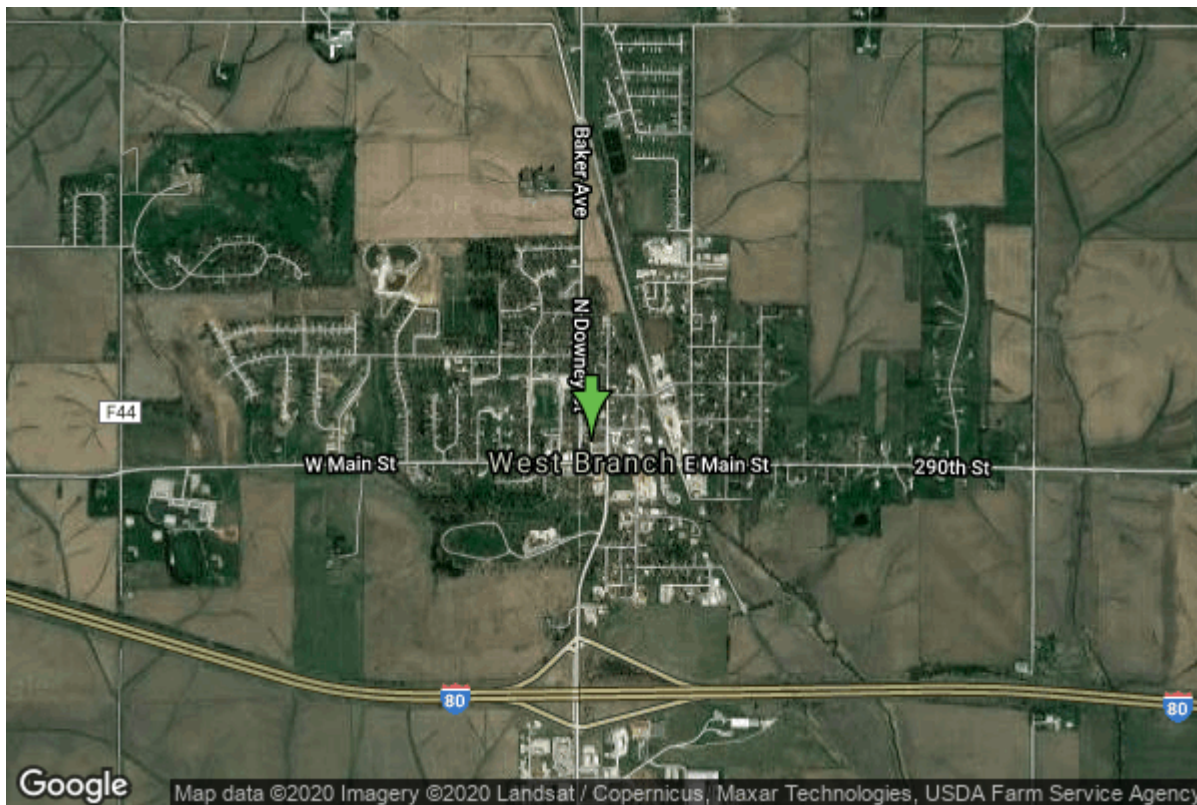


Well W#296 Information



Date Received		State	Iowa
Owner Name	West Branch, City Of	County	Cedar
Alt Name		Quadrangle	West Branch, Iowa
WNumber	296	Township	T79N
PWTS ID	0	Range	R4W
PWS ID	1694000	Section	5
Storet ID	0	Quarter	SW SW SW
SDWIS ID	2574545	Latitude	41.6720500000
USGS ID	0	Longitude	-91.3454450000
Project	Source Water Protection	Accuracy	
Operator	Unknown	UTM X	637730
		UTM Y	4614688

Site Type	Drilled hole	Drilling Company	Unknown
Well Status	Not Used	Drilling Date	04/15/1934
Field Located	No	Drilling Method	Unknown
Elevation	716 ft	Bedrock Depth	50 ft
Elevation Accuracy	Digital Elevation Model Accurate to 5 ft	Well Depth	207 ft
Landscape Position	Unknown	Total Depth	207 ft
		Well Types	Municipal, Public Supply
		Aquifers	Silurian

Casing Construction Information

Date	04/15/1934	Casing Type	Steel
Start Depth	0.00 ft	End Depth	0.00 ft

Diameter	8.00 in	Amount	64.00 ft
-----------------	---------	---------------	----------

Date	04/15/1934	Casing Type	Steel
Start Depth	61.00 ft	End Depth	83.00 ft
Diameter	6.00 in	Amount	22.00 ft

Comments

Log Information

Date	
Log Types	Drillers log
Prepared By	West Branch, City Of

Comments

Date	
Log Types	Strip log
Prepared By	Unknown

Comments

Stratigraphy Information

System	Quaternary		
Series	Pleistocene Series		
Group			
Formation			
Member			
Submember			
Start Depth	0.00 ft	End Depth	50.00 ft
Contact Accuracy			
Penetration			
Primary Lithology	Till	Percent	100
Secondary Lithology		Percent	
Tertiary Lithology		Percent	

Comments

System	Devonian		
Series			
Group	Wapsipinicon		
Formation	Pinicon Ridge		
Member	Spring Grove		
Submember			
Start Depth	50.00 ft	End Depth	65.00 ft
Contact Accuracy			
Penetration			
Primary Lithology	Dolomite	Percent	0
Secondary Lithology	Chert/Chalcedony	Percent	0

Tertiary Lithology		Percent	
Comments			
System	Devonian		
Series			
Group	Wapsipinicon		
Formation	Pinicon Ridge		
Member	Kenwood		
Submember			
Start Depth	65.00 ft	End Depth	75.00 ft
Contact Accuracy			
Penetration			
Primary Lithology	Dolomite	Percent	0
Secondary Lithology	Shale	Percent	0
Tertiary Lithology	Chert/Chalcedony	Percent	0
Comments			

System	Silurian		
Series			
Group			
Formation			
Member			
Submember			
Start Depth	75.00 ft	End Depth	207.00 ft
Contact Accuracy			
Penetration			
Primary Lithology	Dolomite	Percent	0
Secondary Lithology	Shale	Percent	0
Tertiary Lithology	Sandstone	Percent	0
Comments			

Water Production Information

Date	04/15/1934	Start Time	
Aquifer	Unknown		
Static Water Level	9.00 ft	Yield	150 gallons per minute
Pumping Water Level	23 ft	Yield Method	Unknown
Measurement	Unknown	Pump Test	No
Pump Method	Unknown	Duration	0 mins
Comments	Formal pump test on file		

Chip Storage Information

Date			
Storage	WC2-5,6	Bin	
Number of Boxes	2	Number of Samples	55
Sample Intervals	0	Sample Gaps	0-51

Sample Top	51 ft	Sample Bottom	207 ft
Washed Top	0 ft	Washed Bottom	0 ft
Duplicate Storage			
Comments			

<https://www.iihr.uiowa.edu/igs/geosam/well/296/general-information>