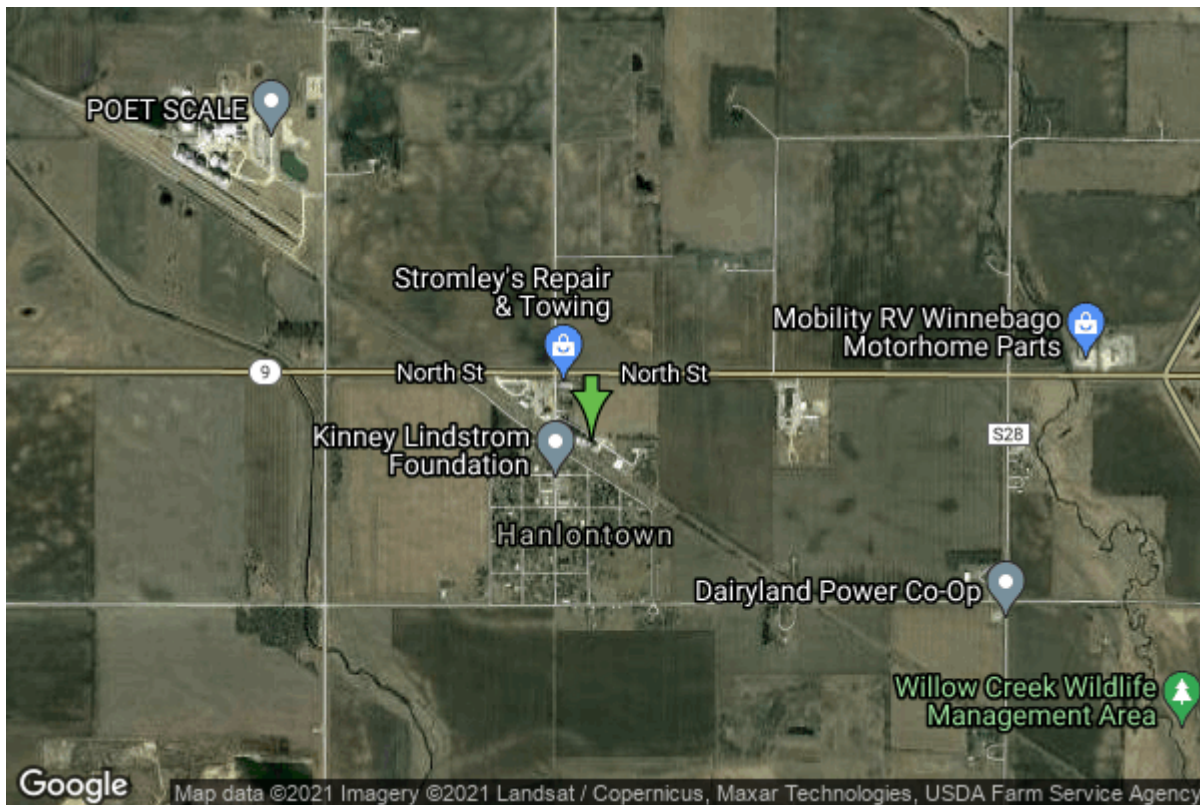


# Well W#30189 Information



<b>Date Received</b>		<b>State</b>	Iowa
<b>Owner Name</b>	Hanlontown, City Of	<b>County</b>	Worth
<b>Alt Name</b>		<b>Quadrangle</b>	Fertile, Iowa
<b>WNumber</b>	30189	<b>Township</b>	T98N
<b>PWTS ID</b>	0	<b>Range</b>	R21W
<b>PWS ID</b>	9830001	<b>Section</b>	30
<b>Storet ID</b>	0	<b>Quarter</b>	NW NW SW
<b>SDWIS ID</b>	2408727	<b>Latitude</b>	43.2823700000
<b>USGS ID</b>	0	<b>Longitude</b>	-93.3764700000
<b>Project</b>	Source Water Protection	<b>Accuracy</b>	
<b>Operator</b>	Unknown	<b>UTM X</b>	469455
		<b>UTM Y</b>	4792241

<b>Site Type</b>	Drilled hole	<b>Drilling Company</b>	Unknown
<b>Well Status</b>	Active	<b>Drilling Date</b>	
<b>Field Located</b>	No	<b>Drilling Method</b>	Unknown
<b>Elevation</b>	1202 ft	<b>Bedrock Depth</b>	37 ft
<b>Elevation Accuracy</b>	Digital Elevation Model Accurate to 5 ft	<b>Well Depth</b>	300 ft
<b>Landscape Position</b>	Unknown	<b>Total Depth</b>	300 ft
		<b>Well Types</b>	Municipal, Public Supply
		<b>Aquifers</b>	Devonian

## Log Information

<b>Date</b>	11/01/2009
<b>Log Types</b>	Strip log

Prepared By  
Comments

Bracken, Kyle A.

## Stratigraphy Information

<b>System</b>	Quaternary		
<b>Series</b>			
<b>Group</b>			
<b>Formation</b>			
<b>Member</b>			
<b>Submember</b>			
<b>Start Depth</b>	0.00 ft	<b>End Depth</b>	37.00 ft
<b>Contact Accuracy</b>			
<b>Penetration</b>			
<b>Primary Lithology</b>	Gravel	<b>Percent</b>	100
<b>Secondary Lithology</b>		<b>Percent</b>	
<b>Tertiary Lithology</b>		<b>Percent</b>	
<b>Comments</b>			

---

<b>System</b>	Devonian		
<b>Series</b>			
<b>Group</b>	Cedar Valley		
<b>Formation</b>			
<b>Member</b>			
<b>Submember</b>			
<b>Start Depth</b>	37.00 ft	<b>End Depth</b>	300.00 ft
<b>Contact Accuracy</b>			
<b>Penetration</b>			
<b>Primary Lithology</b>	Dolomite	<b>Percent</b>	95
<b>Secondary Lithology</b>	Limestone	<b>Percent</b>	4
<b>Tertiary Lithology</b>	Shale	<b>Percent</b>	1
<b>Comments</b>			

## Chip Storage Information

<b>Date</b>	08/02/1989		
<b>Storage</b>	OD2-493	<b>Bin</b>	
<b>Number of Boxes</b>	1	<b>Number of Samples</b>	57
<b>Sample Intervals</b>	0	<b>Sample Gaps</b>	15-30'
<b>Sample Top</b>	0 ft	<b>Sample Bottom</b>	300 ft
<b>Washed Top</b>	35 ft	<b>Washed Bottom</b>	300 ft
<b>Duplicate Storage</b>			
<b>Comments</b>			