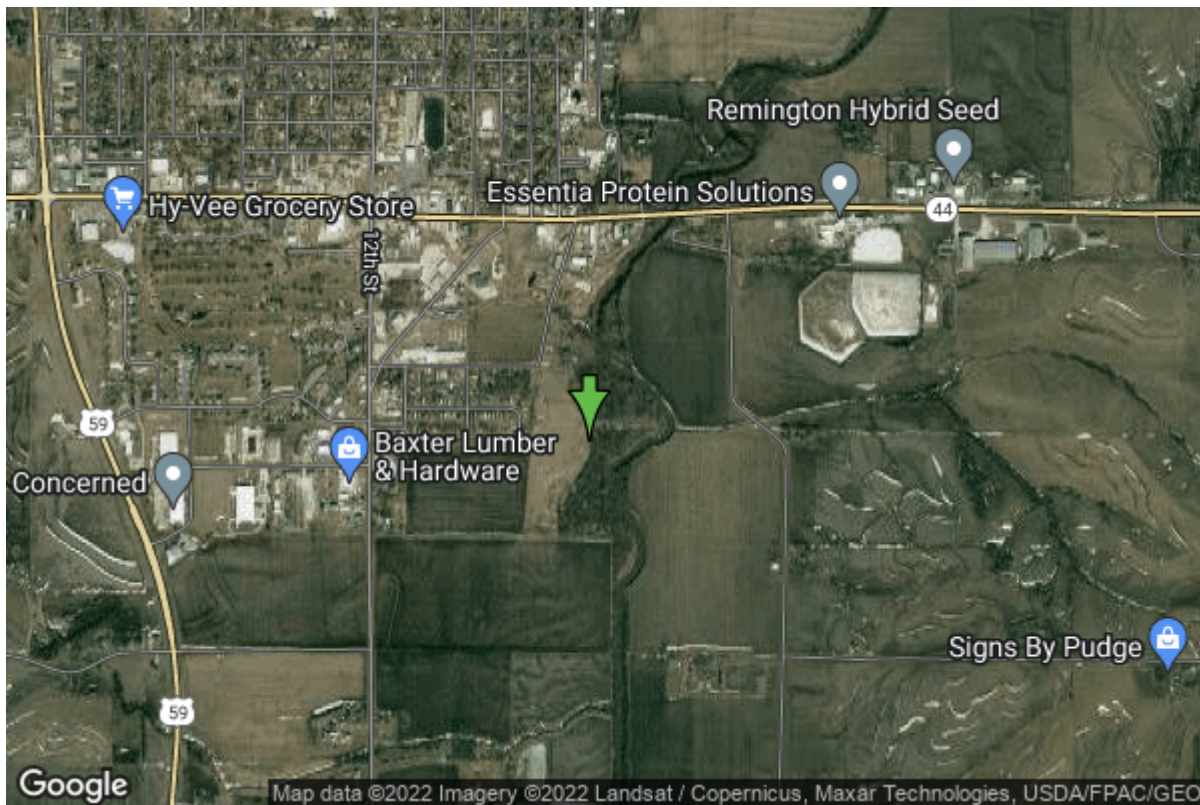


# Well W#30430 Information



<b>Date Received</b>		<b>State</b>	Iowa
<b>Owner Name</b>	Harlan, City Of	<b>County</b>	Shelby
<b>Alt Name</b>	#30	<b>Quadrangle</b>	Harlan, Iowa
<b>WNumber</b>	30430	<b>Township</b>	T79N
<b>PWTS ID</b>	0	<b>Range</b>	R38W
<b>PWS ID</b>	8335029	<b>Section</b>	19
<b>Storet ID</b>	0	<b>Quarter</b>	SW NE NE
<b>SDWIS ID</b>	2412149	<b>Latitude</b>	41.6382100000
<b>USGS ID</b>	0	<b>Longitude</b>	-95.3155300000
<b>Project</b>	Source Water Protection	<b>Accuracy</b>	
<b>Operator</b>	Unknown	<b>UTM X</b>	307145
		<b>UTM Y</b>	4612198

<b>Site Type</b>	Drilled hole	<b>Drilling Company</b>	Unknown
<b>Well Status</b>	Active	<b>Drilling Date</b>	01/01/1989
<b>Field Located</b>	No	<b>Drilling Method</b>	Unknown
<b>Elevation</b>	1180 ft	<b>Bedrock Depth</b>	0 ft
<b>Elevation Accuracy</b>	Digital Elevation Model Accurate to 5 ft	<b>Well Depth</b>	46 ft
<b>Landscape Position</b>	Unknown	<b>Total Depth</b>	36 ft
		<b>Well Types</b>	Municipal, Public Supply
		<b>Aquifers</b>	Alluvium

## Log Information

<b>Date</b>	
<b>Log Types</b>	Drillers log

Prepared By  
Comments

Harlan, City Of

## Chip Storage Information

<b>Date</b>	04/12/1995		
<b>Storage</b>	OD3-007	<b>Bin</b>	
<b>Number of Boxes</b>	1	<b>Number of Samples</b>	13
<b>Sample Intervals</b>	0	<b>Sample Gaps</b>	13-13.5,35.5-36.5
<b>Sample Top</b>	0 ft	<b>Sample Bottom</b>	37 ft
<b>Washed Top</b>	0 ft	<b>Washed Bottom</b>	0 ft
<b>Duplicate Storage</b>			
<b>Comments</b>			

<https://www.iihr.uiowa.edu/igs/geosam/well/30430/general-information>