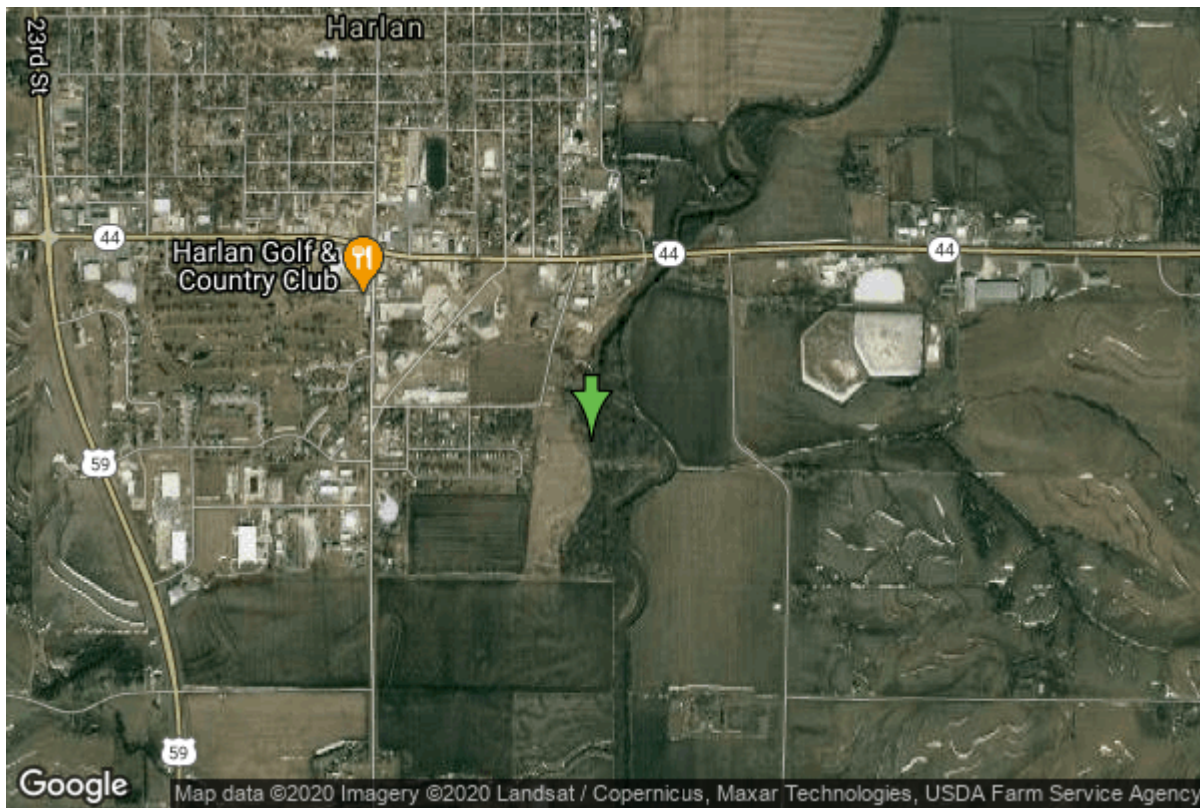


Well W#30431 Information



Date Received		State	Iowa
Owner Name	Harlan, City Of	County	Shelby
Alt Name	#31	Quadrangle	Harlan, Iowa
WNumber	30431	Township	T79N
PWTS ID	0	Range	R38W
PWS ID	8335029	Section	19
Storet ID	0	Quarter	NW SE SE
SDWIS ID	2407900	Latitude	41.6394800000
USGS ID	0	Longitude	-95.3155600000
Project	Source Water Protection	Accuracy	
Operator	Unknown	UTM X	307146
		UTM Y	4612339

Site Type	Drilled hole	Drilling Company	Unknown
Well Status	Active	Drilling Date	01/01/1989
Field Located	No	Drilling Method	Unknown
Elevation	1183 ft	Bedrock Depth	0 ft
Elevation Accuracy	Digital Elevation Model Accurate to 5 ft	Well Depth	48 ft
Landscape Position	Unknown	Total Depth	40 ft
		Well Types	Municipal, Public Supply
		Aquifers	Alluvium

Log Information

Date	05/20/2010
Log Types	Strip log

Prepared By Unknown
Comments

Date
Log Types Drillers log
Prepared By Harlan, City Of
Comments

Stratigraphy Information

System Quaternary
Series
Group
Formation
Member
Submember
Start Depth 0.00 ft **End Depth** 40.00 ft
Contact Accuracy
Penetration
Primary Lithology Sand And Gravel **Percent** 60
Secondary Lithology Soil Or Fill **Percent** 20
Tertiary Lithology Sand **Percent** 20
Comments

Chip Storage Information

Date 06/14/1995
Storage OD3-031 **Bin**
Number of Boxes 1 **Number of Samples** 13
Sample Intervals 0 **Sample Gaps**
Sample Top 0 ft **Sample Bottom** 40 ft
Washed Top 10 ft **Washed Bottom** 40 ft
Duplicate Storage
Comments

<https://www.iihr.uiowa.edu/igs/geosam/well/30431/general-information>