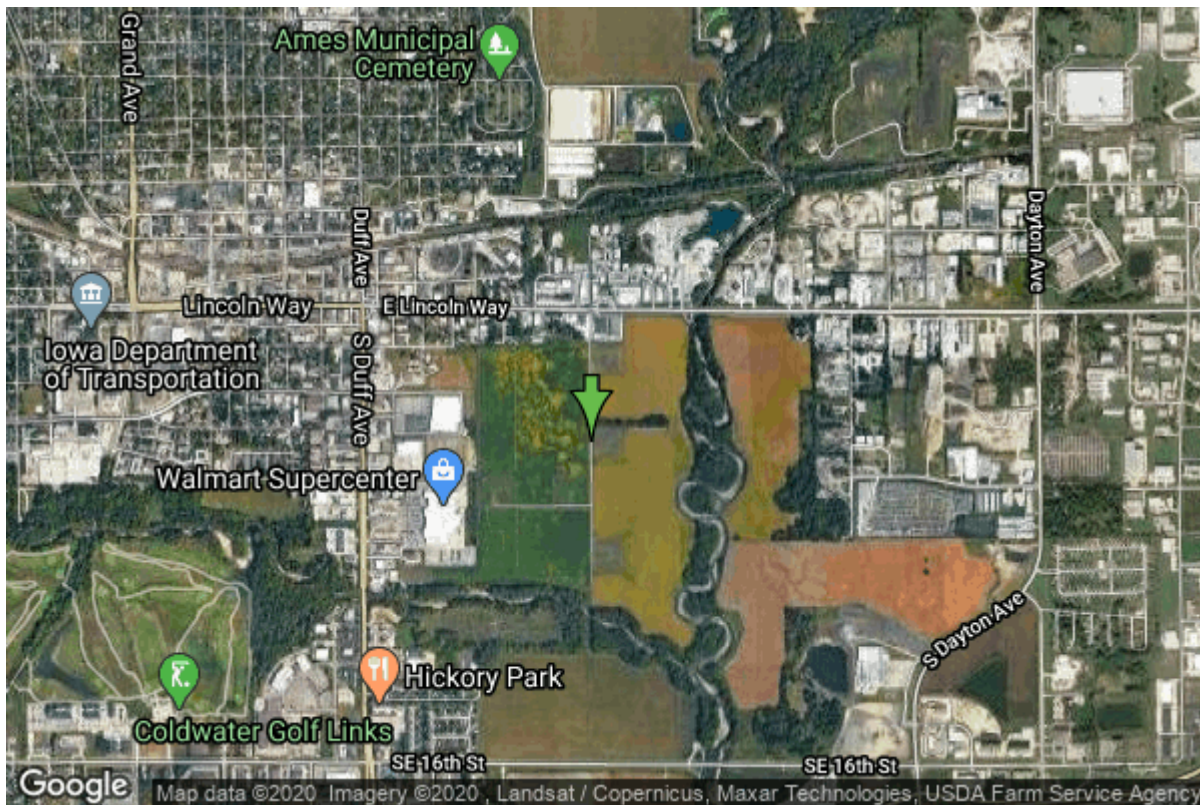


Well W#30983 Information



Date Received	12/14/1989	State	Iowa
Owner Name	Ames, City Of	County	Story
Alt Name	#21	Quadrangle	Ames East, Iowa
WNumber	30983	Township	T83N
PWTS ID	0	Range	R24W
PWS ID	8503039	Section	12
Storet ID	0	Quarter	NW SW NW
SDWIS ID	2412139	Latitude	42.0185830000
USGS ID	0	Longitude	-93.5999020000
Project	Source Water Protection	Accuracy	
Operator	Unknown	UTM X	450332
		UTM Y	4652014

Site Type	Drilled hole	Drilling Company	Layne Western - Ia.
Well Status	Active	Drilling Date	10/07/1989
Field Located	No	Drilling Method	Rotary
Elevation	885 ft	Bedrock Depth	0 ft
Elevation Accuracy	Digital Elevation Model Accurate to 5 ft	Well Depth	99 ft
Landscape Position	Valley	Total Depth	99 ft
		Well Types	Municipal, Public Supply
		Aquifers	Alluvium

Casing Construction Information

Date	10/07/1989	Casing Type	Steel
Start Depth	-2.00 ft	End Depth	48.00 ft

Diameter	20.00 in	Amount	50.00 ft
Comments			

Screen Construction Information

Date	10/07/1989		
Screen Type	Steel	Slot Size	0.08
Start Depth	48.00 ft	End Depth	98.00 ft
Diameter	20.00 in	Amount	50 ft
Comments			

Grout Construction Information

Date	10/07/1989		
Grout Type	Bentonite (Clay)	Grout Placement	Unknown
Start Depth	21.00 ft	End Depth	21.00 ft
Comments			

Date	10/07/1989		
Grout Type	Bentonite (Clay)	Grout Placement	Unknown
Start Depth	21.00 ft	End Depth	36.00 ft
Comments			

Log Information

Date	
Log Types	Drillers log
Prepared By	Ames, City Of
Comments	

Chip Storage Information

Date	07/05/1990		
Storage	OD2-572	Bin	
Number of Boxes	1	Number of Samples	19
Sample Intervals	5	Sample Gaps	0-5'
Sample Top	5 ft	Sample Bottom	99 ft
Washed Top	0 ft	Washed Bottom	0 ft
Duplicate Storage			
Comments			