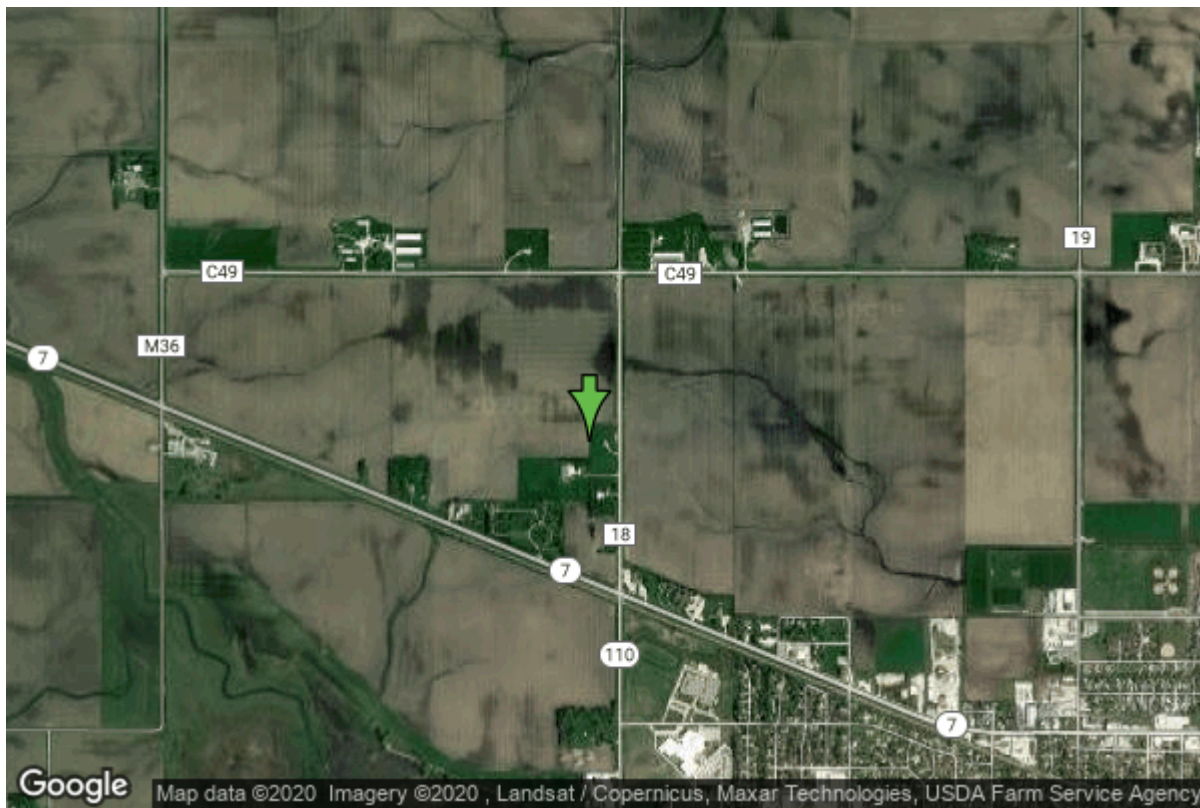


Well W#31664 Information



Date Received	02/07/1991	State	Iowa
Owner Name	Storm Lake, City Of	County	Buena Vista
Alt Name	#15	Quadrangle	Storm Lake, Iowa
WNumber	31664	Township	T91N
PWTS ID	0	Range	R37W
PWS ID	1178097	Section	32
Storet ID	0	Quarter	NE SE NE
SDWIS ID	2410148	Latitude	42.6566100000
USGS ID	0	Longitude	-95.2308900000
Project	Source Water Protection	Accuracy	
Operator	Unknown	UTM X	317151
		UTM Y	4725096

Site Type	Drilled hole	Drilling Company	Layne Western - Ia.
Well Status	Active	Drilling Date	05/01/1990
Field Located	No	Drilling Method	Rotary
Elevation	1450 ft	Bedrock Depth	330 ft
Elevation Accuracy	Digital Elevation Model Accurate to 5 ft	Well Depth	488 ft
Landscape Position	Upland	Total Depth	498 ft
		Well Types	Municipal, Public Supply
		Aquifers	Dakota/Cretaceous

Hole Construction Information

Date	05/01/1990	Depth	498.00 ft
Diameter	23.00 in		

Comments

Date	05/01/1990	Depth	340.00 ft
Diameter	29.00 in		
Comments			

Date	05/01/1990	Depth	140.00 ft
Diameter	36.00 in		
Comments			

Casing Construction Information

Date	05/01/1990	Casing Type	Steel
Start Depth	0.00 ft	End Depth	140.00 ft
Diameter	32.00 in	Amount	140.00 ft
Comments			

Date	05/01/1990	Casing Type	Steel
Start Depth	0.00 ft	End Depth	341.00 ft
Diameter	24.00 in	Amount	341.00 ft
Comments			

Date	05/01/1990	Casing Type	Steel
Start Depth	-3.00 ft	End Depth	385.00 ft
Diameter	16.00 in	Amount	388.00 ft
Comments			

Date	05/01/1990	Casing Type	Steel
Start Depth	485.00 ft	End Depth	488.00 ft
Diameter	16.00 in	Amount	3.00 ft
Comments			

Screen Construction Information

Date	05/01/1990	Slot Size	0.04
Screen Type	Steel	End Depth	485.00 ft
Start Depth	385.00 ft	Amount	100 ft
Diameter	16.00 in		
Comments			

Grout Construction Information

Date	05/01/1990	Grout Placement	Unknown
Grout Type	Cement	End Depth	340.00 ft
Start Depth	140.00 ft		
Comments			

Gravel Pack Construction Information

Date	05/01/1990	Slot Size	
Gravel Pack Type	Northern Gravel	End Depth	488.00 ft
Start Depth	263.00 ft		
Comments			

Log Information

Date	11/18/2009
Log Types	Strip log
Prepared By	Bouk, Michael Joseph
Comments	

Date	05/01/1990
Log Types	Drillers log
Prepared By	Layne Western - Ia.
Comments	

Stratigraphy Information

System	Quaternary		
Series	Pleistocene Series		
Group			
Formation			
Member			
Submember			
Start Depth	0.00 ft	End Depth	325.00 ft
Contact Accuracy			
Penetration			
Primary Lithology	Till	Percent	90
Secondary Lithology	Gravel	Percent	10
Tertiary Lithology		Percent	
Comments			

System	Cretaceous		
Series			
Group	Fort Benton ("Lower Colorado ")		
Formation	Dakota		
Member			
Submember			
Start Depth	325.00 ft	End Depth	498.00 ft
Contact Accuracy			
Penetration			
Primary Lithology	Sandstone	Percent	90
Secondary Lithology	Shale	Percent	10

Tertiary Lithology
Comments

Percent

Water Production Information

Date	10/02/2015	Start Time	
Aquifer		Yield	0 gallons per minute
Static Water Level	296.00 ft	Yield Method	
Pumping Water Level	0 ft	Pump Test	No
Measurement		Duration	0 mins
Pump Method			
Comments	Reported on 2015 DNR Dakota survey.		

Date	05/01/1990	Start Time	
Aquifer	Unknown	Yield	1213 gallons per minute
Static Water Level	280.00 ft	Yield Method	Unknown
Pumping Water Level	345 ft	Pump Test	Yes
Measurement	Unknown	Duration	0 mins
Pump Method	Unknown		
Comments			

Chip Storage Information

Date	02/20/1991		
Storage	OD2-651	Bin	
Number of Boxes	1	Number of Samples	79
Sample Intervals	5	Sample Gaps	100-10,225-30,235-40,25 0-325,370-75,490-95
Sample Top	0 ft	Sample Bottom	498 ft
Washed Top	325 ft	Washed Bottom	498 ft
Duplicate Storage			
Comments			

<https://www.iuhr.uiowa.edu/igs/geosam/well/31664/general-information>