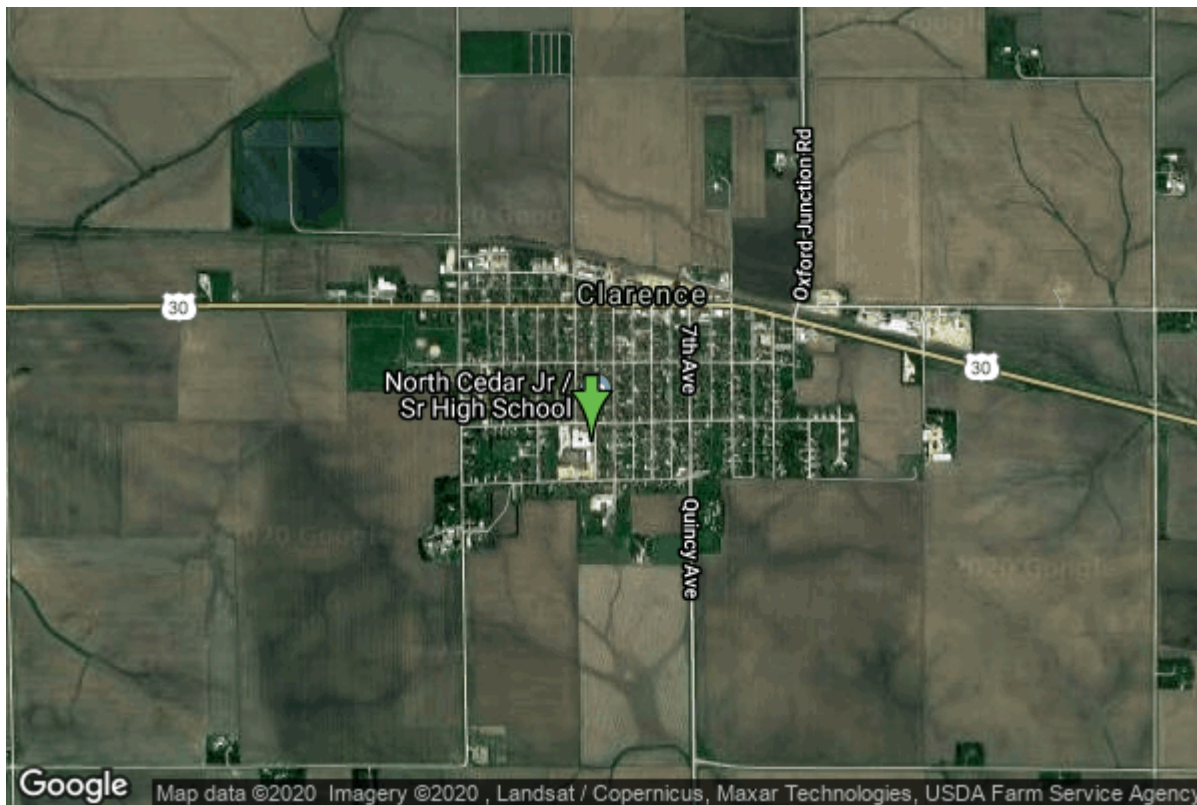


Well W#32295 Information



Date Received		State	Iowa
Owner Name	Clarence, City Of	County	Cedar
Alt Name		Quadrangle	Clarence, Iowa
WNumber	32295	Township	T82N
PWTS ID	0	Range	R2W
PWS ID	1630028	Section	27
Storet ID	0	Quarter	NE SE NW
SDWIS ID	2411880	Latitude	41.8843770000
USGS ID	0	Longitude	-91.0582890000
Project	Source Water Protection	Accuracy	
Operator	Unknown	UTM X	661102
		UTM Y	4638762

Site Type	Drilled hole	Drilling Company	Winslow Well Co.
Well Status	Active	Drilling Date	01/01/1990
Field Located	No	Drilling Method	Unknown
Elevation	852 ft	Bedrock Depth	58 ft
Elevation Accuracy	Digital Elevation Model Accurate to 5 ft	Well Depth	385 ft
Landscape Position	Upland	Total Depth	405 ft
		Well Types	Municipal, Public Supply
		Aquifers	Silurian

Log Information

Date	
Log Types	Strip log

Prepared By Unknown
Comments

Date
Log Types Drillers log
Prepared By Clarence, City Of
Comments

Stratigraphy Information

System Quaternary
Series Pleistocene Series
Group
Formation
Member
Submember
Start Depth 0.00 ft **End Depth** 58.00 ft
Contact Accuracy
Penetration
Primary Lithology Till **Percent** 96
Secondary Lithology Sand And Gravel **Percent** 2
Tertiary Lithology Dolomite **Percent** 2
Comments

System Silurian
Series
Group
Formation
Member
Submember
Start Depth 58.00 ft **End Depth** 370.00 ft
Contact Accuracy
Penetration
Primary Lithology Dolomite **Percent** 95
Secondary Lithology Chert/Chalcedony **Percent** 5
Tertiary Lithology
Comments

System Silurian
Series
Group
Formation Blanding
Member
Submember
Start Depth 370.00 ft **End Depth** 405.00 ft
Contact Accuracy
Penetration
Primary Lithology Dolomite **Percent** 70

Secondary Lithology	Chert/Chalcedony	Percent	30
Tertiary Lithology		Percent	
Comments			

Chip Storage Information

Date	01/12/1993	Bin	
Storage	OD2-833	Number of Samples	77
Number of Boxes	1	Sample Gaps	140-145,310-315,325-330 ,390-395
Sample Intervals	5	Sample Bottom	405 ft
Sample Top	0 ft	Washed Bottom	405 ft
Washed Top	55 ft		
Duplicate Storage			
Comments			

<https://www.iihr.uiowa.edu/igs/geosam/well/32295/general-information>