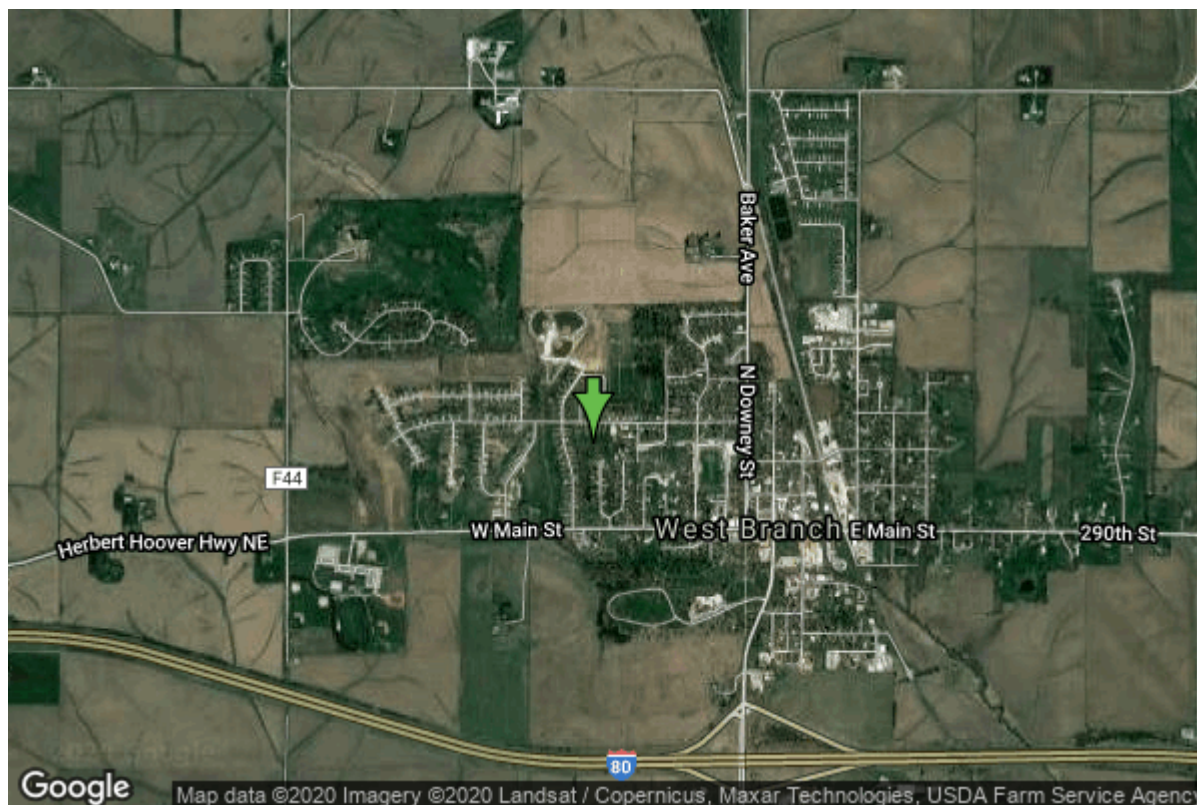


# Well W#33397 Information



<b>Date Received</b>		<b>State</b>	Iowa
<b>Owner Name</b>	West Branch, City Of	<b>County</b>	Cedar
<b>Alt Name</b>		<b>Quadrangle</b>	West Branch, Iowa
<b>WNumber</b>	33397	<b>Township</b>	T79N
<b>PWTS ID</b>	0	<b>Range</b>	R4W
<b>PWS ID</b>	1694000	<b>Section</b>	6
<b>Storet ID</b>	0	<b>Quarter</b>	SE SW NE
<b>SDWIS ID</b>	2411273	<b>Latitude</b>	41.6741100000
<b>USGS ID</b>	0	<b>Longitude</b>	-91.3525190000
<b>Project</b>	Source Water Protection	<b>Accuracy</b>	
<b>Operator</b>	Unknown	<b>UTM X</b>	637137
		<b>UTM Y</b>	4614905

<b>Site Type</b>	Unknown	<b>Drilling Company</b>	Unknown
<b>Well Status</b>	Active	<b>Drilling Date</b>	
<b>Field Located</b>	No	<b>Drilling Method</b>	Unknown
<b>Elevation</b>	748 ft	<b>Bedrock Depth</b>	90 ft
<b>Elevation Accuracy</b>	Digital Elevation Model Accurate to 5 ft	<b>Well Depth</b>	400 ft
<b>Landscape Position</b>	Unknown	<b>Total Depth</b>	400 ft
		<b>Well Types</b>	Municipal, Public Supply
		<b>Aquifers</b>	Silurian

## Casing Construction Information

<b>Date</b>	11/10/1992	<b>Casing Type</b>	Unknown
<b>Start Depth</b>	0.00 ft	<b>End Depth</b>	0.00 ft

<b>Diameter</b>	0.00 in	<b>Amount</b>	126.00 ft
<b>Comments</b>			

## Grout Construction Information

<b>Date</b>	11/10/1992		
<b>Grout Type</b>	Cement	<b>Grout Placement</b>	Unknown
<b>Start Depth</b>	0.00 ft	<b>End Depth</b>	126.00 ft
<b>Comments</b>			

## Pump Construction Information

<b>Date</b>	11/10/1992	<b>Pump Type</b>	Unknown
<b>Diameter</b>	0.00 in	<b>Rating</b>	400
<b>Depth Intake</b>	0.00 ft		
<b>Comments</b>			

## Log Information

<b>Date</b>	
<b>Log Types</b>	Strip log
<b>Prepared By</b>	Unknown
<b>Comments</b>	

---

<b>Date</b>	
<b>Log Types</b>	Drillers log
<b>Prepared By</b>	West Branch, City Of
<b>Comments</b>	

## Stratigraphy Information

<b>System</b>	Quaternary		
<b>Series</b>	Pleistocene Series		
<b>Group</b>			
<b>Formation</b>			
<b>Member</b>			
<b>Submember</b>			
<b>Start Depth</b>	0.00 ft	<b>End Depth</b>	90.00 ft
<b>Contact Accuracy</b>			
<b>Penetration</b>			
<b>Primary Lithology</b>	Till	<b>Percent</b>	100
<b>Secondary Lithology</b>		<b>Percent</b>	
<b>Tertiary Lithology</b>		<b>Percent</b>	
<b>Comments</b>			

---

<b>System</b>	Silurian		
<b>Series</b>			
<b>Group</b>			
<b>Formation</b>			
<b>Member</b>			
<b>Submember</b>			
<b>Start Depth</b>	90.00 ft	<b>End Depth</b>	345.00 ft
<b>Contact Accuracy</b>			
<b>Penetration</b>			
<b>Primary Lithology</b>	Dolomite	<b>Percent</b>	85
<b>Secondary Lithology</b>	Limestone	<b>Percent</b>	14
<b>Tertiary Lithology</b>	Chert/Chalcedony	<b>Percent</b>	1
<b>Comments</b>			

---

<b>System</b>	Silurian		
<b>Series</b>			
<b>Group</b>			
<b>Formation</b>	Blanding		
<b>Member</b>			
<b>Submember</b>			
<b>Start Depth</b>	345.00 ft	<b>End Depth</b>	387.00 ft
<b>Contact Accuracy</b>			
<b>Penetration</b>			
<b>Primary Lithology</b>	Dolomite	<b>Percent</b>	90
<b>Secondary Lithology</b>	Chert/Chalcedony	<b>Percent</b>	8
<b>Tertiary Lithology</b>	Shale	<b>Percent</b>	2
<b>Comments</b>			

---

<b>System</b>	Ordovician		
<b>Series</b>			
<b>Group</b>			
<b>Formation</b>	Maquoketa		
<b>Member</b>			
<b>Submember</b>			
<b>Start Depth</b>	387.00 ft	<b>End Depth</b>	400.00 ft
<b>Contact Accuracy</b>			
<b>Penetration</b>			
<b>Primary Lithology</b>	Dolomite	<b>Percent</b>	53
<b>Secondary Lithology</b>	Shale	<b>Percent</b>	45
<b>Tertiary Lithology</b>	Chert/Chalcedony	<b>Percent</b>	2
<b>Comments</b>			

## Water Production Information

<b>Date</b>	11/10/1992	<b>Start Time</b>	
<b>Aquifer</b>	Unknown		
<b>Static Water Level</b>	68.00 ft	<b>Yield</b>	389 gallons per minute

<b>Pumping Water Level</b>	72 ft	<b>Yield Method</b>	Unknown
<b>Measurement</b>	Unknown	<b>Pump Test</b>	No
<b>Pump Method</b>	Unknown	<b>Duration</b>	0 mins
<b>Comments</b>			

## Chip Storage Information

<b>Date</b>	02/23/1993	<b>Bin</b>	
<b>Storage</b>	OD2-841	<b>Number of Samples</b>	80
<b>Number of Boxes</b>	1	<b>Sample Gaps</b>	
<b>Sample Intervals</b>	5	<b>Sample Bottom</b>	400 ft
<b>Sample Top</b>	0 ft	<b>Washed Bottom</b>	400 ft
<b>Washed Top</b>	90 ft		
<b>Duplicate Storage</b>			
<b>Comments</b>			

<https://www.ihr.uiowa.edu/igs/geosam/well/33397/general-information>