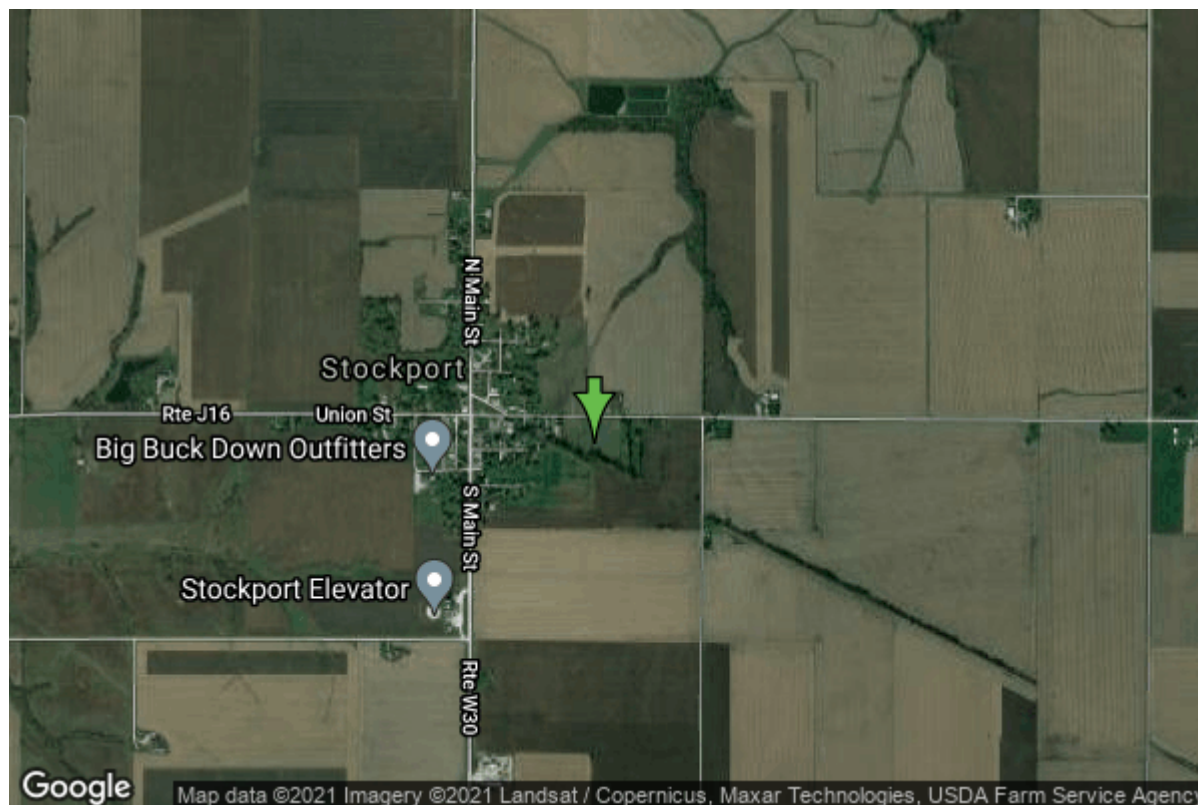


Well W#3408 Information



| | | | |
|----------------------|-------------------------|-------------------|-----------------|
| Date Received | | State | Iowa |
| Owner Name | Stockport, City Of | County | Van Buren |
| Alt Name | | Quadrangle | Stockport, Iowa |
| WNumber | 3408 | Township | T70N |
| PWTS ID | 0 | Range | R8W |
| PWS ID | 8973095 | Section | 19 |
| Storet ID | 0 | Quarter | NW NE NW |
| SDWIS ID | 0 | Latitude | 40.8563200000 |
| USGS ID | 0 | Longitude | -91.8275580000 |
| Project | Source Water Protection | Accuracy | |
| Operator | Unknown | UTM X | 598819 |
| | | UTM Y | 4523469 |

| | | | |
|---------------------------|---|-------------------------|--------------------------|
| Site Type | Drilled hole | Drilling Company | Van Winkle Well Drilling |
| Well Status | Not Used | Drilling Date | 09/01/1948 |
| Field Located | No | Drilling Method | Unknown |
| Elevation | 749 ft | Bedrock Depth | 97 ft |
| Elevation Accuracy | Digital Elevation Model Accurate to 5 ft | Well Depth | 448 ft |
| Landscape Position | Unknown | Total Depth | 448 ft |
| | | Well Types | Municipal |
| | | Aquifers | Mississippian |

Casing Construction Information

| | | | |
|--------------------|------------|--------------------|-----------|
| Date | 09/01/1948 | Casing Type | Steel |
| Start Depth | 0.00 ft | End Depth | 100.30 ft |

| | | | |
|-----------------|---------|---------------|-----------|
| Diameter | 8.00 in | Amount | 100.30 ft |
| Comments | | | |

| | | | |
|--------------------|------------|--------------------|-----------|
| Date | 09/01/1948 | Casing Type | Steel |
| Start Depth | 0.00 ft | End Depth | 178.00 ft |
| Diameter | 6.00 in | Amount | 178.00 ft |
| Comments | | | |

Log Information

| | |
|--------------------|--------------------|
| Date | 10/01/1948 |
| Log Types | Strip log |
| Prepared By | Parker, Mary Combs |
| Comments | |

| | |
|--------------------|--------------------------|
| Date | 09/01/1948 |
| Log Types | Drillers log |
| Prepared By | Van Winkle Well Drilling |
| Comments | |

| | |
|--------------------|---|
| Date | |
| Log Types | Strip log |
| Prepared By | Anderson, Keith E. & Parker, Mary Combs |
| Comments | |

Stratigraphy Information

| | | | |
|----------------------------|------------------------------------|------------------|----------|
| System | Quaternary | | |
| Series | Pleistocene Series | | |
| Group | Pre-Illinoian | | |
| Formation | | | |
| Member | | | |
| Submember | | | |
| Start Depth | 0.00 ft | End Depth | 25.00 ft |
| Contact Accuracy | | | |
| Penetration | | | |
| Primary Lithology | Till - Unoxidized And Unleached | Percent | 0 |
| Secondary Lithology | Silt | Percent | 0 |
| Tertiary Lithology | Sand | Percent | 0 |
| Comments | | | |

| | |
|------------------|--------------------|
| System | Quaternary |
| Series | Pleistocene Series |
| Group | Pre-Illinoian |
| Formation | |
| Member | |

| | | | |
|----------------------------|------------------------------------|------------------|----------|
| Submember | | | |
| Start Depth | 25.00 ft | End Depth | 40.00 ft |
| Contact Accuracy | | | |
| Penetration | | | |
| Primary Lithology | Till - Unoxidized And Unleached | Percent | 0 |
| Secondary Lithology | Sand | Percent | 0 |
| Tertiary Lithology | Unknown | Percent | 0 |
| Comments | | | |

| | | | |
|----------------------------|------------------------------------|------------------|----------|
| System | Quaternary | | |
| Series | Pleistocene Series | | |
| Group | Pre-Illinoian | | |
| Formation | | | |
| Member | | | |
| Submember | | | |
| Start Depth | 40.00 ft | End Depth | 45.00 ft |
| Contact Accuracy | | | |
| Penetration | | | |
| Primary Lithology | Till - Unoxidized And Unleached | Percent | 0 |
| Secondary Lithology | | Percent | |
| Tertiary Lithology | | Percent | |
| Comments | | | |

| | | | |
|----------------------------|------------------------------------|------------------|----------|
| System | Quaternary | | |
| Series | Pleistocene Series | | |
| Group | Pre-Illinoian | | |
| Formation | | | |
| Member | | | |
| Submember | | | |
| Start Depth | 45.00 ft | End Depth | 97.00 ft |
| Contact Accuracy | | | |
| Penetration | | | |
| Primary Lithology | Sand And Gravel | Percent | 80 |
| Secondary Lithology | Till - Unoxidized And Unleached | Percent | 20 |
| Tertiary Lithology | Unknown | Percent | 0 |
| Comments | | | |

| | | | |
|-------------------------|---|------------------|-----------|
| System | Pennsylvanian (Subsystem Of Carboniferous System) | | |
| Series | | | |
| Group | Cherokee | | |
| Formation | | | |
| Member | | | |
| Submember | | | |
| Start Depth | 97.00 ft | End Depth | 174.00 ft |
| Contact Accuracy | | | |
| Penetration | | | |

| | | | |
|----------------------------|-----------|----------------|---|
| Primary Lithology | Shale | Percent | 0 |
| Secondary Lithology | Siltstone | Percent | 0 |
| Tertiary Lithology | | Percent | |
| Comments | | | |

| | | | |
|----------------------------|---|------------------|-----------|
| System | Mississippian (Subsystem Of Carboniferous System) | | |
| Series | | | |
| Group | | | |
| Formation | St. Louis | | |
| Member | | | |
| Submember | | | |
| Start Depth | 174.00 ft | End Depth | 215.00 ft |
| Contact Accuracy | | | |
| Penetration | | | |
| Primary Lithology | Ls/Dol Mixed | Percent | 0 |
| Secondary Lithology | Sandstone | Percent | 0 |
| Tertiary Lithology | Chert/Chalcedony | Percent | 0 |
| Comments | | | |

| | | | |
|----------------------------|---|------------------|-----------|
| System | Mississippian (Subsystem Of Carboniferous System) | | |
| Series | | | |
| Group | Augusta | | |
| Formation | Warsaw | | |
| Member | | | |
| Submember | | | |
| Start Depth | 215.00 ft | End Depth | 250.00 ft |
| Contact Accuracy | | | |
| Penetration | | | |
| Primary Lithology | Ls/Dol Mixed | Percent | 0 |
| Secondary Lithology | Shale | Percent | 0 |
| Tertiary Lithology | Chert/Chalcedony | Percent | 0 |
| Comments | | | |

| | | | |
|----------------------------|---|------------------|-----------|
| System | Mississippian (Subsystem Of Carboniferous System) | | |
| Series | | | |
| Group | Augusta | | |
| Formation | Keokuk | | |
| Member | | | |
| Submember | | | |
| Start Depth | 250.00 ft | End Depth | 330.00 ft |
| Contact Accuracy | | | |
| Penetration | | | |
| Primary Lithology | Ls/Dol Mixed | Percent | 0 |
| Secondary Lithology | Chert/Chalcedony | Percent | 0 |
| Tertiary Lithology | Shale | Percent | 0 |
| Comments | | | |

| | | | |
|---------------|---|--|--|
| System | Mississippian (Subsystem Of Carboniferous System) | | |
| Series | | | |

| | | | |
|----------------------------|------------------|------------------|-----------|
| Group | Augusta | | |
| Formation | Burlington | | |
| Member | | | |
| Submember | | | |
| Start Depth | 330.00 ft | End Depth | 405.00 ft |
| Contact Accuracy | | | |
| Penetration | | | |
| Primary Lithology | Ls/Dol Mixed | Percent | 0 |
| Secondary Lithology | Chert/Chalcedony | Percent | 0 |
| Tertiary Lithology | Shale | Percent | 0 |
| Comments | | | |

| | | | |
|----------------------------|---|------------------|-----------|
| System | Mississippian (Subsystem Of Carboniferous System) | | |
| Series | | | |
| Group | Sub-Augusta | | |
| Formation | Maynes Creek | | |
| Member | Wassonville | | |
| Submember | | | |
| Start Depth | 405.00 ft | End Depth | 417.00 ft |
| Contact Accuracy | | | |
| Penetration | | | |
| Primary Lithology | Dolomite | Percent | 0 |
| Secondary Lithology | Chert/Chalcedony | Percent | 0 |
| Tertiary Lithology | Shale | Percent | 0 |
| Comments | | | |

| | | | |
|----------------------------|---|------------------|-----------|
| System | Mississippian (Subsystem Of Carboniferous System) | | |
| Series | | | |
| Group | North Hill | | |
| Formation | | | |
| Member | | | |
| Submember | | | |
| Start Depth | 417.00 ft | End Depth | 440.00 ft |
| Contact Accuracy | | | |
| Penetration | | | |
| Primary Lithology | Limestone | Percent | 0 |
| Secondary Lithology | Dolomite | Percent | 0 |
| Tertiary Lithology | | Percent | |
| Comments | | | |

| | | | |
|-------------------------|---|------------------|-----------|
| System | Mississippian (Subsystem Of Carboniferous System) | | |
| Series | | | |
| Group | North Hill | | |
| Formation | Prospect Hill | | |
| Member | | | |
| Submember | | | |
| Start Depth | 440.00 ft | End Depth | 448.00 ft |
| Contact Accuracy | | | |
| Penetration | | | |

| | | | |
|----------------------------|-----------|----------------|---|
| Primary Lithology | Siltstone | Percent | 0 |
| Secondary Lithology | Shale | Percent | 0 |
| Tertiary Lithology | Dolomite | Percent | 0 |
| Comments | | | |

Water Production Information

| | | | |
|----------------------------|------------|---------------------|----------------------|
| Date | 09/01/1948 | Start Time | |
| Aquifer | Unknown | | |
| Static Water Level | 99.00 ft | Yield | 7 gallons per minute |
| Pumping Water Level | 254 ft | Yield Method | Unknown |
| Measurement | Unknown | Pump Test | Yes |
| Pump Method | Unknown | Duration | 0 mins |
| Comments | | | |

Chip Storage Information

| | | | |
|--------------------------|---------|--------------------------|--------|
| Date | | Bin | |
| Storage | CE2-6,7 | Number of Samples | 100 |
| Number of Boxes | 2 | Sample Gaps | |
| Sample Intervals | 0 | Sample Bottom | 448 ft |
| Sample Top | 0 ft | Washed Bottom | 448 ft |
| Washed Top | 95 ft | | |
| Duplicate Storage | | | |
| Comments | | | |

<https://www.iuhr.uiowa.edu/igs/geosam/well/3408/general-information>