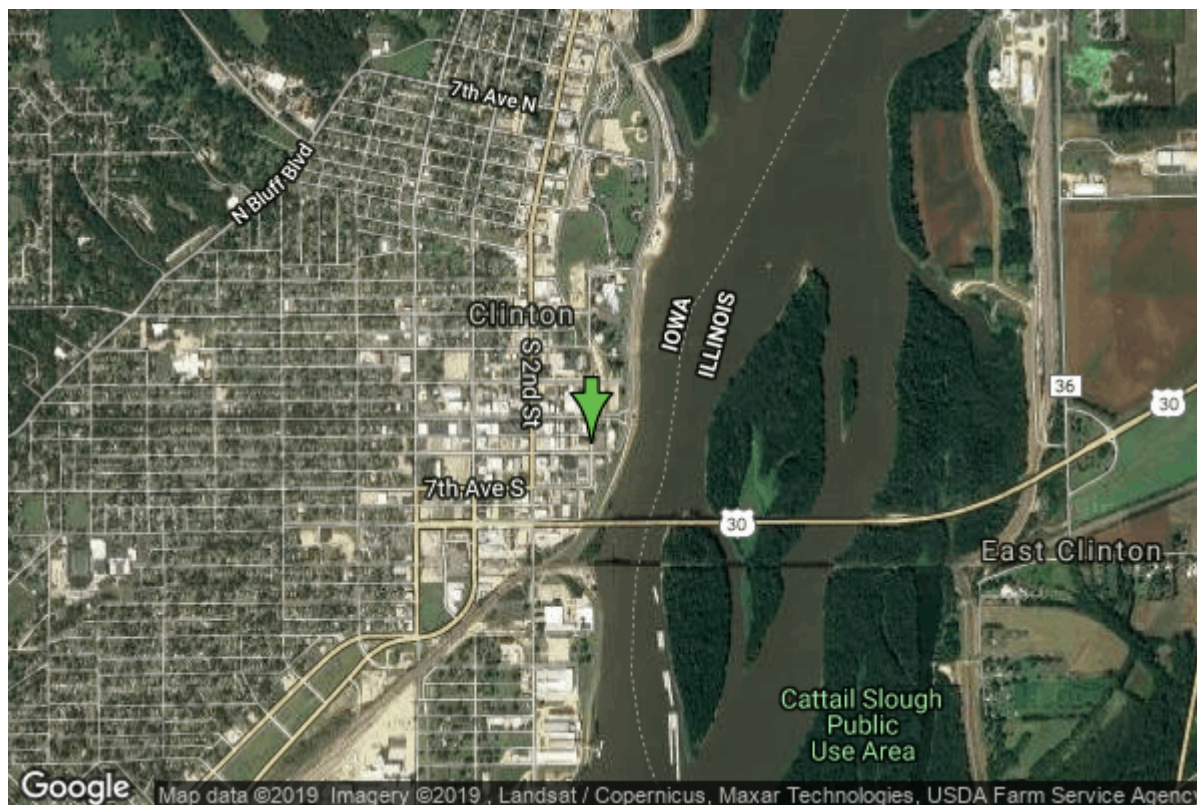


# Well W#344 Information



<b>Date Received</b>		<b>State</b>	Iowa
<b>Owner Name</b>	Clinton, City Of	<b>County</b>	Clinton
<b>Alt Name</b>	#7	<b>Quadrangle</b>	Clinton, Iowa-Ill.
<b>WNumber</b>	344	<b>Township</b>	T81N
<b>PWTS ID</b>	0	<b>Range</b>	R7E
<b>PWS ID</b>	2326048	<b>Section</b>	7
<b>Storet ID</b>	31230003	<b>Quarter</b>	NE
<b>SDWIS ID</b>	2409180	<b>Latitude</b>	41.8403300000
<b>USGS ID</b>	415025090110611	<b>Longitude</b>	-90.1849700000
<b>Project</b>	Source Water Protection	<b>Accuracy</b>	
<b>Operator</b>	Unknown	<b>UTM X</b>	733726
		<b>UTM Y</b>	4635880

---

<b>Site Type</b>	Drilled hole	<b>Drilling Company</b>	Varner Well Co.
<b>Well Status</b>	Active	<b>Drilling Date</b>	01/01/1936
<b>Field Located</b>	No	<b>Drilling Method</b>	Cable
<b>Elevation</b>	589 ft	<b>Bedrock Depth</b>	10 ft
<b>Elevation Accuracy</b>	Digital Elevation Model	<b>Well Depth</b>	2242 ft
	Accurate to 5 ft	<b>Total Depth</b>	2242 ft
<b>Landscape Position</b>	Valley	<b>Well Types</b>	Municipal, Public Supply
		<b>Aquifers</b>	Cambrian (blw St. Lawrence), Cambrian-Ordovician

# Casing Construction Information

<b>Date</b>	01/01/1936	<b>Casing Type</b>	Steel
<b>Start Depth</b>	0.00 ft	<b>End Depth</b>	360.00 ft
<b>Diameter</b>	16.00 in	<b>Amount</b>	360.00 ft
<b>Comments</b>			

---

<b>Date</b>	01/01/1936	<b>Casing Type</b>	Steel
<b>Start Depth</b>	360.00 ft	<b>End Depth</b>	930.00 ft
<b>Diameter</b>	12.00 in	<b>Amount</b>	570.00 ft
<b>Comments</b>			

---

<b>Date</b>		<b>Casing Type</b>	Unknown
<b>Start Depth</b>	0.00 ft	<b>End Depth</b>	896.00 ft
<b>Diameter</b>	0.00 in	<b>Amount</b>	896.00 ft
<b>Comments</b>	Casing information received from Iowa DNR on 3/9/2016.		

# Pump Construction Information

<b>Date</b>	01/01/1936	<b>Pump Type</b>	Unknown
<b>Diameter</b>	0.00 in	<b>Rating</b>	0
<b>Depth Intake</b>	0.00 ft		
<b>Comments</b>			

# Log Information

<b>Date</b>	06/01/1939
<b>Log Types</b>	Strip log
<b>Prepared By</b>	Unknown
<b>Comments</b>	

---

<b>Date</b>	
<b>Log Types</b>	Unknown
<b>Prepared By</b>	
<b>Comments</b>	

# Stratigraphy Information

<b>System</b>	Quaternary		
<b>Series</b>			
<b>Group</b>			
<b>Formation</b>			
<b>Member</b>			
<b>Submember</b>			
<b>Start Depth</b>	0.00 ft	<b>End Depth</b>	10.00 ft

<b>Contact Accuracy</b>			
<b>Penetration</b>			
<b>Primary Lithology</b>		<b>Percent</b>	
<b>Secondary Lithology</b>		<b>Percent</b>	
<b>Tertiary Lithology</b>		<b>Percent</b>	
<b>Comments</b>			
<hr/>			
<b>System</b>	Silurian		
<b>Series</b>			
<b>Group</b>			
<b>Formation</b>			
<b>Member</b>			
<b>Submember</b>			
<b>Start Depth</b>	10.00 ft	<b>End Depth</b>	135.00 ft
<b>Contact Accuracy</b>			
<b>Penetration</b>			
<b>Primary Lithology</b>	Dolomite	<b>Percent</b>	100
<b>Secondary Lithology</b>		<b>Percent</b>	
<b>Tertiary Lithology</b>		<b>Percent</b>	
<b>Comments</b>			
<hr/>			
<b>System</b>	Ordovician		
<b>Series</b>			
<b>Group</b>			
<b>Formation</b>	Maquoketa		
<b>Member</b>			
<b>Submember</b>			
<b>Start Depth</b>	135.00 ft	<b>End Depth</b>	348.00 ft
<b>Contact Accuracy</b>			
<b>Penetration</b>			
<b>Primary Lithology</b>	Shale	<b>Percent</b>	0
<b>Secondary Lithology</b>	Dolomite	<b>Percent</b>	0
<b>Tertiary Lithology</b>		<b>Percent</b>	
<b>Comments</b>			
<hr/>			
<b>System</b>	Ordovician		
<b>Series</b>			
<b>Group</b>	Galena		
<b>Formation</b>	Dubuque		
<b>Member</b>			
<b>Submember</b>			
<b>Start Depth</b>	348.00 ft	<b>End Depth</b>	390.00 ft
<b>Contact Accuracy</b>			
<b>Penetration</b>			
<b>Primary Lithology</b>	Dolomite	<b>Percent</b>	100
<b>Secondary Lithology</b>		<b>Percent</b>	
<b>Tertiary Lithology</b>		<b>Percent</b>	
<b>Comments</b>			

---

<b>System</b>	Ordovician		
<b>Series</b>			
<b>Group</b>	Galena		
<b>Formation</b>	Wise Lake		
<b>Member</b>			
<b>Submember</b>			
<b>Start Depth</b>	390.00 ft	<b>End Depth</b>	460.00 ft
<b>Contact Accuracy</b>			
<b>Penetration</b>			
<b>Primary Lithology</b>	Dolomite	<b>Percent</b>	100
<b>Secondary Lithology</b>		<b>Percent</b>	
<b>Tertiary Lithology</b>		<b>Percent</b>	
<b>Comments</b>			

---

<b>System</b>	Ordovician		
<b>Series</b>			
<b>Group</b>	Galena		
<b>Formation</b>	Dunleith		
<b>Member</b>			
<b>Submember</b>			
<b>Start Depth</b>	460.00 ft	<b>End Depth</b>	560.00 ft
<b>Contact Accuracy</b>			
<b>Penetration</b>			
<b>Primary Lithology</b>	Dolomite	<b>Percent</b>	100
<b>Secondary Lithology</b>		<b>Percent</b>	
<b>Tertiary Lithology</b>		<b>Percent</b>	
<b>Comments</b>			

---

<b>System</b>	Ordovician		
<b>Series</b>			
<b>Group</b>	Galena		
<b>Formation</b>	Decorah		
<b>Member</b>			
<b>Submember</b>			
<b>Start Depth</b>	560.00 ft	<b>End Depth</b>	600.00 ft
<b>Contact Accuracy</b>			
<b>Penetration</b>			
<b>Primary Lithology</b>	Dolomite	<b>Percent</b>	100
<b>Secondary Lithology</b>		<b>Percent</b>	
<b>Tertiary Lithology</b>		<b>Percent</b>	
<b>Comments</b>			

---

<b>System</b>	Ordovician		
<b>Series</b>			
<b>Group</b>	Galena		
<b>Formation</b>	Platteville		
<b>Member</b>			
<b>Submember</b>			

<b>Start Depth</b>	600.00 ft	<b>End Depth</b>	685.00 ft
<b>Contact Accuracy</b>			
<b>Penetration</b>			
<b>Primary Lithology</b>	Dolomite	<b>Percent</b>	0
<b>Secondary Lithology</b>	Limestone	<b>Percent</b>	0
<b>Tertiary Lithology</b>		<b>Percent</b>	
<b>Comments</b>			

---

<b>System</b>	Ordovician		
<b>Series</b>			
<b>Group</b>	Ancell		
<b>Formation</b>	Glenwood		
<b>Member</b>			
<b>Submember</b>			
<b>Start Depth</b>	685.00 ft	<b>End Depth</b>	695.00 ft
<b>Contact Accuracy</b>			
<b>Penetration</b>			
<b>Primary Lithology</b>	Shale	<b>Percent</b>	100
<b>Secondary Lithology</b>		<b>Percent</b>	
<b>Tertiary Lithology</b>		<b>Percent</b>	
<b>Comments</b>			

---

<b>System</b>	Ordovician		
<b>Series</b>			
<b>Group</b>	Ancell		
<b>Formation</b>	St. Peter Sandstone		
<b>Member</b>			
<b>Submember</b>			
<b>Start Depth</b>	695.00 ft	<b>End Depth</b>	735.00 ft
<b>Contact Accuracy</b>			
<b>Penetration</b>			
<b>Primary Lithology</b>	Sandstone	<b>Percent</b>	100
<b>Secondary Lithology</b>		<b>Percent</b>	
<b>Tertiary Lithology</b>		<b>Percent</b>	
<b>Comments</b>			

---

<b>System</b>	Ordovician		
<b>Series</b>			
<b>Group</b>	Prairie Du Chien		
<b>Formation</b>	Shakopee		
<b>Member</b>			
<b>Submember</b>			
<b>Start Depth</b>	735.00 ft	<b>End Depth</b>	935.00 ft
<b>Contact Accuracy</b>			
<b>Penetration</b>			
<b>Primary Lithology</b>	Dolomite	<b>Percent</b>	0
<b>Secondary Lithology</b>	Sandstone	<b>Percent</b>	0
<b>Tertiary Lithology</b>		<b>Percent</b>	
<b>Comments</b>			

---

<b>System</b>	Ordovician		
<b>Series</b>			
<b>Group</b>	Prairie Du Chien		
<b>Formation</b>	Oneota		
<b>Member</b>			
<b>Submember</b>			
<b>Start Depth</b>	935.00 ft	<b>End Depth</b>	1120.00 ft
<b>Contact Accuracy</b>			
<b>Penetration</b>			
<b>Primary Lithology</b>	Dolomite	<b>Percent</b>	100
<b>Secondary Lithology</b>		<b>Percent</b>	
<b>Tertiary Lithology</b>		<b>Percent</b>	
<b>Comments</b>			

---

<b>System</b>	Cambrian		
<b>Series</b>			
<b>Group</b>			
<b>Formation</b>	Jordan		
<b>Member</b>			
<b>Submember</b>			
<b>Start Depth</b>	1120.00 ft	<b>End Depth</b>	1210.00 ft
<b>Contact Accuracy</b>			
<b>Penetration</b>			
<b>Primary Lithology</b>	Sandstone	<b>Percent</b>	100
<b>Secondary Lithology</b>		<b>Percent</b>	
<b>Tertiary Lithology</b>		<b>Percent</b>	
<b>Comments</b>			

---

<b>System</b>	Cambrian		
<b>Series</b>			
<b>Group</b>			
<b>Formation</b>	St. Lawrence		
<b>Member</b>			
<b>Submember</b>			
<b>Start Depth</b>	1210.00 ft	<b>End Depth</b>	1290.00 ft
<b>Contact Accuracy</b>			
<b>Penetration</b>			
<b>Primary Lithology</b>	Dolomite	<b>Percent</b>	100
<b>Secondary Lithology</b>		<b>Percent</b>	
<b>Tertiary Lithology</b>		<b>Percent</b>	
<b>Comments</b>			

---

<b>System</b>	Cambrian		
<b>Series</b>			
<b>Group</b>	Tunnel City		
<b>Formation</b>	Lone Rock		
<b>Member</b>			
<b>Submember</b>			

<b>Start Depth</b>	1290.00 ft	<b>End Depth</b>	1425.00 ft
<b>Contact Accuracy</b>			
<b>Penetration</b>			
<b>Primary Lithology</b>	Dolomite	<b>Percent</b>	100
<b>Secondary Lithology</b>		<b>Percent</b>	
<b>Tertiary Lithology</b>		<b>Percent</b>	
<b>Comments</b>			

---

<b>System</b>	Cambrian		
<b>Series</b>			
<b>Group</b>	Tunnel City		
<b>Formation</b>	Wonewoc		
<b>Member</b>			
<b>Submember</b>			
<b>Start Depth</b>	1425.00 ft	<b>End Depth</b>	1558.00 ft
<b>Contact Accuracy</b>			
<b>Penetration</b>			
<b>Primary Lithology</b>	Sandstone	<b>Percent</b>	100
<b>Secondary Lithology</b>		<b>Percent</b>	
<b>Tertiary Lithology</b>		<b>Percent</b>	
<b>Comments</b>			

---

<b>System</b>	Cambrian		
<b>Series</b>			
<b>Group</b>	Tunnel City		
<b>Formation</b>	Eau Claire		
<b>Member</b>			
<b>Submember</b>			
<b>Start Depth</b>	1558.00 ft	<b>End Depth</b>	1820.00 ft
<b>Contact Accuracy</b>			
<b>Penetration</b>			
<b>Primary Lithology</b>	Sandstone	<b>Percent</b>	100
<b>Secondary Lithology</b>		<b>Percent</b>	
<b>Tertiary Lithology</b>		<b>Percent</b>	
<b>Comments</b>			

---

<b>System</b>	Cambrian		
<b>Series</b>			
<b>Group</b>	Tunnel City		
<b>Formation</b>	Mt. Simon		
<b>Member</b>			
<b>Submember</b>			
<b>Start Depth</b>	1820.00 ft	<b>End Depth</b>	2242.00 ft
<b>Contact Accuracy</b>			
<b>Penetration</b>			
<b>Primary Lithology</b>	Sandstone	<b>Percent</b>	100
<b>Secondary Lithology</b>		<b>Percent</b>	
<b>Tertiary Lithology</b>		<b>Percent</b>	
<b>Comments</b>			

# Water Production Information

<b>Date</b>	05/08/1969	<b>Start Time</b>	
<b>Aquifer</b>	Unknown		
<b>Static Water Level</b>	198.00 ft	<b>Yield</b>	1200 gallons per minute
<b>Pumping Water Level</b>	262 ft	<b>Yield Method</b>	Unknown
<b>Measurement</b>	Unknown	<b>Pump Test</b>	Yes
<b>Pump Method</b>	Unknown	<b>Duration</b>	0 mins
<b>Comments</b>			

---

<b>Date</b>	07/01/1968	<b>Start Time</b>	
<b>Aquifer</b>	Unknown		
<b>Static Water Level</b>	201.00 ft	<b>Yield</b>	1050 gallons per minute
<b>Pumping Water Level</b>	274 ft	<b>Yield Method</b>	Unknown
<b>Measurement</b>	Unknown	<b>Pump Test</b>	Yes
<b>Pump Method</b>	Unknown	<b>Duration</b>	0 mins
<b>Comments</b>			

---

<b>Date</b>	01/01/1936	<b>Start Time</b>	
<b>Aquifer</b>	Unknown		
<b>Static Water Level</b>	25.00 ft	<b>Yield</b>	1600 gallons per minute
<b>Pumping Water Level</b>	0 ft	<b>Yield Method</b>	Unknown
<b>Measurement</b>	Unknown	<b>Pump Test</b>	No
<b>Pump Method</b>	Unknown	<b>Duration</b>	0 mins
<b>Comments</b>			

# Chip Storage Information

<b>Date</b>		<b>Bin</b>	
<b>Storage</b>	WC5-2->6	<b>Number of Samples</b>	400
<b>Number of Boxes</b>	5	<b>Sample Gaps</b>	0-10,2100-2101
<b>Sample Intervals</b>	0	<b>Sample Bottom</b>	2100 ft
<b>Sample Top</b>	10 ft	<b>Washed Bottom</b>	0 ft
<b>Washed Top</b>	0 ft		
<b>Duplicate Storage</b>			
<b>Comments</b>			

<https://www.iuhr.uiowa.edu/igs/geosam/well/344/general-information>