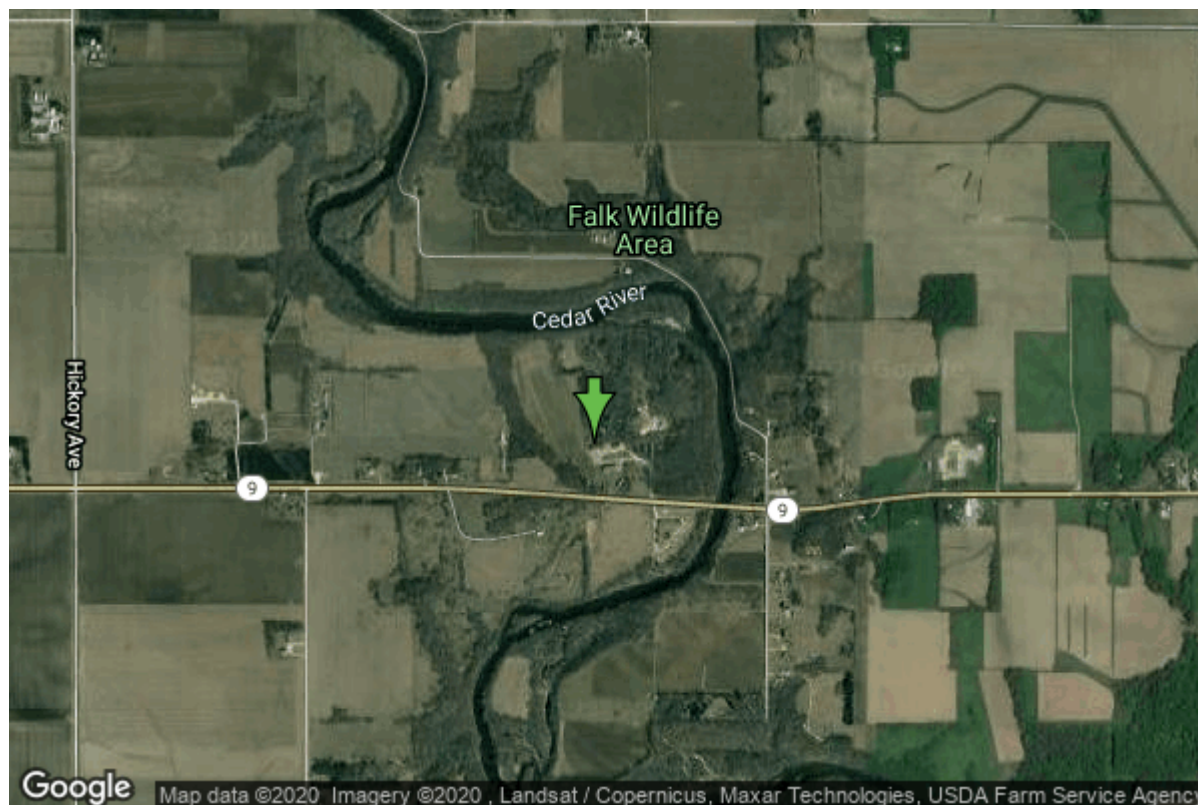


Well W#35660 Information



Date Received	02/06/1995	State	Iowa
Owner Name	Mitchell Co. Historical Soc.	County	Mitchell
Alt Name	#1 Nature Center	Quadrangle	Osage, Iowa
WNumber	35660	Township	T98N
PWTS ID	0	Range	R17W
PWS ID	6663905	Section	21
Storet ID	0	Quarter	SE SW SE
SDWIS ID	2585365	Latitude	43.2854584000
USGS ID	0	Longitude	-92.8572765000
Project	Source Water Protection	Accuracy	
Operator	Unknown	UTM X	511579
		UTM Y	4792525

Site Type	Drilled hole	Drilling Company	Shawver Well Co.
Well Status	Unknown	Drilling Date	11/09/1994
Field Located	No	Drilling Method	Rotary
Elevation	1085 ft	Bedrock Depth	25 ft
Elevation Accuracy	Topo Map Accurate to 2 ft	Well Depth	150 ft
Landscape Position	Level Surface	Total Depth	150 ft
		Well Types	Public Supply
		Aquifers	Devonian

Hole Construction Information

Date	11/09/1994	Depth	30.00 ft
Diameter	12.25 in		

Comments

Date	11/09/1994	Depth	119.00 ft
Diameter	10.00 in		
Comments			

Date	11/09/1994	Depth	150.00 ft
Diameter	6.00 in		
Comments			

Casing Construction Information

Date	11/09/1994	Casing Type	Steel
Start Depth	-2.00 ft	End Depth	119.00 ft
Diameter	6.00 in	Amount	121.00 ft
Comments			

Grout Construction Information

Date	11/09/1994	Grout Placement	Unknown
Grout Type	Cement	End Depth	119.00 ft
Start Depth	0.00 ft		
Comments			

Log Information

Date	11/20/2015
Log Types	Strip log
Prepared By	Clark, Ryan
Comments	

Date	
Log Types	Drillers log
Prepared By	Unknown
Comments	

Stratigraphy Information

System	Quaternary		
Series			
Group			
Formation			
Member			
Submember			
Start Depth	0.00 ft	End Depth	25.00 ft

Contact Accuracy Penetration			
Primary Lithology	Gravel	Percent	80
Secondary Lithology	Soil Or Fill	Percent	20
Tertiary Lithology		Percent	
Comments			

System	Devonian		
Series			
Group	Cedar Valley		
Formation	Coralville		
Member			
Submember			
Start Depth	25.00 ft	End Depth	72.00 ft
Contact Accuracy Penetration			
Primary Lithology	Dolomite	Percent	80
Secondary Lithology	Limestone	Percent	20
Tertiary Lithology		Percent	
Comments			

System	Devonian		
Series			
Group	Cedar Valley		
Formation	Little Cedar		
Member			
Submember			
Start Depth	72.00 ft	End Depth	150.00 ft
Contact Accuracy Penetration			
Primary Lithology	Dolomite	Percent	90
Secondary Lithology	Shale	Percent	10
Tertiary Lithology		Percent	
Comments			

Water Production Information

Date	11/09/1994	Start Time	
Aquifer	Unknown		
Static Water Level	10.00 ft	Yield	30 gallons per minute
Pumping Water Level	40 ft	Yield Method	Unknown
Measurement	Unknown	Pump Test	Yes
Pump Method	Airlifted	Duration	0 mins
Comments			

Chip Storage Information

Date	02/26/2014		
Storage	OD6-788	Bin	
Number of Boxes	1	Number of Samples	30
Sample Intervals	5	Sample Gaps	
Sample Top	0 ft	Sample Bottom	150 ft
Washed Top	25 ft	Washed Bottom	150 ft
Duplicate Storage			
Comments			

<https://www.iihr.uiowa.edu/igs/geosam/well/35660/general-information>