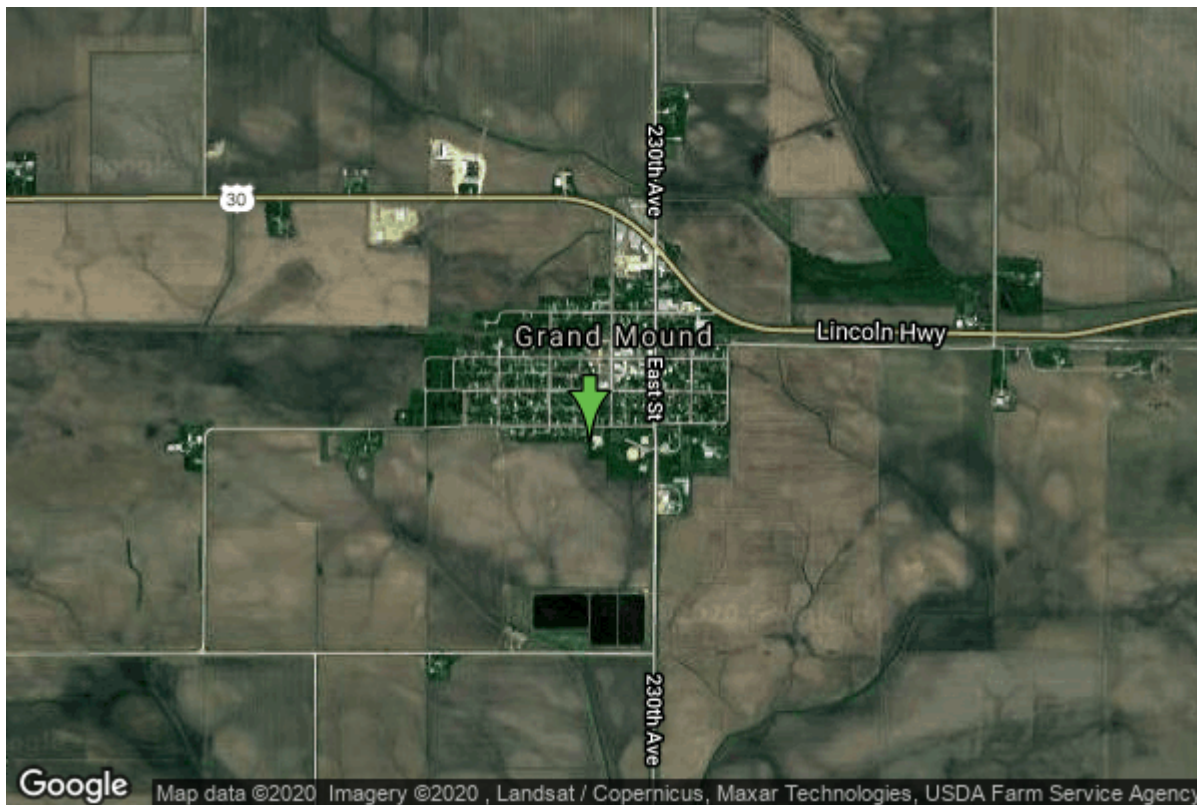


Well W#35950 Information



Date Received		State	Iowa
Owner Name	Grand Mound, City Of	County	Clinton
Alt Name	#3	Quadrangle	Grand Mound, Iowa
WNumber	35950	Township	T81N
PWTS ID	0	Range	R3E
PWS ID	2341099	Section	18
Storet ID	0	Quarter	SE NE NE
SDWIS ID	2407773	Latitude	41.8214440000
USGS ID	0	Longitude	-90.6479740000
Project	Source Water Protection	Accuracy	
Operator	Unknown	UTM X	695339
		UTM Y	4632626

Site Type	Drilled hole	Drilling Company	Unknown
Well Status	Active	Drilling Date	
Field Located	No	Drilling Method	Unknown
Elevation	712 ft	Bedrock Depth	58 ft
Elevation Accuracy	Digital Elevation Model Accurate to 5 ft	Well Depth	260 ft
Landscape Position	Unknown	Total Depth	298 ft
		Well Types	Municipal, Public Supply
		Aquifers	Silurian

Hole Construction Information

Date	03/10/1995	Depth	298.00 ft
Diameter	0.00 in		

Comments

Casing Construction Information

Date	03/10/1995	Casing Type	Steel
Start Depth	-2.00 ft	End Depth	83.80 ft
Diameter	12.00 in	Amount	85.80 ft
Comments			

Log Information

Date	04/29/2010
Log Types	Strip log
Prepared By	Bouk, Michael Joseph
Comments	

Date	
Log Types	Drillers log
Prepared By	Grand Mound, City Of
Comments	

Stratigraphy Information

System	Quaternary		
Series			
Group			
Formation			
Member			
Submember			
Start Depth	0.00 ft	End Depth	58.00 ft
Contact Accuracy			
Penetration			
Primary Lithology	Sand And Gravel	Percent	100
Secondary Lithology		Percent	
Tertiary Lithology		Percent	
Comments			

System	Silurian		
Series			
Group			
Formation			
Member			
Submember			
Start Depth	58.00 ft	End Depth	295.00 ft
Contact Accuracy			
Penetration			

Primary Lithology	Dolomite	Percent	93
Secondary Lithology	Chert/Chalcedony	Percent	7
Tertiary Lithology		Percent	
Comments			

Chip Storage Information

Date	05/15/1995		
Storage	OD3-008	Bin	
Number of Boxes	1	Number of Samples	56
Sample Intervals	5	Sample Gaps	0-20
Sample Top	20 ft	Sample Bottom	298 ft
Washed Top	65 ft	Washed Bottom	298 ft
Duplicate Storage			
Comments			

<https://www.ihr.uiowa.edu/igs/geosam/well/35950/general-information>