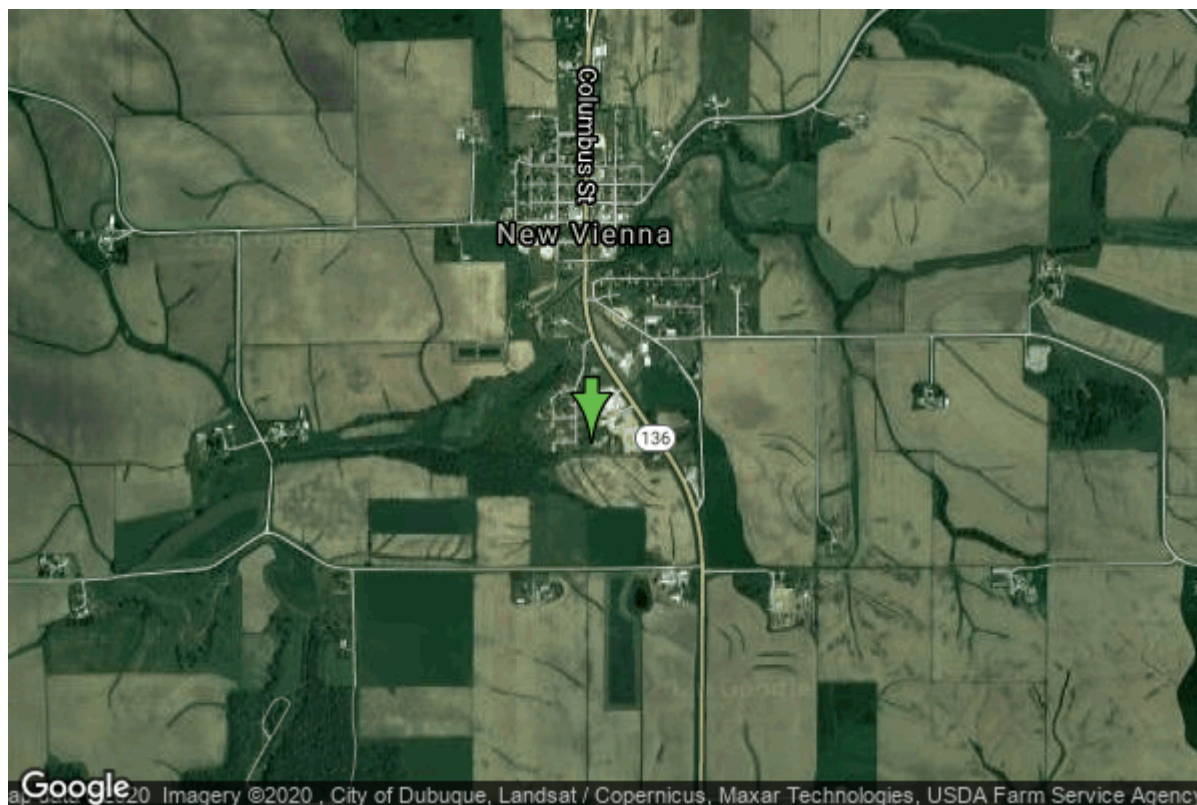


# Well W#35996 Information



<b>Date Received</b>		<b>State</b>	Iowa
<b>Owner Name</b>	New Vienna, City Of	<b>County</b>	Dubuque
<b>Alt Name</b>		<b>Quadrangle</b>	New Vienna, Iowa
<b>WNumber</b>	35996	<b>Township</b>	T89N
<b>PWTS ID</b>	0	<b>Range</b>	R2W
<b>PWS ID</b>	3165014	<b>Section</b>	8
<b>Storet ID</b>	0	<b>Quarter</b>	NW NW SW
<b>SDWIS ID</b>	2409103	<b>Latitude</b>	42.5411200000
<b>USGS ID</b>	0	<b>Longitude</b>	-91.1132600000
<b>Project Operator</b>	Source Water Protection Unknown	<b>Accuracy</b>	
		<b>UTM X</b>	654927
		<b>UTM Y</b>	4711584

<b>Site Type</b>	Drilled hole	<b>Drilling Company</b>	Northway Corporation
<b>Well Status</b>	Active	<b>Drilling Date</b>	05/20/1995
<b>Field Located</b>	No	<b>Drilling Method</b>	Unknown
<b>Elevation</b>	1063 ft	<b>Bedrock Depth</b>	30 ft
<b>Elevation Accuracy</b>	Digital Elevation Model Accurate to 5 ft	<b>Well Depth</b>	976 ft
<b>Landscape Position</b>	Upland	<b>Total Depth</b>	976 ft
		<b>Well Types</b>	Municipal, Public Supply
		<b>Aquifers</b>	Cambrian-Ordovician

## Hole Construction Information

<b>Date</b>	05/20/1995	<b>Depth</b>	720.00 ft
<b>Diameter</b>	13.75 in		

## Comments

---

Date	05/20/1995	Depth	976.00 ft
Diameter	7.75 in		
Comments			

## Casing Construction Information

Date	05/20/1995	Casing Type	Steel
Start Depth	-2.00 ft	End Depth	720.00 ft
Diameter	8.00 in	Amount	722.00 ft
Comments			

## Grout Construction Information

Date	05/20/1995	Grout Placement	Unknown
Grout Type	Cement	End Depth	720.00 ft
Start Depth	0.00 ft		
Comments			

## Log Information

Date	09/14/2006
Log Types	Strip log
Prepared By	Bouk, Michael
Comments	

---

Date	
Log Types	Drillers log
Prepared By	Northway Corporation
Comments	

## Formation Information

Formation Color	Brown	Formation Lithology	clay
Start Depth	0.00 ft	End Depth	5.00 ft
Comments			

---

Formation Color	Brown	Formation Lithology	clay
Start Depth	5.00 ft	End Depth	29.00 ft
Comments			

---

Formation Color	Tan	Formation Lithology	limestone
Start Depth	29.00 ft	End Depth	65.00 ft
Comments			

---

<b>Formation Color</b>	Tan	<b>Formation Lithology</b>	limestone
<b>Start Depth</b>	65.00 ft	<b>End Depth</b>	90.00 ft
<b>Comments</b>			

---

<b>Formation Color</b>	Tan	<b>Formation Lithology</b>	limestone
<b>Start Depth</b>	90.00 ft	<b>End Depth</b>	130.00 ft
<b>Comments</b>			

---

<b>Formation Color</b>	Gray	<b>Formation Lithology</b>	limestone
<b>Start Depth</b>	130.00 ft	<b>End Depth</b>	175.00 ft
<b>Comments</b>			

---

<b>Formation Color</b>	Gray	<b>Formation Lithology</b>	limestone
<b>Start Depth</b>	175.00 ft	<b>End Depth</b>	195.00 ft
<b>Comments</b>			

---

<b>Formation Color</b>	No Color Noted	<b>Formation Lithology</b>	shale
<b>Start Depth</b>	195.00 ft	<b>End Depth</b>	330.00 ft
<b>Comments</b>			

---

<b>Formation Color</b>	Brown	<b>Formation Lithology</b>	limestone
<b>Start Depth</b>	330.00 ft	<b>End Depth</b>	380.00 ft
<b>Comments</b>			

---

<b>Formation Color</b>	Brown	<b>Formation Lithology</b>	limestone
<b>Start Depth</b>	380.00 ft	<b>End Depth</b>	440.00 ft
<b>Comments</b>			

---

<b>Formation Color</b>	Tan	<b>Formation Lithology</b>	limestone
<b>Start Depth</b>	440.00 ft	<b>End Depth</b>	560.00 ft
<b>Comments</b>			

---

<b>Formation Color</b>	No Color Noted	<b>Formation Lithology</b>	limestone and shale
<b>Start Depth</b>	560.00 ft	<b>End Depth</b>	565.00 ft
<b>Comments</b>			

---

<b>Formation Color</b>	Tan	<b>Formation Lithology</b>	limestone
<b>Start Depth</b>	565.00 ft	<b>End Depth</b>	610.00 ft
<b>Comments</b>			

---

<b>Formation Color</b>	Tan	<b>Formation Lithology</b>	limestone and shale
<b>Start Depth</b>	610.00 ft	<b>End Depth</b>	615.00 ft
<b>Comments</b>			

---

<b>Formation Color</b>	Tan	<b>Formation Lithology</b>	limestone
<b>Start Depth</b>	615.00 ft	<b>End Depth</b>	700.00 ft
<b>Comments</b>			

## Comments

---

<b>Formation Color</b>	No Color Noted	<b>Formation Lithology</b>	limestone and shale
<b>Start Depth</b>	700.00 ft	<b>End Depth</b>	713.00 ft
<b>Comments</b>			

---

<b>Formation Color</b>	No Color Noted	<b>Formation Lithology</b>	sandstone
<b>Start Depth</b>	713.00 ft	<b>End Depth</b>	732.00 ft
<b>Comments</b>			

---

<b>Formation Color</b>	Brown	<b>Formation Lithology</b>	limestone
<b>Start Depth</b>	732.00 ft	<b>End Depth</b>	750.00 ft
<b>Comments</b>			

---

<b>Formation Color</b>	Brown	<b>Formation Lithology</b>	limestone
<b>Start Depth</b>	750.00 ft	<b>End Depth</b>	753.00 ft
<b>Comments</b>			

---

<b>Formation Color</b>	Brown	<b>Formation Lithology</b>	limestone
<b>Start Depth</b>	753.00 ft	<b>End Depth</b>	770.00 ft
<b>Comments</b>			

## Stratigraphy Information

**System** Quaternary

**Series**

**Group**

**Formation**

**Member**

**Submember**

**Start Depth** 0.00 ft **End Depth** 30.00 ft

**Contact Accuracy**

**Penetration**

**Primary Lithology** Silt **Percent** 90

**Secondary Lithology** Clay **Percent** 10

**Tertiary Lithology** **Percent**

**Comments**

---

**System** Silurian

**Series**

**Group**

**Formation**

**Member**

**Submember**

**Start Depth** 30.00 ft **End Depth** 215.00 ft

**Contact Accuracy**

**Penetration**

<b>Primary Lithology</b>	Dolomite	<b>Percent</b>	80
<b>Secondary Lithology</b>	Chert/Chalcedony	<b>Percent</b>	20
<b>Tertiary Lithology</b>		<b>Percent</b>	
<b>Comments</b>			

---

<b>System</b>	Ordovician		
<b>Series</b>			
<b>Group</b>			
<b>Formation</b>	Maquoketa		
<b>Member</b>			
<b>Submember</b>			
<b>Start Depth</b>	215.00 ft	<b>End Depth</b>	300.00 ft
<b>Contact Accuracy</b>			
<b>Penetration</b>			
<b>Primary Lithology</b>	Dolomite	<b>Percent</b>	80
<b>Secondary Lithology</b>	Shale	<b>Percent</b>	20
<b>Tertiary Lithology</b>		<b>Percent</b>	
<b>Comments</b>			

---

<b>System</b>	Ordovician		
<b>Series</b>			
<b>Group</b>			
<b>Formation</b>	Maquoketa		
<b>Member</b>	Elgin Limestone		
<b>Submember</b>			
<b>Start Depth</b>	300.00 ft	<b>End Depth</b>	385.00 ft
<b>Contact Accuracy</b>			
<b>Penetration</b>			
<b>Primary Lithology</b>	Dolomite	<b>Percent</b>	90
<b>Secondary Lithology</b>	Shale	<b>Percent</b>	10
<b>Tertiary Lithology</b>		<b>Percent</b>	
<b>Comments</b>			

---

<b>System</b>	Ordovician		
<b>Series</b>			
<b>Group</b>	Galena		
<b>Formation</b>			
<b>Member</b>			
<b>Submember</b>			
<b>Start Depth</b>	385.00 ft	<b>End Depth</b>	490.00 ft
<b>Contact Accuracy</b>			
<b>Penetration</b>			
<b>Primary Lithology</b>	Dolomite	<b>Percent</b>	100
<b>Secondary Lithology</b>		<b>Percent</b>	
<b>Tertiary Lithology</b>		<b>Percent</b>	
<b>Comments</b>			

---

<b>System</b>	Ordovician		
<b>Series</b>			

<b>Group</b>	Galena		
<b>Formation</b>	Dunleith		
<b>Member</b>			
<b>Submember</b>			
<b>Start Depth</b>	490.00 ft	<b>End Depth</b>	605.00 ft
<b>Contact Accuracy</b>			
<b>Penetration</b>			
<b>Primary Lithology</b>	Dolomite	<b>Percent</b>	99
<b>Secondary Lithology</b>	Chert/Chalcedony	<b>Percent</b>	1
<b>Tertiary Lithology</b>		<b>Percent</b>	
<b>Comments</b>			

---

<b>System</b>	Ordovician		
<b>Series</b>			
<b>Group</b>	Galena		
<b>Formation</b>	Decorah		
<b>Member</b>			
<b>Submember</b>			
<b>Start Depth</b>	605.00 ft	<b>End Depth</b>	675.00 ft
<b>Contact Accuracy</b>			
<b>Penetration</b>			
<b>Primary Lithology</b>	Limestone	<b>Percent</b>	60
<b>Secondary Lithology</b>	Dolomite	<b>Percent</b>	35
<b>Tertiary Lithology</b>	Shale	<b>Percent</b>	5
<b>Comments</b>			

---

<b>System</b>	Ordovician		
<b>Series</b>			
<b>Group</b>	Galena		
<b>Formation</b>	Platteville		
<b>Member</b>			
<b>Submember</b>			
<b>Start Depth</b>	675.00 ft	<b>End Depth</b>	715.00 ft
<b>Contact Accuracy</b>			
<b>Penetration</b>			
<b>Primary Lithology</b>	Dolomite	<b>Percent</b>	75
<b>Secondary Lithology</b>	Shale	<b>Percent</b>	20
<b>Tertiary Lithology</b>	Limestone	<b>Percent</b>	5
<b>Comments</b>			

---

<b>System</b>	Ordovician		
<b>Series</b>			
<b>Group</b>	Ancell		
<b>Formation</b>	St. Peter Sandstone		
<b>Member</b>			
<b>Submember</b>			
<b>Start Depth</b>	715.00 ft	<b>End Depth</b>	738.00 ft
<b>Contact Accuracy</b>			
<b>Penetration</b>			

<b>Primary Lithology</b>	Sandstone	<b>Percent</b>	50
<b>Secondary Lithology</b>	Shale	<b>Percent</b>	30
<b>Tertiary Lithology</b>	Chert/Chalcedony	<b>Percent</b>	20
<b>Comments</b>			

<b>System</b>	Ordovician		
<b>Series</b>			
<b>Group</b>	Prairie Du Chien		
<b>Formation</b>	Shakopee		
<b>Member</b>			
<b>Submember</b>			
<b>Start Depth</b>	738.00 ft	<b>End Depth</b>	925.00 ft
<b>Contact Accuracy</b>			
<b>Penetration</b>			
<b>Primary Lithology</b>	Dolomite	<b>Percent</b>	85
<b>Secondary Lithology</b>	Shale	<b>Percent</b>	10
<b>Tertiary Lithology</b>	Sandstone	<b>Percent</b>	5
<b>Comments</b>			

<b>System</b>	Ordovician		
<b>Series</b>			
<b>Group</b>	Prairie Du Chien		
<b>Formation</b>	Oneota		
<b>Member</b>			
<b>Submember</b>			
<b>Start Depth</b>	925.00 ft	<b>End Depth</b>	976.00 ft
<b>Contact Accuracy</b>			
<b>Penetration</b>			
<b>Primary Lithology</b>	Dolomite	<b>Percent</b>	45
<b>Secondary Lithology</b>	Chert/Chalcedony	<b>Percent</b>	45
<b>Tertiary Lithology</b>	Shale	<b>Percent</b>	10
<b>Comments</b>			

## Water Production Information

<b>Date</b>	06/12/2014	<b>Start Time</b>	
<b>Aquifer</b>			
<b>Static Water Level</b>	417.00 ft	<b>Yield</b>	0 gallons per minute
<b>Pumping Water Level</b>	432 ft	<b>Yield Method</b>	
<b>Measurement</b>		<b>Pump Test</b>	No
<b>Pump Method</b>		<b>Duration</b>	0 mins
<b>Comments</b>	Reported on DNR 2014 Jordan Questionnaire		

<b>Date</b>	05/19/1995	<b>Start Time</b>	
<b>Aquifer</b>	Unknown		
<b>Static Water Level</b>	391.00 ft	<b>Yield</b>	135 gallons per minute
<b>Pumping Water Level</b>	396 ft	<b>Yield Method</b>	Unknown
<b>Measurement</b>	Unknown	<b>Pump Test</b>	Yes

<b>Pump Method</b>	Unknown	<b>Duration</b>	0 mins
<b>Comments</b>			

## Chip Storage Information

<b>Date</b>	06/01/1995	<b>Bin</b>	
<b>Storage</b>	OD3-014>017	<b>Number of Samples</b>	191
<b>Number of Boxes</b>	4	<b>Sample Gaps</b>	730-45,770-72,900-10, 710-15 (plastic?)
<b>Sample Intervals</b>	5	<b>Sample Bottom</b>	976 ft
<b>Sample Top</b>	0 ft	<b>Washed Bottom</b>	976 ft
<b>Washed Top</b>	30 ft		
<b>Duplicate Storage</b>			
<b>Comments</b>			

<https://www.iihr.uiowa.edu/igs/geosam/well/35996/general-information>