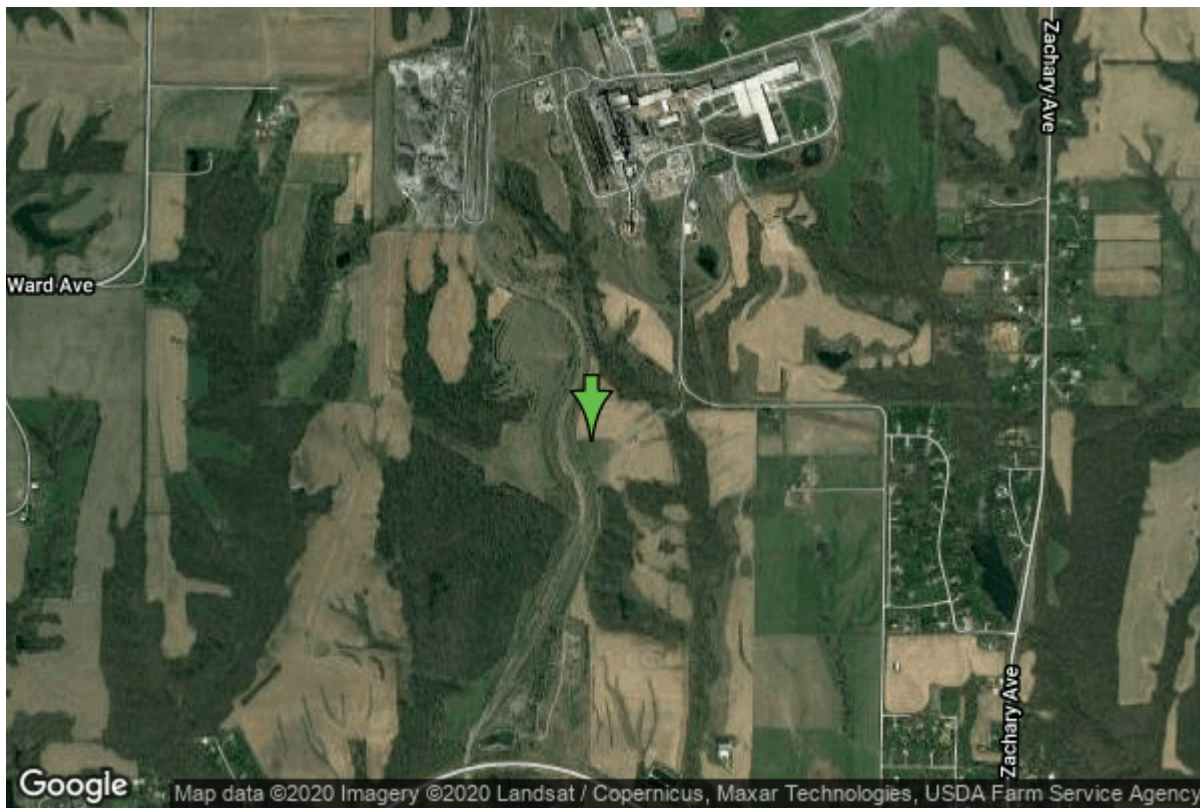


Well W#36341 Information



Date Received	08/08/1995	State	Iowa
Owner Name	Ipsco Steel Inc.	County	Muscatine
Alt Name	PPW-4	Quadrangle	Montpelier, Iowa-III.
WNumber	36341	Township	T77N
PWTS ID	0	Range	R1E
PWS ID	7038101	Section	14
Storet ID	0	Quarter	SW NW NW
SDWIS ID	2413516	Latitude	41.4718880000
USGS ID	0	Longitude	-90.8240500000
Project	Source Water Protection	Accuracy	
Operator	Unknown	UTM X	681695
		UTM Y	4593429

Site Type	Drilled hole	Drilling Company	Gingerich Well Co.
Well Status	Active	Drilling Date	07/24/1995
Field Located	No	Drilling Method	Rotary
Elevation	733 ft	Bedrock Depth	41 ft
Elevation Accuracy	Digital Elevation Model	Well Depth	580 ft
	Accurate to 5 ft	Total Depth	580 ft
Landscape Position	Upland	Well Types	Commercial, Public Supply
		Aquifers	Silurian

Hole Construction Information

Date	07/14/1995		
Diameter	6.00 in	Depth	90.00 ft
Comments			

Date	07/14/1995		
Diameter	3.50 in	Depth	570.20 ft
Comments			

Log Information

Date	
Log Types	Drillers log
Prepared By	Unknown
Comments	

Stratigraphy Information

System	Quaternary		
Series	Pleistocene Series		
Group			
Formation			
Member			
Submember			
Start Depth	0.00 ft	End Depth	41.00 ft
Contact Accuracy			
Penetration			
Primary Lithology	Loess	Percent	0
Secondary Lithology	Till	Percent	0
Tertiary Lithology		Percent	
Comments			

System	Pennsylvanian (Subsystem Of Carboniferous System)		
Series			
Group	Cherokee		
Formation			
Member			
Submember			
Start Depth	41.00 ft	End Depth	165.00 ft
Contact Accuracy			
Penetration			
Primary Lithology	Shale	Percent	0
Secondary Lithology	Unknown	Percent	0
Tertiary Lithology	Unknown	Percent	0
Comments			

System	Devonian		
Series			
Group	Cedar Valley		
Formation			
Member			
Submember			
Start Depth	165.00 ft	End Depth	218.00 ft
Contact Accuracy			
Penetration			
Primary Lithology	Limestone	Percent	0
Secondary Lithology	Unknown	Percent	0
Tertiary Lithology	Unknown	Percent	0
Comments			

System	Devonian		
Series			
Group	Wapsipinicon		
Formation			
Member			
Submember			
Start Depth	218.00 ft	End Depth	319.00 ft
Contact Accuracy			
Penetration			
Primary Lithology	Limestone	Percent	0
Secondary Lithology		Percent	
Tertiary Lithology		Percent	
Comments			

System	Silurian		
Series			
Group			
Formation			
Member			
Submember			
Start Depth	319.00 ft	End Depth	495.00 ft
Contact Accuracy			
Penetration			
Primary Lithology		Percent	
Secondary Lithology		Percent	
Tertiary Lithology		Percent	
Comments			

System	Ordovician		
Series			
Group			
Formation	Maquoketa		
Member			
Submember			

Start Depth	495.00 ft	End Depth	570.00 ft
Contact Accuracy			
Penetration			
Primary Lithology		Percent	
Secondary Lithology		Percent	
Tertiary Lithology		Percent	
Comments			

Water Production Information

Date	07/14/1995	Start Time	
Aquifer	Unknown		
Static Water Level	178.00 ft	Yield	0 gallons per minute
Pumping Water Level	0 ft	Yield Method	Unknown
Measurement	Unknown	Pump Test	Yes
Pump Method	Unknown	Duration	0 mins
Comments			

Core Storage Information

Date		Percent Recovery	100 %
Storage	NN82R2-OO13R1	Number Boxes	50
Start Depth	89.70 ft	End Depth	570.20 ft
Diameter	NX - 1 7/8"	Split	Full
Microfossils	No	Thin Sections	No
Comments			

<https://www.iihr.uiowa.edu/igs/geosam/well/36341/general-information>