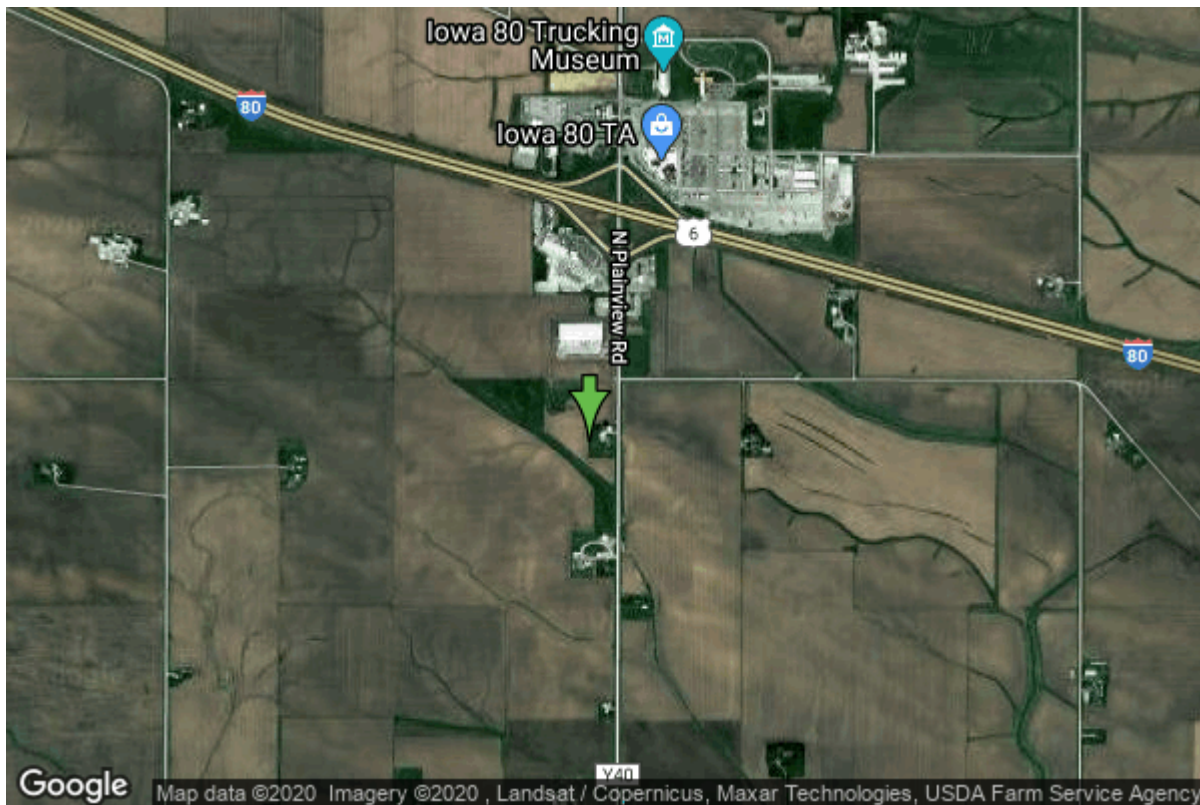


Well W#36602 Information



Date Received		State	Iowa
Owner Name	Walcott, City Of	County	Scott
Alt Name	#4	Quadrangle	Walcott, Iowa
WNumber	36602	Township	T79N
PWTS ID	0	Range	R1E
PWS ID	8285058	Section	36
Storet ID	0	Quarter	NE NE SE
SDWIS ID	2571843	Latitude	41.6091200000
USGS ID	0	Longitude	-90.7836400000
Project	Source Water Protection	Accuracy	
Operator	Unknown	UTM X	684678
		UTM Y	4608751

Site Type	Drilled hole	Drilling Company	Winslow Well Co.
Well Status	Active	Drilling Date	12/15/1995
Field Located	No	Drilling Method	Rotary
Elevation	770 ft	Bedrock Depth	104 ft
Elevation Accuracy	Digital Elevation Model Accurate to 5 ft	Well Depth	470 ft
Landscape Position	Unknown	Total Depth	470 ft
		Well Types	Municipal, Public Supply
		Aquifers	Silurian

Hole Construction Information

Date	12/15/1995	Depth	104.00 ft
Diameter	20.00 in		

Comments

Date	12/15/1995		
Diameter	17.50 in	Depth	164.00 ft
Comments			

Date	12/15/1995		
Diameter	12.00 in	Depth	470.00 ft
Comments			

Casing Construction Information

Date	12/15/1995	Casing Type	Steel
Start Depth	0.00 ft	End Depth	104.00 ft
Diameter	18.00 in	Amount	104.00 ft
Comments			

Date	12/15/1995	Casing Type	Steel
Start Depth	0.00 ft	End Depth	164.00 ft
Diameter	12.00 in	Amount	164.00 ft
Comments			

Grout Construction Information

Date	12/15/1995		
Grout Type	Cement	Grout Placement	Unknown
Start Depth	0.00 ft	End Depth	164.00 ft
Comments			

Log Information

Date			
Log Types	Strip log		
Prepared By	Unknown		
Comments			

Date			
Log Types	Drillers log		
Prepared By	Walcott, City Of		
Comments			

Stratigraphy Information

System	Quaternary
Series	Pleistocene Series

Group			
Formation			
Member			
Submember			
Start Depth	0.00 ft	End Depth	104.00 ft
Contact Accuracy			
Penetration			
Primary Lithology		Percent	
Secondary Lithology		Percent	
Tertiary Lithology		Percent	
Comments			
<hr/>			
System	Silurian		
Series			
Group			
Formation	Gower		
Member			
Submember			
Start Depth	104.00 ft	End Depth	175.00 ft
Contact Accuracy			
Penetration			
Primary Lithology		Percent	
Secondary Lithology		Percent	
Tertiary Lithology		Percent	
Comments			
<hr/>			
System	Silurian		
Series			
Group			
Formation	Scotch Grove		
Member			
Submember			
Start Depth	175.00 ft	End Depth	360.00 ft
Contact Accuracy			
Penetration			
Primary Lithology		Percent	
Secondary Lithology		Percent	
Tertiary Lithology		Percent	
Comments			
<hr/>			
System	Silurian		
Series			
Group			
Formation	Hopkinton		
Member			
Submember			
Start Depth	360.00 ft	End Depth	435.00 ft
Contact Accuracy			
Penetration			

Primary Lithology		Percent	
Secondary Lithology		Percent	
Tertiary Lithology		Percent	
Comments			

System	Silurian		
Series			
Group			
Formation	Blanding		
Member			
Submember			
Start Depth	435.00 ft	End Depth	467.00 ft
Contact Accuracy			
Penetration			
Primary Lithology		Percent	
Secondary Lithology		Percent	
Tertiary Lithology		Percent	
Comments			

System	Ordovician		
Series			
Group			
Formation	Maquoketa		
Member			
Submember			
Start Depth	467.00 ft	End Depth	470.00 ft
Contact Accuracy			
Penetration			
Primary Lithology		Percent	
Secondary Lithology		Percent	
Tertiary Lithology		Percent	
Comments			

Water Production Information

Date	12/15/1995	Start Time	09:05
Aquifer	Unknown		
Static Water Level	72.00 ft	Yield	748 gallons per minute
Pumping Water Level	145 ft	Yield Method	Unknown
Measurement	Unknown	Pump Test	Yes
Pump Method	Unknown	Duration	1200 mins
Comments	1 HOUR RECOVERY RECORD. Formal pump test on file		

Chip Storage Information

Date	03/07/1996		
Storage	OD3-328	Bin	

Number of Boxes	1	Number of Samples	91
Sample Intervals	5	Sample Gaps	160-65,415-20,460-65
Sample Top	0 ft	Sample Bottom	470 ft
Washed Top	100 ft	Washed Bottom	470 ft
Duplicate Storage			
Comments			

<https://www.iihr.uiowa.edu/igs/geosam/well/36602/general-information>