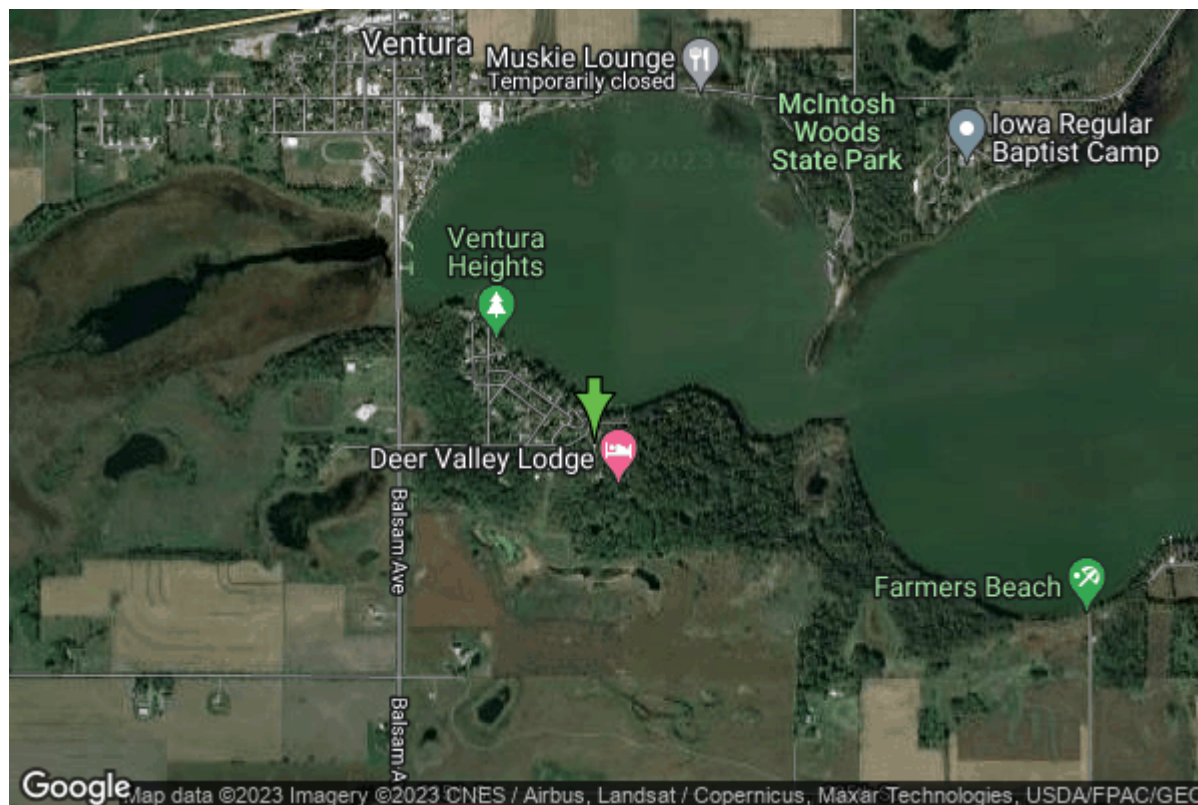


Well W#36691 Information



Date Received	09/05/1995	State	Iowa
Owner Name	Open Bible Conference	County	Cerro Gordo
	Ground	Quadrangle	Ventura Heights, Iowa
Alt Name	#3	Township	T96N
WNumber	36691	Range	R22W
PWTS ID	0	Section	20
PWS ID	1785421	Quarter	SW NE SE
Storet ID	0	Latitude	43.1157390000
SDWIS ID	2410849	Longitude	-93.4684760000
USGS ID	0	Accuracy	
Project	Source Water Protection	UTM X	461887
Operator	Unknown	UTM Y	4773774

Site Type	Drilled hole	Drilling Company	Beemer Well Drilling
Well Status	Active	Drilling Date	07/27/1995
Field Located	No	Drilling Method	Rotary
Elevation	1247 ft	Bedrock Depth	140 ft
Elevation Accuracy	Digital Elevation Model	Well Depth	215 ft
	Accurate to 5 ft	Total Depth	215 ft
Landscape Position	Hillside	Well Types	Public Supply
		Aquifers	

Hole Construction Information

Date	07/27/1995	Depth	146.00 ft
Diameter	12.75 in		

Comments

Date	07/27/1995		
Diameter	6.00 in	Depth	215.00 ft
Comments			

Casing Construction Information

Date	07/27/1995	Casing Type	Unknown
Start Depth	-2.00 ft	End Depth	146.00 ft
Diameter	6.00 in	Amount	148.00 ft
Comments			

Grout Construction Information

Date	07/27/1995		
Grout Type	Cement	Grout Placement	Unknown
Start Depth	0.00 ft	End Depth	148.00 ft
Comments			

Log Information

Date	
Log Types	Drillers log
Prepared By	Unknown
Comments	

Date	
Log Types	Strip log
Prepared By	Unknown
Comments	

Stratigraphy Information

System	Quaternary		
Series	Pleistocene Series		
Group			
Formation			
Member			
Submember			
Start Depth	0.00 ft	End Depth	140.00 ft
Contact Accuracy			
Penetration			
Primary Lithology	Silt	Percent	0
Secondary Lithology	Till	Percent	0

Tertiary Lithology		Percent	
Comments			
System	Devonian		
Series			
Group	Yellow Spring (New Albany)		
Formation	Lime Creek		
Member			
Submember			
Start Depth	140.00 ft	End Depth	190.00 ft
Contact Accuracy			
Penetration			
Primary Lithology	Limestone	Percent	0
Secondary Lithology	Dolomite	Percent	0
Tertiary Lithology	Shale	Percent	0
Comments			

System	Devonian		
Series			
Group	Cedar Valley		
Formation			
Member			
Submember			
Start Depth	190.00 ft	End Depth	215.00 ft
Contact Accuracy			
Penetration			
Primary Lithology	Limestone	Percent	0
Secondary Lithology	Dolomite	Percent	0
Tertiary Lithology		Percent	
Comments			

Water Production Information

Date	07/27/1995	Start Time	
Aquifer	Unknown		
Static Water Level	70.00 ft	Yield	30 gallons per minute
Pumping Water Level	120 ft	Yield Method	Unknown
Measurement	Unknown	Pump Test	Yes
Pump Method	Unknown	Duration	0 mins
Comments			

Chip Storage Information

Date	10/17/1995		
Storage	OD3-213	Bin	
Number of Boxes	1	Number of Samples	43
Sample Intervals	5	Sample Gaps	

Sample Top	0 ft	Sample Bottom	215 ft
Washed Top	140 ft	Washed Bottom	215 ft
Duplicate Storage			
Comments			

<https://www.iihr.uiowa.edu/igs/geosam/well/36691/general-information>