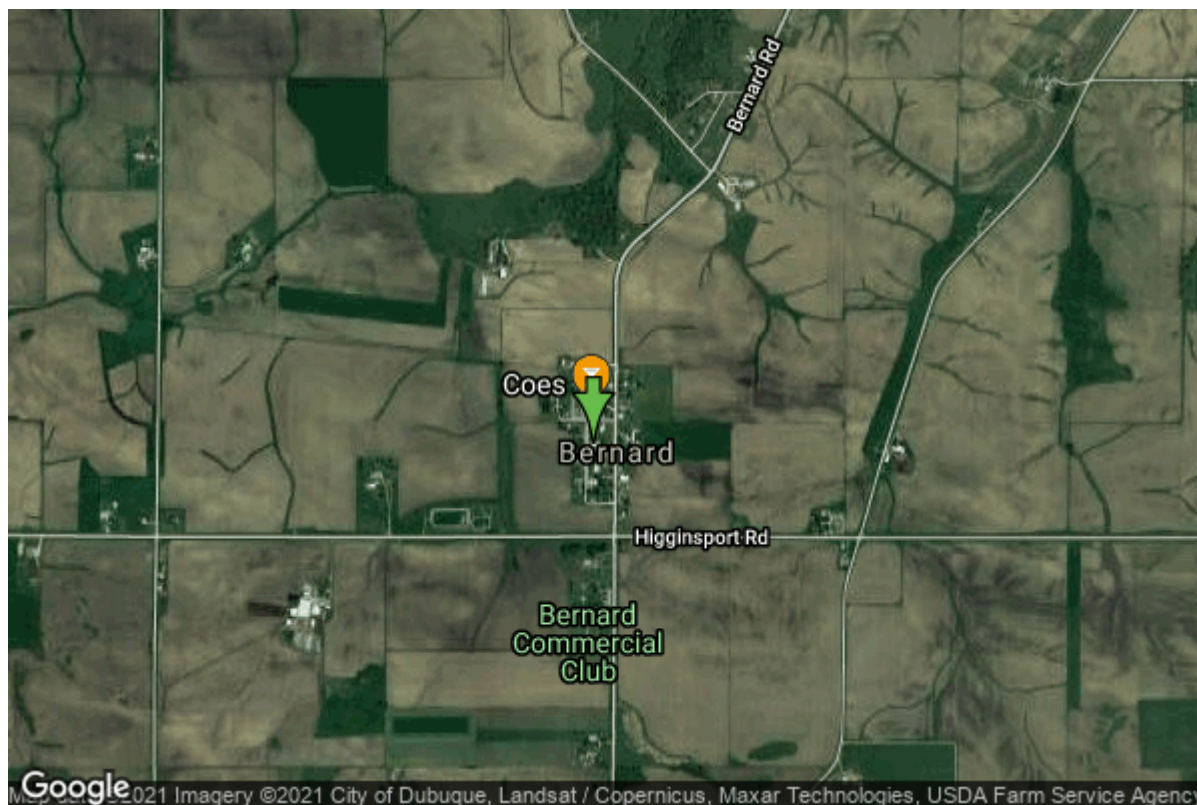


Well W#36724 Information



Date Received		State	Iowa
Owner Name	Bernard, City Of	County	Dubuque
Alt Name		Quadrangle	Bernard, Iowa
WNumber	36724	Township	T87N
PWTS ID	0	Range	R1E
PWS ID	3113001	Section	27
Storet ID	0	Quarter	SW SE NE
SDWIS ID	2409326	Latitude	42.3123570000
USGS ID	0	Longitude	-90.8305550000
Project	Source Water Protection	Accuracy	
Operator	Unknown	UTM X	678791
		UTM Y	4686737

Site Type	Drilled hole	Drilling Company	Shawver Well Co.
Well Status	Not Used	Drilling Date	08/24/1995
Field Located	No	Drilling Method	Rotary
Elevation	930 ft	Bedrock Depth	65 ft
Elevation Accuracy	Digital Elevation Model Accurate to 5 ft	Well Depth	701 ft
Landscape Position	Hillside	Total Depth	701 ft
		Well Types	Municipal, Public Supply
		Aquifers	Cambrian-Ordovician

Hole Construction Information

Date	08/24/1995	Depth	75.00 ft
Diameter	14.75 in		

Comments

Date	08/24/1995	Depth	380.00 ft
Diameter	11.88 in		
Comments			

Date	08/24/1995	Depth	668.00 ft
Diameter	6.25 in		
Comments			

Date	08/24/1995	Depth	701.00 ft
Diameter	5.00 in		
Comments			

Casing Construction Information

Date	08/24/1995	Casing Type	Steel
Start Depth	-2.00 ft	End Depth	380.00 ft
Diameter	6.37 in	Amount	382.00 ft
Comments			

Date	08/24/1995	Casing Type	Steel
Start Depth	559.00 ft	End Depth	668.00 ft
Diameter	5.04 in	Amount	109.00 ft
Comments			

Grout Construction Information

Date	08/24/1995	Grout Placement	Unknown
Grout Type	Cement	End Depth	380.00 ft
Start Depth	0.00 ft		
Comments			

Pump Construction Information

Date	08/24/1995	Pump Type	Unknown
Diameter	0.00 in	Rating	40
Depth Intake	540.00 ft		
Comments			

Log Information

Date	
Log Types	Drillers log
Prepared By	Unknown

Comments

Date

Log Types

Strip log

Prepared By

Unknown

Comments

Stratigraphy Information

System

Quaternary

Series

Group

Formation

Member

Submember

Start Depth

0.00 ft

End Depth

65.00 ft

Contact Accuracy

Penetration

Primary Lithology

Clay

Percent

85

Secondary Lithology

Till

Percent

10

Tertiary Lithology

Silt

Percent

5

Comments

System

Silurian

Series

Group

Formation

Member

Submember

Start Depth

65.00 ft

End Depth

180.00 ft

Contact Accuracy

Penetration

Primary Lithology

Dolomite

Percent

75

Secondary Lithology

Chert/Chalcedony

Percent

25

Tertiary Lithology

Percent

Comments

System

Ordovician

Series

Group

Formation

Maquoketa

Member

Submember

Start Depth

180.00 ft

End Depth

275.00 ft

Contact Accuracy

Penetration

Primary Lithology

Shale

Percent

90

Secondary Lithology

Dolomite

Percent

10

Tertiary Lithology	Unknown	Percent	0
Comments			
System	Ordovician		
Series			
Group			
Formation	Maquoketa		
Member	Elgin Limestone		
Submember			
Start Depth	275.00 ft	End Depth	345.00 ft
Contact Accuracy			
Penetration			
Primary Lithology	Dolomite	Percent	60
Secondary Lithology	Shale	Percent	40
Tertiary Lithology		Percent	
Comments			
System	Ordovician		
Series			
Group	Galena		
Formation			
Member			
Submember			
Start Depth	345.00 ft	End Depth	450.00 ft
Contact Accuracy			
Penetration			
Primary Lithology	Dolomite	Percent	100
Secondary Lithology		Percent	
Tertiary Lithology		Percent	
Comments			
System	Ordovician		
Series			
Group	Galena		
Formation	Dunleith		
Member			
Submember			
Start Depth	450.00 ft	End Depth	590.00 ft
Contact Accuracy			
Penetration			
Primary Lithology	Limestone	Percent	50
Secondary Lithology	Dolomite	Percent	25
Tertiary Lithology	Chert/Chalcedony	Percent	25
Comments			
System	Ordovician		
Series			
Group	Galena		
Formation	Decorah/Platteville Undiff.		

Member			
Submember			
Start Depth	590.00 ft	End Depth	657.00 ft
Contact Accuracy			
Penetration			
Primary Lithology	Dolomite	Percent	60
Secondary Lithology	Limestone	Percent	30
Tertiary Lithology	Shale	Percent	10
Comments			

System	Ordovician		
Series			
Group	Ancell		
Formation	Glenwood		
Member	Harmony Hill		
Submember			
Start Depth	657.00 ft	End Depth	660.00 ft
Contact Accuracy			
Penetration			
Primary Lithology	Shale	Percent	70
Secondary Lithology	Dolomite	Percent	30
Tertiary Lithology		Percent	
Comments			

System	Ordovician		
Series			
Group	Ancell		
Formation	St. Peter Sandstone		
Member	Tonti		
Submember			
Start Depth	660.00 ft	End Depth	701.00 ft
Contact Accuracy			
Penetration			
Primary Lithology	Sandstone	Percent	97
Secondary Lithology	Dolomite	Percent	3
Tertiary Lithology	Unknown	Percent	0
Comments			

Water Production Information

Date	08/24/1995	Start Time	
Aquifer	Unknown		
Static Water Level	300.00 ft	Yield	45 gallons per minute
Pumping Water Level	540 ft	Yield Method	Unknown
Measurement	Unknown	Pump Test	Yes
Pump Method	Unknown	Duration	0 mins
Comments			

Date	08/24/1995	Start Time	01:00
Aquifer	Unknown	Yield	22 gallons per minute
Static Water Level	300.00 ft	Yield Method	Unknown
Pumping Water Level	440 ft	Pump Test	Yes
Measurement	Unknown	Duration	0 mins
Pump Method	Unknown		
Comments			

Chip Storage Information

Date	10/10/1995	Bin	
Storage	OD3-205>206	Number of Samples	135
Number of Boxes	2	Sample Gaps	205-10,280-85,330-35,43 0-35,440-45,700-701
Sample Intervals	5	Sample Bottom	700 ft
Sample Top	0 ft	Washed Bottom	700 ft
Washed Top	65 ft		
Duplicate Storage			
Comments			

<https://www.ihr.uiowa.edu/igs/geosam/well/36724/general-information>