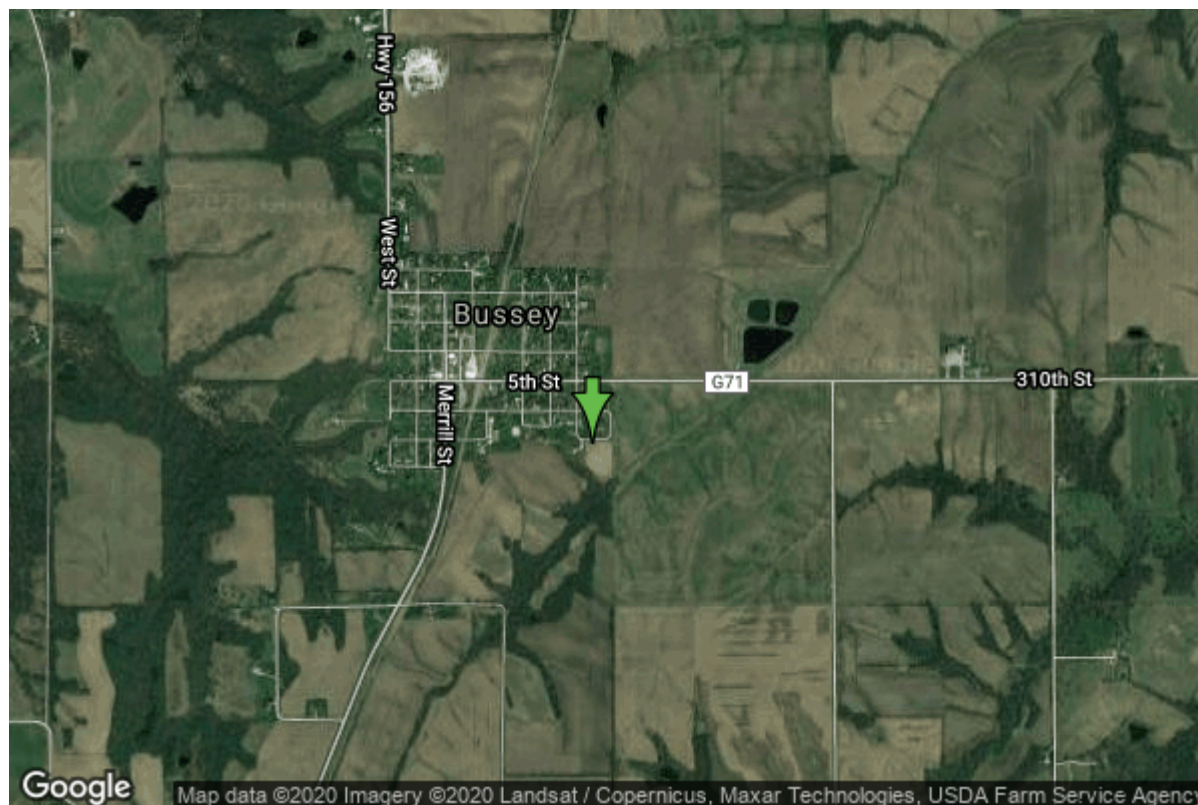


Well W#368 Information



Date Received		State	Iowa
Owner Name	Bussey, City Of	County	Marion
Alt Name		Quadrangle	Lovilia, Iowa
WNumber	368	Township	T74N
PWTS ID	0	Range	R18W
PWS ID	6309061	Section	24
Storet ID	0	Quarter	NE NW SW
SDWIS ID	0	Latitude	41.2024660000
USGS ID	0	Longitude	-92.8796290000
Project	Source Water Protection	Accuracy	
Operator	Unknown	UTM X	510092
		UTM Y	4561240

Site Type	Drilled hole	Drilling Company	Mccutcheon, Frank
Well Status	Not Used	Drilling Date	02/15/1936
Field Located	No	Drilling Method	Unknown
Elevation	840 ft	Bedrock Depth	20 ft
Elevation Accuracy	Digital Elevation Model	Well Depth	250 ft
	Accurate to 5 ft	Total Depth	284 ft
Landscape Position	Upland	Well Types	Municipal
		Aquifers	Mississippian

Log Information

Date	08/29/1947
Log Types	Strip log

Prepared By Unknown
Comments

Date
Log Types Drillers log
Prepared By Unknown
Comments

Stratigraphy Information

System Quaternary
Series
Group
Formation
Member
Submember
Start Depth 0.00 ft **End Depth** 2.00 ft
Contact Accuracy
Penetration
Primary Lithology Soil Or Fill **Percent** 100
Secondary Lithology **Percent**
Tertiary Lithology **Percent**
Comments

System Quaternary
Series
Group
Formation
Member
Submember
Start Depth 2.00 ft **End Depth** 5.00 ft
Contact Accuracy
Penetration
Primary Lithology Loess **Percent** 100
Secondary Lithology **Percent**
Tertiary Lithology **Percent**
Comments

System Quaternary
Series Pleistocene Series
Group
Formation
Member
Submember
Start Depth 5.00 ft **End Depth** 20.00 ft
Contact Accuracy
Penetration
Primary Lithology Till **Percent** 100

Secondary Lithology		Percent	
Tertiary Lithology		Percent	
Comments			
System	Pennsylvanian (Subsystem Of Carboniferous System)		
Series			
Group	Cherokee		
Formation			
Member			
Submember			
Start Depth	20.00 ft	End Depth	185.00 ft
Contact Accuracy			
Penetration			
Primary Lithology	Shale	Percent	0
Secondary Lithology	Sandstone	Percent	0
Tertiary Lithology	Coal	Percent	0
Comments			

System	Mississippian (Subsystem Of Carboniferous System)		
Series			
Group			
Formation	Pella (Ste. Genevieve)		
Member			
Submember			
Start Depth	185.00 ft	End Depth	207.00 ft
Contact Accuracy			
Penetration			
Primary Lithology	Limestone	Percent	0
Secondary Lithology	Shale	Percent	0
Tertiary Lithology		Percent	
Comments			

System	Mississippian (Subsystem Of Carboniferous System)		
Series			
Group			
Formation	St. Louis		
Member			
Submember			
Start Depth	207.00 ft	End Depth	256.00 ft
Contact Accuracy			
Penetration			
Primary Lithology	Sandstone	Percent	0
Secondary Lithology	Dolomite	Percent	0
Tertiary Lithology	Limestone	Percent	0
Comments			

System	Mississippian (Subsystem Of Carboniferous System)		
Series			
Group	Augusta		

Formation	Warsaw		
Member			
Submember			
Start Depth	256.00 ft	End Depth	281.00 ft
Contact Accuracy			
Penetration			
Primary Lithology	Limestone	Percent	0
Secondary Lithology	Sandstone	Percent	0
Tertiary Lithology	Dolomite	Percent	0
Comments			

Chip Storage Information

Date			
Storage	WC6-8,9	Bin	
Number of Boxes	2	Number of Samples	90
Sample Intervals	0	Sample Gaps	
Sample Top	0 ft	Sample Bottom	280 ft
Washed Top	0 ft	Washed Bottom	0 ft
Duplicate Storage			
Comments			

<https://www.iihr.uiowa.edu/igs/geosam/well/368/general-information>