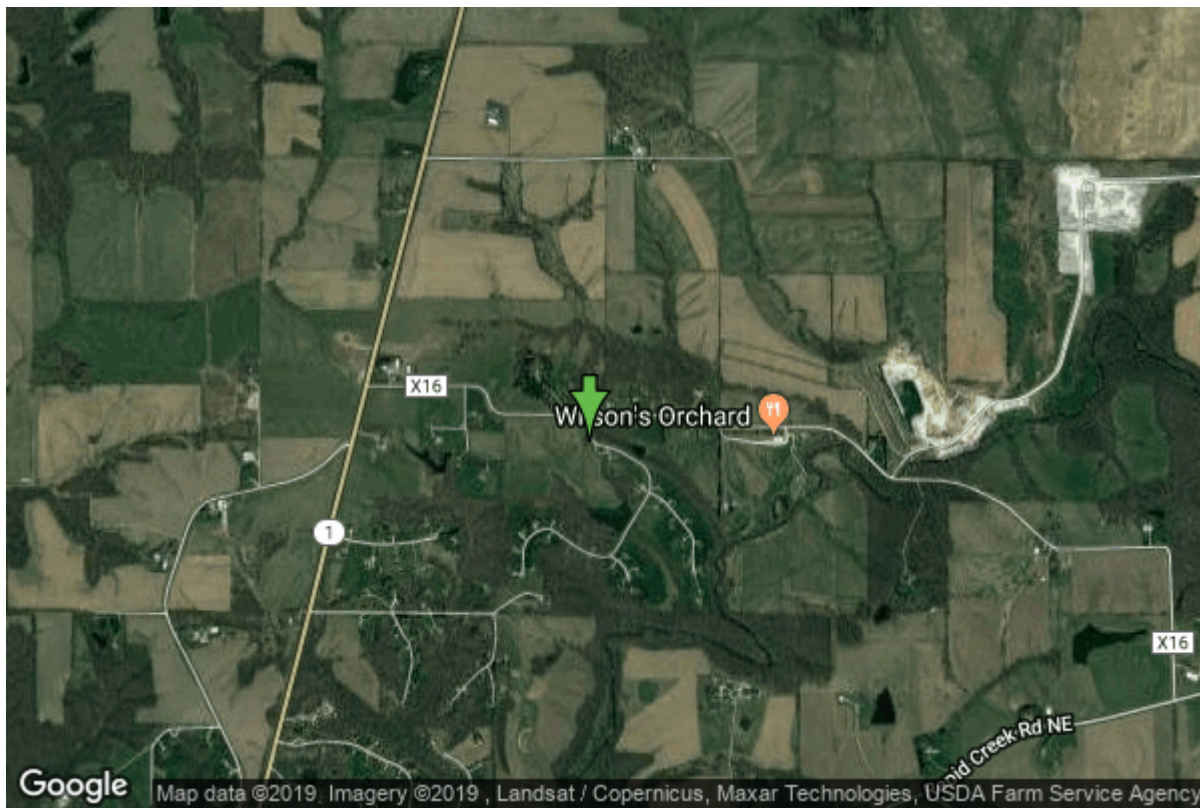


Well W#36817 Information



Date Received	09/27/1995	State	Iowa
Owner Name	Orchard View Estates	County	Johnson
Alt Name	#1	Quadrangle	Iowa City East, Iowa
WNumber	36817	Township	T80N
PWTS ID	0	Range	R5W
PWS ID	5282304	Section	19
Storet ID	0	Quarter	SE NE NW
SDWIS ID	2408454	Latitude	41.7202100000
USGS ID	0	Longitude	-91.4684300000
Project	Source Water Protection	Accuracy	
Operator	Unknown	UTM X	627397
		UTM Y	4619846

Site Type	Drilled hole	Drilling Company	Gingerich Well Co.
Well Status	Active	Drilling Date	09/16/1995
Field Located	No	Drilling Method	Rotary
Elevation	800 ft	Bedrock Depth	60 ft
Elevation Accuracy	Digital Elevation Model Accurate to 5 ft	Well Depth	487 ft
Landscape Position	Hillside	Total Depth	487 ft
		Well Types	Public Supply
		Aquifers	Silurian

Hole Construction Information

Date	09/16/1995	Depth	63.00 ft
Diameter	15.00 in		

Comments

Date	09/16/1995	Depth	235.00 ft
Diameter	13.00 in		
Comments			

Date	09/16/1995	Depth	487.00 ft
Diameter	8.00 in		
Comments			

Casing Construction Information

Date	09/16/1995	Casing Type	Steel
Start Depth	0.00 ft	End Depth	235.00 ft
Diameter	8.00 in	Amount	235.00 ft
Comments			

Grout Construction Information

Date	09/16/1995	Grout Placement	Unknown
Grout Type	Bentonite (Clay)	End Depth	235.00 ft
Start Depth	0.00 ft		
Comments			

Log Information

Date	09/16/1995
Log Types	Drillers log
Prepared By	Gingerich Well Co.
Comments	

Formation Information

Formation Color	Yellow	Formation Lithology	clay
Start Depth	0.00 ft	End Depth	60.00 ft
Comments			

Formation Color	No Color Noted	Formation Lithology	limestone
Start Depth	60.00 ft	End Depth	212.00 ft
Comments			

Formation Color	No Color Noted	Formation Lithology	dolomite
Start Depth	212.00 ft	End Depth	485.00 ft
Comments			

Formation Color	No Color Noted	Formation Lithology	shale
Start Depth	485.00 ft	End Depth	487.00 ft
Comments			

Water Production Information

Date	09/16/1995	Start Time	
Aquifer	Unknown		
Static Water Level	120.00 ft	Yield	100 gallons per minute
Pumping Water Level	220 ft	Yield Method	Estimate
Measurement	Estimate	Pump Test	Yes
Pump Method	Airlifted	Duration	0 mins
Comments			

Chip Storage Information

Date	05/23/1996		
Storage	OD3-362>363	Bin	
Number of Boxes	2	Number of Samples	98
Sample Intervals	5	Sample Gaps	
Sample Top	0 ft	Sample Bottom	487 ft
Washed Top	60 ft	Washed Bottom	487 ft
Duplicate Storage			
Comments			

<https://www.ihr.uiowa.edu/igs/geosam/well/36817/general-information>