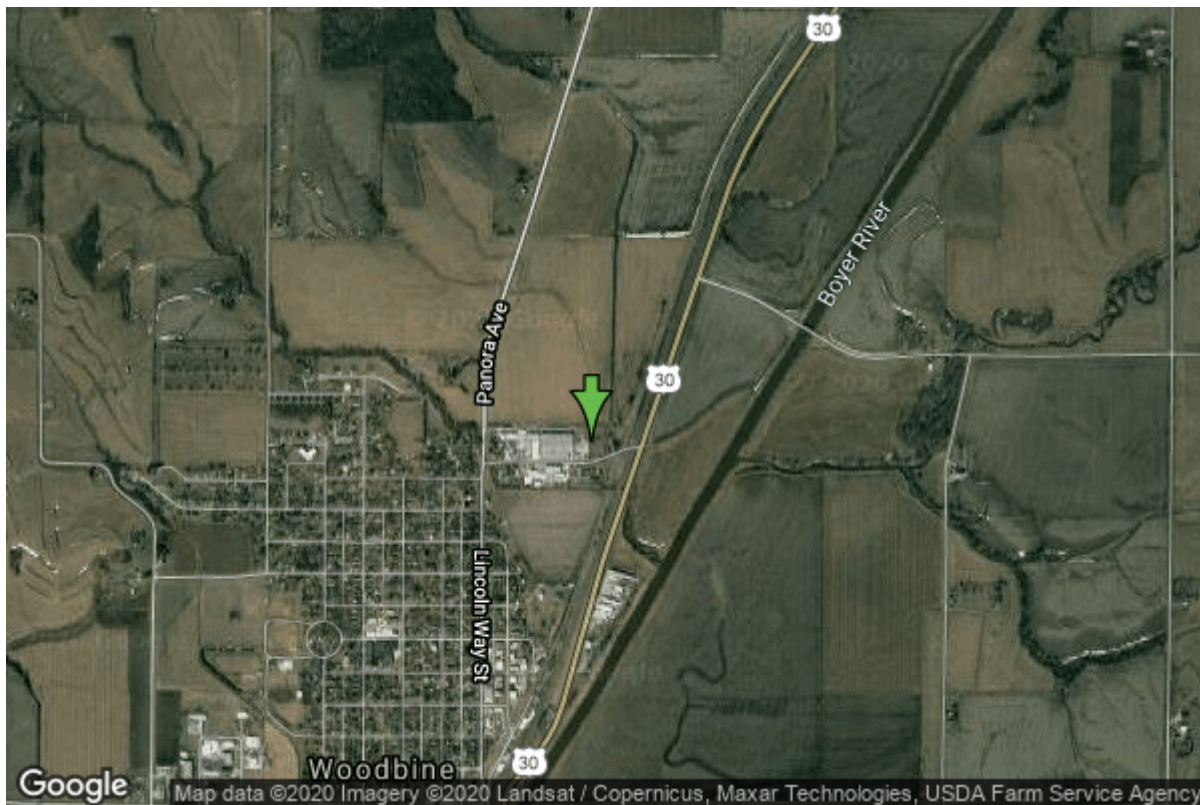


# Well W#3751 Information



<b>Date Received</b>		<b>State</b>	Iowa
<b>Owner Name</b>	Woodbine, City Of	<b>County</b>	Harrison
<b>Alt Name</b>	#2	<b>Quadrangle</b>	Woodbine, Iowa
<b>WNumber</b>	3751	<b>Township</b>	T80N
<b>PWTS ID</b>	0	<b>Range</b>	R42W
<b>PWS ID</b>	4388034	<b>Section</b>	14
<b>Storet ID</b>	0	<b>Quarter</b>	NE NE SW
<b>SDWIS ID</b>	2411799	<b>Latitude</b>	41.7443920000
<b>USGS ID</b>	0	<b>Longitude</b>	-95.6977450000
<b>Project</b>	Source Water Protection	<b>Accuracy</b>	
<b>Operator</b>	Unknown	<b>UTM X</b>	275678
		<b>UTM Y</b>	4624915

<b>Site Type</b>	Drilled hole	<b>Drilling Company</b>	Rasmussen, Carrol
<b>Well Status</b>	Active	<b>Drilling Date</b>	05/21/1949
<b>Field Located</b>	No	<b>Drilling Method</b>	Unknown
<b>Elevation</b>	1060 ft	<b>Bedrock Depth</b>	38 ft
<b>Elevation Accuracy</b>	Digital Elevation Model Accurate to 5 ft	<b>Well Depth</b>	92 ft
<b>Landscape Position</b>	Unknown	<b>Total Depth</b>	92 ft
		<b>Well Types</b>	Municipal, Public Supply
		<b>Aquifers</b>	Dakota/Cretaceous

## Log Information

<b>Date</b>	09/09/1949
<b>Log Types</b>	Strip log

**Prepared By** Huntington, George C.  
**Comments**

---

**Date**  
**Log Types** Drillers log  
**Prepared By** Unknown  
**Comments**

## Stratigraphy Information

**System** Quaternary  
**Series**  
**Group**  
**Formation**  
**Member**  
**Submember**  
**Start Depth** 0.00 ft **End Depth** 14.00 ft  
**Contact Accuracy**  
**Penetration**  
**Primary Lithology** Unknown **Percent** 0  
**Secondary Lithology** Unknown **Percent** 0  
**Tertiary Lithology** Unknown **Percent** 0  
**Comments**

---

**System** Quaternary  
**Series** Pleistocene Series  
**Group**  
**Formation**  
**Member**  
**Submember**  
**Start Depth** 14.00 ft **End Depth** 30.00 ft  
**Contact Accuracy**  
**Penetration**  
**Primary Lithology** Paleosol **Percent** 100  
**Secondary Lithology** Unknown **Percent** 0  
**Tertiary Lithology** Unknown **Percent** 0  
**Comments**

---

**System** Quaternary  
**Series** Pleistocene Series  
**Group**  
**Formation**  
**Member**  
**Submember**  
**Start Depth** 30.00 ft **End Depth** 38.00 ft  
**Contact Accuracy**  
**Penetration**  
**Primary Lithology** Sand And Gravel **Percent** 100

<b>Secondary Lithology</b>		<b>Percent</b>	
<b>Tertiary Lithology</b>		<b>Percent</b>	
<b>Comments</b>			
<hr/>			
<b>System</b>	Cretaceous		
<b>Series</b>			
<b>Group</b>	Fort Benton ("Lower Colorado ")		
<b>Formation</b>	Dakota		
<b>Member</b>	Nishnabotna		
<b>Submember</b>			
<b>Start Depth</b>	38.00 ft	<b>End Depth</b>	90.00 ft
<b>Contact Accuracy</b>			
<b>Penetration</b>			
<b>Primary Lithology</b>	Sandstone	<b>Percent</b>	100
<b>Secondary Lithology</b>		<b>Percent</b>	
<b>Tertiary Lithology</b>		<b>Percent</b>	
<b>Comments</b>			

## Chip Storage Information

<b>Date</b>	07/19/1949		
<b>Storage</b>	CF4-1	<b>Bin</b>	
<b>Number of Boxes</b>	1	<b>Number of Samples</b>	10
<b>Sample Intervals</b>	0	<b>Sample Gaps</b>	0-14, 32-34, 35-37, 40-66
<b>Sample Top</b>	14 ft	<b>Sample Bottom</b>	90 ft
<b>Washed Top</b>	38 ft	<b>Washed Bottom</b>	90 ft
<b>Duplicate Storage</b>			
<b>Comments</b>			

<https://www.iuhr.uiowa.edu/igs/geosam/well/3751/general-information>