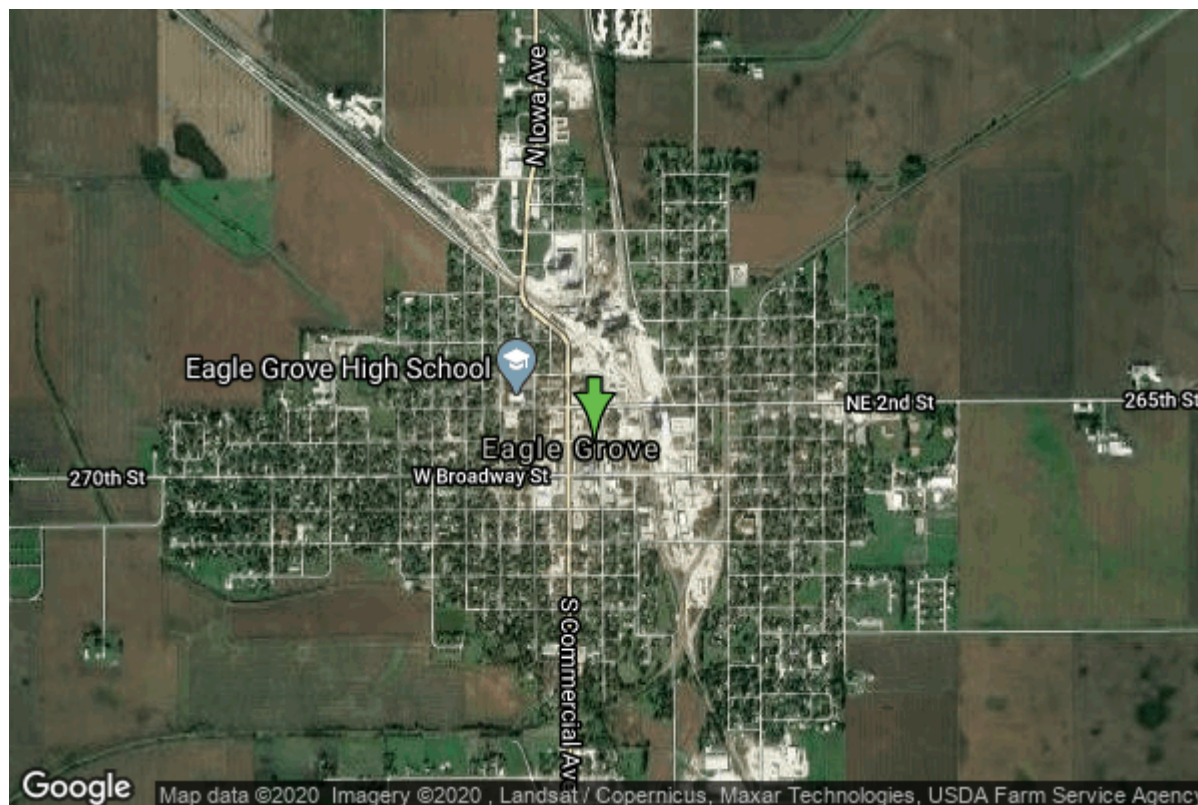


# Well W#39555 Information



<b>Date Received</b>		<b>State</b>	Iowa
<b>Owner Name</b>	Eagle Grove, City Of	<b>County</b>	Wright
<b>Alt Name</b>	WEST	<b>Quadrangle</b>	Eagle Grove, Iowa
<b>WNumber</b>	39555	<b>Township</b>	T91N
<b>PWTS ID</b>	0	<b>Range</b>	R26W
<b>PWS ID</b>	9926096	<b>Section</b>	27
<b>Storet ID</b>	31990001	<b>Quarter</b>	SW NE NE
<b>SDWIS ID</b>	2409620	<b>Latitude</b>	42.6650800000
<b>USGS ID</b>	423954093535801	<b>Longitude</b>	-93.9027100000
<b>Project</b>	Source Water Protection	<b>Accuracy</b>	
<b>Operator</b>	Unknown	<b>UTM X</b>	426023
		<b>UTM Y</b>	4724019

<b>Site Type</b>	Drilled hole	<b>Drilling Company</b>	Layne Western - Ia.
<b>Well Status</b>	Standby	<b>Drilling Date</b>	07/10/1952
<b>Field Located</b>	No	<b>Drilling Method</b>	Unknown
<b>Elevation</b>	1115 ft	<b>Bedrock Depth</b>	0 ft
<b>Elevation Accuracy</b>	Digital Elevation Model Accurate to 5 ft	<b>Well Depth</b>	70 ft
<b>Landscape Position</b>	Level Surface	<b>Total Depth</b>	71 ft
		<b>Well Types</b>	Municipal, Public Supply
		<b>Aquifers</b>	Pleistocene

## Hole Construction Information

<b>Date</b>	07/10/1952	<b>Depth</b>	70.80 ft
<b>Diameter</b>	18.00 in		

## Comments

# Casing Construction Information

Date	07/10/1952	Casing Type	Unknown
Start Depth	0.00 ft	End Depth	55.00 ft
Diameter	18.00 in	Amount	0.00 ft
Comments			

# Screen Construction Information

Date	07/10/1952	Slot Size	0.00
Screen Type	Unknown	End Depth	70.00 ft
Start Depth	55.00 ft	Amount	0 ft
Diameter	18.00 in		
Comments			

# Gravel Pack Construction Information

Date	07/10/1952	Slot Size	
Gravel Pack Type	Unknown	End Depth	70.00 ft
Start Depth	52.00 ft		
Comments			

# Pump Construction Information

Date	07/10/1952	Pump Type	Turbine
Diameter	0.00 in	Rating	300
Depth Intake	40.00 ft		
Comments			

# Log Information

Date	
Log Types	Drillers log
Prepared By	Unknown
Comments	

# Formation Information

Formation Color	No Color Noted	Formation Lithology	soil or fill
Start Depth	0.00 ft	End Depth	4.00 ft
Comments			

<b>Formation Color</b>	No Color Noted	<b>Formation Lithology</b>	sandy clay
<b>Start Depth</b>	4.00 ft	<b>End Depth</b>	9.00 ft
<b>Comments</b>			
<b>Formation Color</b>	Gray	<b>Formation Lithology</b>	sandy clay
<b>Start Depth</b>	9.00 ft	<b>End Depth</b>	43.00 ft
<b>Comments</b>			
<b>Formation Color</b>	Gray	<b>Formation Lithology</b>	sandy clay
<b>Start Depth</b>	43.00 ft	<b>End Depth</b>	58.00 ft
<b>Comments</b>			
<b>Formation Color</b>	Gray	<b>Formation Lithology</b>	sand and gravel
<b>Start Depth</b>	58.00 ft	<b>End Depth</b>	65.00 ft
<b>Comments</b>			
<b>Formation Color</b>	Gray	<b>Formation Lithology</b>	sand and gravel
<b>Start Depth</b>	65.00 ft	<b>End Depth</b>	68.00 ft
<b>Comments</b>			
<b>Formation Color</b>	Gray	<b>Formation Lithology</b>	sand and gravel
<b>Start Depth</b>	68.00 ft	<b>End Depth</b>	70.50 ft
<b>Comments</b>			
<b>Formation Color</b>	Gray	<b>Formation Lithology</b>	clay
<b>Start Depth</b>	70.50 ft	<b>End Depth</b>	70.80 ft
<b>Comments</b>			

## Water Production Information

<b>Date</b>	01/01/1975	<b>Start Time</b>	
<b>Aquifer</b>	Unknown	<b>Yield</b>	246 gallons per minute
<b>Static Water Level</b>	22.00 ft	<b>Yield Method</b>	Unknown
<b>Pumping Water Level</b>	50 ft	<b>Pump Test</b>	Yes
<b>Measurement</b>	Unknown	<b>Duration</b>	800 mins
<b>Pump Method</b>	Unknown		
<b>Comments</b>			
<b>Date</b>	07/10/1952	<b>Start Time</b>	
<b>Aquifer</b>	Unknown	<b>Yield</b>	400 gallons per minute
<b>Static Water Level</b>	23.00 ft	<b>Yield Method</b>	Unknown
<b>Pumping Water Level</b>	36 ft	<b>Pump Test</b>	Yes
<b>Measurement</b>	Unknown	<b>Duration</b>	0 mins
<b>Pump Method</b>	Unknown		
<b>Comments</b>			

---

<b>Date</b>	01/01/1952	<b>Start Time</b>	
<b>Aquifer</b>	Unknown		
<b>Static Water Level</b>	23.00 ft	<b>Yield</b>	400 gallons per minute
<b>Pumping Water Level</b>	36 ft	<b>Yield Method</b>	Unknown
<b>Measurement</b>	Unknown	<b>Pump Test</b>	Yes
<b>Pump Method</b>	Unknown	<b>Duration</b>	0 mins
<b>Comments</b>			

<https://www.iihr.uiowa.edu/igs/geosam/well/39555/general-information>