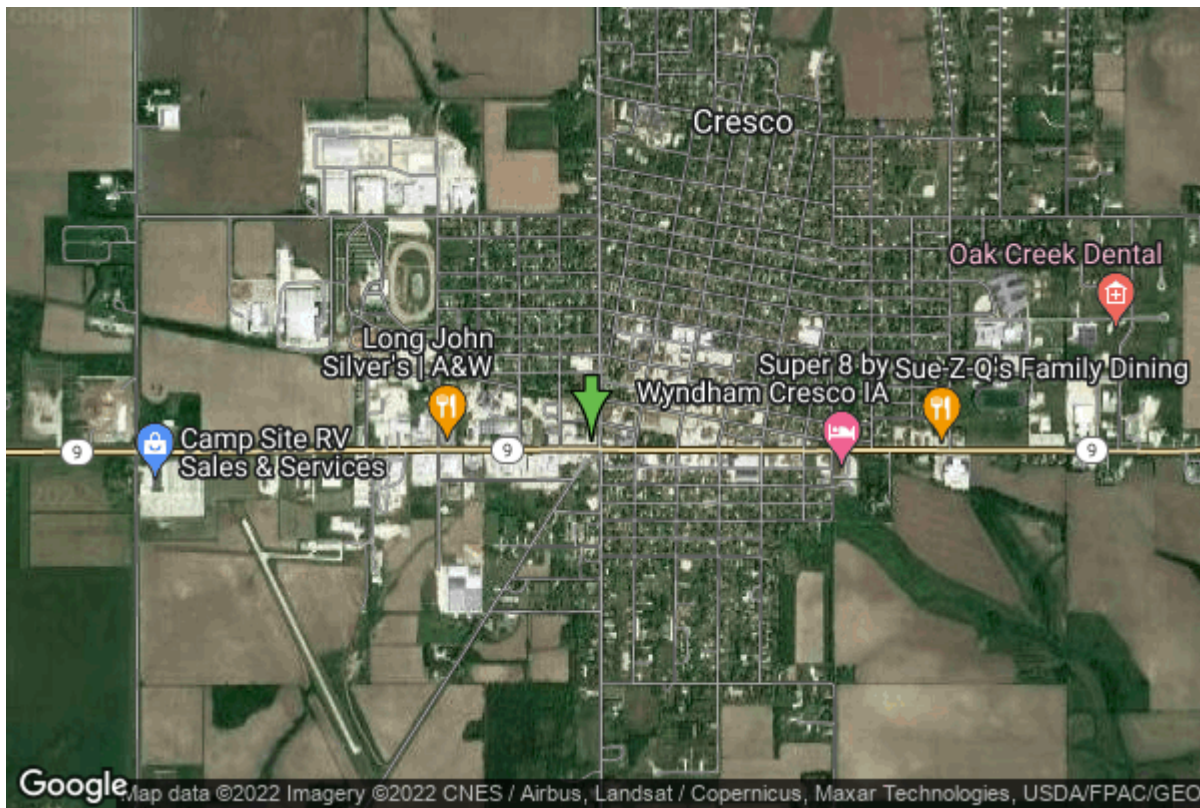


# Well W#4 Information



<b>Date Received</b>		<b>State</b>	Iowa
<b>Owner Name</b>	Cresco, City Of	<b>County</b>	Howard
<b>Alt Name</b>	# NORTH	<b>Quadrangle</b>	Cresco Se, Iowa
<b>WNumber</b>	4	<b>Township</b>	T99N
<b>PWTS ID</b>	0	<b>Range</b>	R11W
<b>PWS ID</b>	4515087	<b>Section</b>	23
<b>Storet ID</b>	0	<b>Quarter</b>	SW SW SW
<b>SDWIS ID</b>	2412180	<b>Latitude</b>	43.3713570000
<b>USGS ID</b>	0	<b>Longitude</b>	-92.1199200000
<b>Project</b>	Source Water Protection	<b>Accuracy</b>	
<b>Operator</b>	Unknown	<b>UTM X</b>	571301
		<b>UTM Y</b>	4802431

<b>Site Type</b>	Drilled hole	<b>Drilling Company</b>	Sewell Well
<b>Well Status</b>	Not Used	<b>Drilling Date</b>	10/14/1924
<b>Field Located</b>	No	<b>Drilling Method</b>	Cable
<b>Elevation</b>	1299 ft	<b>Bedrock Depth</b>	30 ft
<b>Elevation Accuracy</b>	Digital Elevation Model Accurate to 5 ft	<b>Well Depth</b>	670 ft
<b>Landscape Position</b>	Upland	<b>Total Depth</b>	670 ft
		<b>Well Types</b>	Municipal, Public Supply
		<b>Aquifers</b>	Ordovician

# Hole Construction Information

<b>Date</b>	10/14/1924	<b>Depth</b>	81.80 ft
<b>Diameter</b>	0.00 in		

## Comments

---

Date	10/14/1924	Depth	258.80 ft
Diameter	19.00 in		
Comments			

---

Date	10/14/1924	Depth	294.00 ft
Diameter	15.25 in		
Comments			

---

Date	10/14/1924	Depth	670.00 ft
Diameter	12.25 in		
Comments			

## Casing Construction Information

Date	10/14/1924	Casing Type	Steel
Start Depth	0.00 ft	End Depth	81.80 ft
Diameter	19.50 in	Amount	0.00 ft
Comments			

---

Date	10/14/1924	Casing Type	Steel
Start Depth	81.80 ft	End Depth	258.80 ft
Diameter	15.50 in	Amount	177.00 ft
Comments			

---

Date	10/14/1924	Casing Type	Steel
Start Depth	258.00 ft	End Depth	597.00 ft
Diameter	12.50 in	Amount	339.00 ft
Comments			

## Log Information

Date	07/01/1947
Log Types	Strip log
Prepared By	Agnew, Alan F.
Comments	

---

Date	04/01/1939
Log Types	Strip log
Prepared By	Carmody, R.A.
Comments	

---

Date	
Log Types	Drillers log
Prepared By	Unknown

Comments

# Stratigraphy Information

**System** Quaternary  
**Series**  
**Group**  
**Formation**  
**Member**  
**Submember**  
**Start Depth** 0.00 ft **End Depth** 30.00 ft  
**Contact Accuracy**  
**Penetration**  
**Primary Lithology** **Percent**  
**Secondary Lithology** **Percent**  
**Tertiary Lithology** **Percent**  
**Comments**

---

**System** Devonian  
**Series**  
**Group** Cedar Valley  
**Formation** Little Cedar  
**Member** Bassett  
**Submember**  
**Start Depth** 30.00 ft **End Depth** 70.00 ft  
**Contact Accuracy**  
**Penetration**  
**Primary Lithology** Limestone **Percent** 100  
**Secondary Lithology** **Percent**  
**Tertiary Lithology** **Percent**  
**Comments**

---

**System** Devonian  
**Series**  
**Group** Wapsipinicon  
**Formation** Pinicon Ridge  
**Member**  
**Submember**  
**Start Depth** 70.00 ft **End Depth** 100.00 ft  
**Contact Accuracy**  
**Penetration**  
**Primary Lithology** Dolomite **Percent** 0  
**Secondary Lithology** Sandstone **Percent** 0  
**Tertiary Lithology** Chert/Chalcedony **Percent** 0  
**Comments**

---

**System** Devonian  
**Series**

<b>Group</b>	Wapsipinicon		
<b>Formation</b>	Spillville		
<b>Member</b>			
<b>Submember</b>			
<b>Start Depth</b>	100.00 ft	<b>End Depth</b>	150.00 ft
<b>Contact Accuracy</b>			
<b>Penetration</b>			
<b>Primary Lithology</b>	Dolomite	<b>Percent</b>	100
<b>Secondary Lithology</b>		<b>Percent</b>	
<b>Tertiary Lithology</b>		<b>Percent</b>	
<b>Comments</b>			
<hr/>			
<b>System</b>	Devonian		
<b>Series</b>			
<b>Group</b>	Wapsipinicon		
<b>Formation</b>	Spillville		
<b>Member</b>	Lake Meyer		
<b>Submember</b>			
<b>Start Depth</b>	150.00 ft	<b>End Depth</b>	180.00 ft
<b>Contact Accuracy</b>			
<b>Penetration</b>			
<b>Primary Lithology</b>	Sandstone	<b>Percent</b>	0
<b>Secondary Lithology</b>	Dolomite	<b>Percent</b>	0
<b>Tertiary Lithology</b>		<b>Percent</b>	
<b>Comments</b>			
<hr/>			
<b>System</b>	Ordovician		
<b>Series</b>			
<b>Group</b>			
<b>Formation</b>	Maquoketa		
<b>Member</b>			
<b>Submember</b>			
<b>Start Depth</b>	180.00 ft	<b>End Depth</b>	290.00 ft
<b>Contact Accuracy</b>			
<b>Penetration</b>			
<b>Primary Lithology</b>	Limestone	<b>Percent</b>	0
<b>Secondary Lithology</b>	Dolomite	<b>Percent</b>	0
<b>Tertiary Lithology</b>	Chert/Chalcedony	<b>Percent</b>	0
<b>Comments</b>			
<hr/>			
<b>System</b>	Ordovician		
<b>Series</b>			
<b>Group</b>	Galena		
<b>Formation</b>	Dubuque		
<b>Member</b>			
<b>Submember</b>			
<b>Start Depth</b>	290.00 ft	<b>End Depth</b>	320.00 ft
<b>Contact Accuracy</b>			
<b>Penetration</b>			

<b>Primary Lithology</b>	Limestone	<b>Percent</b>	100
<b>Secondary Lithology</b>		<b>Percent</b>	
<b>Tertiary Lithology</b>		<b>Percent</b>	
<b>Comments</b>			

---

<b>System</b>	Ordovician		
<b>Series</b>			
<b>Group</b>	Galena		
<b>Formation</b>	Wise Lake		
<b>Member</b>			
<b>Submember</b>			
<b>Start Depth</b>	320.00 ft	<b>End Depth</b>	370.00 ft
<b>Contact Accuracy</b>			
<b>Penetration</b>			
<b>Primary Lithology</b>	Ls/Dol Mixed	<b>Percent</b>	100
<b>Secondary Lithology</b>		<b>Percent</b>	
<b>Tertiary Lithology</b>		<b>Percent</b>	
<b>Comments</b>			

---

<b>System</b>	Ordovician		
<b>Series</b>			
<b>Group</b>	Galena		
<b>Formation</b>	Dunleith		
<b>Member</b>			
<b>Submember</b>			
<b>Start Depth</b>	370.00 ft	<b>End Depth</b>	510.00 ft
<b>Contact Accuracy</b>			
<b>Penetration</b>			
<b>Primary Lithology</b>	Limestone	<b>Percent</b>	0
<b>Secondary Lithology</b>	Chert/Chalcedony	<b>Percent</b>	0
<b>Tertiary Lithology</b>		<b>Percent</b>	
<b>Comments</b>			

---

<b>System</b>	Ordovician		
<b>Series</b>			
<b>Group</b>	Galena		
<b>Formation</b>	Decorah		
<b>Member</b>			
<b>Submember</b>			
<b>Start Depth</b>	510.00 ft	<b>End Depth</b>	560.00 ft
<b>Contact Accuracy</b>			
<b>Penetration</b>			
<b>Primary Lithology</b>	Shale	<b>Percent</b>	0
<b>Secondary Lithology</b>	Limestone	<b>Percent</b>	0
<b>Tertiary Lithology</b>		<b>Percent</b>	
<b>Comments</b>			

---

<b>System</b>	Ordovician		
<b>Series</b>			

<b>Group</b>	Galena		
<b>Formation</b>	Platteville		
<b>Member</b>			
<b>Submember</b>			
<b>Start Depth</b>	560.00 ft	<b>End Depth</b>	582.00 ft
<b>Contact Accuracy</b>			
<b>Penetration</b>			
<b>Primary Lithology</b>	Limestone	<b>Percent</b>	0
<b>Secondary Lithology</b>	Shale	<b>Percent</b>	0
<b>Tertiary Lithology</b>		<b>Percent</b>	
<b>Comments</b>			

---

<b>System</b>	Ordovician		
<b>Series</b>			
<b>Group</b>	Ancell		
<b>Formation</b>	Glenwood		
<b>Member</b>			
<b>Submember</b>			
<b>Start Depth</b>	582.00 ft	<b>End Depth</b>	587.00 ft
<b>Contact Accuracy</b>			
<b>Penetration</b>			
<b>Primary Lithology</b>	Shale	<b>Percent</b>	100
<b>Secondary Lithology</b>		<b>Percent</b>	
<b>Tertiary Lithology</b>		<b>Percent</b>	
<b>Comments</b>			

---

<b>System</b>	Ordovician		
<b>Series</b>			
<b>Group</b>	Ancell		
<b>Formation</b>	St. Peter Sandstone		
<b>Member</b>			
<b>Submember</b>			
<b>Start Depth</b>	587.00 ft	<b>End Depth</b>	665.00 ft
<b>Contact Accuracy</b>			
<b>Penetration</b>			
<b>Primary Lithology</b>	Sandstone	<b>Percent</b>	100
<b>Secondary Lithology</b>		<b>Percent</b>	
<b>Tertiary Lithology</b>		<b>Percent</b>	
<b>Comments</b>			

---

<b>System</b>	Ordovician		
<b>Series</b>			
<b>Group</b>	Prairie Du Chien		
<b>Formation</b>	Shakopee		
<b>Member</b>			
<b>Submember</b>			
<b>Start Depth</b>	665.00 ft	<b>End Depth</b>	670.00 ft
<b>Contact Accuracy</b>			
<b>Penetration</b>			

<b>Primary Lithology</b>	Dolomite	<b>Percent</b>	100
<b>Secondary Lithology</b>		<b>Percent</b>	
<b>Tertiary Lithology</b>		<b>Percent</b>	
<b>Comments</b>			

## Water Production Information

<b>Date</b>	01/01/1943	<b>Start Time</b>	
<b>Aquifer</b>	Unknown		
<b>Static Water Level</b>	172.00 ft	<b>Yield</b>	224 gallons per minute
<b>Pumping Water Level</b>	248 ft	<b>Yield Method</b>	Unknown
<b>Measurement</b>	Unknown	<b>Pump Test</b>	Yes
<b>Pump Method</b>	Unknown	<b>Duration</b>	0 mins
<b>Comments</b>			

---

<b>Date</b>	10/14/1924	<b>Start Time</b>	
<b>Aquifer</b>	Unknown		
<b>Static Water Level</b>	151.00 ft	<b>Yield</b>	250 gallons per minute
<b>Pumping Water Level</b>	200 ft	<b>Yield Method</b>	Unknown
<b>Measurement</b>	Electric Line	<b>Pump Test</b>	Yes
<b>Pump Method</b>	Pumped	<b>Duration</b>	1600 mins
<b>Comments</b>			

## Chip Storage Information

<b>Date</b>		<b>Bin</b>	
<b>Storage</b>	WA1-4	<b>Number of Samples</b>	66
<b>Number of Boxes</b>	1	<b>Sample Gaps</b>	
<b>Sample Intervals</b>	0	<b>Sample Bottom</b>	670 ft
<b>Sample Top</b>	0 ft	<b>Washed Bottom</b>	0 ft
<b>Washed Top</b>	0 ft		
<b>Duplicate Storage</b>			
<b>Comments</b>			

<https://www.iihr.uiowa.edu/igs/geosam/well/4/general-information>