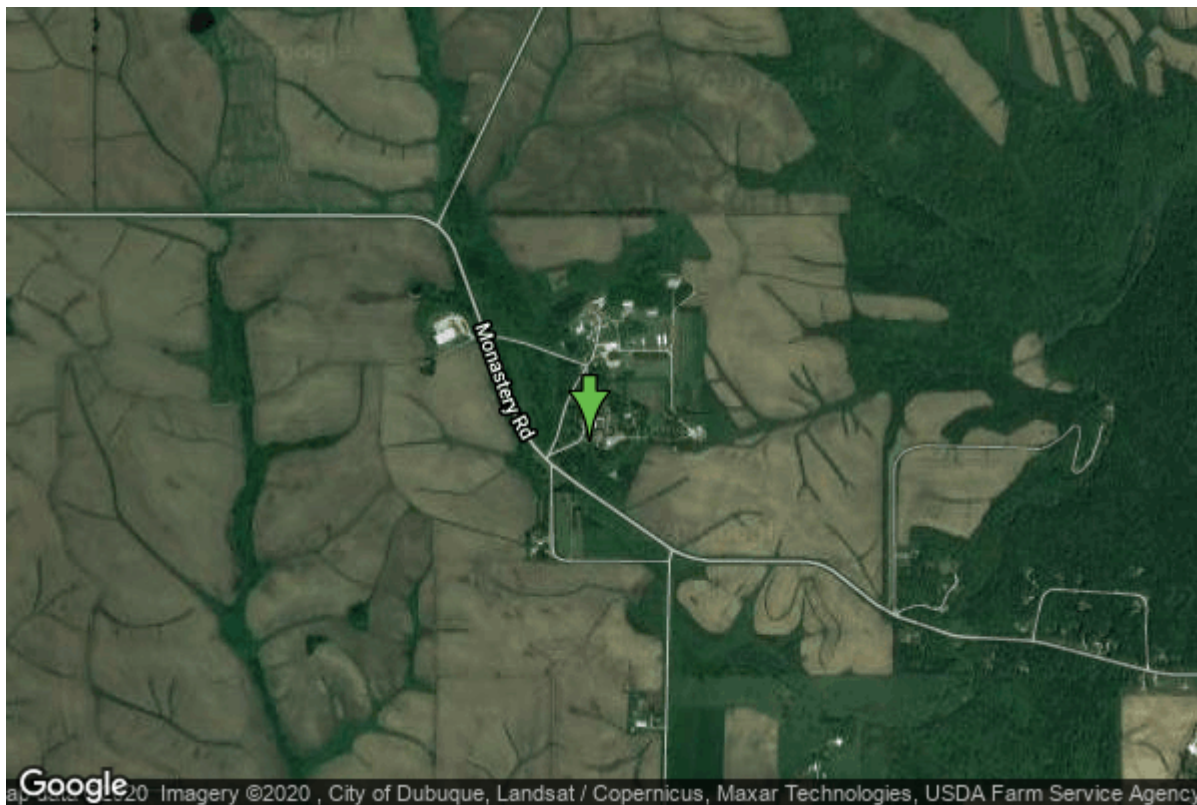


Well W#4321 Information



Date Received		State	Iowa
Owner Name	Corporation Of New Melleray	County	Dubuque
Alt Name		Quadrangle	Peosta, Iowa
WNumber	4321	Township	T88N
PWTS ID	0	Range	R1E
PWS ID	3100899	Section	35
Storet ID	0	Quarter	SE NW NW
SDWIS ID	2410809	Latitude	42.3893660000
USGS ID	0	Longitude	-90.8084550000
Project	Source Water Protection	Accuracy	
Operator	Unknown	UTM X	680392
		UTM Y	4695335

Site Type	Drilled hole	Drilling Company	Varner Well Co.
Well Status	Active	Drilling Date	02/03/1950
Field Located	No	Drilling Method	Unknown
Elevation	1011 ft	Bedrock Depth	23 ft
Elevation Accuracy	Digital Elevation Model Accurate to 5 ft	Well Depth	1501 ft
Landscape Position	Hillside	Total Depth	1501 ft
		Well Types	Public Supply
		Aquifers	Cambrian-Ordovician

Hole Construction Information

Date	02/03/1950	Depth	308.00 ft
Diameter	19.00 in		

Comments

Date	02/03/1950	Depth	1319.00 ft
Diameter	15.00 in		
Comments			

Date	02/03/1950	Depth	1501.00 ft
Diameter	12.00 in		
Comments			

Casing Construction Information

Date	02/03/1950	Casing Type	Steel
Start Depth	0.00 ft	End Depth	24.00 ft
Diameter	20.00 in	Amount	24.00 ft
Comments			

Date	02/03/1950	Casing Type	Steel
Start Depth	181.00 ft	End Depth	308.00 ft
Diameter	16.00 in	Amount	127.00 ft
Comments			

Date	02/03/1950	Casing Type	Steel
Start Depth	1234.00 ft	End Depth	1319.00 ft
Diameter	12.00 in	Amount	85.00 ft
Comments			

Log Information

Date	09/09/1951
Log Types	Strip log
Prepared By	Northup, Richard Cox
Comments	

Date	02/03/1950
Log Types	Drillers log
Prepared By	Varner Well Co.
Comments	

Stratigraphy Information

System	Silurian
Series	
Group	
Formation	Hopkinton
Member	

Submember			
Start Depth	0.00 ft	End Depth	70.00 ft
Contact Accuracy			
Penetration			
Primary Lithology	Dolomite	Percent	0
Secondary Lithology	Chert/Chalcedony	Percent	0
Tertiary Lithology		Percent	
Comments			

System	Silurian		
Series			
Group			
Formation	Blanding		
Member			
Submember			
Start Depth	70.00 ft	End Depth	110.00 ft
Contact Accuracy			
Penetration			
Primary Lithology	Dolomite	Percent	0
Secondary Lithology	Chert/Chalcedony	Percent	0
Tertiary Lithology		Percent	
Comments			

System	Silurian		
Series			
Group			
Formation	Tete Des Morts		
Member			
Submember			
Start Depth	110.00 ft	End Depth	145.00 ft
Contact Accuracy			
Penetration			
Primary Lithology	Dolomite	Percent	0
Secondary Lithology	Chert/Chalcedony	Percent	0
Tertiary Lithology		Percent	
Comments			

System	Silurian		
Series			
Group			
Formation	Mosalem		
Member			
Submember			
Start Depth	145.00 ft	End Depth	180.00 ft
Contact Accuracy			
Penetration			
Primary Lithology	Dolomite	Percent	0
Secondary Lithology	Sandstone	Percent	0
Tertiary Lithology	Chert/Chalcedony	Percent	0

Comments

System Ordovician
Series
Group
Formation Maquoketa
Member
Submember
Start Depth 180.00 ft **End Depth** 300.00 ft
Contact Accuracy
Penetration
Primary Lithology Shale **Percent** 0
Secondary Lithology Dolomite **Percent** 0
Tertiary Lithology **Percent**
Comments

System Ordovician
Series
Group
Formation Maquoketa
Member Elgin Limestone
Submember
Start Depth 300.00 ft **End Depth** 345.00 ft
Contact Accuracy
Penetration
Primary Lithology Dolomite **Percent** 0
Secondary Lithology Shale **Percent** 0
Tertiary Lithology **Percent**
Comments

System Ordovician
Series
Group Galena
Formation Dubuque
Member
Submember
Start Depth 345.00 ft **End Depth** 395.00 ft
Contact Accuracy
Penetration
Primary Lithology Dolomite **Percent** 100
Secondary Lithology **Percent**
Tertiary Lithology **Percent**
Comments

System Ordovician
Series
Group Galena
Formation Wise Lake
Member

Submember			
Start Depth	395.00 ft	End Depth	460.00 ft
Contact Accuracy			
Penetration			
Primary Lithology	Dolomite	Percent	100
Secondary Lithology		Percent	
Tertiary Lithology		Percent	
Comments			
<hr/>			
System	Ordovician		
Series			
Group	Galena		
Formation	Dunleith		
Member			
Submember			
Start Depth	460.00 ft	End Depth	580.00 ft
Contact Accuracy			
Penetration			
Primary Lithology	Dolomite	Percent	0
Secondary Lithology	Chert/Chalcedony	Percent	0
Tertiary Lithology	Limestone	Percent	0
Comments			
<hr/>			
System	Ordovician		
Series			
Group	Galena		
Formation	Decorah		
Member			
Submember			
Start Depth	580.00 ft	End Depth	625.00 ft
Contact Accuracy			
Penetration			
Primary Lithology	Limestone	Percent	0
Secondary Lithology	Shale	Percent	0
Tertiary Lithology		Percent	
Comments			
<hr/>			
System	Ordovician		
Series			
Group	Galena		
Formation	Platteville		
Member			
Submember			
Start Depth	625.00 ft	End Depth	670.00 ft
Contact Accuracy			
Penetration			
Primary Lithology	Limestone	Percent	0
Secondary Lithology	Dolomite	Percent	0
Tertiary Lithology		Percent	

Comments

System	Ordovician		
Series			
Group	Ancell		
Formation	Glenwood		
Member			
Submember			
Start Depth	670.00 ft	End Depth	675.00 ft
Contact Accuracy			
Penetration			
Primary Lithology	Shale	Percent	100
Secondary Lithology		Percent	
Tertiary Lithology		Percent	
Comments			

System	Ordovician		
Series			
Group	Ancell		
Formation	St. Peter Sandstone		
Member			
Submember			
Start Depth	675.00 ft	End Depth	730.00 ft
Contact Accuracy			
Penetration			
Primary Lithology	Sandstone	Percent	100
Secondary Lithology		Percent	
Tertiary Lithology		Percent	
Comments			

System	Ordovician		
Series			
Group	Prairie Du Chien		
Formation	Shakopee		
Member			
Submember			
Start Depth	730.00 ft	End Depth	850.00 ft
Contact Accuracy			
Penetration			
Primary Lithology	Dolomite	Percent	0
Secondary Lithology	Sandstone	Percent	0
Tertiary Lithology	Shale	Percent	0
Comments			

System	Ordovician		
Series			
Group	Prairie Du Chien		
Formation	Oneota		
Member			

Submember			
Start Depth	850.00 ft	End Depth	1005.00 ft
Contact Accuracy			
Penetration			
Primary Lithology	Dolomite	Percent	0
Secondary Lithology	Chert/Chalcedony	Percent	0
Tertiary Lithology		Percent	
Comments			

System	Cambrian		
Series			
Group			
Formation	Jordan		
Member			
Submember			
Start Depth	1005.00 ft	End Depth	1115.00 ft
Contact Accuracy			
Penetration			
Primary Lithology	Sandstone	Percent	0
Secondary Lithology	Dolomite	Percent	0
Tertiary Lithology		Percent	
Comments			

System	Cambrian		
Series			
Group			
Formation	St. Lawrence		
Member			
Submember			
Start Depth	1115.00 ft	End Depth	1220.00 ft
Contact Accuracy			
Penetration			
Primary Lithology	Dolomite	Percent	100
Secondary Lithology		Percent	
Tertiary Lithology		Percent	
Comments			

System	Cambrian		
Series			
Group	Tunnel City		
Formation	Lone Rock		
Member			
Submember			
Start Depth	1220.00 ft	End Depth	1315.00 ft
Contact Accuracy			
Penetration			
Primary Lithology	Sandstone	Percent	0
Secondary Lithology	Shale	Percent	0
Tertiary Lithology	Dolomite	Percent	0

Comments

System	Cambrian		
Series			
Group	Tunnel City		
Formation	Wonewoc		
Member			
Submember			
Start Depth	1315.00 ft	End Depth	1470.00 ft
Contact Accuracy			
Penetration			
Primary Lithology	Sandstone	Percent	100
Secondary Lithology		Percent	
Tertiary Lithology		Percent	
Comments			

System	Cambrian		
Series			
Group	Tunnel City		
Formation	Eau Claire		
Member			
Submember			
Start Depth	1470.00 ft	End Depth	1501.00 ft
Contact Accuracy			
Penetration			
Primary Lithology	Sandstone	Percent	0
Secondary Lithology	Shale	Percent	0
Tertiary Lithology		Percent	
Comments			

Water Production Information

Date	02/03/1950	Start Time	
Aquifer	Unknown		
Static Water Level	276.00 ft	Yield	860 gallons per minute
Pumping Water Level	354 ft	Yield Method	Unknown
Measurement	Unknown	Pump Test	No
Pump Method	Unknown	Duration	0 mins
Comments			

Chip Storage Information

Date	07/25/1950		
Storage	CH3-9,10; CH4-1,2	Bin	
Number of Boxes	4	Number of Samples	295
Sample Intervals	0	Sample Gaps	255-260, 290-295
Sample Top	0 ft	Sample Bottom	1495 ft

Washed Top	0 ft	Washed Bottom	1495 ft
Duplicate Storage			
Comments			

<https://www.ihr.uiowa.edu/igs/geosam/well/4321/general-information>