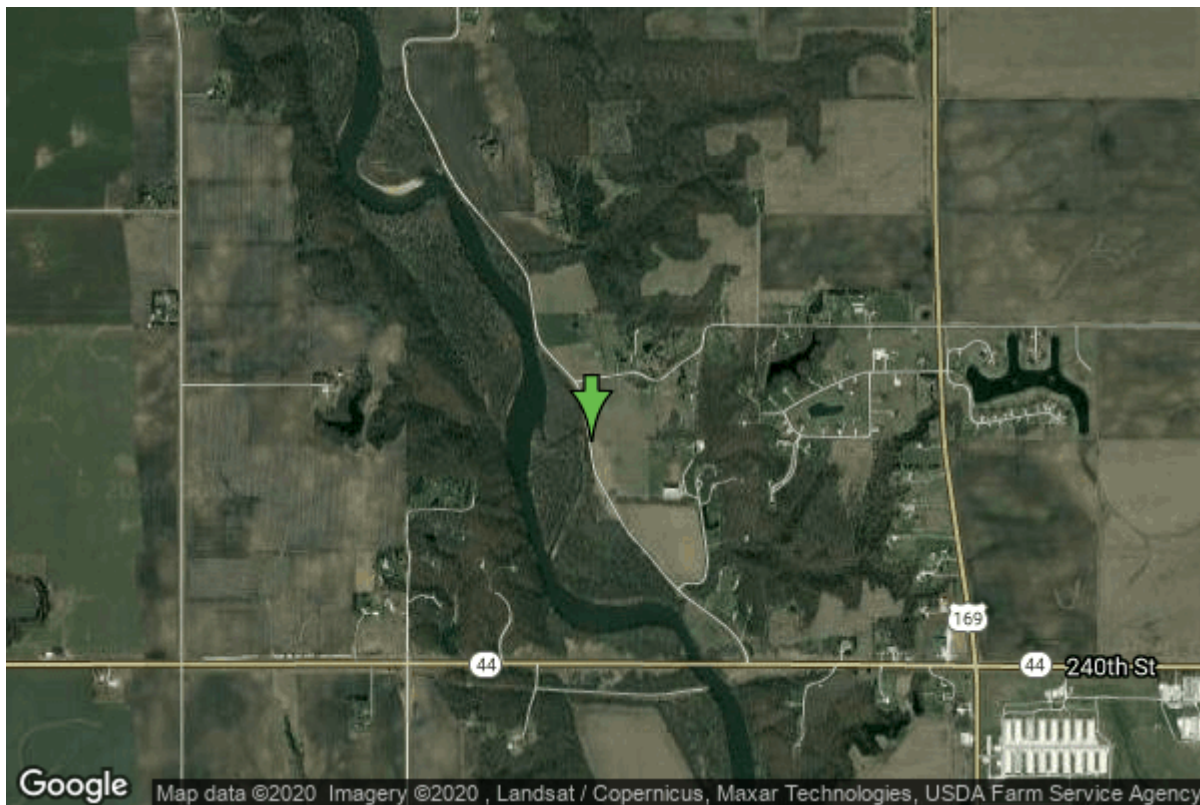


Well W#45615 Information



Date Received		State	Iowa
Owner Name	Dallas Center, City Of	County	Dallas
Alt Name		Quadrangle	Panther, Iowa
WNumber	45615	Township	T80N
PWTS ID	0	Range	R27W
PWS ID	2520098	Section	31
Storet ID	0	Quarter	SW NE NE
SDWIS ID	2574702	Latitude	41.6955100000
USGS ID	0	Longitude	-94.0390200000
Project	Source Water Protection	Accuracy	
Operator	Unknown	UTM X	413541
		UTM Y	4616491

Site Type	Drilled hole	Drilling Company	Layne Western - Ia.
Well Status	Active	Drilling Date	11/26/1997
Field Located	No	Drilling Method	Rotary
Elevation	899 ft	Bedrock Depth	0 ft
Elevation Accuracy	Digital Elevation Model Accurate to 5 ft	Well Depth	49 ft
Landscape Position	Valley	Total Depth	50 ft
		Well Types	Municipal, Public Supply
		Aquifers	Alluvium

Hole Construction Information

Date	11/26/1997	Depth	50.00 ft
Diameter	32.00 in		

Comments

Casing Construction Information

Date	11/26/1997	Casing Type	Steel
Start Depth	-7.00 ft	End Depth	2.30 ft
Diameter	10.00 in	Amount	9.30 ft
Comments			

Date	11/26/1997	Casing Type	Steel
Start Depth	2.30 ft	End Depth	41.00 ft
Diameter	10.00 in	Amount	37.70 ft
Comments			

Screen Construction Information

Date	11/26/1997	Slot Size	0.10
Screen Type	Steel	End Depth	49.00 ft
Start Depth	41.00 ft	Amount	8 ft
Diameter	10.00 in		
Comments			

Date	11/26/1997	Slot Size	0.00
Screen Type	Steel	End Depth	0.00 ft
Start Depth	0.00 ft	Amount	0 ft
Diameter	0.00 in		
Comments			

Grout Construction Information

Date	11/26/1997	Grout Placement	Unknown
Grout Type	Cement	End Depth	15.00 ft
Start Depth	3.00 ft		
Comments			

Date	11/26/1997	Grout Placement	Unknown
Grout Type	Bentonite (Clay)	End Depth	20.00 ft
Start Depth	15.00 ft		
Comments			

Gravel Pack Construction Information

Date	11/26/1997	Slot Size	
Gravel Pack Type	Unknown	End Depth	50.00 ft
Start Depth	20.00 ft		

Comments

Pump Construction Information

Date	11/26/1997	Pump Type	Submersible
Diameter	6.00 in	Rating	210
Depth Intake	48.00 ft		
Comments			

Log Information

Date	
Log Types	Drillers log
Prepared By	Unknown
Comments	

Water Production Information

Date	12/01/1997	Start Time	
Aquifer	Unknown		
Static Water Level	17.00 ft	Yield	210 gallons per minute
Pumping Water Level	27 ft	Yield Method	Orifice
Measurement	Airline	Pump Test	Yes
Pump Method	Pumped	Duration	2400 mins
Comments			

<https://www.iihr.uiowa.edu/igs/geosam/well/45615/general-information>