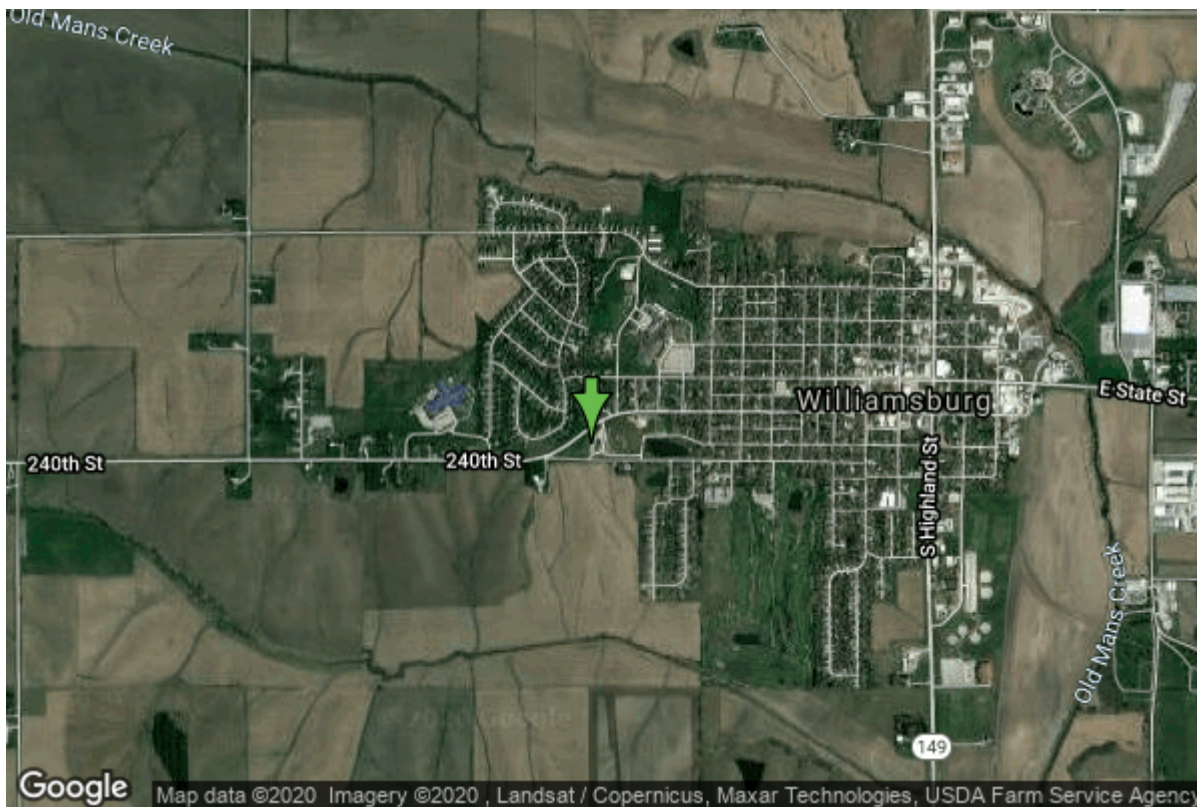


Well W#48278 Information



Date Received		State	Iowa
Owner Name	Williamsburg, City Of	County	Iowa
Alt Name	#7	Quadrangle	Williamsburg, Iowa
WNumber	48278	Township	T79N
PWTS ID	0	Range	R10W
PWS ID	4884023	Section	9
Storet ID	0	Quarter	SW SE SW
SDWIS ID	2574600	Latitude	41.6596800000
USGS ID	0	Longitude	-92.0213870000
Project	Source Water Protection	Accuracy	
Operator	Unknown	UTM X	581477
		UTM Y	4612455

Site Type	Drilled hole	Drilling Company	Unknown
Well Status	Active	Drilling Date	
Field Located	No	Drilling Method	Unknown
Elevation	857 ft	Bedrock Depth	0 ft
Elevation Accuracy	Digital Elevation Model Accurate to 5 ft	Well Depth	375 ft
Landscape Position	Unknown	Total Depth	375 ft
		Well Types	Municipal, Public Supply
		Aquifers	Pleistocene

Hole Construction Information

Date	04/24/1997	Depth	330.00 ft
Diameter	15.00 in		

Comments

Date	04/24/1997		
Diameter	10.00 in	Depth	376.00 ft
Comments			

Casing Construction Information

Date	04/24/1997	Casing Type	Steel
Start Depth	-1.00 ft	End Depth	330.00 ft
Diameter	10.00 in	Amount	331.00 ft
Comments			

Screen Construction Information

Date	04/24/1997		
Screen Type	Steel	Slot Size	0.03
Start Depth	321.00 ft	End Depth	376.00 ft
Diameter	10.00 in	Amount	55 ft
Comments			

Grout Construction Information

Date	04/24/1997		
Grout Type	Cement	Grout Placement	Unknown
Start Depth	0.00 ft	End Depth	330.00 ft
Comments			

Pump Construction Information

Date	04/24/1997	Pump Type	Submersible
Diameter	6.00 in	Rating	400
Depth Intake	200.00 ft		
Comments			

Log Information

Date	01/28/1999		
Log Types	Strip log		
Prepared By	Witzke, Brian		
Comments			

Date			
Log Types	Drillers log		

Prepared By Gingerich Well
Comments

Stratigraphy Information

System Quaternary
Series
Group
Formation
Member
Submember
Start Depth 0.00 ft End Depth 382.00 ft
Contact Accuracy
Penetration
Primary Lithology Percent
Secondary Lithology Percent
Tertiary Lithology Percent
Comments

System Devonian
Series
Group Yellow Spring (New Albany)
Formation Lime Creek
Member
Submember
Start Depth 382.00 ft End Depth 385.00 ft
Contact Accuracy
Penetration
Primary Lithology Percent
Secondary Lithology Percent
Tertiary Lithology Percent
Comments

Water Production Information

Date 04/25/1997 Start Time
Aquifer Unknown
Static Water Level 166.00 ft Yield 430 gallons per minute
Pumping Water Level 170 ft Yield Method Volumetric
Measurement Airline Pump Test Yes
Pump Method Airlifted Duration 300 mins
Comments

Chip Storage Information

Date 02/25/1999
Storage OD3-755 Bin

Number of Boxes	1	Number of Samples	77
Sample Intervals	5	Sample Gaps	
Sample Top	0 ft	Sample Bottom	385 ft
Washed Top	0 ft	Washed Bottom	0 ft
Duplicate Storage			
Comments			

<https://www.iihr.uiowa.edu/igs/geosam/well/48278/general-information>