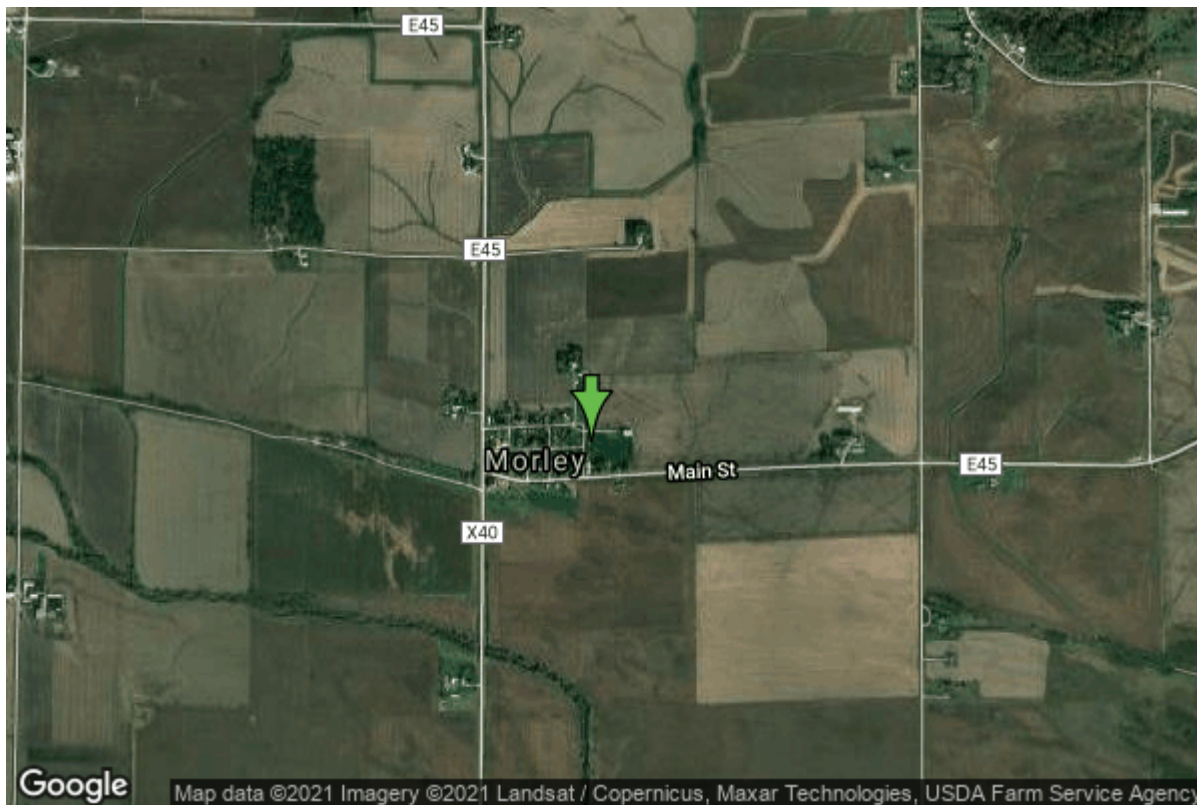


Well W#48279 Information



Date Received		State	Iowa
Owner Name	Morley, City Of	County	Jones
Alt Name		Quadrangle	Morley, Iowa
WNumber	48279	Township	T83N
PWTS ID	0	Range	R3W
PWS ID	5349001	Section	7
Storet ID	0	Quarter	SW SE SW
SDWIS ID	2412156	Latitude	42.0067080000
USGS ID	0	Longitude	-91.2431290000
Project	Source Water Protection	Accuracy	
Operator	Unknown	UTM X	645487
		UTM Y	4652014

Site Type	Drilled hole	Drilling Company	Gingerich Well Co.
Well Status	Active	Drilling Date	10/01/1991
Field Located	No	Drilling Method	Rotary
Elevation	805 ft	Bedrock Depth	39 ft
Elevation Accuracy	Digital Elevation Model Accurate to 5 ft	Well Depth	403 ft
Landscape Position	Hillside	Total Depth	403 ft
		Well Types	Municipal, Public Supply
		Aquifers	Silurian

Hole Construction Information

Date	10/01/1991	Depth	156.00 ft
Diameter	13.00 in		

Comments

Date	10/01/1991	Depth	403.00 ft
Diameter	8.00 in		
Comments			

Casing Construction Information

Date	10/01/1991	Casing Type	Steel
Start Depth	-1.00 ft	End Depth	185.00 ft
Diameter	8.00 in	Amount	186.00 ft
Comments			

Grout Construction Information

Date	10/01/1991	Grout Placement	Unknown
Grout Type	Cement	End Depth	156.00 ft
Start Depth	0.00 ft		
Comments			

Log Information

Date	
Log Types	Drillers log
Prepared By	Unknown
Comments	

Date	
Log Types	Strip log
Prepared By	Unknown
Comments	

Stratigraphy Information

System	Quaternary		
Series	Pleistocene Series		
Group			
Formation			
Member			
Submember			
Start Depth	0.00 ft	End Depth	39.00 ft
Contact Accuracy			
Penetration			
Primary Lithology	Till	Percent	90
Secondary Lithology	Silt	Percent	8

Tertiary Lithology	Soil Or Fill	Percent	2
Comments			
System	Silurian		
Series			
Group			
Formation			
Member			
Submember			
Start Depth	39.00 ft	End Depth	150.00 ft
Contact Accuracy			
Penetration			
Primary Lithology	Dolomite	Percent	100
Secondary Lithology		Percent	
Tertiary Lithology		Percent	
Comments			

System	Unknown		
Series			
Group			
Formation			
Member			
Submember			
Start Depth	150.00 ft	End Depth	403.00 ft
Contact Accuracy			
Penetration			
Primary Lithology		Percent	
Secondary Lithology		Percent	
Tertiary Lithology		Percent	
Comments			

Water Production Information

Date	10/01/1991	Start Time	
Aquifer	Unknown		
Static Water Level	19.00 ft	Yield	120 gallons per minute
Pumping Water Level	140 ft	Yield Method	Estimate
Measurement	Estimate	Pump Test	Yes
Pump Method	Airlifted	Duration	800 mins
Comments			

Chip Storage Information

Date	02/25/1999		
Storage	OD3-758	Bin	
Number of Boxes	1	Number of Samples	31
Sample Intervals	5	Sample Gaps	150-403

Sample Top	0 ft	Sample Bottom	150 ft
Washed Top	39 ft	Washed Bottom	150 ft
Duplicate Storage			
Comments			

<https://www.iihr.uiowa.edu/igs/geosam/well/48279/general-information>