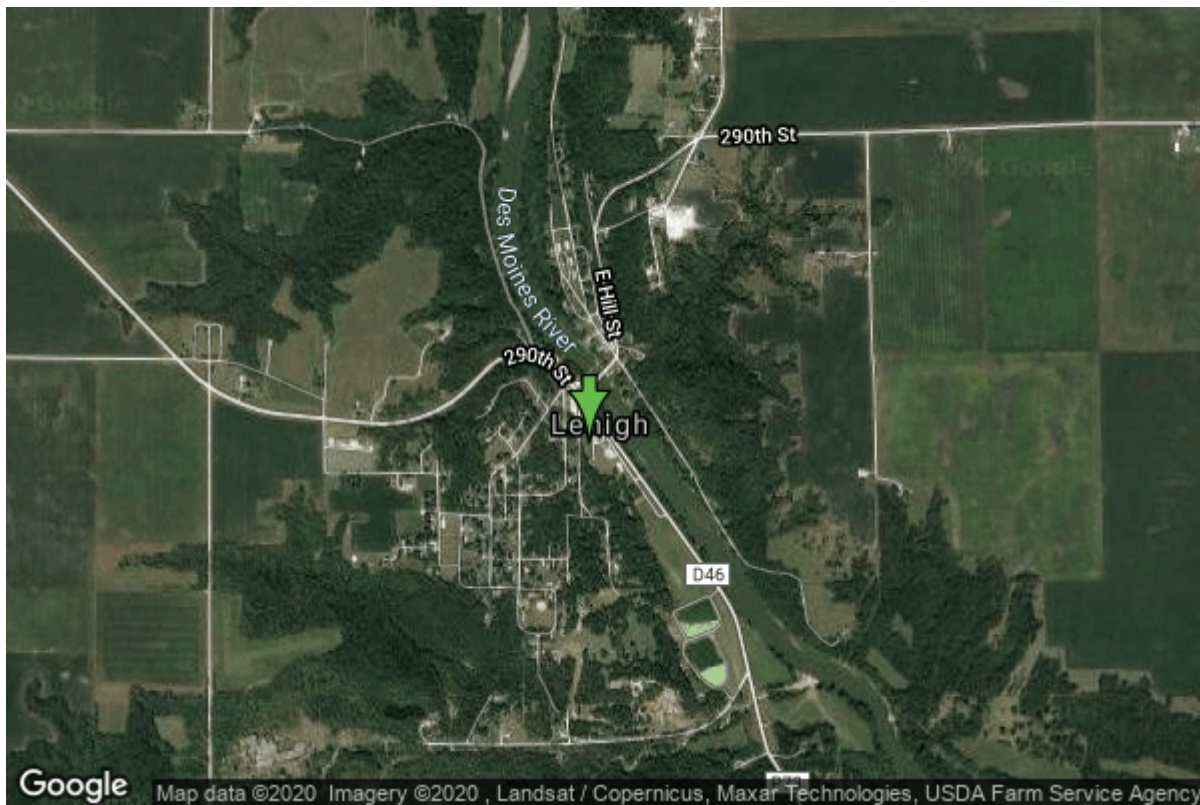


Well W#489 Information



Date Received		State	Iowa
Owner Name	Lehigh, City Of	County	Webster
Alt Name	#2	Quadrangle	Lehigh, Iowa
WNumber	489	Township	T87N
PWTS ID	0	Range	R28W
PWS ID	9453071	Section	12
Storet ID	0	Quarter	SE NE SW
SDWIS ID	2411642	Latitude	42.3585190000
USGS ID	0	Longitude	-94.0507030000
Project	Source Water Protection	Accuracy	
Operator	Unknown	UTM X	413473
		UTM Y	4690118

Site Type	Drilled hole	Drilling Company	Thorpe Well Co.
Well Status	Standby	Drilling Date	04/01/1937
Field Located	No	Drilling Method	Unknown
Elevation	947 ft	Bedrock Depth	27 ft
Elevation Accuracy	Digital Elevation Model Accurate to 5 ft	Well Depth	1005 ft
Landscape Position	Unknown	Total Depth	1005 ft
		Well Types	Municipal, Public Supply
		Aquifers	Devonian

Casing Construction Information

Date	04/01/1937	Casing Type	Steel
Start Depth	0.00 ft	End Depth	216.00 ft

Diameter	12.00 in	Amount	216.00 ft
Comments			

Date	04/01/1937	Casing Type	Steel
Start Depth	178.00 ft	End Depth	300.00 ft
Diameter	10.00 in	Amount	122.00 ft
Comments			

Grout Construction Information

Date	04/01/1937	Grout Placement	Unknown
Grout Type	Cement	End Depth	216.00 ft
Start Depth	0.00 ft		
Comments			

Log Information

Date	09/01/1951
Log Types	Strip log
Prepared By	Northup, Richard Cox
Comments	

Date	06/01/1951
Log Types	Strip log
Prepared By	Carmody, R.A.
Comments	

Date	
Log Types	Drillers log
Prepared By	Lehigh, City Of
Comments	

Stratigraphy Information

System	Quaternary		
Series	Pleistocene Series		
Group	Wisconsinan Episode		
Formation	Noah Creek		
Member			
Submember			
Start Depth	0.00 ft	End Depth	27.00 ft
Contact Accuracy			
Penetration			
Primary Lithology	Sand And Gravel	Percent	100
Secondary Lithology	Unknown	Percent	0
Tertiary Lithology	Unknown	Percent	0

Comments

System Pennsylvanian (Subsystem Of Carboniferous System)
Series
Group Cherokee
Formation
Member
Submember
Start Depth 27.00 ft **End Depth** 197.00 ft
Contact Accuracy
Penetration
Primary Lithology Sandstone **Percent** 0
Secondary Lithology Shale **Percent** 0
Tertiary Lithology **Percent**
Comments

System Mississippian (Subsystem Of Carboniferous System)
Series
Group Augusta
Formation
Member
Submember
Start Depth 197.00 ft **End Depth** 263.00 ft
Contact Accuracy
Penetration
Primary Lithology Limestone **Percent** 0
Secondary Lithology Dolomite **Percent** 0
Tertiary Lithology **Percent**
Comments

System Mississippian (Subsystem Of Carboniferous System)
Series
Group Sub-Augusta
Formation Gilmore City
Member
Submember
Start Depth 263.00 ft **End Depth** 330.00 ft
Contact Accuracy
Penetration
Primary Lithology Limestone **Percent** 0
Secondary Lithology Dolomite **Percent** 0
Tertiary Lithology **Percent**
Comments

System Mississippian (Subsystem Of Carboniferous System)
Series
Group Sub-Augusta
Formation Maynes Creek
Member

Submember			
Start Depth	330.00 ft	End Depth	495.00 ft
Contact Accuracy			
Penetration			
Primary Lithology	Limestone	Percent	0
Secondary Lithology	Dolomite	Percent	0
Tertiary Lithology	Chert/Chalcedony	Percent	0
Comments			
<hr/>			
System	Mississippian (Subsystem Of Carboniferous System)		
Series			
Group	North Hill		
Formation	Prospect Hill		
Member			
Submember			
Start Depth	495.00 ft	End Depth	510.00 ft
Contact Accuracy			
Penetration			
Primary Lithology	Siltstone	Percent	100
Secondary Lithology		Percent	
Tertiary Lithology		Percent	
Comments			
<hr/>			
System	Devonian		
Series			
Group	Yellow Spring (New Albany)		
Formation	Maple Mill		
Member			
Submember			
Start Depth	510.00 ft	End Depth	520.00 ft
Contact Accuracy			
Penetration			
Primary Lithology	Shale	Percent	100
Secondary Lithology		Percent	
Tertiary Lithology		Percent	
Comments			
<hr/>			
System	Devonian		
Series			
Group	Yellow Spring (New Albany)		
Formation	Aplington		
Member			
Submember			
Start Depth	520.00 ft	End Depth	532.00 ft
Contact Accuracy			
Penetration			
Primary Lithology	Dolomite	Percent	100
Secondary Lithology		Percent	
Tertiary Lithology		Percent	

Comments

System Devonian
Series
Group Yellow Spring (New Albany)
Formation Sheffield
Member
Submember
Start Depth 532.00 ft **End Depth** 540.00 ft
Contact Accuracy
Penetration
Primary Lithology Shale **Percent** 100
Secondary Lithology **Percent**
Tertiary Lithology **Percent**
Comments

System Devonian
Series
Group
Formation
Member
Submember
Start Depth 540.00 ft **End Depth** 890.00 ft
Contact Accuracy
Penetration
Primary Lithology Limestone **Percent** 0
Secondary Lithology Dolomite **Percent** 0
Tertiary Lithology **Percent**
Comments

System Ordovician
Series
Group
Formation Maquoketa
Member
Submember
Start Depth 890.00 ft **End Depth** 1005.00 ft
Contact Accuracy
Penetration
Primary Lithology Limestone **Percent** 0
Secondary Lithology Dolomite **Percent** 0
Tertiary Lithology Shale **Percent** 0
Comments

Water Production Information

Date 04/01/1937 **Start Time**
Aquifer Unknown

Static Water Level	-1.00 ft	Yield	100 gallons per minute
Pumping Water Level	0 ft	Yield Method	Unknown
Measurement	Unknown	Pump Test	No
Pump Method	Unknown	Duration	0 mins
Comments			

Chip Storage Information

Date		Bin	
Storage	WD2-2,3	Number of Samples	198
Number of Boxes	2	Sample Gaps	0-5
Sample Intervals	0	Sample Bottom	1005 ft
Sample Top	5 ft	Washed Bottom	0 ft
Washed Top	0 ft		
Duplicate Storage	WS: CE13-1		
Comments			

<https://www.iuhr.uiowa.edu/igs/geosam/well/489/general-information>