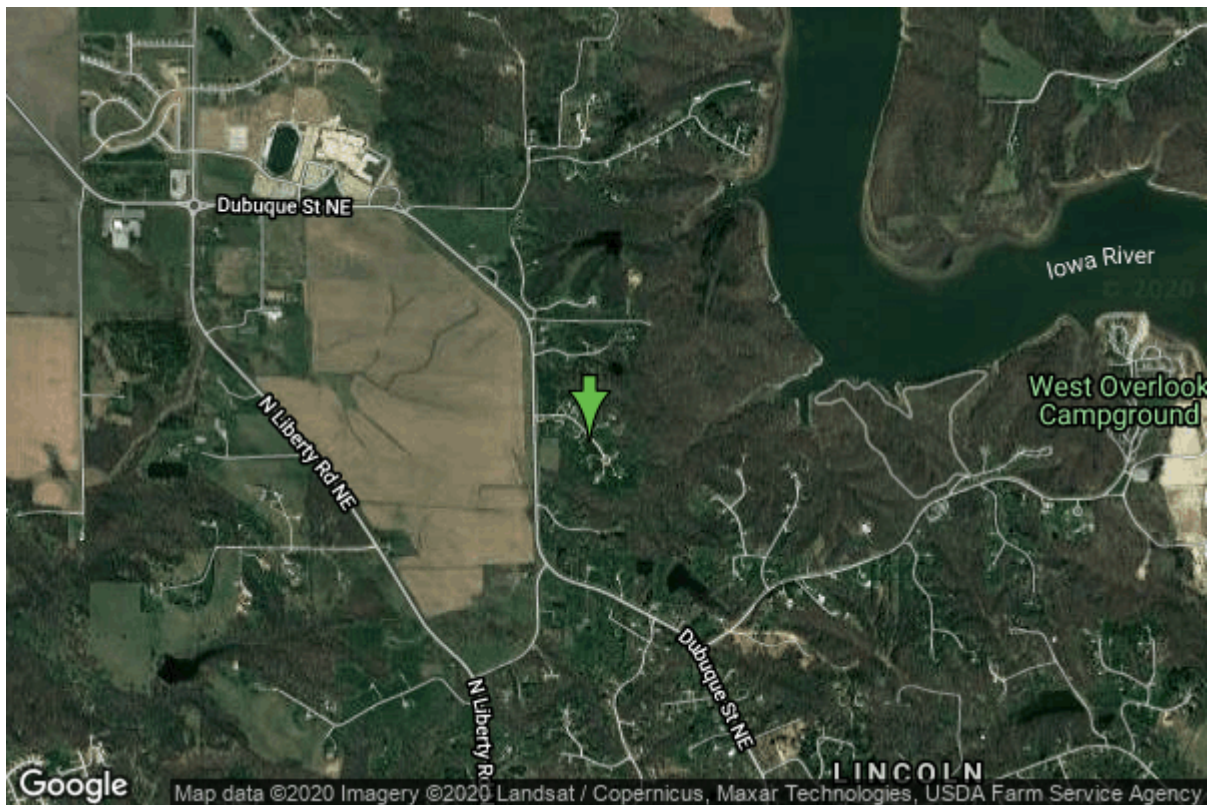


Well W#50654 Information



Date Received	10/04/1999	State	Iowa
Owner Name	Stoney Pointe	County	Johnson
Alt Name	Well #1	Quadrangle	Iowa City West, Iowa
WNumber	50654	Township	T80N
PWTS ID	0	Range	R6W
PWS ID	5225317	Section	21
Storet ID	0	Quarter	NW SW NE
SDWIS ID	2575757	Latitude	41.7260460000
USGS ID	0	Longitude	-91.5580200000
Project	Source Water Protection	Accuracy	
Operator	Unknown	UTM X	619934
		UTM Y	4620365

Site Type	Drilled hole	Drilling Company	Gingerich Well Co.
Well Status	Active	Drilling Date	09/10/1999
Field Located	No	Drilling Method	Rotary
Elevation	777 ft	Bedrock Depth	80 ft
Elevation Accuracy	Digital Elevation Model Accurate to 5 ft	Well Depth	505 ft
Landscape Position	Upland	Total Depth	505 ft
		Well Types	Public Supply
		Aquifers	Silurian

Hole Construction Information

Date	09/10/1999	Depth	84.00 ft
Diameter	18.70 in		

Comments

Date	09/10/1999	Depth	303.00 ft
Diameter	13.00 in		
Comments			

Date	09/10/1999	Depth	505.00 ft
Diameter	8.00 in		
Comments			

Casing Construction Information

Date	09/10/1999	Casing Type	PVC
Start Depth	-1.00 ft	End Depth	303.00 ft
Diameter	8.00 in	Amount	304.00 ft
Comments			

Grout Construction Information

Date	09/10/1999	Grout Placement	Unknown
Grout Type	Bentonite (Clay)	End Depth	303.00 ft
Start Depth	0.00 ft		
Comments			

Log Information

Date	
Log Types	Drillers log
Prepared By	Unknown
Comments	

Date	
Log Types	Strip log
Prepared By	Unknown
Comments	

Stratigraphy Information

System	Quaternary		
Series	Pleistocene Series		
Group			
Formation			
Member			
Submember			
Start Depth	0.00 ft	End Depth	78.00 ft

Contact Accuracy			
Penetration			
Primary Lithology	Till	Percent	100
Secondary Lithology		Percent	
Tertiary Lithology		Percent	
Comments			
<hr/>			
System	Devonian		
Series			
Group	Cedar Valley		
Formation			
Member			
Submember			
Start Depth	78.00 ft	End Depth	100.00 ft
Contact Accuracy			
Penetration			
Primary Lithology	Limestone	Percent	90
Secondary Lithology	Till	Percent	10
Tertiary Lithology		Percent	
Comments			
<hr/>			
System	Devonian		
Series			
Group	Cedar Valley		
Formation	Little Cedar		
Member			
Submember			
Start Depth	100.00 ft	End Depth	175.00 ft
Contact Accuracy			
Penetration			
Primary Lithology	Limestone	Percent	100
Secondary Lithology		Percent	
Tertiary Lithology		Percent	
Comments			
<hr/>			
System	Devonian		
Series			
Group	Wapsipinicon		
Formation	Pinicon Ridge		
Member	Davenport		
Submember			
Start Depth	175.00 ft	End Depth	200.00 ft
Contact Accuracy			
Penetration			
Primary Lithology	Limestone	Percent	80
Secondary Lithology	Dolomite	Percent	20
Tertiary Lithology		Percent	
Comments			

System	Devonian		
Series			
Group	Wapsipinicon		
Formation	Pinicon Ridge		
Member	Spring Grove		
Submember			
Start Depth	200.00 ft	End Depth	228.00 ft
Contact Accuracy			
Penetration			
Primary Lithology	Dolomite	Percent	100
Secondary Lithology		Percent	
Tertiary Lithology		Percent	
Comments			

System	Devonian		
Series			
Group	Wapsipinicon		
Formation	Pinicon Ridge		
Member	Kenwood		
Submember			
Start Depth	228.00 ft	End Depth	255.00 ft
Contact Accuracy			
Penetration			
Primary Lithology	Dolomite	Percent	95
Secondary Lithology	Chert/Chalcedony	Percent	5
Tertiary Lithology		Percent	
Comments			

System	Silurian		
Series			
Group			
Formation			
Member			
Submember			
Start Depth	255.00 ft	End Depth	485.00 ft
Contact Accuracy			
Penetration			
Primary Lithology	Dolomite	Percent	100
Secondary Lithology		Percent	
Tertiary Lithology		Percent	
Comments			

System	Silurian		
Series			
Group			
Formation	Blanding		
Member			
Submember			

Start Depth	485.00 ft	End Depth	495.00 ft
Contact Accuracy Penetration			
Primary Lithology	Dolomite	Percent	60
Secondary Lithology	Chert/Chalcedony	Percent	40
Tertiary Lithology		Percent	
Comments			

System	Ordovician		
Series			
Group			
Formation	Maquoketa		
Member	Brainard Shale		
Submember			
Start Depth	495.00 ft	End Depth	505.00 ft
Contact Accuracy Penetration			
Primary Lithology	Shale	Percent	100
Secondary Lithology		Percent	
Tertiary Lithology		Percent	
Comments			

Water Production Information

Date	09/10/1999	Start Time	
Aquifer	Unknown		
Static Water Level	180.00 ft	Yield	0 gallons per minute
Pumping Water Level	0 ft	Yield Method	Unknown
Measurement	Unknown	Pump Test	Yes
Pump Method	Unknown	Duration	0 mins
Comments			

Chip Storage Information

Date	12/06/1999		
Storage	OD4-001>002	Bin	
Number of Boxes	2	Number of Samples	100
Sample Intervals	5	Sample Gaps	470-75
Sample Top	0 ft	Sample Bottom	505 ft
Washed Top	80 ft	Washed Bottom	505 ft
Duplicate Storage			
Comments			