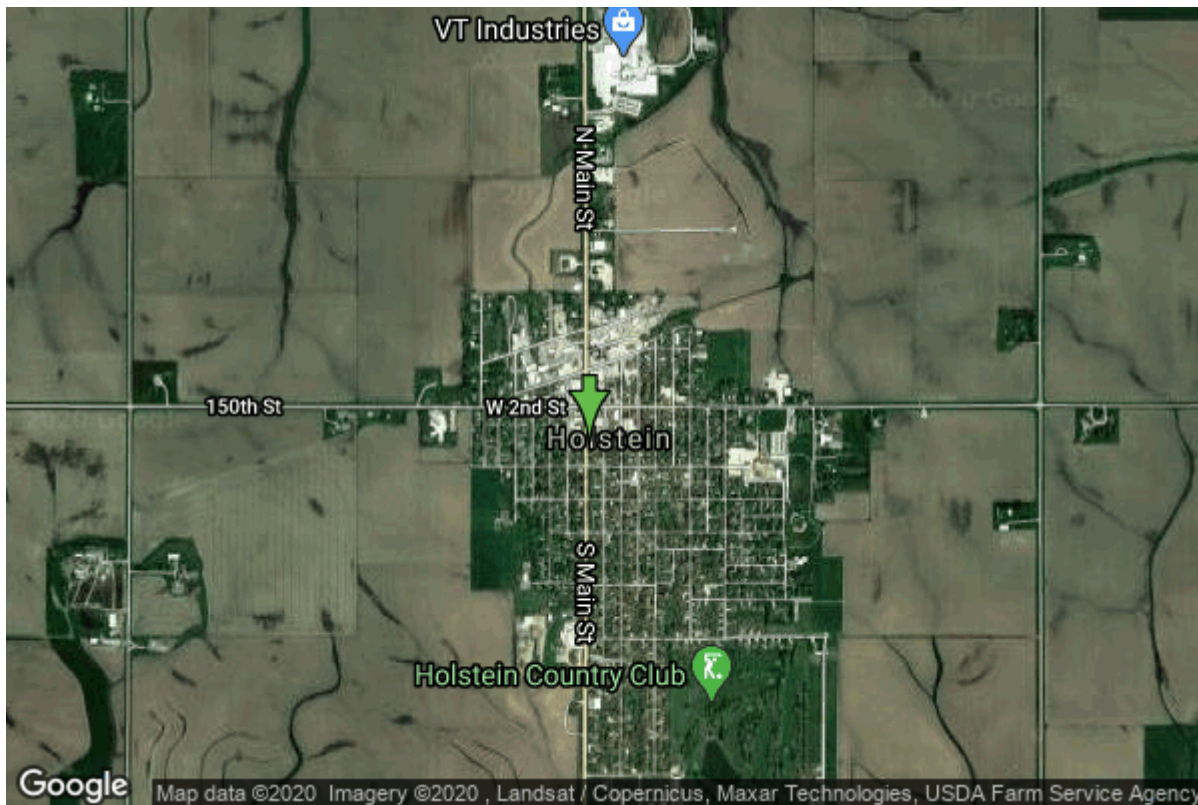


# Well W#5120 Information



|                      |                         |                   |                |
|----------------------|-------------------------|-------------------|----------------|
| <b>Date Received</b> |                         | <b>State</b>      | Iowa           |
| <b>Owner Name</b>    | Holstein, City Of       | <b>County</b>     | Iowa           |
| <b>Alt Name</b>      | SOUTH                   | <b>Quadrangle</b> | Holstein, Iowa |
| <b>WNumber</b>       | 5120                    | <b>Township</b>   | T89N           |
| <b>PWTS ID</b>       | 0                       | <b>Range</b>      | R40W           |
| <b>PWS ID</b>        | 4721054                 | <b>Section</b>    | 35             |
| <b>Storet ID</b>     | 0                       | <b>Quarter</b>    | NW NW NW       |
| <b>SDWIS ID</b>      | 2410692                 | <b>Latitude</b>   | 42.4881700000  |
| <b>USGS ID</b>       | 0                       | <b>Longitude</b>  | -95.5438900000 |
| <b>Project</b>       | Source Water Protection | <b>Accuracy</b>   |                |
| <b>Operator</b>      | Unknown                 | <b>UTM X</b>      | 290933         |
|                      |                         | <b>UTM Y</b>      | 4707115        |

---

|                           |                         |                         |                                     |
|---------------------------|-------------------------|-------------------------|-------------------------------------|
| <b>Site Type</b>          | Drilled hole            | <b>Drilling Company</b> | Rasmussen, Carrol                   |
| <b>Well Status</b>        | Not Used                | <b>Drilling Date</b>    | 10/01/1951                          |
| <b>Field Located</b>      | No                      | <b>Drilling Method</b>  | Cable                               |
| <b>Elevation</b>          | 1453 ft                 | <b>Bedrock Depth</b>    | 208 ft                              |
| <b>Elevation Accuracy</b> | Digital Elevation Model | <b>Well Depth</b>       | 430 ft                              |
|                           | Accurate to 5 ft        | <b>Total Depth</b>      | 430 ft                              |
| <b>Landscape Position</b> | Upland                  | <b>Well Types</b>       | Municipal, Public Supply            |
|                           |                         | <b>Aquifers</b>         | Dakota/Cretaceous,<br>Mississippian |

# Log Information

Date 10/26/1951  
Log Types Strip log  
Prepared By Unknown  
Comments

---

Date  
Log Types Drillers log  
Prepared By Holstein, City Of  
Comments

# Stratigraphy Information

System Quaternary  
Series Pleistocene Series  
Group Pre-Illinoian  
Formation  
Member  
Submember  
Start Depth 0.00 ft      End Depth 48.00 ft  
Contact Accuracy  
Penetration  
Primary Lithology Till - Oxidized And      Percent 100  
Unleached  
Secondary Lithology Unknown      Percent 0  
Tertiary Lithology Unknown      Percent 0  
Comments

---

System Quaternary  
Series Pleistocene Series  
Group Pre-Illinoian  
Formation  
Member  
Submember  
Start Depth 48.00 ft      End Depth 127.00 ft  
Contact Accuracy  
Penetration  
Primary Lithology Till - Unoxidized And      Percent 100  
Unleached  
Secondary Lithology Unknown      Percent 0  
Tertiary Lithology Unknown      Percent 0  
Comments

---

System Quaternary  
Series Pleistocene Series  
Group Pre-Illinoian

|                                     |                               |                  |           |
|-------------------------------------|-------------------------------|------------------|-----------|
| <b>Formation Member Submember</b>   |                               |                  |           |
| <b>Start Depth</b>                  | 127.00 ft                     | <b>End Depth</b> | 130.00 ft |
| <b>Contact Accuracy Penetration</b> |                               |                  |           |
| <b>Primary Lithology</b>            | Till - Oxidized And Unleached | <b>Percent</b>   | 100       |
| <b>Secondary Lithology</b>          | Unknown                       | <b>Percent</b>   | 0         |
| <b>Tertiary Lithology</b>           | Unknown                       | <b>Percent</b>   | 0         |
| <b>Comments</b>                     |                               |                  |           |

---

|                                     |                                             |                  |           |
|-------------------------------------|---------------------------------------------|------------------|-----------|
| <b>System Series Group</b>          | Quaternary Pleistocene Series Pre-Illinoian |                  |           |
| <b>Formation Member Submember</b>   |                                             |                  |           |
| <b>Start Depth</b>                  | 130.00 ft                                   | <b>End Depth</b> | 208.00 ft |
| <b>Contact Accuracy Penetration</b> |                                             |                  |           |
| <b>Primary Lithology</b>            | Till - Unoxidized And Unleached             | <b>Percent</b>   | 100       |
| <b>Secondary Lithology</b>          | Unknown                                     | <b>Percent</b>   | 0         |
| <b>Tertiary Lithology</b>           | Unknown                                     | <b>Percent</b>   | 0         |
| <b>Comments</b>                     |                                             |                  |           |

---

|                                     |                                            |                  |           |
|-------------------------------------|--------------------------------------------|------------------|-----------|
| <b>System Series Group</b>          | Cretaceous Fort Benton ("Lower Colorado ") |                  |           |
| <b>Formation Member Submember</b>   |                                            |                  |           |
| <b>Start Depth</b>                  | 208.00 ft                                  | <b>End Depth</b> | 267.00 ft |
| <b>Contact Accuracy Penetration</b> |                                            |                  |           |
| <b>Primary Lithology</b>            | Shale                                      | <b>Percent</b>   | 100       |
| <b>Secondary Lithology</b>          |                                            | <b>Percent</b>   |           |
| <b>Tertiary Lithology</b>           |                                            | <b>Percent</b>   |           |
| <b>Comments</b>                     |                                            |                  |           |

---

|                                   |                                            |                  |           |
|-----------------------------------|--------------------------------------------|------------------|-----------|
| <b>System Series Group</b>        | Cretaceous Fort Benton ("Lower Colorado ") |                  |           |
| <b>Formation Member Submember</b> | Dakota Woodbury                            |                  |           |
| <b>Start Depth</b>                | 267.00 ft                                  | <b>End Depth</b> | 380.00 ft |
| <b>Contact Accuracy</b>           |                                            |                  |           |

|                            |       |                |     |
|----------------------------|-------|----------------|-----|
| <b>Penetration</b>         |       |                |     |
| <b>Primary Lithology</b>   | Shale | <b>Percent</b> | 100 |
| <b>Secondary Lithology</b> |       | <b>Percent</b> |     |
| <b>Tertiary Lithology</b>  |       | <b>Percent</b> |     |
| <b>Comments</b>            |       |                |     |

---

|                            |                                 |                  |           |
|----------------------------|---------------------------------|------------------|-----------|
| <b>System</b>              | Cretaceous                      |                  |           |
| <b>Series</b>              |                                 |                  |           |
| <b>Group</b>               | Fort Benton ("Lower Colorado ") |                  |           |
| <b>Formation</b>           | Dakota                          |                  |           |
| <b>Member</b>              | Nishnabotna                     |                  |           |
| <b>Submember</b>           |                                 |                  |           |
| <b>Start Depth</b>         | 380.00 ft                       | <b>End Depth</b> | 430.00 ft |
| <b>Contact Accuracy</b>    |                                 |                  |           |
| <b>Penetration</b>         |                                 |                  |           |
| <b>Primary Lithology</b>   | Sandstone                       | <b>Percent</b>   | 100       |
| <b>Secondary Lithology</b> |                                 | <b>Percent</b>   |           |
| <b>Tertiary Lithology</b>  |                                 | <b>Percent</b>   |           |
| <b>Comments</b>            |                                 |                  |           |

## Chip Storage Information

|                          |            |                          |                                              |
|--------------------------|------------|--------------------------|----------------------------------------------|
| <b>Date</b>              | 10/23/1951 |                          |                                              |
| <b>Storage</b>           | CK5-5      | <b>Bin</b>               |                                              |
| <b>Number of Boxes</b>   | 1          | <b>Number of Samples</b> | 32                                           |
| <b>Sample Intervals</b>  | 0          | <b>Sample Gaps</b>       | 0-3, 18-49, 55-68, 70-75,<br>97-106, 106-120 |
| <b>Sample Top</b>        | 3 ft       | <b>Sample Bottom</b>     | 370 ft                                       |
| <b>Washed Top</b>        | 216 ft     | <b>Washed Bottom</b>     | 370 ft                                       |
| <b>Duplicate Storage</b> |            |                          |                                              |
| <b>Comments</b>          |            |                          |                                              |

<https://www.iuhr.uiowa.edu/igs/geosam/well/5120/general-information>