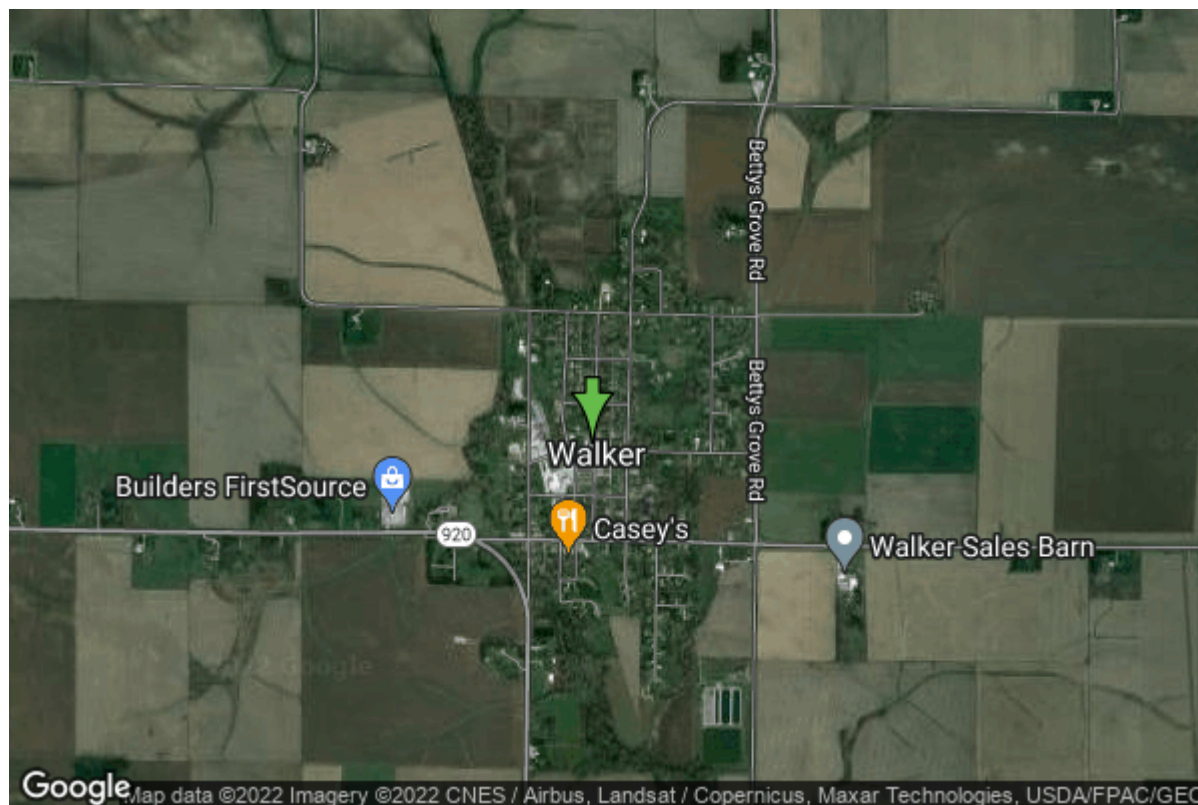


# Well W#5123 Information



<b>Date Received</b>		<b>State</b>	Iowa
<b>Owner Name</b>	Walker, City Of	<b>County</b>	Linn
<b>Alt Name</b>	#1	<b>Quadrangle</b>	Walker, Iowa
<b>WNumber</b>	5123	<b>Township</b>	T86N
<b>PWTS ID</b>	0	<b>Range</b>	R8W
<b>PWS ID</b>	5792059	<b>Section</b>	4
<b>Storet ID</b>	0	<b>Quarter</b>	SE SW NE
<b>SDWIS ID</b>	2410772	<b>Latitude</b>	42.2869300000
<b>USGS ID</b>	0	<b>Longitude</b>	-91.7802500000
<b>Project</b>	Source Water Protection	<b>Accuracy</b>	
<b>Operator</b>	Unknown	<b>UTM X</b>	600562
		<b>UTM Y</b>	4682355

<b>Site Type</b>	Drilled hole	<b>Drilling Company</b>	Howard, Earl
<b>Well Status</b>	Standby	<b>Drilling Date</b>	10/27/1951
<b>Field Located</b>	No	<b>Drilling Method</b>	Unknown
<b>Elevation</b>	901 ft	<b>Bedrock Depth</b>	0 ft
<b>Elevation Accuracy</b>	Digital Elevation Model Accurate to 5 ft	<b>Well Depth</b>	350 ft
<b>Landscape Position</b>	Unknown	<b>Total Depth</b>	350 ft
		<b>Well Types</b>	Municipal, Public Supply
		<b>Aquifers</b>	Silurian/Devonian

## Casing Construction Information

<b>Date</b>	10/27/1951	<b>Casing Type</b>	Steel
<b>Start Depth</b>	0.00 ft	<b>End Depth</b>	0.00 ft

<b>Diameter</b>	12.00 in	<b>Amount</b>	15.00 ft
<b>Comments</b>			
<b>Date</b>	10/27/1951	<b>Casing Type</b>	Steel
<b>Start Depth</b>	-0.50 ft	<b>End Depth</b>	42.50 ft
<b>Diameter</b>	8.00 in	<b>Amount</b>	43.00 ft
<b>Comments</b>			
<b>Date</b>	10/27/1951	<b>Casing Type</b>	Steel
<b>Start Depth</b>	37.00 ft	<b>End Depth</b>	40.00 ft
<b>Diameter</b>	6.00 in	<b>Amount</b>	3.00 ft
<b>Comments</b>			
<b>Date</b>	10/27/1951	<b>Casing Type</b>	Steel
<b>Start Depth</b>	67.00 ft	<b>End Depth</b>	102.00 ft
<b>Diameter</b>	6.00 in	<b>Amount</b>	35.00 ft
<b>Comments</b>			
<b>Date</b>	10/27/1951	<b>Casing Type</b>	Steel
<b>Start Depth</b>	127.00 ft	<b>End Depth</b>	165.00 ft
<b>Diameter</b>	6.00 in	<b>Amount</b>	38.00 ft
<b>Comments</b>			
<b>Date</b>	10/27/1951	<b>Casing Type</b>	Perforated Steel
<b>Start Depth</b>	40.00 ft	<b>End Depth</b>	67.00 ft
<b>Diameter</b>	6.00 in	<b>Amount</b>	27.00 ft
<b>Comments</b>			
<b>Date</b>	10/27/1951	<b>Casing Type</b>	Perforated Steel
<b>Start Depth</b>	102.00 ft	<b>End Depth</b>	127.00 ft
<b>Diameter</b>	6.00 in	<b>Amount</b>	25.00 ft
<b>Comments</b>			

## Log Information

<b>Date</b>	11/09/1951
<b>Log Types</b>	Strip log
<b>Prepared By</b>	Unknown
<b>Comments</b>	
<b>Date</b>	
<b>Log Types</b>	Drillers log
<b>Prepared By</b>	Walker, City Of
<b>Comments</b>	

# Stratigraphy Information

**System** Quaternary  
**Series** Pleistocene Series  
**Group**  
**Formation**  
**Member**  
**Submember**  
**Start Depth** 0.00 ft **End Depth** 40.00 ft  
**Contact Accuracy**  
**Penetration**  
**Primary Lithology** Sand **Percent** 0  
**Secondary Lithology** Till **Percent** 0  
**Tertiary Lithology** **Percent**  
**Comments**

---

**System** Devonian  
**Series**  
**Group** Cedar Valley  
**Formation** Little Cedar  
**Member** Solon  
**Submember**  
**Start Depth** 40.00 ft **End Depth** 115.00 ft  
**Contact Accuracy**  
**Penetration**  
**Primary Lithology** Limestone **Percent** 0  
**Secondary Lithology** Shale **Percent** 0  
**Tertiary Lithology** **Percent**  
**Comments**

---

**System** Devonian  
**Series**  
**Group** Wapsipinicon  
**Formation** Pinicon Ridge  
**Member** Davenport  
**Submember**  
**Start Depth** 115.00 ft **End Depth** 125.00 ft  
**Contact Accuracy**  
**Penetration**  
**Primary Lithology** Limestone **Percent** 0  
**Secondary Lithology** Shale **Percent** 0  
**Tertiary Lithology** **Percent**  
**Comments**

---

**System** Devonian  
**Series**  
**Group** Wapsipinicon  
**Formation** Pinicon Ridge

<b>Member</b>	Spring Grove		
<b>Submember</b>			
<b>Start Depth</b>	125.00 ft	<b>End Depth</b>	145.00 ft
<b>Contact Accuracy Penetration</b>			
<b>Primary Lithology</b>	Dolomite	<b>Percent</b>	0
<b>Secondary Lithology</b>	Limestone	<b>Percent</b>	0
<b>Tertiary Lithology</b>	Shale	<b>Percent</b>	0
<b>Comments</b>			

---

<b>System</b>	Devonian		
<b>Series</b>			
<b>Group</b>	Wapsipinicon		
<b>Formation</b>	Pinicon Ridge		
<b>Member</b>	Kenwood		
<b>Submember</b>			
<b>Start Depth</b>	145.00 ft	<b>End Depth</b>	160.00 ft
<b>Contact Accuracy Penetration</b>			
<b>Primary Lithology</b>	Dolomite	<b>Percent</b>	0
<b>Secondary Lithology</b>	Shale	<b>Percent</b>	0
<b>Tertiary Lithology</b>	Chert/Chalcedony	<b>Percent</b>	0
<b>Comments</b>			

---

<b>System</b>	Devonian		
<b>Series</b>			
<b>Group</b>	Wapsipinicon		
<b>Formation</b>	Otis		
<b>Member</b>			
<b>Submember</b>			
<b>Start Depth</b>	160.00 ft	<b>End Depth</b>	170.00 ft
<b>Contact Accuracy Penetration</b>			
<b>Primary Lithology</b>	Dolomite	<b>Percent</b>	0
<b>Secondary Lithology</b>	Shale	<b>Percent</b>	0
<b>Tertiary Lithology</b>		<b>Percent</b>	
<b>Comments</b>			

---

<b>System</b>	Devonian		
<b>Series</b>			
<b>Group</b>	Wapsipinicon		
<b>Formation</b>	Otis		
<b>Member</b>			
<b>Submember</b>			
<b>Start Depth</b>	170.00 ft	<b>End Depth</b>	193.00 ft
<b>Contact Accuracy Penetration</b>			
<b>Primary Lithology</b>	Dolomite	<b>Percent</b>	0
<b>Secondary Lithology</b>	Chert/Chalcedony	<b>Percent</b>	0

<b>Tertiary Lithology</b>	Limestone	<b>Percent</b>	0
<b>Comments</b>			
<b>System</b>	Silurian		
<b>Series</b>			
<b>Group</b>			
<b>Formation</b>	Laporte City		
<b>Member</b>			
<b>Submember</b>			
<b>Start Depth</b>	193.00 ft	<b>End Depth</b>	198.00 ft
<b>Contact Accuracy</b>			
<b>Penetration</b>			
<b>Primary Lithology</b>	Chert/Chalcedony	<b>Percent</b>	0
<b>Secondary Lithology</b>	Dolomite	<b>Percent</b>	0
<b>Tertiary Lithology</b>		<b>Percent</b>	
<b>Comments</b>			

<b>System</b>	Silurian		
<b>Series</b>			
<b>Group</b>			
<b>Formation</b>			
<b>Member</b>			
<b>Submember</b>			
<b>Start Depth</b>	198.00 ft	<b>End Depth</b>	350.00 ft
<b>Contact Accuracy</b>			
<b>Penetration</b>			
<b>Primary Lithology</b>	Dolomite	<b>Percent</b>	0
<b>Secondary Lithology</b>	Chert/Chalcedony	<b>Percent</b>	0
<b>Tertiary Lithology</b>		<b>Percent</b>	
<b>Comments</b>			

## Water Production Information

<b>Date</b>	10/27/1951	<b>Start Time</b>	
<b>Aquifer</b>	Unknown		
<b>Static Water Level</b>	37.00 ft	<b>Yield</b>	40 gallons per minute
<b>Pumping Water Level</b>	47 ft	<b>Yield Method</b>	Unknown
<b>Measurement</b>	Unknown	<b>Pump Test</b>	No
<b>Pump Method</b>	Unknown	<b>Duration</b>	0 mins
<b>Comments</b>			

## Chip Storage Information

<b>Date</b>	10/29/1951		
<b>Storage</b>	CK1-2	<b>Bin</b>	
<b>Number of Boxes</b>	1	<b>Number of Samples</b>	62
<b>Sample Intervals</b>	0	<b>Sample Gaps</b>	

<b>Sample Top</b>	0 ft	<b>Sample Bottom</b>	350 ft
<b>Washed Top</b>	40 ft	<b>Washed Bottom</b>	350 ft
<b>Duplicate Storage</b>			
<b>Comments</b>			

<https://www.iihr.uiowa.edu/igs/geosam/well/5123/general-information>