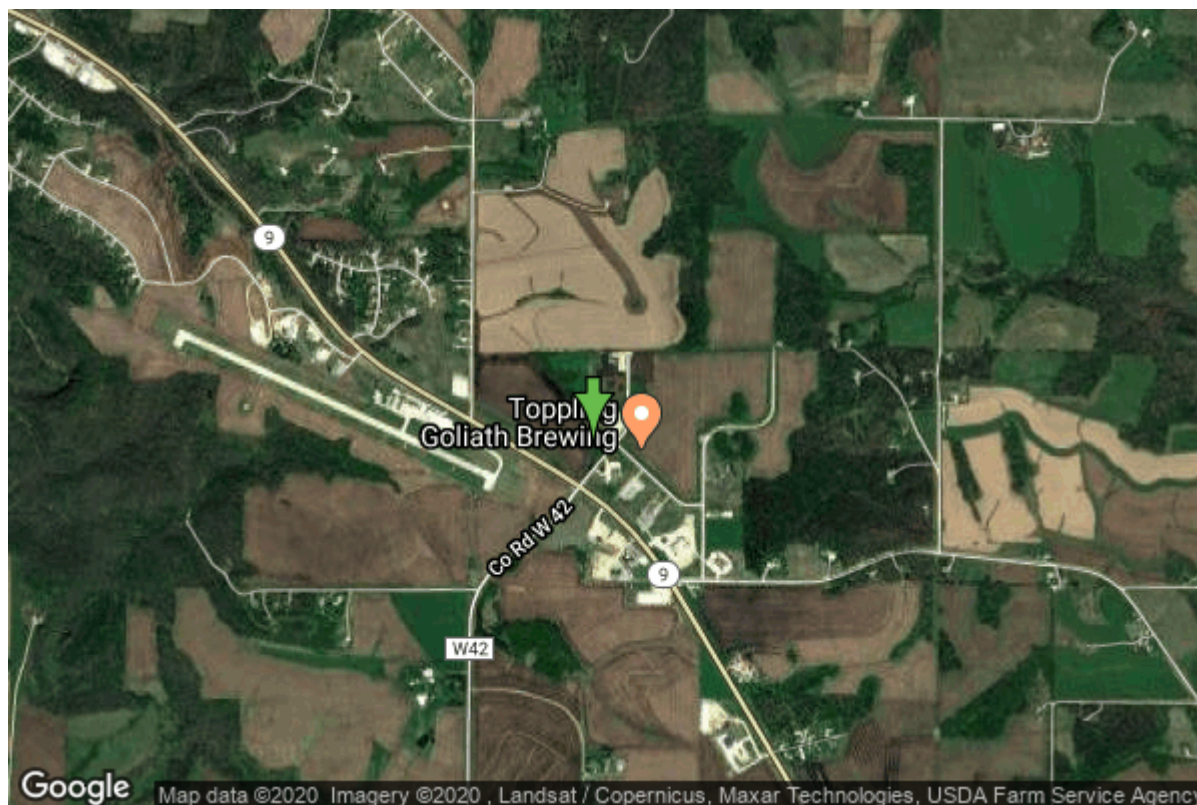


# Well W#52462 Information



<b>Date Received</b>		<b>State</b>	Iowa
<b>Owner Name</b>	Decorah, City Of	<b>County</b>	Winneshiek
<b>Alt Name</b>	Well #8	<b>Quadrangle</b>	Freeport, Iowa
<b>WNumber</b>	52462	<b>Township</b>	T98N
<b>PWTS ID</b>	0	<b>Range</b>	R8W
<b>PWS ID</b>	9630012	<b>Section</b>	25
<b>Storet ID</b>	0	<b>Quarter</b>	SE NE SW
<b>SDWIS ID</b>	2586052	<b>Latitude</b>	43.2743010000
<b>USGS ID</b>	0	<b>Longitude</b>	-91.7277380000
<b>Project</b>	Source Water Protection	<b>Accuracy</b>	
<b>Operator</b>	Unknown	<b>UTM X</b>	603238
		<b>UTM Y</b>	4792062

<b>Site Type</b>	Drilled hole	<b>Drilling Company</b>	Shawver Well Co.
<b>Well Status</b>	Active	<b>Drilling Date</b>	05/26/2000
<b>Field Located</b>	No	<b>Drilling Method</b>	Unknown
<b>Elevation</b>	1175 ft	<b>Bedrock Depth</b>	36 ft
<b>Elevation Accuracy</b>	Digital Elevation Model Accurate to 5 ft	<b>Well Depth</b>	715 ft
<b>Landscape Position</b>	Hillside	<b>Total Depth</b>	715 ft
		<b>Well Types</b>	Public Supply
		<b>Aquifers</b>	Cambrian-Ordovician

## Hole Construction Information

<b>Date</b>	05/26/2000	<b>Depth</b>	38.00 ft
<b>Diameter</b>	12.25 in		

## Comments

---

Date	05/26/2000		
Diameter	9.88 in	Depth	439.00 ft
Comments			

---

Date	05/26/2000		
Diameter	6.38 in	Depth	715.00 ft
Comments			

## Casing Construction Information

Date	05/26/2000	Casing Type	Steel
Start Depth	-2.00 ft	End Depth	439.00 ft
Diameter	7.00 in	Amount	441.00 ft
Comments			

## Grout Construction Information

Date	05/26/2000		
Grout Type	Cement	Grout Placement	Unknown
Start Depth	0.00 ft	End Depth	439.00 ft
Comments			

## Log Information

Date	
Log Types	Strip log
Prepared By	Unknown
Comments	

---

Date	
Log Types	Drillers log
Prepared By	Decorah, City Of
Comments	

## Stratigraphy Information

System	Quaternary		
Series			
Group			
Formation			
Member			
Submember			
Start Depth	0.00 ft	End Depth	40.00 ft

<b>Contact Accuracy</b>			
<b>Penetration</b>			
<b>Primary Lithology</b>	Loess	<b>Percent</b>	0
<b>Secondary Lithology</b>	Till	<b>Percent</b>	0
<b>Tertiary Lithology</b>		<b>Percent</b>	
<b>Comments</b>			
<hr/>			
<b>System</b>	Ordovician		
<b>Series</b>			
<b>Group</b>	Galena		
<b>Formation</b>			
<b>Member</b>			
<b>Submember</b>			
<b>Start Depth</b>	40.00 ft	<b>End Depth</b>	265.00 ft
<b>Contact Accuracy</b>			
<b>Penetration</b>			
<b>Primary Lithology</b>	Limestone	<b>Percent</b>	0
<b>Secondary Lithology</b>	Chert/Chalcedony	<b>Percent</b>	0
<b>Tertiary Lithology</b>	Unknown	<b>Percent</b>	0
<b>Comments</b>	No sample at 85'-90'.		
<hr/>			
<b>System</b>	Ordovician		
<b>Series</b>			
<b>Group</b>	Galena		
<b>Formation</b>	Decorah		
<b>Member</b>			
<b>Submember</b>			
<b>Start Depth</b>	265.00 ft	<b>End Depth</b>	295.00 ft
<b>Contact Accuracy</b>			
<b>Penetration</b>			
<b>Primary Lithology</b>	Shale	<b>Percent</b>	0
<b>Secondary Lithology</b>	Limestone	<b>Percent</b>	0
<b>Tertiary Lithology</b>	Chert/Chalcedony	<b>Percent</b>	0
<b>Comments</b>			
<hr/>			
<b>System</b>	Ordovician		
<b>Series</b>			
<b>Group</b>	Galena		
<b>Formation</b>	Platteville		
<b>Member</b>			
<b>Submember</b>			
<b>Start Depth</b>	295.00 ft	<b>End Depth</b>	328.00 ft
<b>Contact Accuracy</b>			
<b>Penetration</b>			
<b>Primary Lithology</b>	Limestone	<b>Percent</b>	0
<b>Secondary Lithology</b>	Shale	<b>Percent</b>	0
<b>Tertiary Lithology</b>		<b>Percent</b>	
<b>Comments</b>	Questionable base.		

---

<b>System</b>	Ordovician		
<b>Series</b>			
<b>Group</b>	Ancell		
<b>Formation</b>	St. Peter Sandstone		
<b>Member</b>			
<b>Submember</b>			
<b>Start Depth</b>	328.00 ft	<b>End Depth</b>	375.00 ft
<b>Contact Accuracy</b>			
<b>Penetration</b>			
<b>Primary Lithology</b>	Sandstone	<b>Percent</b>	0
<b>Secondary Lithology</b>	Limestone	<b>Percent</b>	0
<b>Tertiary Lithology</b>	Shale	<b>Percent</b>	0
<b>Comments</b>	Questionable base.		

---

<b>System</b>	Ordovician		
<b>Series</b>			
<b>Group</b>	Prairie Du Chien		
<b>Formation</b>			
<b>Member</b>			
<b>Submember</b>			
<b>Start Depth</b>	375.00 ft	<b>End Depth</b>	675.00 ft
<b>Contact Accuracy</b>			
<b>Penetration</b>			
<b>Primary Lithology</b>	Dolomite	<b>Percent</b>	0
<b>Secondary Lithology</b>	Limestone	<b>Percent</b>	0
<b>Tertiary Lithology</b>	Sandstone	<b>Percent</b>	0
<b>Comments</b>	Questionable base. No sample at 450'-505' and 600'-675'.		

---

<b>System</b>	Cambrian		
<b>Series</b>			
<b>Group</b>			
<b>Formation</b>	Jordan		
<b>Member</b>			
<b>Submember</b>			
<b>Start Depth</b>	675.00 ft	<b>End Depth</b>	715.00 ft
<b>Contact Accuracy</b>			
<b>Penetration</b>			
<b>Primary Lithology</b>	Sandstone	<b>Percent</b>	0
<b>Secondary Lithology</b>		<b>Percent</b>	
<b>Tertiary Lithology</b>		<b>Percent</b>	
<b>Comments</b>	No sample.		

## Water Production Information

<b>Date</b>	05/26/2000	<b>Start Time</b>	
<b>Aquifer</b>	Cambrian-Ordovician		
<b>Static Water Level</b>	316.00 ft	<b>Yield</b>	102 gallons per minute

<b>Pumping Water Level</b>	340 ft	<b>Yield Method</b>	Unknown
<b>Measurement</b>	Unknown	<b>Pump Test</b>	Yes
<b>Pump Method</b>	Unknown	<b>Duration</b>	510 mins
<b>Comments</b>			

## Chip Storage Information

<b>Date</b>	08/29/2000	<b>Bin</b>	
<b>Storage</b>	OD4-122>123	<b>Number of Samples</b>	108
<b>Number of Boxes</b>	2	<b>Sample Gaps</b>	85-90; 450-505
<b>Sample Intervals</b>	5	<b>Sample Bottom</b>	715 ft
<b>Sample Top</b>	0 ft	<b>Washed Bottom</b>	715 ft
<b>Washed Top</b>	40 ft		
<b>Duplicate Storage</b>			
<b>Comments</b>			

<https://www.ihr.uiowa.edu/igs/geosam/well/52462/general-information>