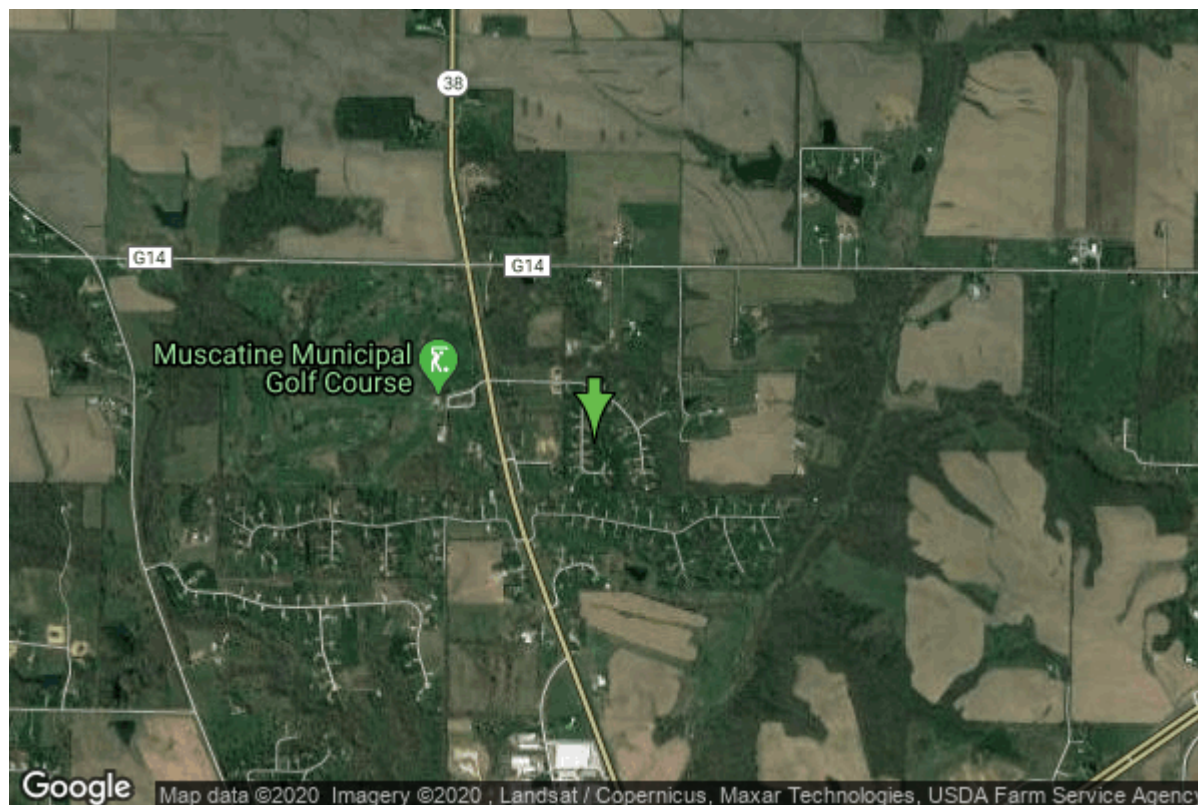


# Well W#52855 Information



<b>Date Received</b>		<b>State</b>	Iowa
<b>Owner Name</b>	Fairway Oaks	<b>County</b>	Muscatine
<b>Alt Name</b>		<b>Quadrangle</b>	Muscatine, Iowa-III.
<b>WNumber</b>	52855	<b>Township</b>	T77N
<b>PWTS ID</b>	0	<b>Range</b>	R2W
<b>PWS ID</b>	7048306	<b>Section</b>	13
<b>Storet ID</b>	0	<b>Quarter</b>	NW SE SW
<b>SDWIS ID</b>	2576902	<b>Latitude</b>	41.4731500000
<b>USGS ID</b>	0	<b>Longitude</b>	-91.0328800000
<b>Project</b>	Source Water Protection	<b>Accuracy</b>	
<b>Operator</b>	Unknown	<b>UTM X</b>	664253
		<b>UTM Y</b>	4593151

<b>Site Type</b>	Drilled hole	<b>Drilling Company</b>	Latta Well & Pump
<b>Well Status</b>	Unknown	<b>Drilling Date</b>	11/18/1997
<b>Field Located</b>	No	<b>Drilling Method</b>	Unknown
<b>Elevation</b>	668 ft	<b>Bedrock Depth</b>	98 ft
<b>Elevation Accuracy</b>	Digital Elevation Model Accurate to 5 ft	<b>Well Depth</b>	558 ft
<b>Landscape Position</b>	Hillside	<b>Total Depth</b>	558 ft
		<b>Well Types</b>	Public Supply
		<b>Aquifers</b>	Silurian

## Casing Construction Information

<b>Date</b>	11/18/1997	<b>Casing Type</b>	Steel
<b>Start Depth</b>	0.00 ft	<b>End Depth</b>	558.00 ft

<b>Diameter</b>	8.00 in	<b>Amount</b>	558.00 ft
<b>Comments</b>			

## Pump Construction Information

<b>Date</b>	11/18/1997	<b>Pump Type</b>	Unknown
<b>Diameter</b>	0.00 in	<b>Rating</b>	0
<b>Depth Intake</b>	231.00 ft		
<b>Comments</b>			

## Log Information

<b>Date</b>	09/25/2012
<b>Log Types</b>	Strip log
<b>Prepared By</b>	Unknown
<b>Comments</b>	

---

<b>Date</b>	
<b>Log Types</b>	Drillers log
<b>Prepared By</b>	Fairway Oaks
<b>Comments</b>	

## Stratigraphy Information

<b>System</b>	Quaternary		
<b>Series</b>			
<b>Group</b>			
<b>Formation</b>			
<b>Member</b>			
<b>Submember</b>			
<b>Start Depth</b>	0.00 ft	<b>End Depth</b>	15.00 ft
<b>Contact Accuracy</b>			
<b>Penetration</b>			
<b>Primary Lithology</b>	Sand	<b>Percent</b>	100
<b>Secondary Lithology</b>		<b>Percent</b>	
<b>Tertiary Lithology</b>		<b>Percent</b>	
<b>Comments</b>			

---

<b>System</b>	Quaternary		
<b>Series</b>	Pleistocene Series		
<b>Group</b>			
<b>Formation</b>			
<b>Member</b>			
<b>Submember</b>			
<b>Start Depth</b>	15.00 ft	<b>End Depth</b>	98.00 ft
<b>Contact Accuracy</b>			

<b>Penetration</b>			
<b>Primary Lithology</b>	Till	<b>Percent</b>	90
<b>Secondary Lithology</b>	Silt	<b>Percent</b>	7
<b>Tertiary Lithology</b>	Limestone	<b>Percent</b>	3
<b>Comments</b>			

---

<b>System</b>	Devonian		
<b>Series</b>			
<b>Group</b>	Cedar Valley		
<b>Formation</b>	Little Cedar		
<b>Member</b>	Solon		
<b>Submember</b>			
<b>Start Depth</b>	98.00 ft	<b>End Depth</b>	200.00 ft
<b>Contact Accuracy</b>			
<b>Penetration</b>			
<b>Primary Lithology</b>	Limestone	<b>Percent</b>	97
<b>Secondary Lithology</b>	Shale	<b>Percent</b>	2
<b>Tertiary Lithology</b>	Dolomite	<b>Percent</b>	1
<b>Comments</b>			

---

<b>System</b>	Devonian		
<b>Series</b>			
<b>Group</b>	Wapsipinicon		
<b>Formation</b>	Pinicon Ridge		
<b>Member</b>	Davenport		
<b>Submember</b>			
<b>Start Depth</b>	200.00 ft	<b>End Depth</b>	235.00 ft
<b>Contact Accuracy</b>			
<b>Penetration</b>			
<b>Primary Lithology</b>	Limestone	<b>Percent</b>	100
<b>Secondary Lithology</b>		<b>Percent</b>	
<b>Tertiary Lithology</b>		<b>Percent</b>	
<b>Comments</b>			

---

<b>System</b>	Silurian		
<b>Series</b>			
<b>Group</b>			
<b>Formation</b>			
<b>Member</b>			
<b>Submember</b>			
<b>Start Depth</b>	235.00 ft	<b>End Depth</b>	558.00 ft
<b>Contact Accuracy</b>			
<b>Penetration</b>			
<b>Primary Lithology</b>	Dolomite	<b>Percent</b>	97
<b>Secondary Lithology</b>	Chert/Chalcedony	<b>Percent</b>	3
<b>Tertiary Lithology</b>		<b>Percent</b>	
<b>Comments</b>			

# Chip Storage Information

<b>Date</b>	12/06/2000	<b>Bin</b>	
<b>Storage</b>	OD4-206>207	<b>Number of Samples</b>	111
<b>Number of Boxes</b>	2	<b>Sample Gaps</b>	557-558
<b>Sample Intervals</b>	5	<b>Sample Bottom</b>	557 ft
<b>Sample Top</b>	0 ft	<b>Washed Bottom</b>	557 ft
<b>Washed Top</b>	100 ft		
<b>Duplicate Storage</b>			
<b>Comments</b>			

<https://www.iihr.uiowa.edu/igs/geosam/well/52855/general-information>