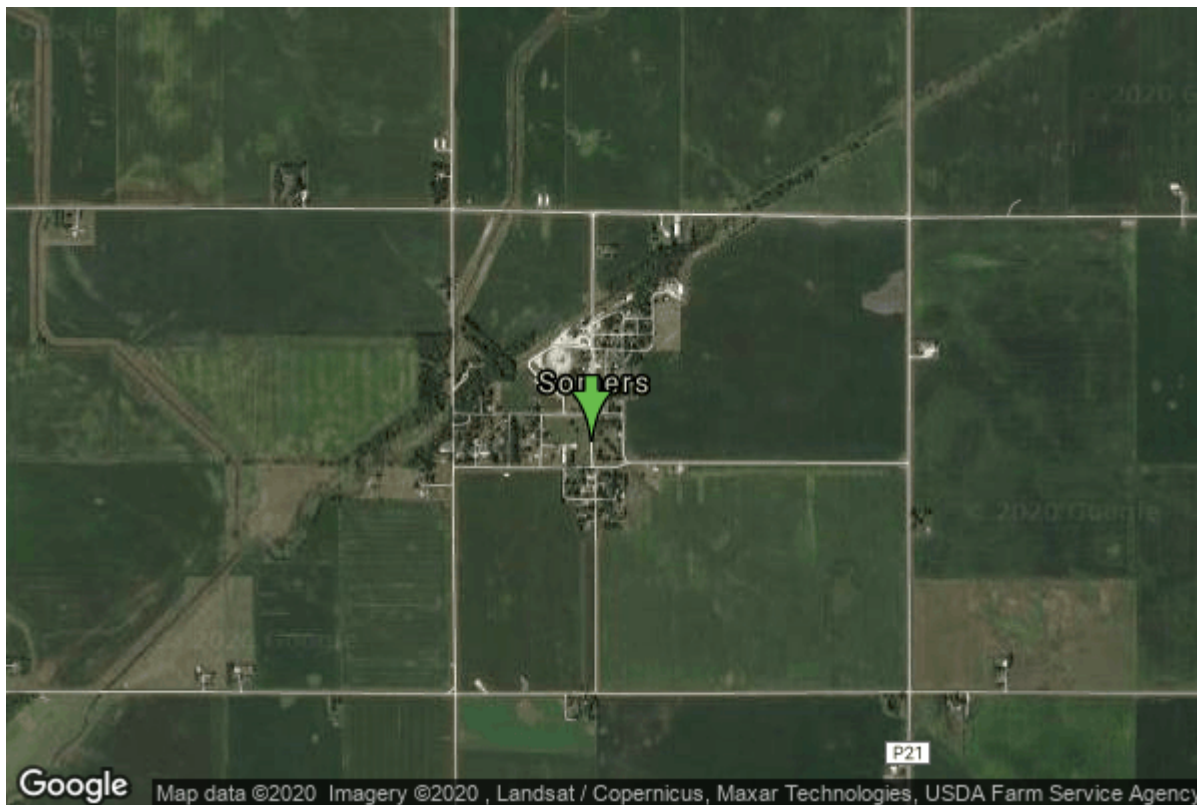


Well W#54648 Information



Date Received	09/19/2001	State	Iowa
Owner Name	Somers, City Of	County	Calhoun
Alt Name	#2	Quadrangle	Knierem, Iowa
WNumber	54648	Township	T87N
PWTS ID	0	Range	R31W
PWS ID	1381073	Section	2
Storet ID	0	Quarter	NW SE SW
SDWIS ID	2582984	Latitude	42.3765300000
USGS ID	0	Longitude	-94.4296800000
Project	Source Water Protection	Accuracy	
Operator	Unknown	UTM X	382297
		UTM Y	4692573

Site Type	Drilled hole	Drilling Company	Beemer Well Co.
Well Status	Active	Drilling Date	09/07/2001
Field Located	No	Drilling Method	Rotary
Elevation	1153 ft	Bedrock Depth	138 ft
Elevation Accuracy	Digital Elevation Model Accurate to 5 ft	Well Depth	385 ft
Landscape Position	Upland	Total Depth	385 ft
		Well Types	Municipal, Public Supply
		Aquifers	Mississippian

Hole Construction Information

Date	09/07/2001	Depth	320.00 ft
Diameter	12.00 in		

Comments

Date	09/07/2001	Depth	385.00 ft
Diameter	6.00 in		
Comments			

Casing Construction Information

Date	09/07/2001	Casing Type	PVC
Start Depth	-3.00 ft	End Depth	320.00 ft
Diameter	6.13 in	Amount	323.00 ft
Comments			

Date	09/07/2001	Casing Type	PVC
Start Depth	205.00 ft	End Depth	285.00 ft
Diameter	4.50 in	Amount	80.00 ft
Comments			

Date	09/07/2001	Casing Type	Perforated PVC
Start Depth	165.00 ft	End Depth	185.00 ft
Diameter	6.13 in	Amount	20.00 ft
Comments			

Date	09/07/2001	Casing Type	Perforated PVC
Start Depth	0.00 ft	End Depth	0.00 ft
Diameter	0.00 in	Amount	0.00 ft
Comments			

Grout Construction Information

Date	09/07/2001	Grout Placement	Unknown
Grout Type	Bentonite (Clay)	End Depth	320.00 ft
Start Depth	0.00 ft		
Comments			

Pump Construction Information

Date	09/07/2001	Pump Type	Submersible
Diameter	5.60 in	Rating	50
Depth Intake	160.00 ft		
Comments			

Log Information

Date 03/09/2010
Log Types Strip log
Prepared By Unknown
Comments

Date
Log Types Drillers log
Prepared By Unknown
Comments

Stratigraphy Information

System Quaternary
Series Pleistocene Series
Group
Formation
Member
Submember
Start Depth 0.00 ft End Depth 138.00 ft
Contact Accuracy
Penetration
Primary Lithology Sand And Gravel Percent 77
Secondary Lithology Till - Unoxidized And Percent 20
Unleached
Tertiary Lithology Till - Oxidized And Percent 3
Unleached
Comments

System Pennsylvanian (Subsystem Of Carboniferous System)
Series
Group
Formation
Member
Submember
Start Depth 138.00 ft End Depth 290.00 ft
Contact Accuracy
Penetration
Primary Lithology Shale Percent 85
Secondary Lithology Siltstone Percent 8
Tertiary Lithology Coal Percent 7
Comments

System Mississippian (Subsystem Of Carboniferous System)
Series
Group

Formation	St. Louis		
Member			
Submember			
Start Depth	290.00 ft	End Depth	325.00 ft
Contact Accuracy			
Penetration			
Primary Lithology	Dolomite	Percent	80
Secondary Lithology	Siltstone	Percent	15
Tertiary Lithology	Shale	Percent	5
Comments			

System	Mississippian (Subsystem Of Carboniferous System)		
Series			
Group	Augusta		
Formation	Keokuk		
Member			
Submember			
Start Depth	325.00 ft	End Depth	385.00 ft
Contact Accuracy			
Penetration			
Primary Lithology	Dolomite	Percent	50
Secondary Lithology	Chert/Chalcedony	Percent	25
Tertiary Lithology	Limestone	Percent	25
Comments			

Water Production Information

Date	09/18/2001	Start Time	
Aquifer	Unknown		
Static Water Level	106.00 ft	Yield	75 gallons per minute
Pumping Water Level	109 ft	Yield Method	Orifice
Measurement	Tape	Pump Test	Yes
Pump Method	Unknown	Duration	0 mins
Comments			

Chip Storage Information

Date	01/14/2002		
Storage	OD4-565	Bin	
Number of Boxes	1	Number of Samples	71
Sample Intervals	5	Sample Gaps	90-95; 135-40; 200-205; 330-35; 370-75; 380-85
Sample Top	0 ft	Sample Bottom	380 ft
Washed Top	280 ft	Washed Bottom	380 ft
Duplicate Storage			
Comments			

<https://www.ihr.uiowa.edu/igs/geosam/well/54648/general-information>